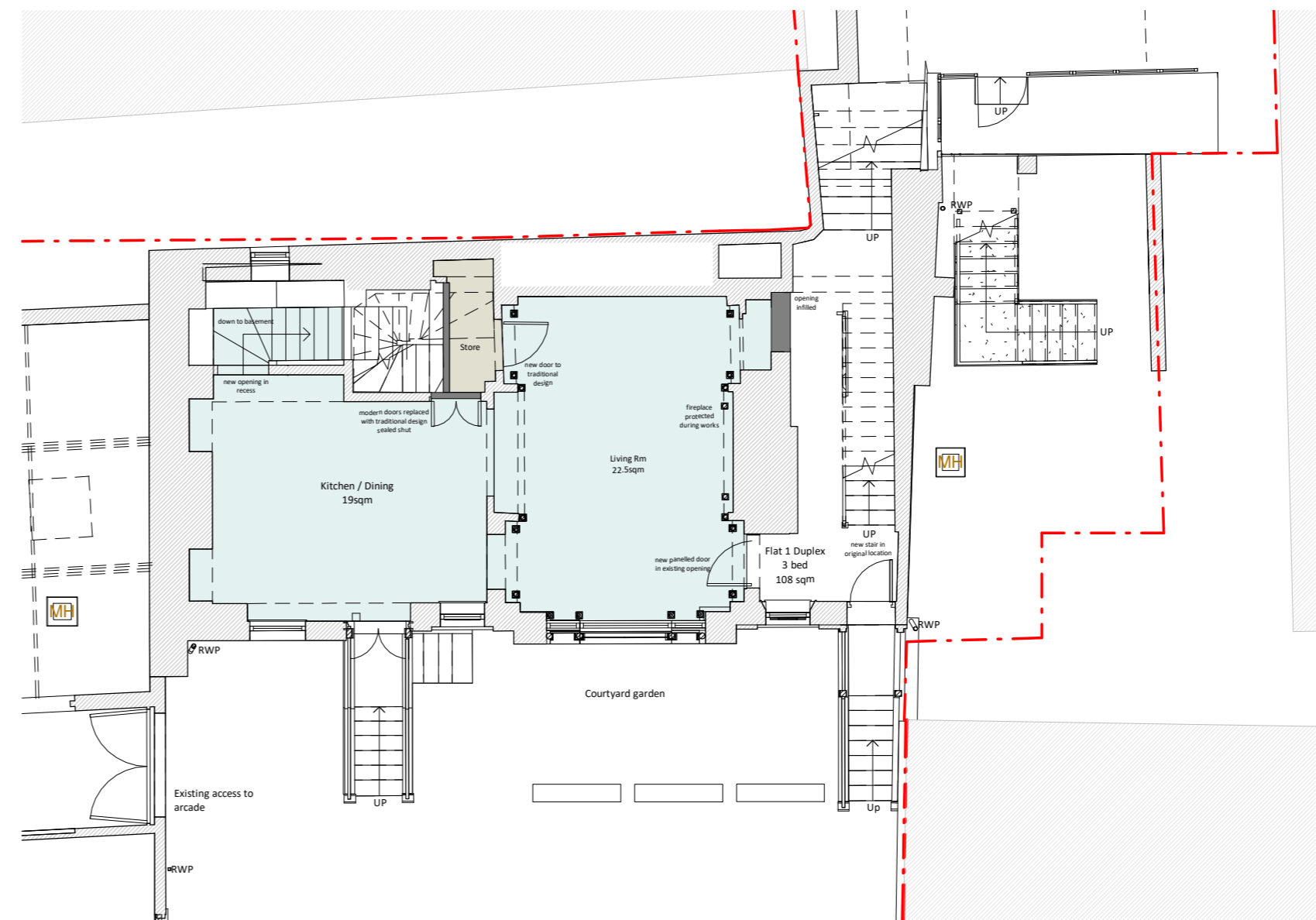
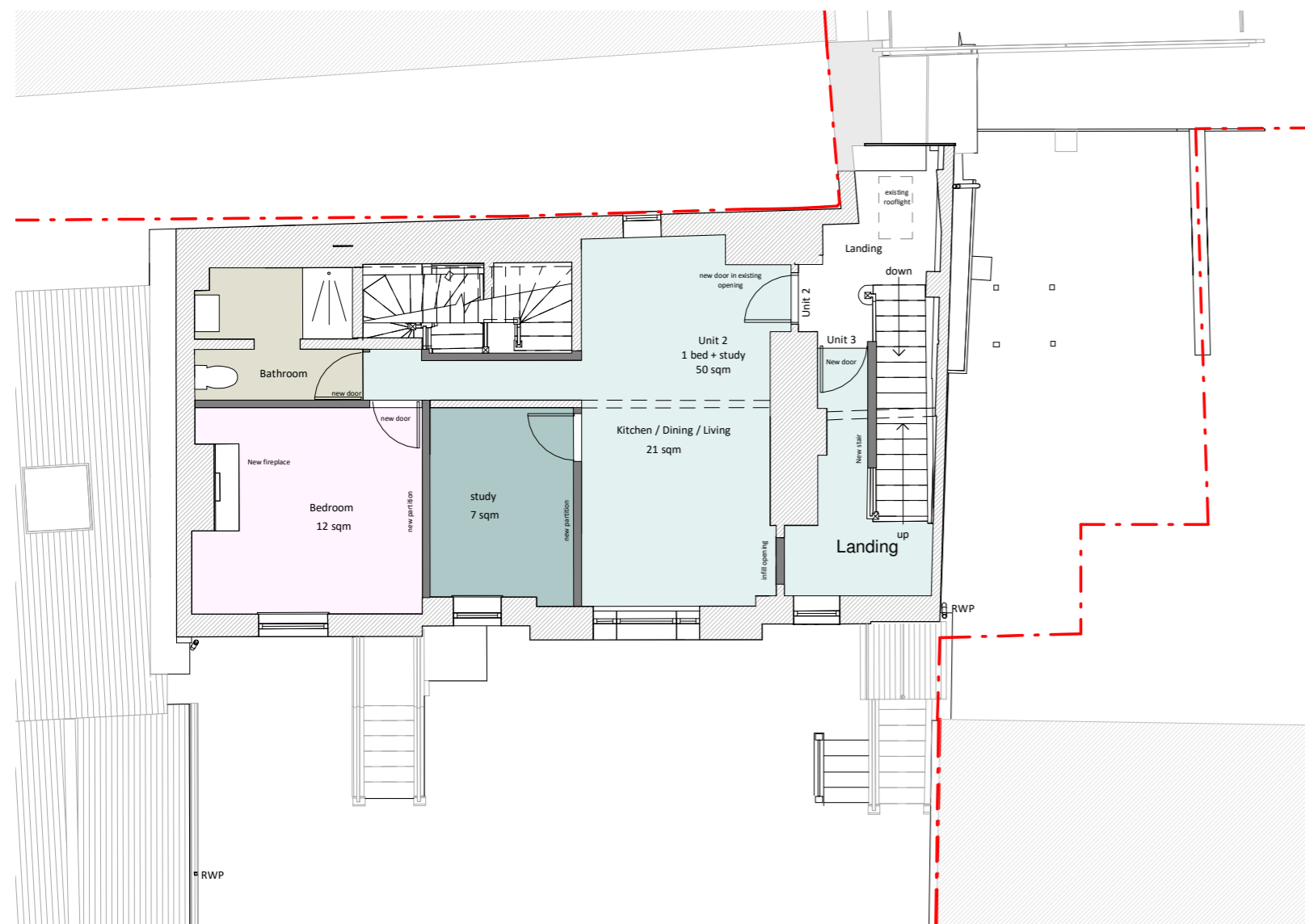


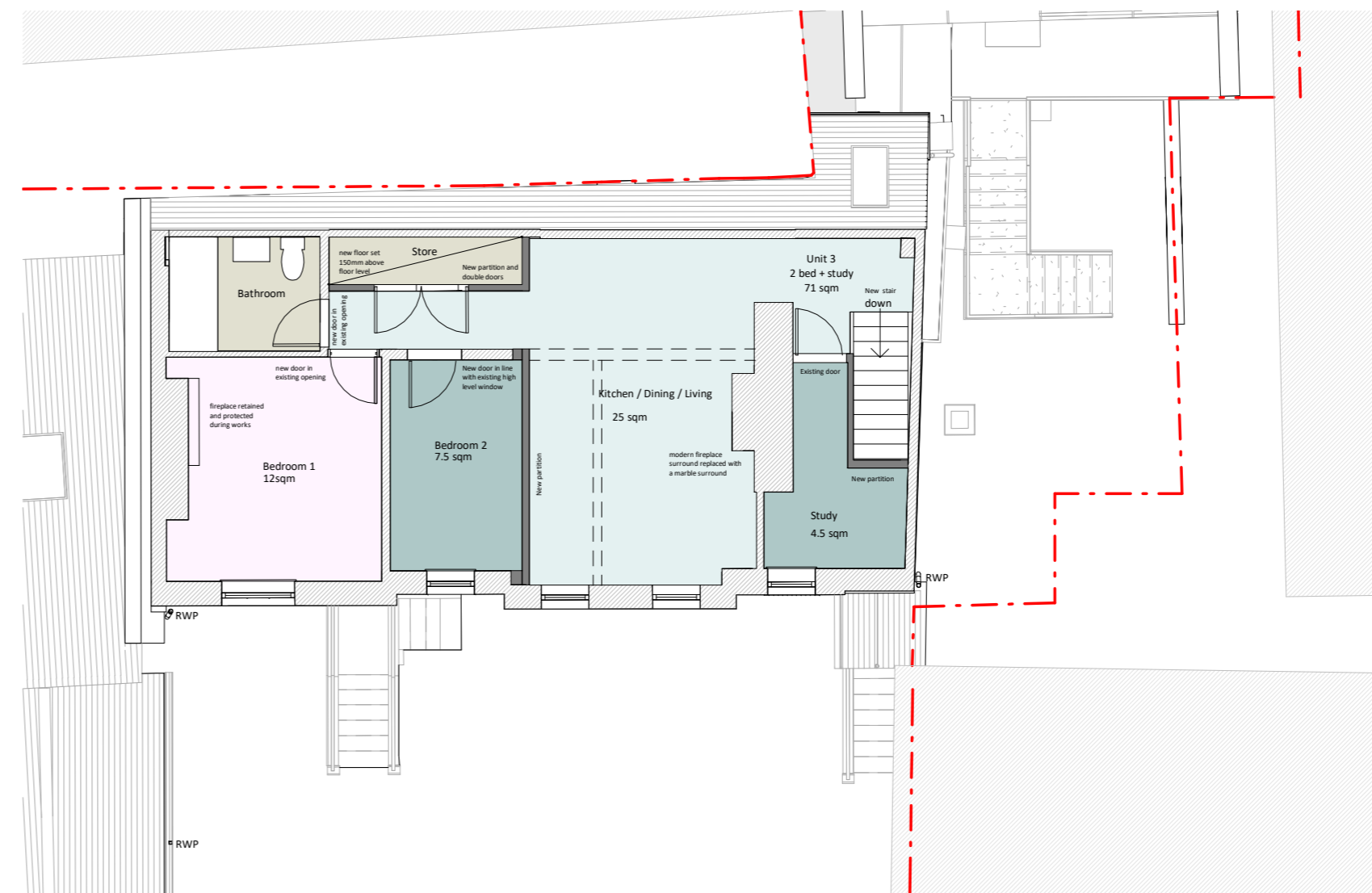
1 Proposed Basement Plan
1 : 100



2 Proposed Ground Floor Plan
1 : 100



3 Proposed First Floor Plan
1 : 100



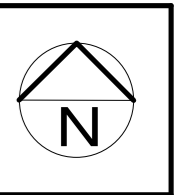
4 Proposed Second Floor Plan
1 : 100



Scale 1: 100

Status

PLANNING



DRAWING FOR PLANNING ONLY

The proposed drawings are based on a measured survey and existing drawings produced by others. FAL does not accept any responsibility for their accuracy

APPROVED UTT/22/0185/LB

E	Amendments to planning comments	13.05.22	AF
D	Planning Submission	19.01.22	AF
C	Amendments to clients comments	19.01.22	AF
B	Basement & Gnd floor layouts amended	17.01.22	AF
A	Amendments to clients comments	11.01.22	AF
No.	Revision	Date	Inits

Job
Lime Tree House, Saffron Walden

Drawing
Lime Tree House APPROVED Plans

Client
Rowell Associates

FAL | ARCHITECTS

T : +44 (0)7786445320 | www.fal-architects.co.uk
FAL Studio | 48 Langham Rd | Cambridge | CB1 3SE

Scale	Date	Drawn/Checked
1 : 100@A2	11/12/21	MC/AF
Job Number	Dwg No	Rev
0821 0821-PL 11	PL 11	E