

Scale 1: 50

Status

**PLANNING**

**Notes:**

This drawing is to be read in conjunction with all other relevant drawings and all corresponding Structural Drawings and relevant Specifications.

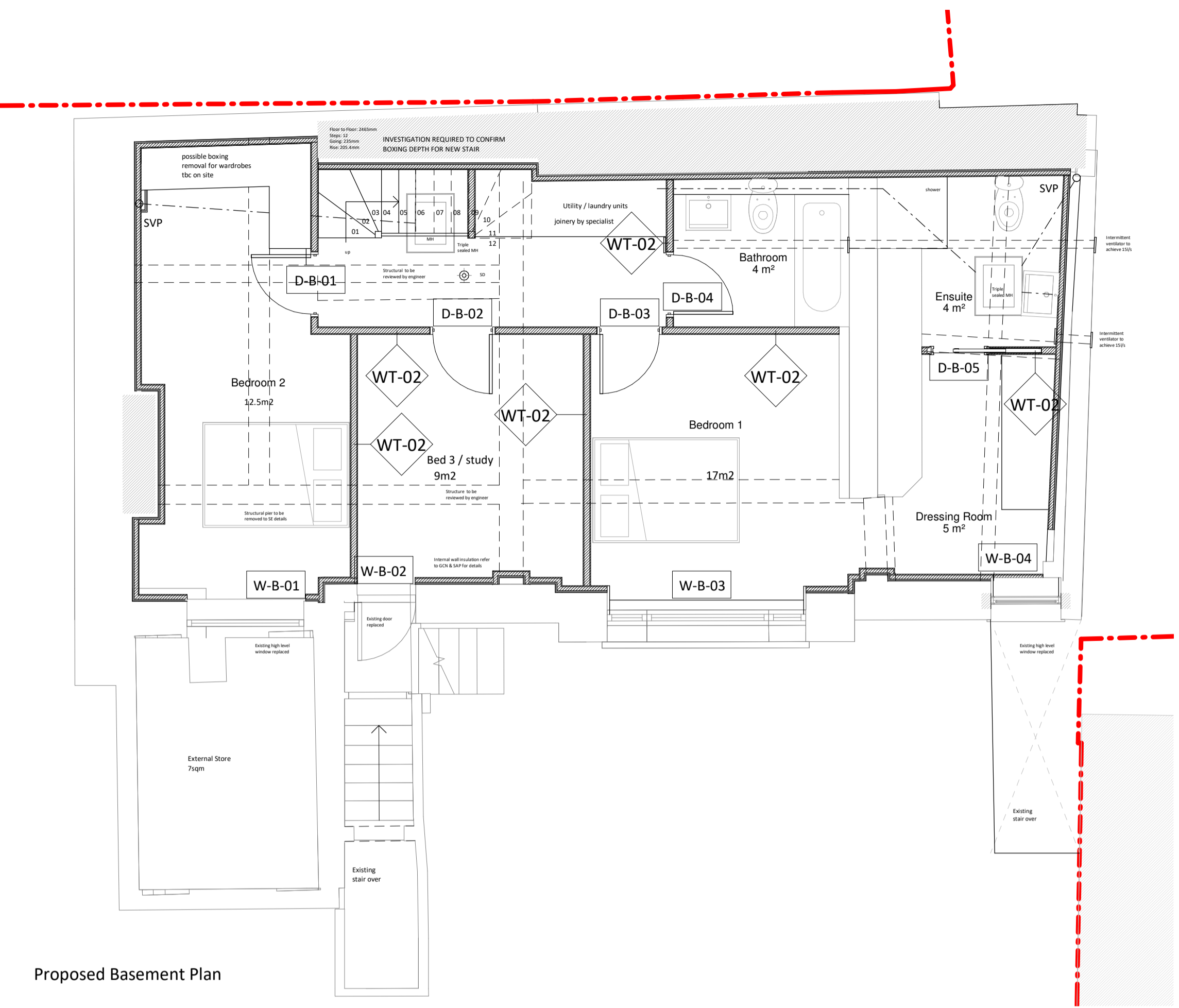
**DRAWING FOR PLANNING PURPOSE ONLY. IT IS NOT INTENDED FOR SITE USE. DO NOT SCALE. USE WRITTEN DIMENSIONS ONLY**

The drawing is based on a measured survey provided by a third party. FAL do not accept any liability for its accuracy.

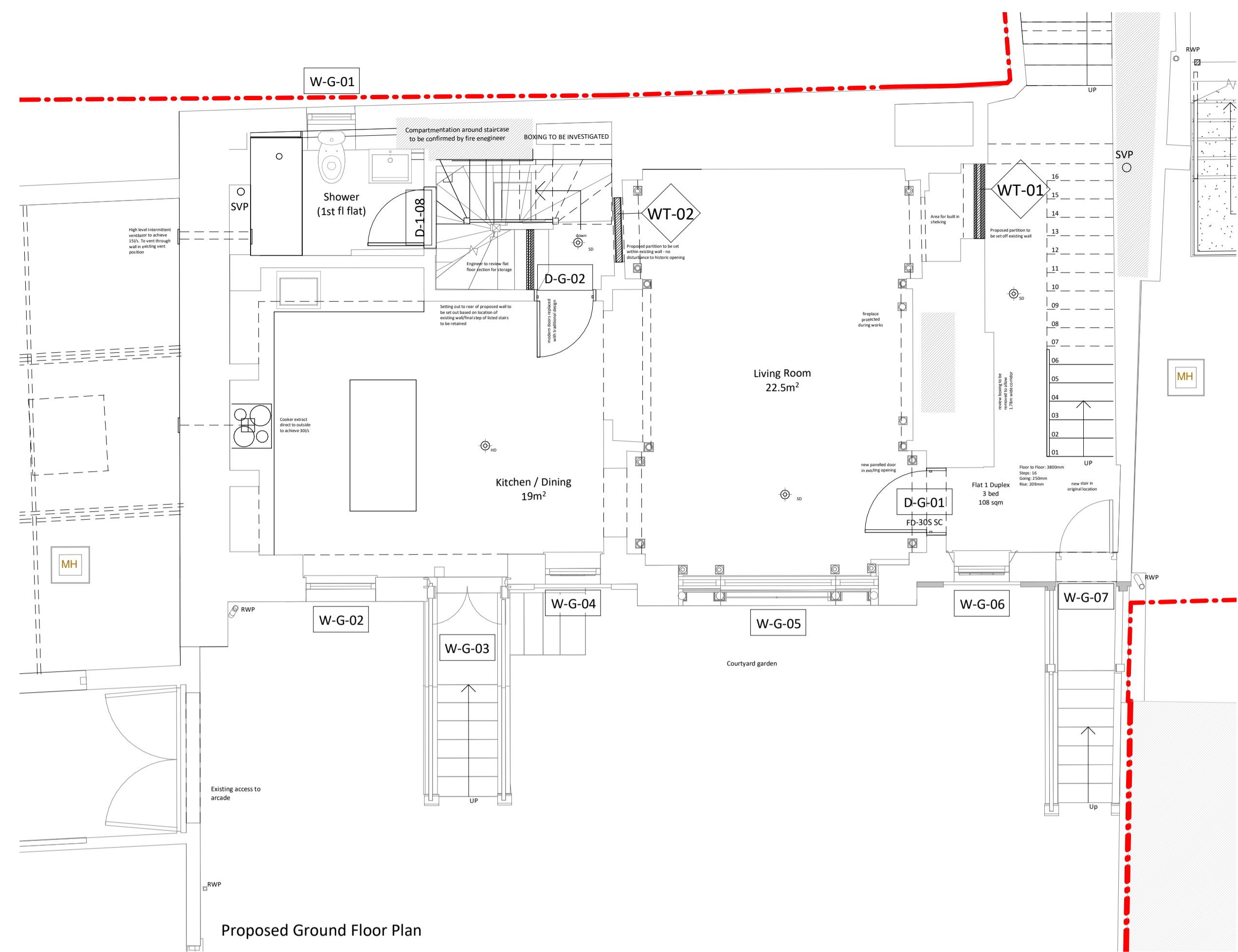
Dimensions shown from existing to proposed are from finished face of existing to steel stud to proposed. Dimension shown from proposed to proposed are from steel stud to steel stud.

**ALL FLAT COMPARTMENTATION TO BE CONFIRMED BY THE FIRE ENGINEER.**

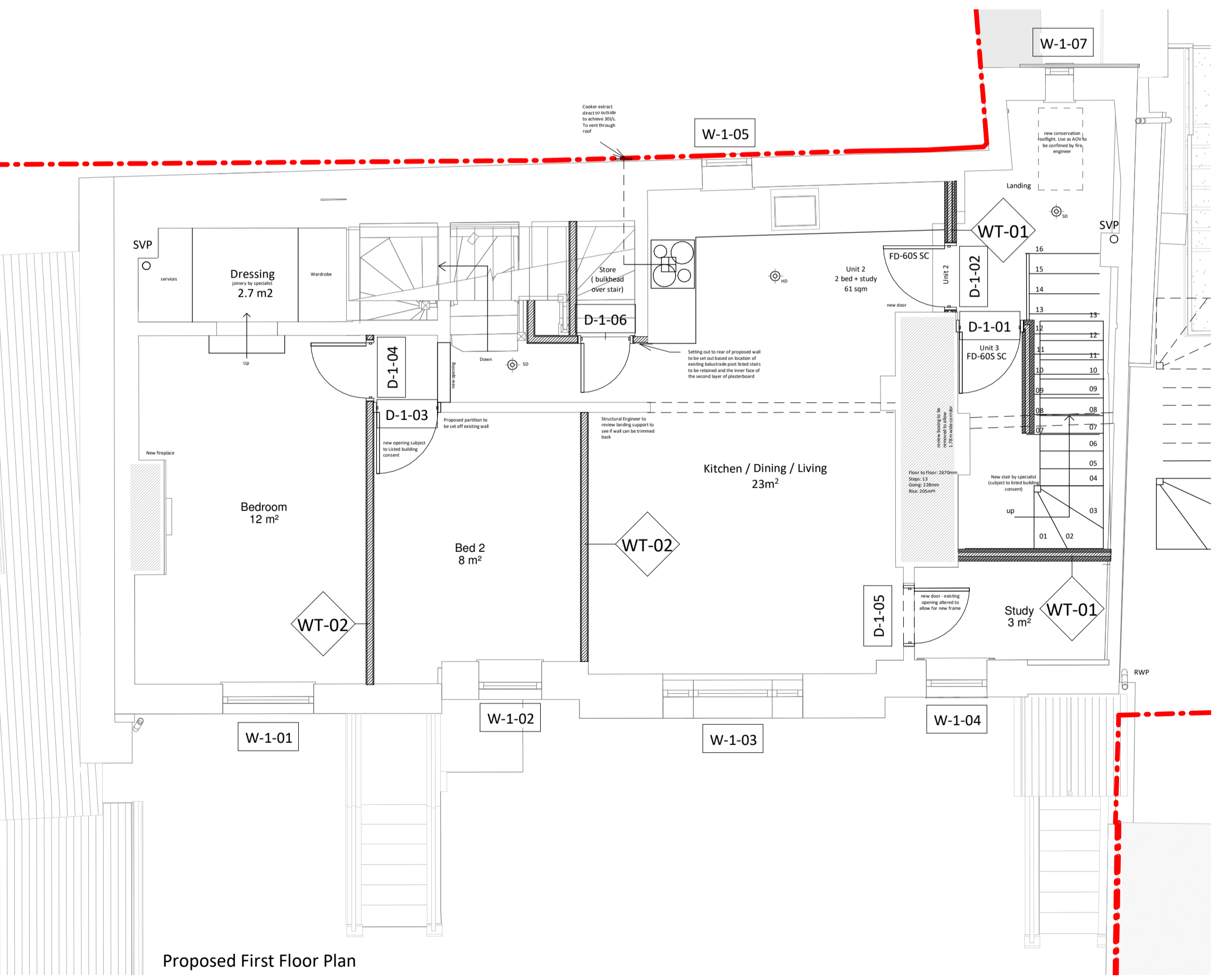
**FURTHER SITE INVESTIGATION IS REQUIRED INTO EXTENT OF BOXING ON THE NORTH WALL TO VALIDATE FLAT AREAS. LAYOUT PRELIMINARY**



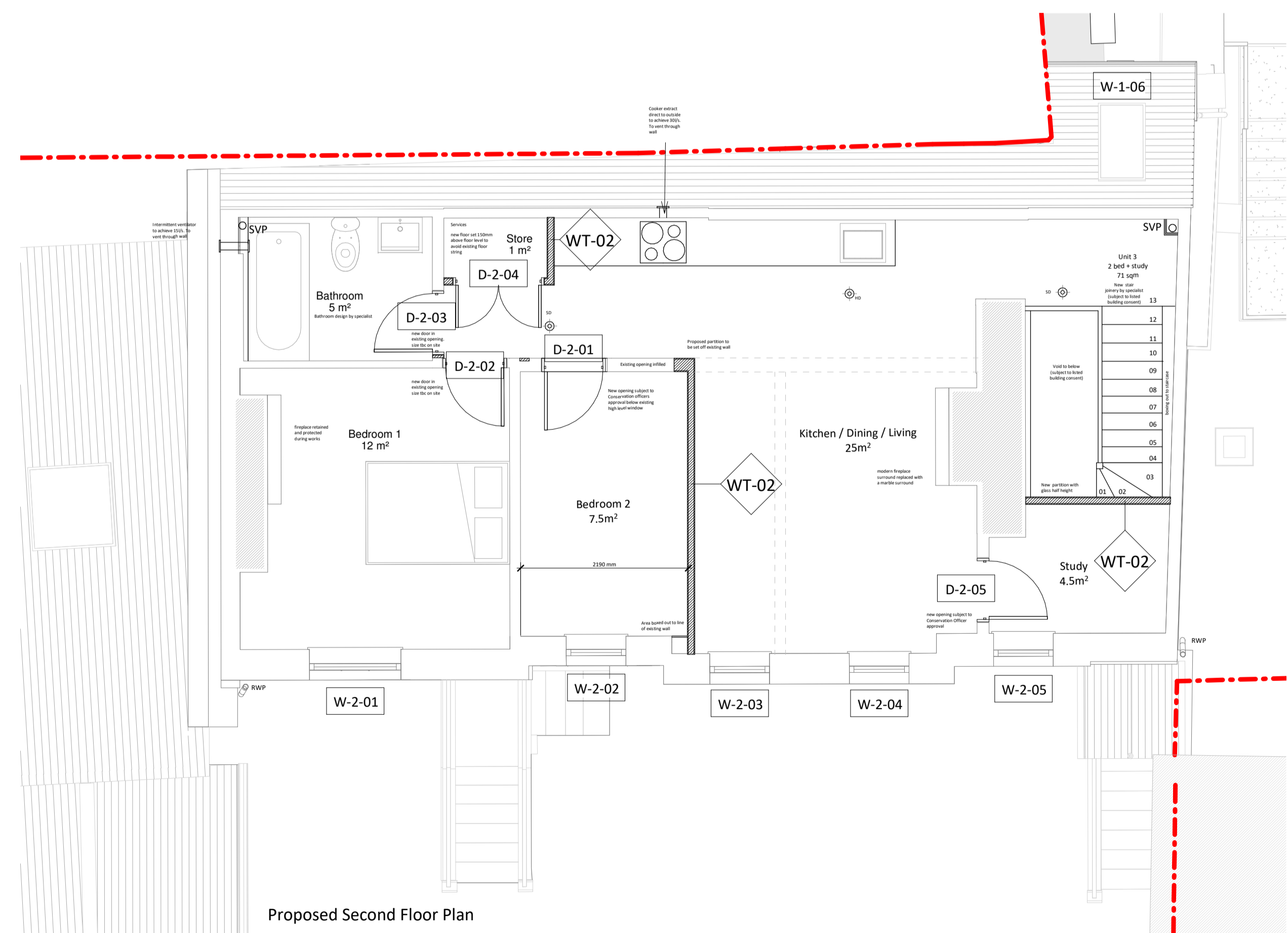
Proposed Basement Plan



Proposed Ground Floor Plan



Proposed First Floor Plan



Proposed Second Floor Plan

Flat	WT-01 COMPARTMENT WALL - (174mm)
	Fire Rating: 60 mins (from both sides)
	Thermal (U-Value): 0.0 W/m²K
	Acoustic Rating (Airborne): 43dB DnTwaCtr (min)
	Acoustic Rating (Impact): n/a
	1. 2x15mm Sinat GTEC dB boards, all joints staggered, taped & filled. (total min mass 26kg/m²)
	2. Speedline Rebar at centres and fixed to 'C' studs in accordance with manufactures specification
	3. 70mm Speedline 'C' studs at centres to suit partition height with 50mm Isover Acoustic Partition Roll (APR 1200) in the cavity
	4. 2x15mm Sinat GTEC dB boards, all joints staggered, taped & filled. (total min mass 26kg/m²)
	Based on Speedline Systems wall type RB70-5-60(50). Pattresses where required.
	Equivalent moisture resistant plasterboard should be used in all outer layers to all bathrooms or kitchens.

Room	WT-02 INTERNAL WALL - (97mm)
	Fire Rating: 30 mins (from both sides)
	Thermal (U-Value): n/a
	Acoustic Rating (Airborne): 40 Rw dB (min)
	Acoustic Rating (Impact): n/a
	1. 12.5mm Sinat GTEC Standard Board, all joints taped & filled. (min mass 7.7kg/m²)
	2. 20mm Speedline 'C' stud at centres to manufactures specification. 25mm Isover Acoustic Partition Roll (APR 1200) in cavity to specific rooms in accordance with Approved Document E2
	3. 12.5mm Sinat GTEC Standard Board, all joints taped & filled. (min mass 7.7kg/m²)
	Based on Speedline Systems wall type 70-5-51(25). Pattresses where required.
	Equivalent moisture resistant plasterboard should be used in all outer layers to all bathrooms or kitchens.

Flat	WT-03 INTERNAL WALL - (98mm)
	Fire Rating: 60 mins (from both sides)
	Thermal (U-Value): 0.0 W/m²K
	Acoustic Rating (Airborne): 43dB DnTwaCtr (min)
	Acoustic Rating (Impact): n/a
	1. 2x19mm Sinat GTEC Fire Board, all joints staggered, taped & filled.
	2. 60mm Speedline 'Y' studs at centres to manufactures specification
	3. 25mm Isover APR 1200 quilt for sound insulation
	4. 25mm Sinat GTEC Corboard between studs, held in place as per manufactures details.
	Based on Speedline Systems wall type SE60-5-62 (25). Pattresses where required.

# PRELIMINARY

F	Listed building amendments	19.04.24	AF
E	Issued to BC	15.03.23	AF
D	Client amendments	07.02.23	AF
C	Updated to client comments	10.01.23	AF
B	Amended to clients comments	28.11.22	AF
A	Basement amended to 3 beds	10.11.22	AF
No.	Revision	Date	Ints

Job  
Lime Tree House, Saffron Walden

Drawing  
Proposed Setting Out Plans

Client  
Rowell Associates

**FAL | ARCHITECTS**

T: +44 (0)7786445320 | www.fal-architects.co.uk  
FAL Studio | 48 Langham Rd | Cambridge | CB1 5SE

Scale	Date	Drawn/Checked
1:50@A1	13/09/22	MC/AF
Job Number	Dwg No	Rev
0821	1011	F
0821-1011		