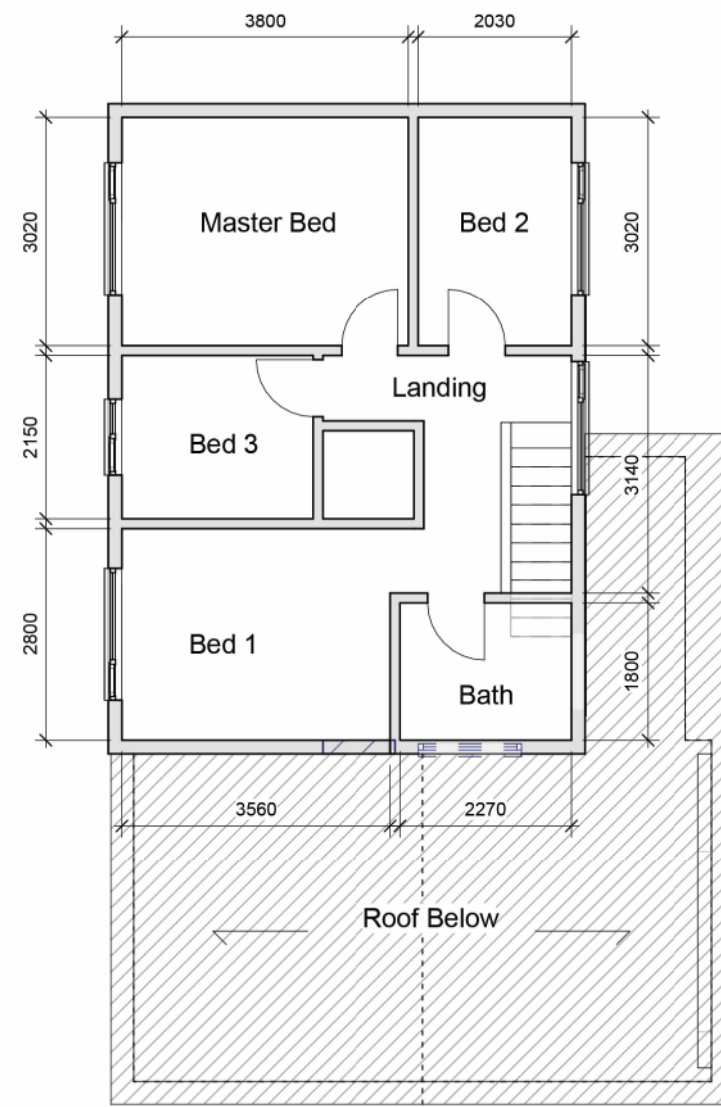


1 Existing_Ground
1:100



2 Existing_First
1:100

goldbyarchitects

COPYRIGHT
Reproduction of the whole or part of the document constitutes an infringement of copyright. The information, ideas and concepts contained in this document is / are confidential. The recipients(s) of this document is / are prohibited from disclosing such information, ideas and concepts to any person without prior written consent of the copyright holder.

REV	DATE	REVISION	BY	CHK
1	26/03/24	Town Planning		

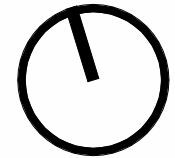
NOTES
Do not scale. Contractor must verify all dimensions on site before commencing any work or preparing shop drawings which must be approved by the architect before manufacture. Any extra entailed work shown on this drawing must be claimed and approved before proceeding.

PROJECT
Chestnut House

Chestnut House,
Aston, Bampton,
Oxfordshire, UK

DRAWING STATUS
Town Planning

JOB N° 2304
REVISION N° 1
DATE 26/03/24
SCALE @ A3
DRAWN BY SG
CHECKED BY SG



DRAWING TITLE
Existing Plans

TP.100