

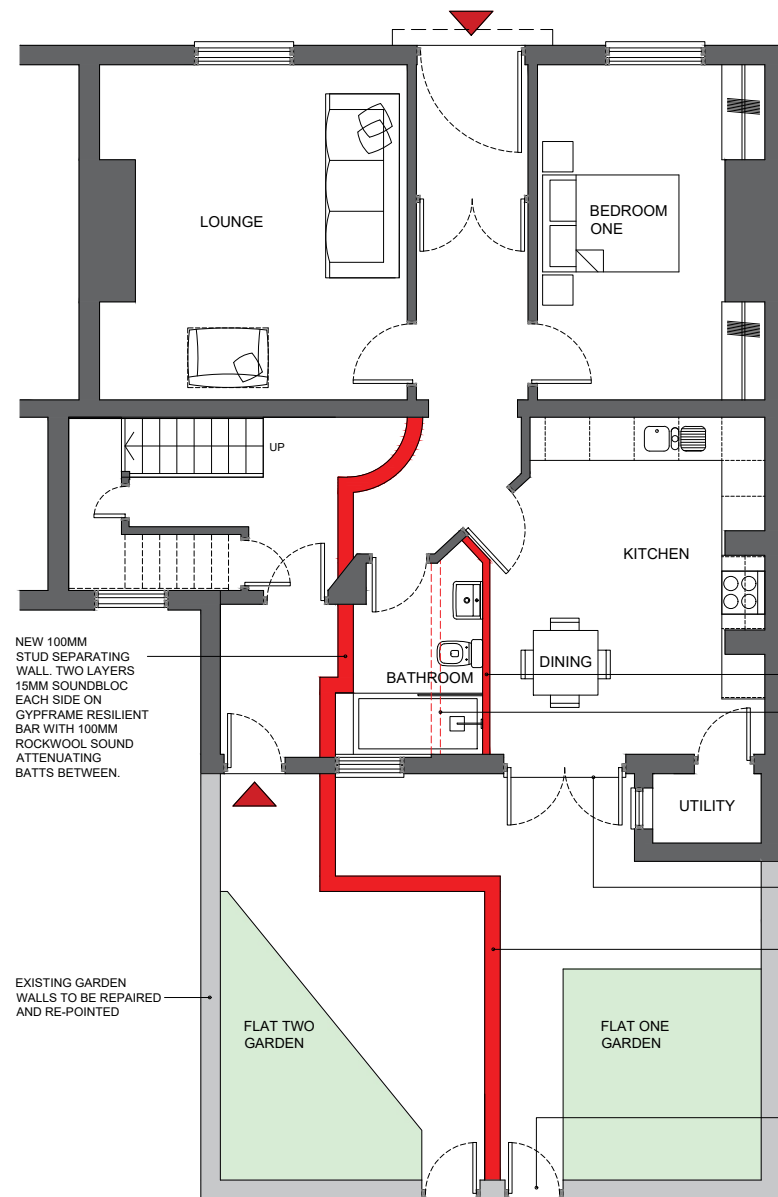


REAR ELEVATION AS PROPOSED

ACCOMMODATION SCHEDULE

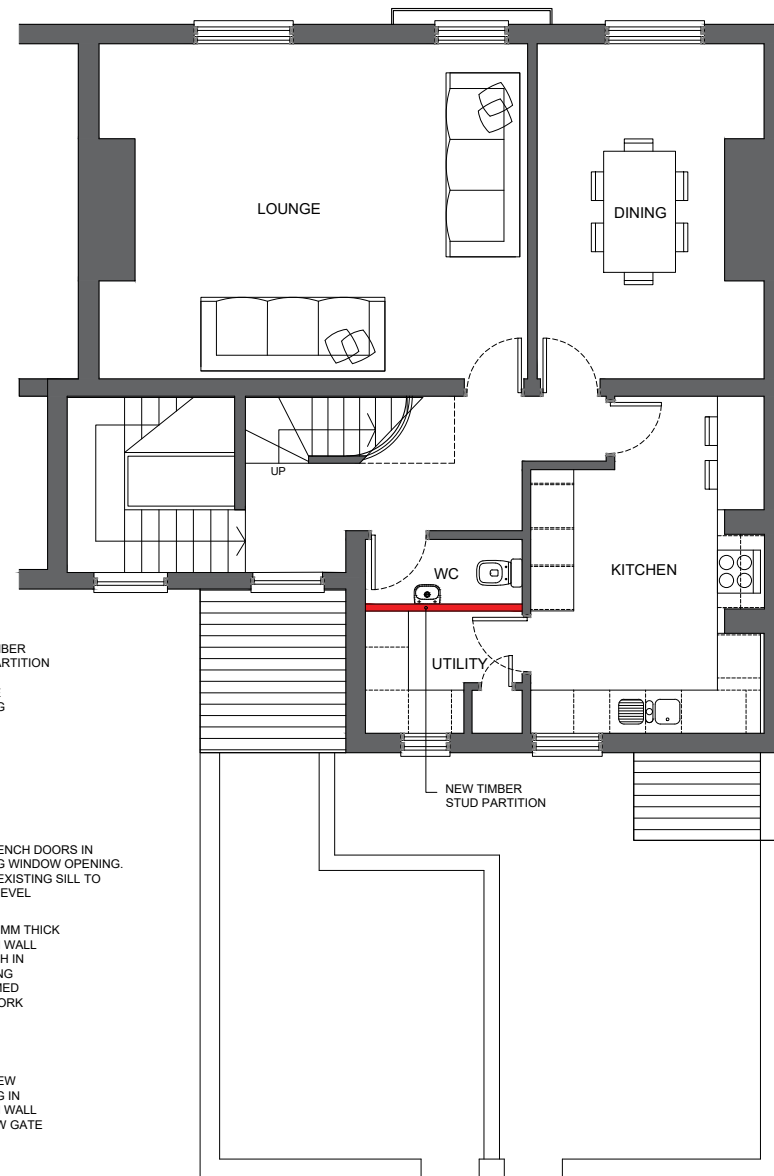
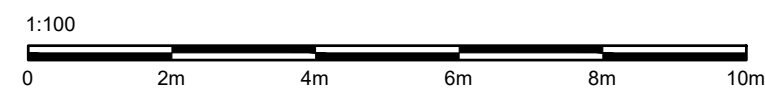
Flat One		One bedroom ground floor flat	
Internal Footprint	71.6 m ²		
Lounge	18.6 m ²		
Kitchen / Dining	17.5 m ²		
Bedroom	13.7 m ²		
Bathroom	4.8 m ²		
Utility	2.1 m ²		
Store	0.6 m ²		

Flat Two		Two bedroom first floor flat	
Internal Footprint	123.3 m ²		
Ground floor lobby	11.0 m ²		
First floor	69.2 m ²		
Second floor	43.1 m ²		
Lounge	26.5 m ²		
Kitchen / Dining	14.0 m ²		
Dining	13.5 m ²		
WC	2.0 m ²		
Utility	3.7 m ²		
Bedroom One	18.0 m ²		
Bedroom Two	14.0 m ²		
Bathroom	6.5 m ²		

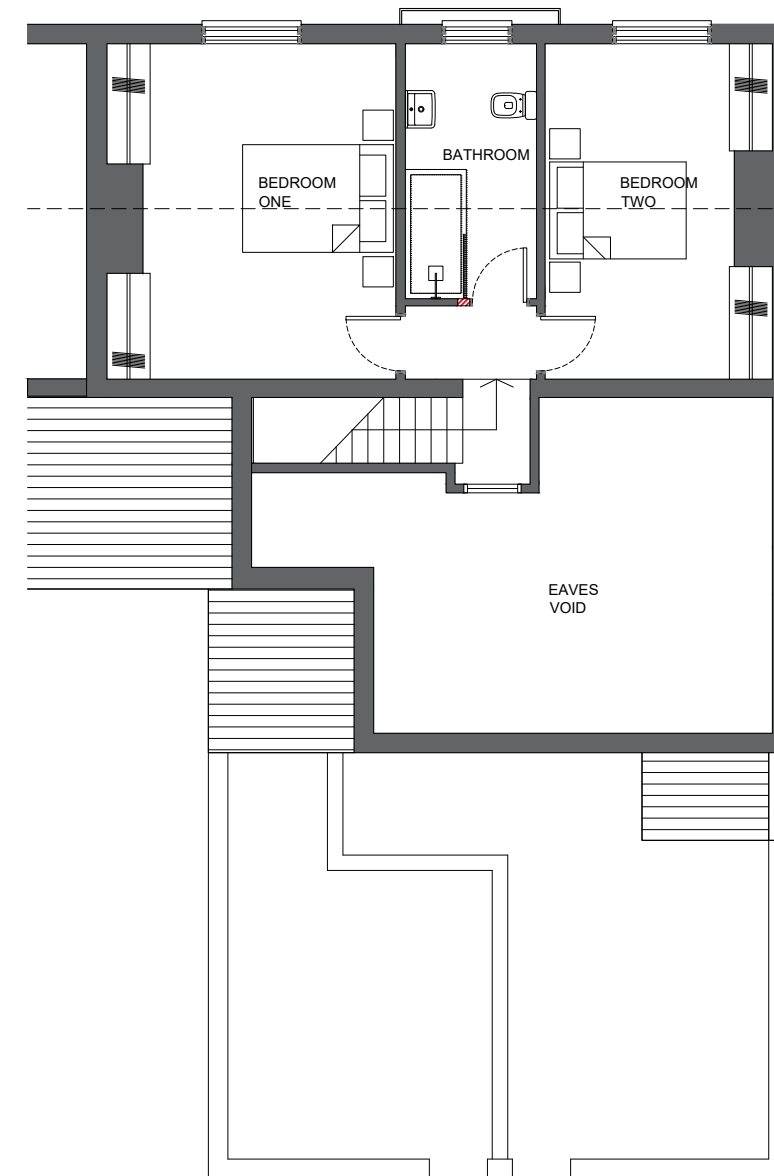


GROUND FLOOR PLAN AS PROPOSED

PROPOSED PLANS
SCALE 1:100 A2



FIRST FLOOR PLAN AS PROPOSED



SECOND FLOOR PLAN AS PROPOSED

BRAMLEY - PATE + PARTNERS
Chartered Architects - Telephone (01772) 335357

21 Fairfield Square, Droylsden, Manchester For the Moravian Union C/O John Forrester Ltd	21 02 2024
PROPOSED 2NO SELF CONTAINED FLATS PROPOSED PLANS AND ELEVATIONS	2009 PL 00 01