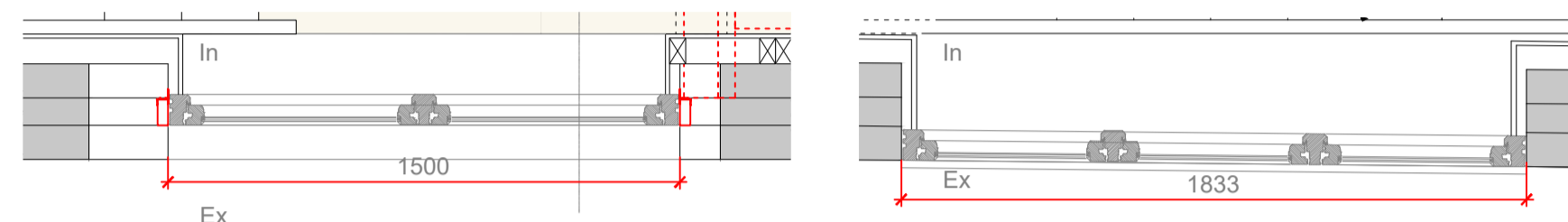
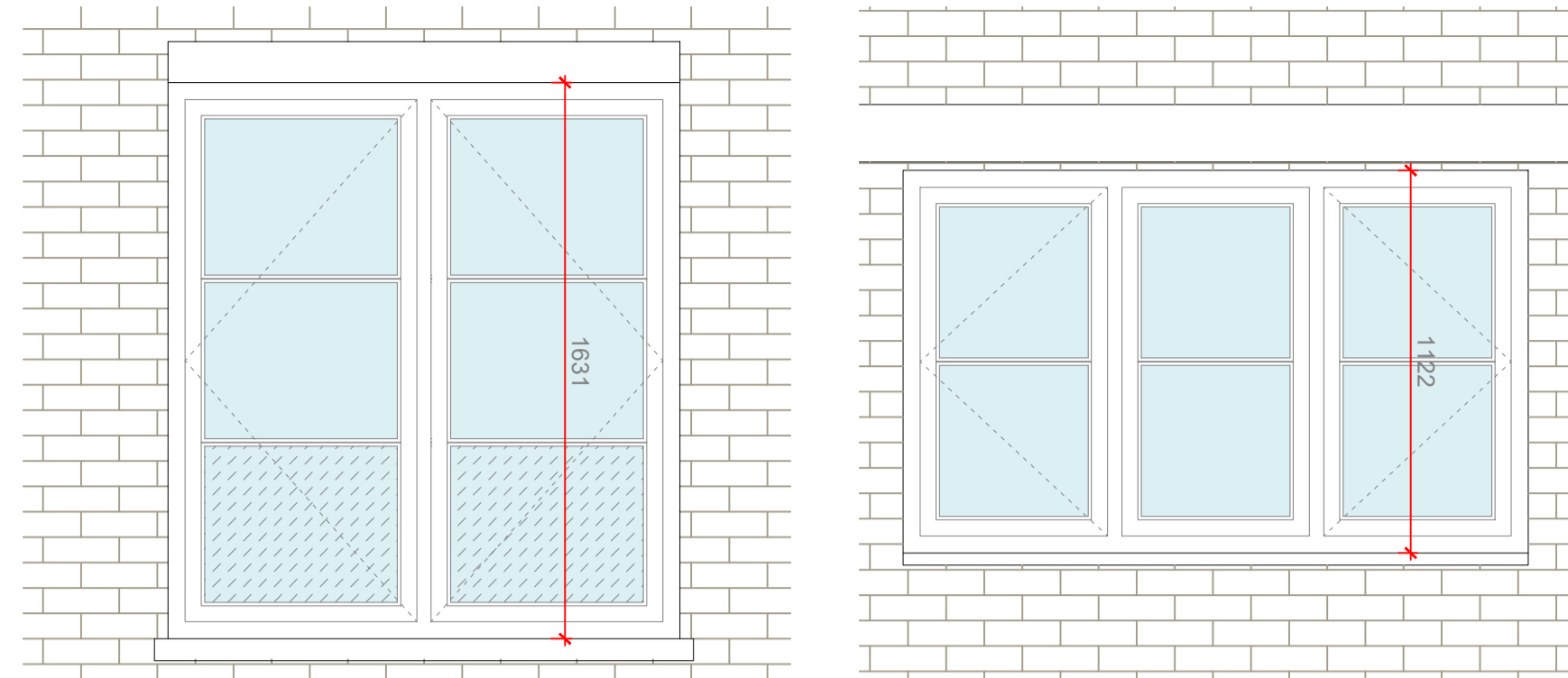


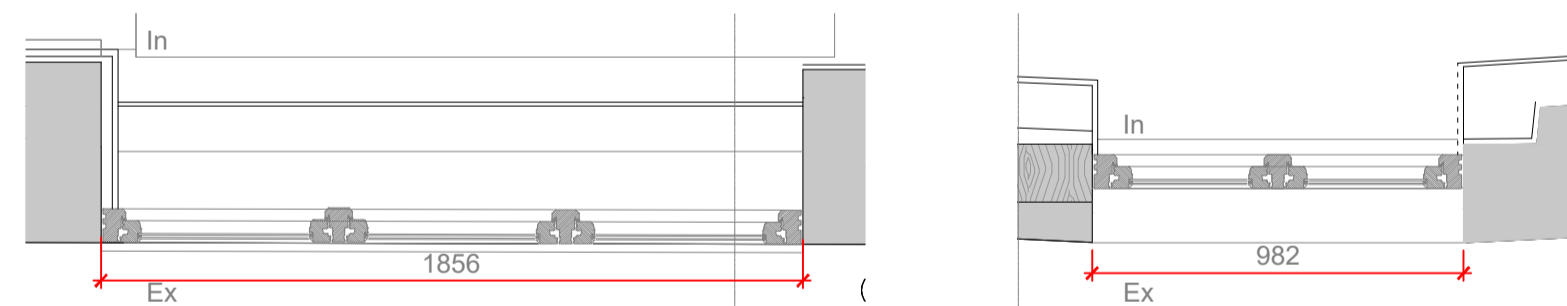
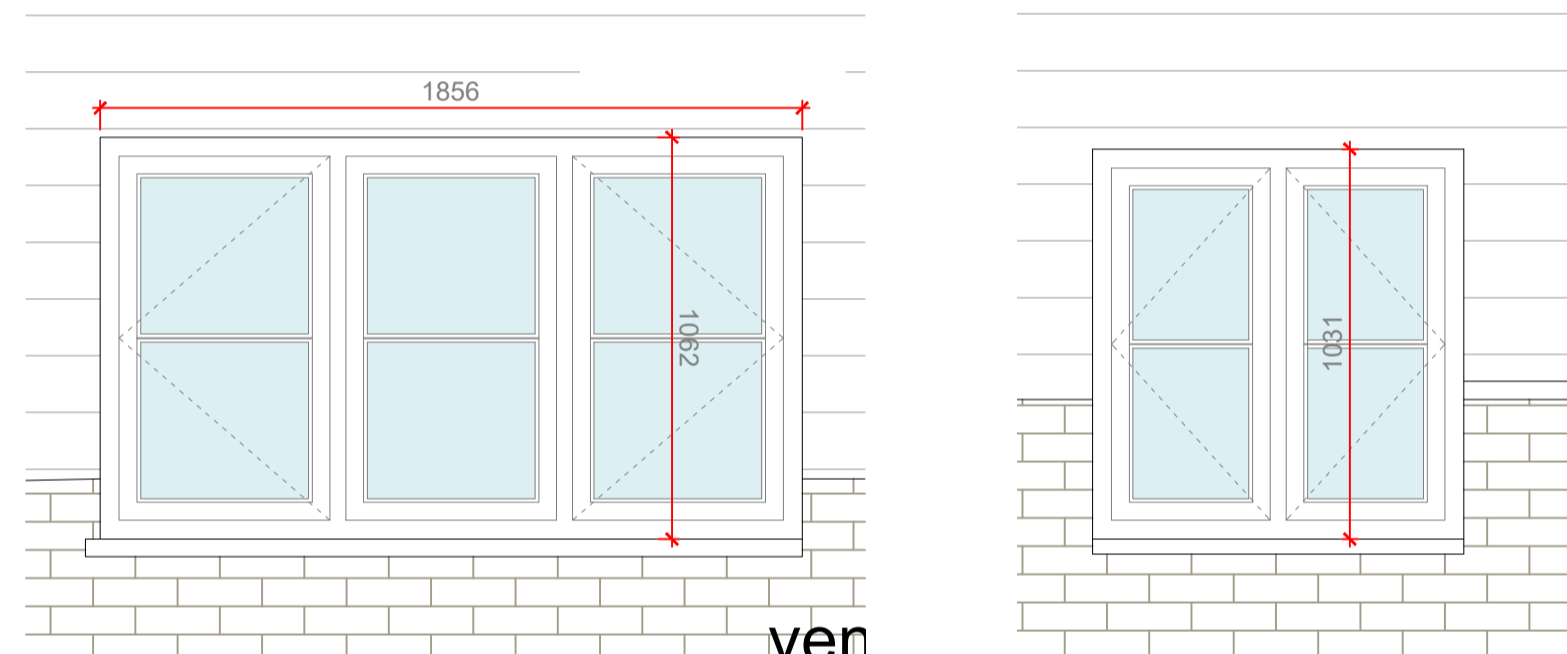
G1 - (Future Dining Room)



- WG1-1**
- Colour Internal Frame - White
  - Colour External Frame - French Gray
  - Type - Timber Casement Window
  - Opening - refer to drawing
  - Trickle Vent - to building regulations
  - Glass - double glazed clear with bottom panels being safety glass
  - Notes - U-Value no higher than 1.4W/m²K for windows

- WG1-2**
- Colour Internal Frame - White
  - Colour External Frame - French Gray
  - Type - Timber Casement Window
  - Opening - refer to drawing
  - Trickle Vent - to building regulations
  - Glass - double glazed clear
  - Notes - U-Value no higher than 1.4W/m²K for windows

G2 - (Future Kitchen)



- WG2-1**
- Colour Internal Frame - White
  - Colour External Frame - French Gray
  - Type - Timber Casement Window
  - Opening - refer to drawing
  - Trickle Vent - to building regulations
  - Glass - double glazed clear
  - Notes - U-Value no higher than 1.4W/m²K for windows

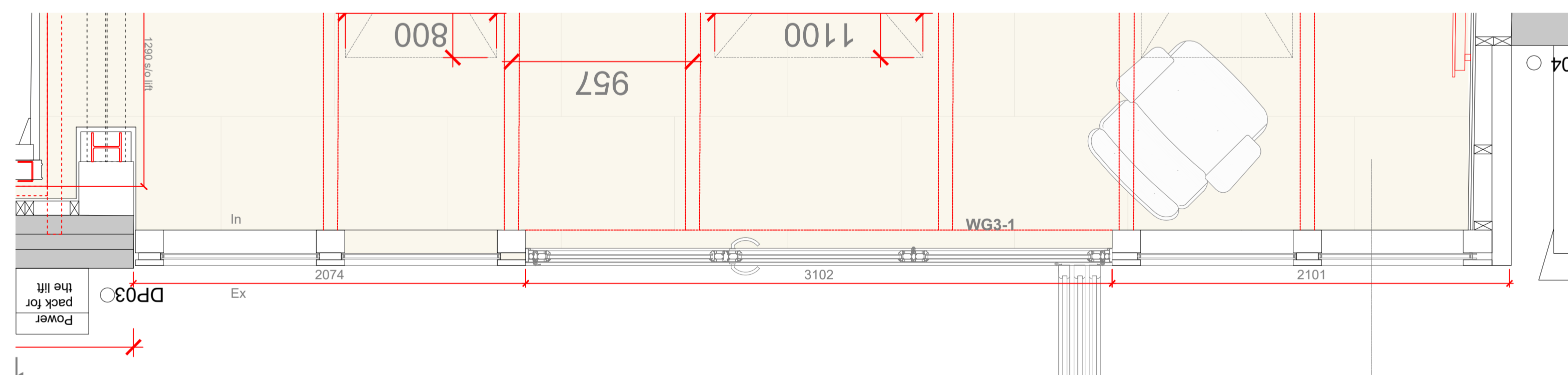
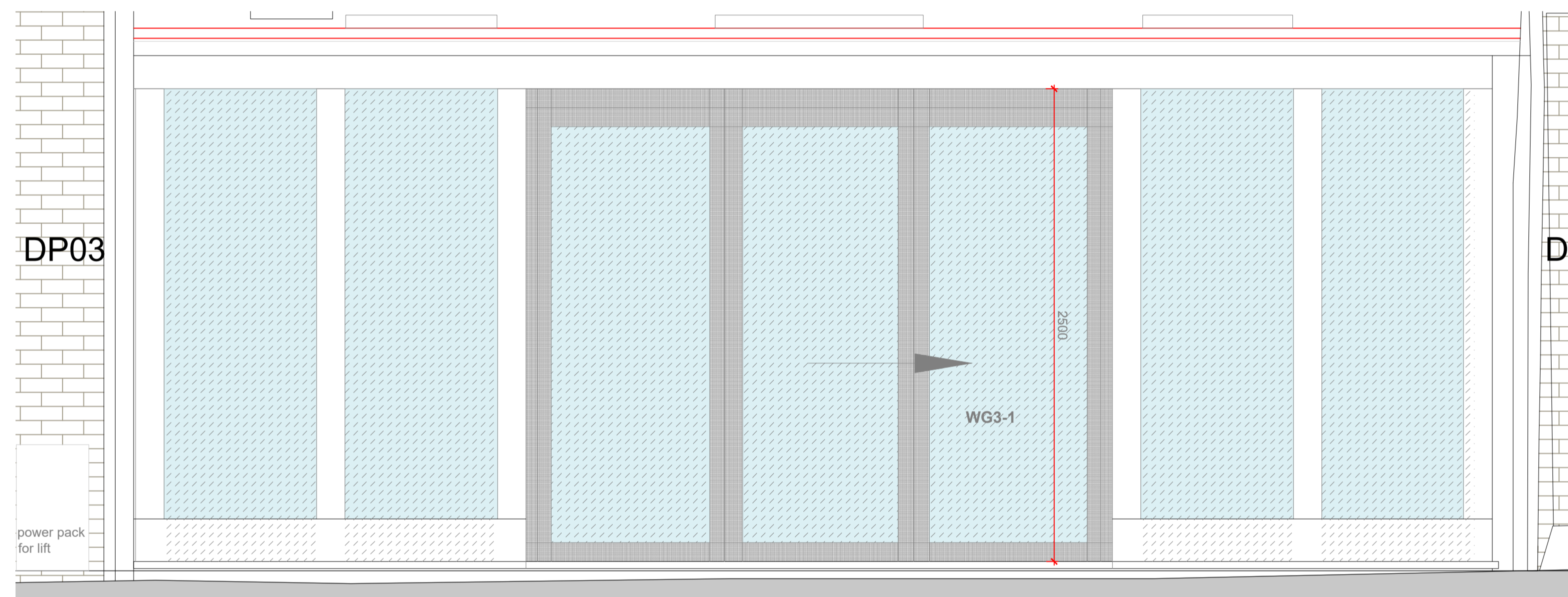
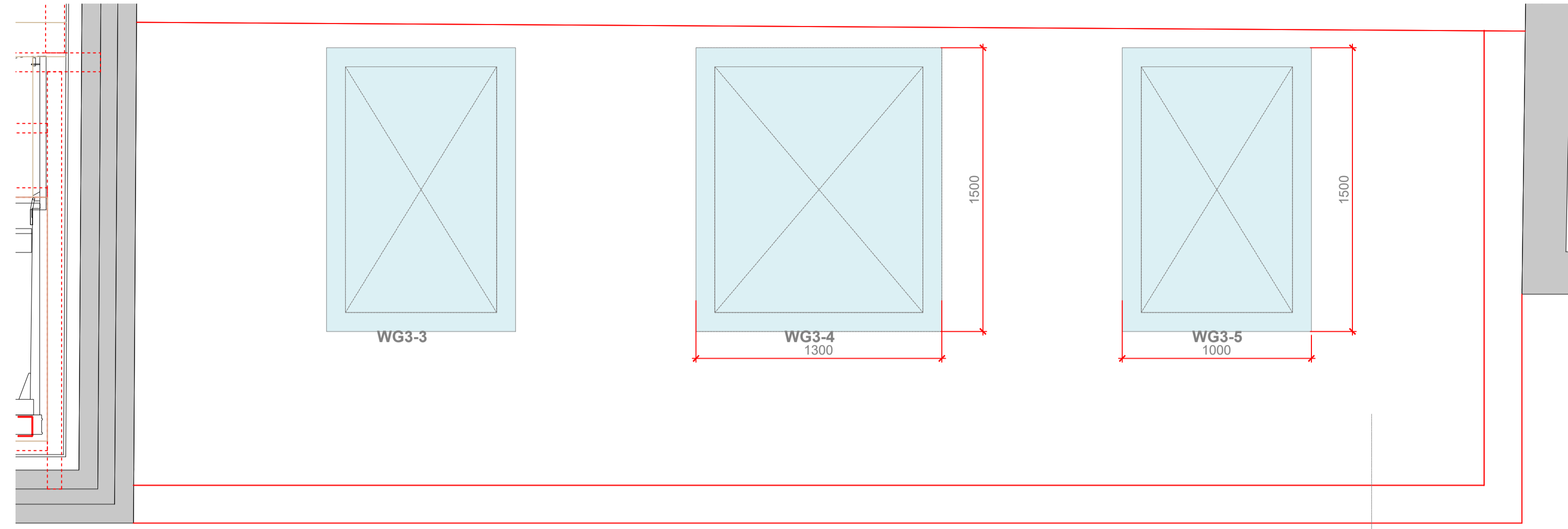
- WG2-2**
- Colour Internal Frame - White
  - Colour External Frame - French Gray
  - Type - Timber Casement Window
  - Opening - refer to drawing
  - Trickle Vent - to building regulations
  - Glass - double glazed clear
  - Notes - U-Value no higher than 1.4W/m²K for windows

**GENERAL NOTES**  
This drawings to be read in conjunction with GA-layouts and all dimensions to be checked on site.

Key to Drawing

- Denotes safety glass
- Denotes frosted glazing

G3 - Conservatory



- WG3-1**
- Colour Internal Frame - Oak
  - Colour External Frame - Oak
  - Type - Front of Conservatory with sliding doors
  - Opening - refer to drawing
  - Trickle Vent - to building regulations
  - Glass - double glazed safety glass
  - Notes - U-Value no higher than 1.4W/m²K for windows

- WG3-3, WG3-4, WG3-5**
- Colour Internal Frame - White
  - Colour External Frame - Black
  - Type - Metal
  - Opening - Fixed
  - Trickle Vent - to building regulations
  - Glass - clear
  - Notes - U-Value no higher than 2.2W/m²K for windows

A	General update.	19/02/24
Rev	Description	Date

Client  
Robert McLennan

Project  
Great Bragmans Farm  
Bragmans Lane, WD3 4NY

Description  
Phase 2 works:  
Proposed Window Schedule 1

Do not scale from this drawing

Scale@A1	Drawn	Date	Job No.	Drawing No.	Rev
1:20	JG	10/01/2024	4249	31-04	A