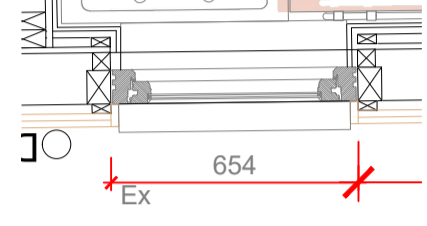
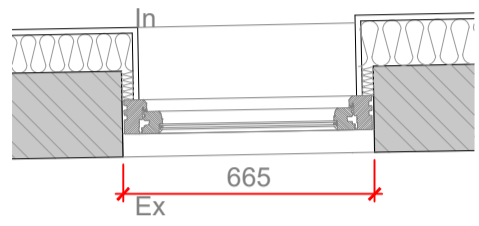
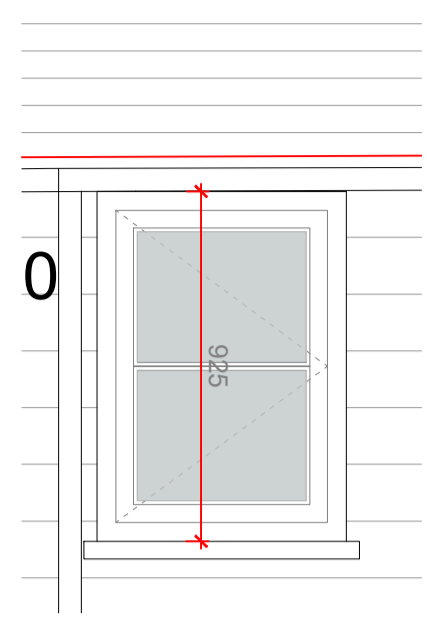
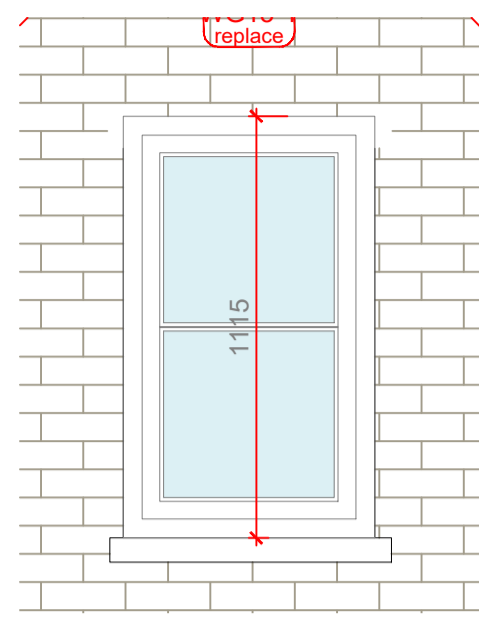


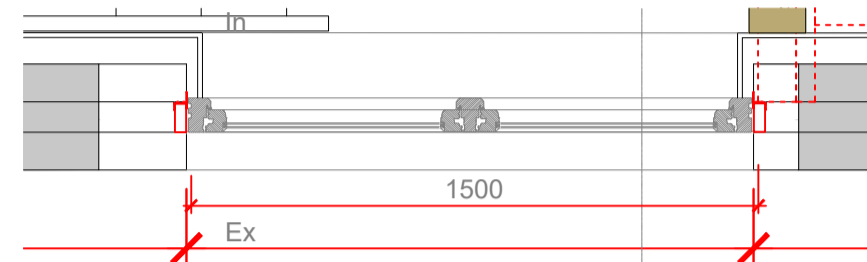
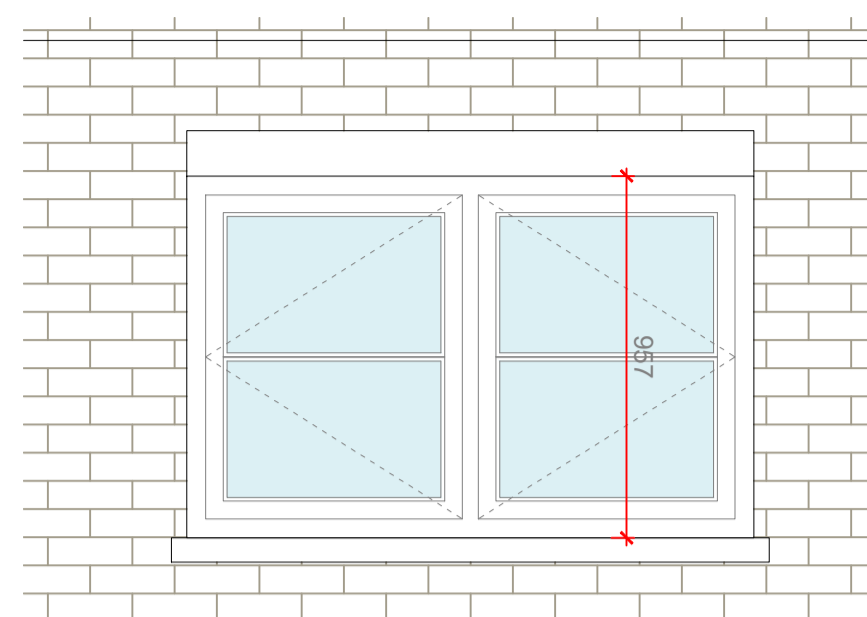
G13 - Plant Room and Utility



- WG13-1**
 Colour Internal Frame - White
 Colour External Frame - French Gray
 Type - Timber Window
 Opening - Fixed
 Trickle Vent - to building regulations
 Glass - double glazed clear
 Notes - U-Value no higher than 1.4W/m²K for windows

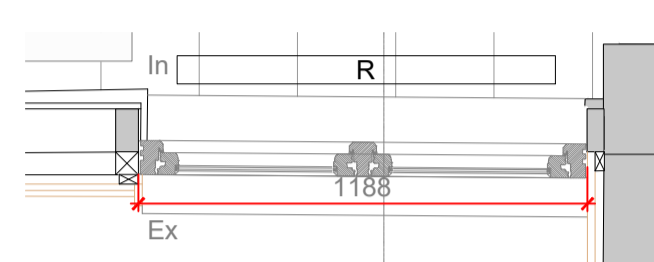
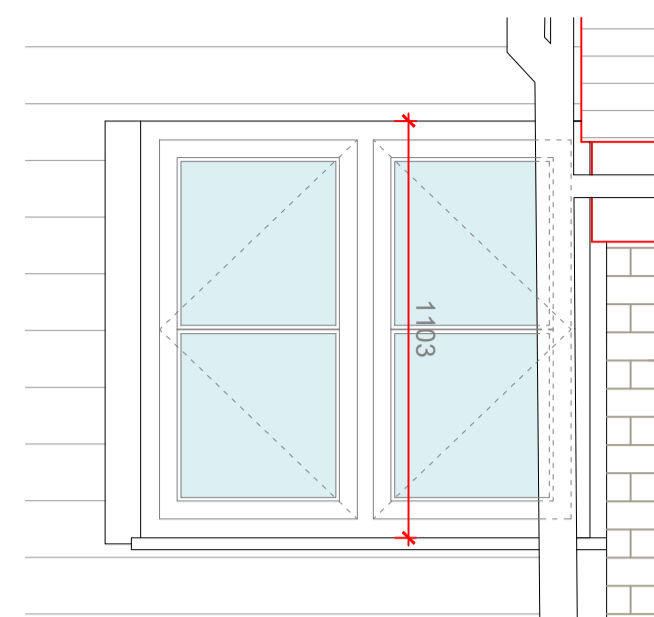
- WG13-2 (new opening)**
 Colour Internal Frame - White
 Colour External Frame - French Gray
 Type - Timber Window
 Opening - refer to drawing
 Trickle Vent - to building regulations
 Glass - double glazed frosted
 Notes - U-Value no higher than 1.4W/m²K for windows

F1 - Hall

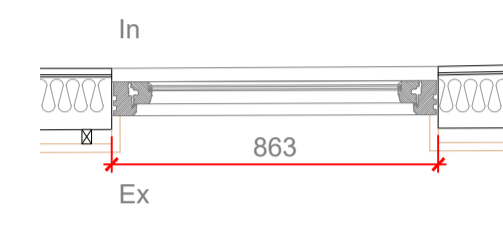
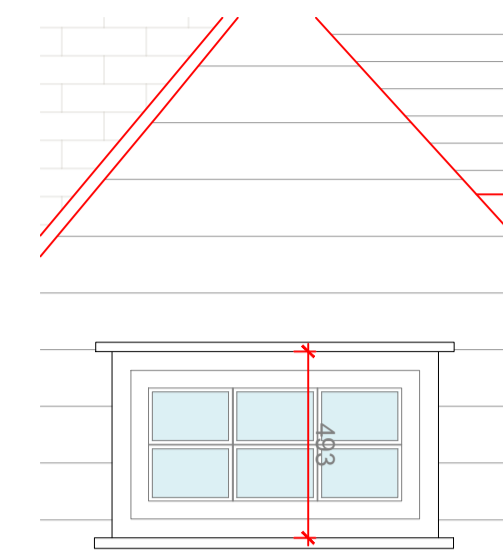


- WF1-1**
 Colour Internal Frame - White
 Colour External Frame - French Gray
 Type - Timber Casement Window
 Opening - refer to drawing
 Trickle Vent - to building regulations
 Glass - double glazed clear
 Notes - U-Value no higher than 1.4W/m²K for windows

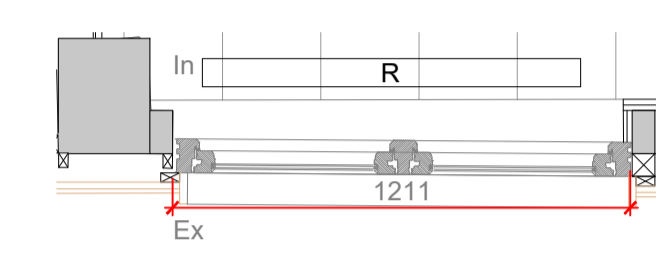
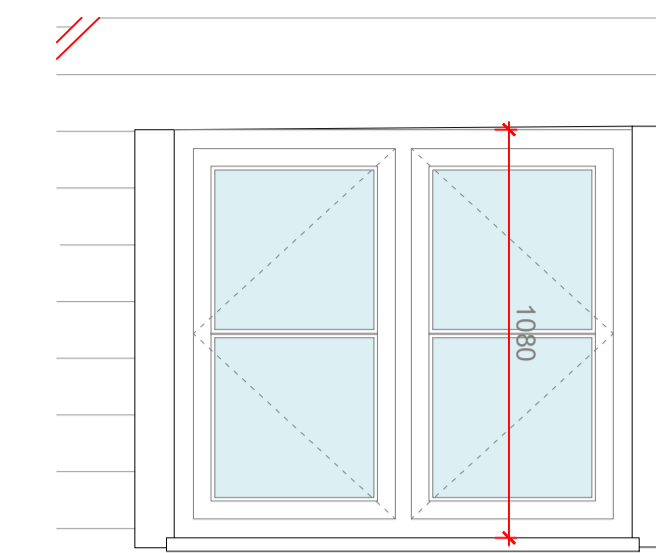
F2 - Bedroom



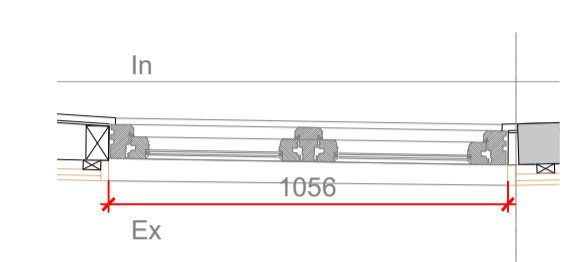
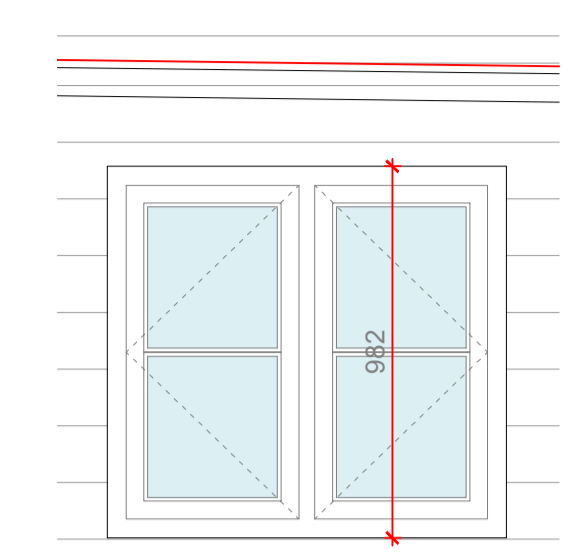
- WF2-1**
 Colour Internal Frame - White
 Colour External Frame - French Gray
 Type - Timber Casement Window
 Opening - refer to drawing
 Trickle Vent - to building regulations
 Glass - double glazed clear
 Notes - U-Value no higher than 1.4W/m²K for windows



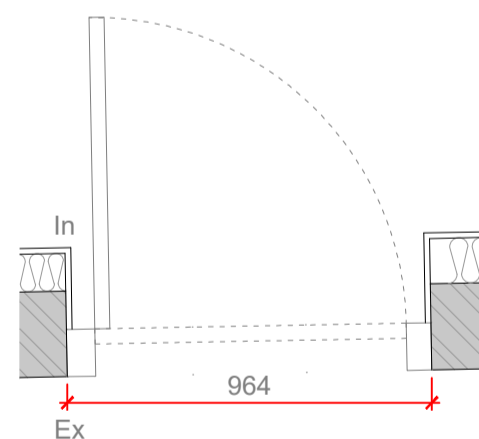
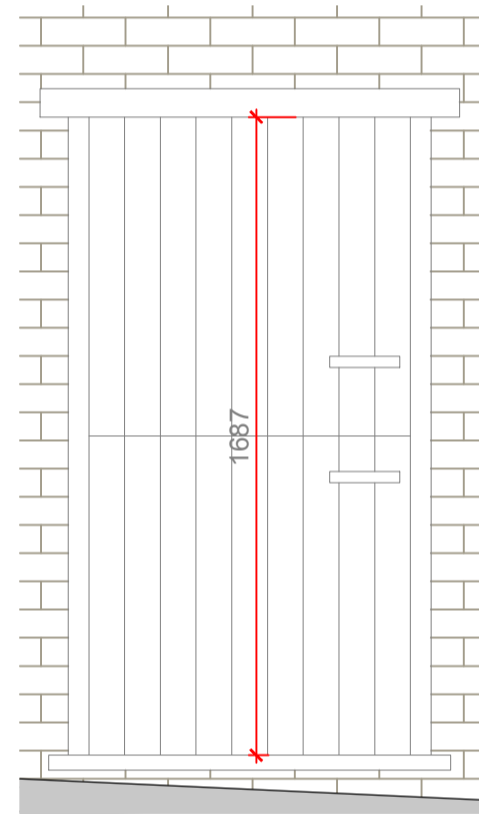
- WF2-2**
 Colour Internal Frame - White
 Colour External Frame - French Gray
 Type - Timber Casement Window
 Opening - N/A
 Trickle Vent - to building regulations
 Glass - double glazed clear
 Notes - U-Value no higher than 1.4W/m²K for windows



- WF2-3**
 Colour Internal Frame - White
 Colour External Frame - French Gray
 Type - Timber Casement Window
 Opening - refer to drawing
 Trickle Vent - to building regulations
 Glass - double glazed clear
 Notes - U-Value no higher than 1.4W/m²K for windows

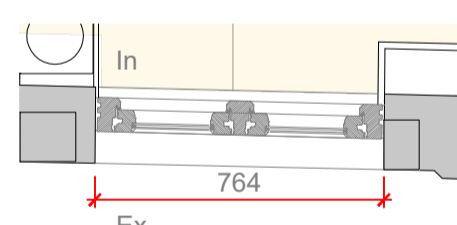
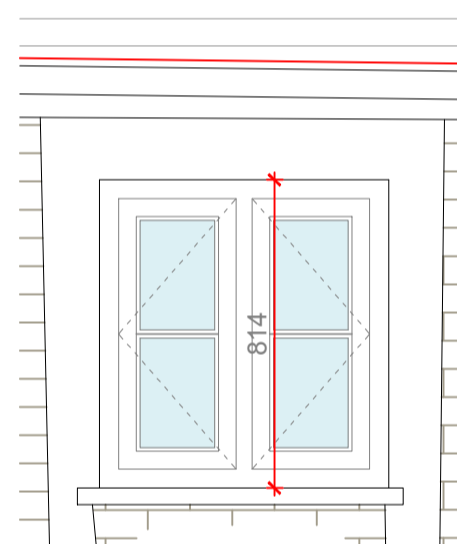


- WF2-4**
 Colour Internal Frame - White
 Colour External Frame - French Gray
 Type - Timber Casement Window
 Opening - refer to drawing
 Trickle Vent - to building regulations
 Glass - double glazed clear
 Notes - U-Value no higher than 1.4W/m²K for windows



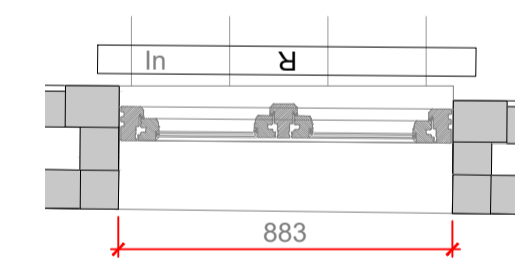
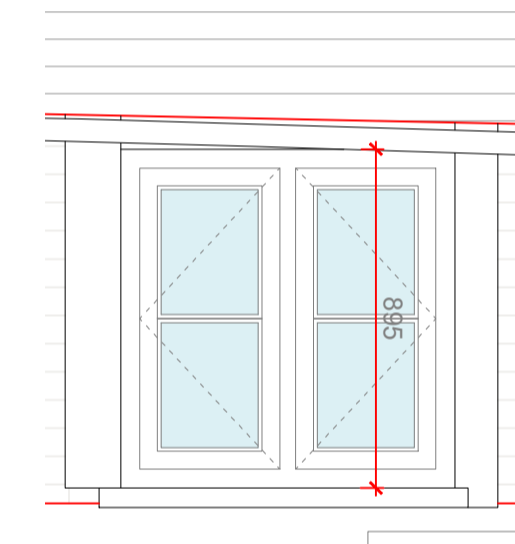
- Door 09**
 Type - Black Timber Doors
 Size - 1687x964x45mm
 Fire Rating - N/A
 Hinges - TBC by client
 Ironmongery - TBC by client
 Notes -

F3 - (Future Ensuite)

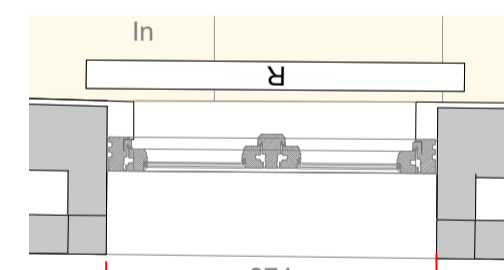
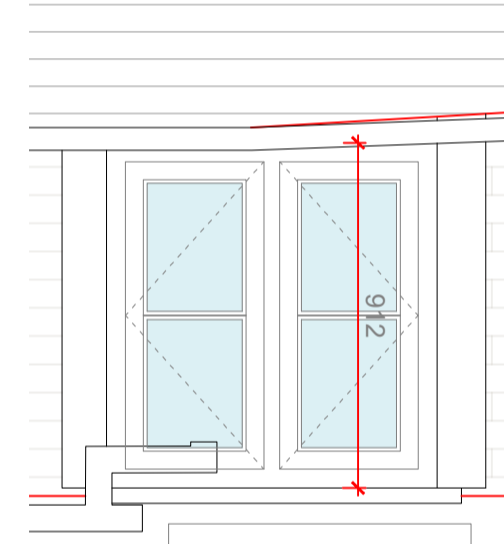


- WF3-1**
 Colour Internal Frame - White
 Colour External Frame - French Gray
 Type - Timber Casement Window
 Opening - refer to drawing
 Trickle Vent - to building regulations
 Glass - double glazed clear
 Notes - U-Value no higher than 1.4W/m²K for windows

F4 - (Future Ensuite)

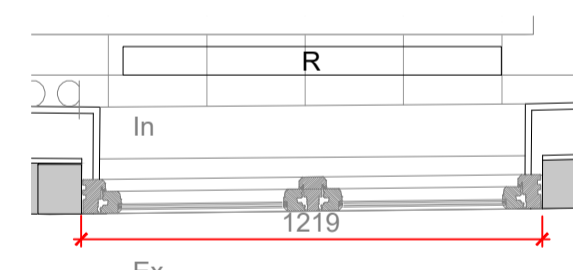
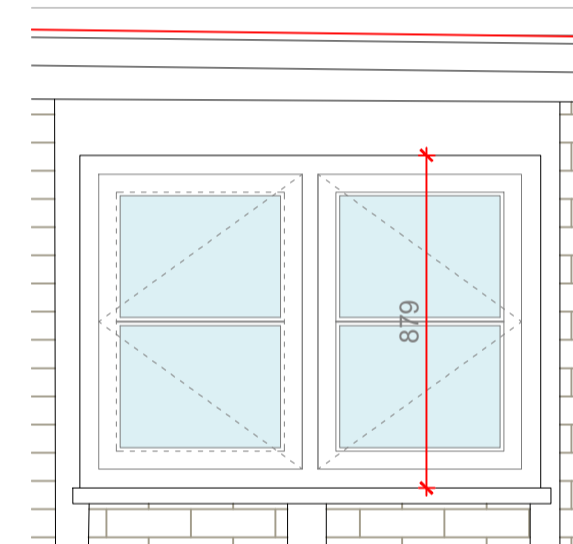


- WF4-1**
 Colour Internal Frame - White
 Colour External Frame - French Gray
 Type - Timber Casement Window
 Opening - refer to drawing
 Trickle Vent - to building regulations
 Glass - double glazed clear
 Notes - U-Value no higher than 1.4W/m²K for windows



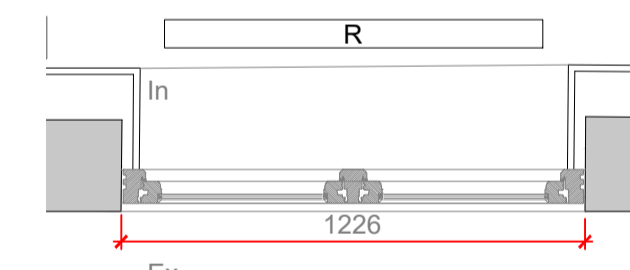
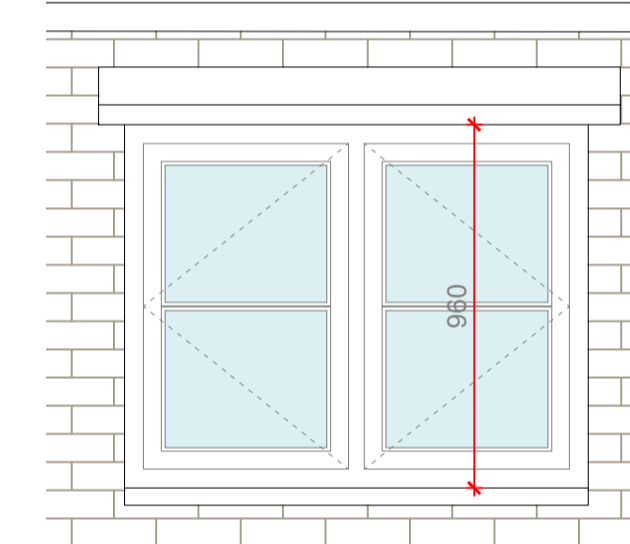
- WF4-2**
 Colour Internal Frame - White
 Colour External Frame - French Gray
 Type - Timber Casement Window
 Opening - refer to drawing
 Trickle Vent - to building regulations
 Glass - double glazed clear
 Notes - U-Value no higher than 1.4W/m²K for windows

F5 - (Future Bedroom)



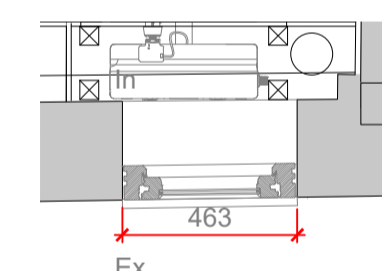
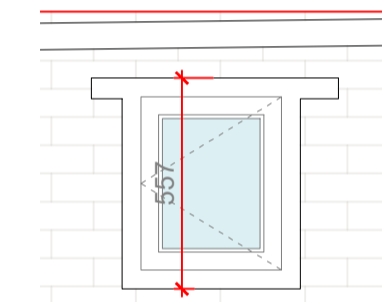
- WF5-1**
 Colour Internal Frame - White
 Colour External Frame - French Gray
 Type - Timber Casement Window
 Opening - refer to drawing
 Trickle Vent - to building regulations
 Glass - double glazed clear
 Notes - U-Value no higher than 1.4W/m²K for windows

F6 - (Future Bedroom)



- WF6-1**
 Colour Internal Frame - White
 Colour External Frame - French Gray
 Type - Timber Casement Window
 Opening - refer to drawing
 Trickle Vent - to building regulations
 Glass - double glazed clear
 Notes - U-Value no higher than 1.4W/m²K for windows

F6a - (Future Hall)

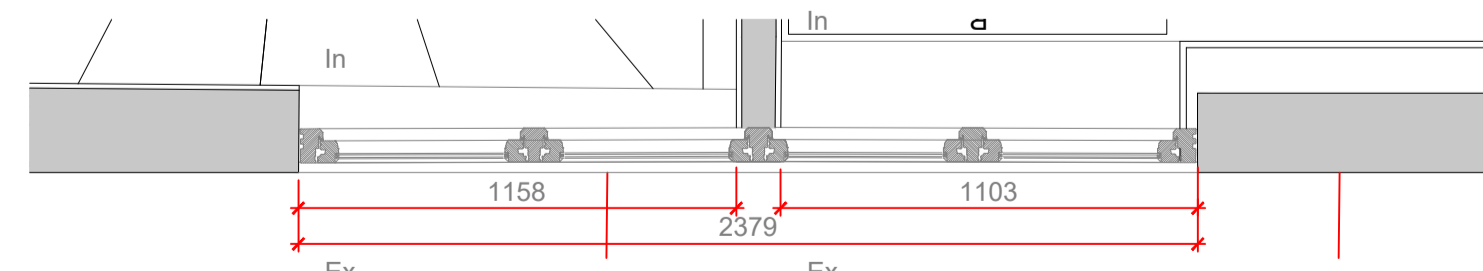
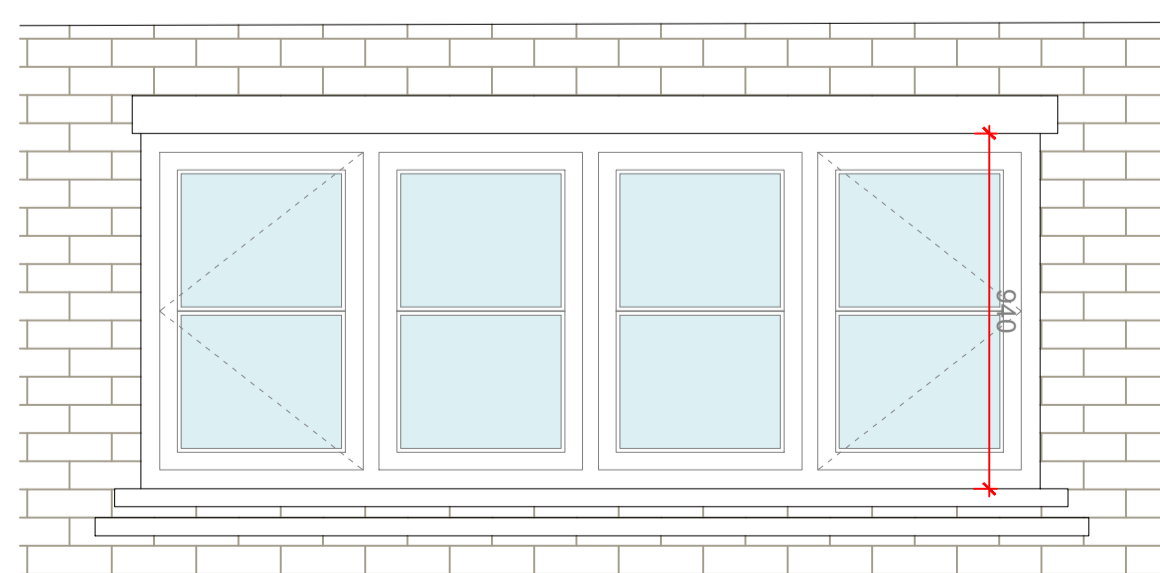


- WF6a-1**
 Colour Internal Frame - White
 Colour External Frame - French Gray
 Type - Timber Casement Window
 Opening - refer to drawing
 Trickle Vent - to building regulations
 Glass - double glazed clear
 Notes - U-Value no higher than 1.4W/m²K for windows

GENERAL NOTES
 This drawings to be read in conjunction with GA-layouts and all dimensions to be checked on site.

Key to Drawing
 Denotes safety glass
 Denotes frosted glazing

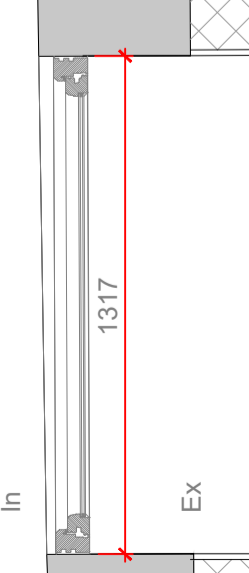
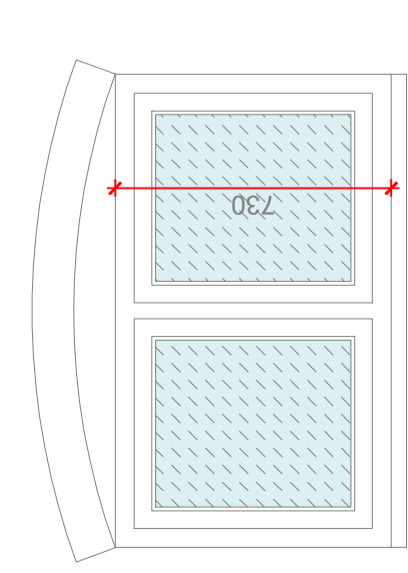
F7 - (Future Hall) and F8 - (Future Hall)



- WF7-12**
 Colour Internal Frame - White
 Colour External Frame - French Gray
 Type - Timber Casement Window
 Opening - refer to drawing
 Trickle Vent - to building regulations
 Glass - double glazed clear
 Notes - U-Value no higher than 1.4W/m²K for windows
Confirm all dimensions on site

- WF7-12**
 Colour Internal Frame - White
 Colour External Frame - French Gray
 Type - Timber Casement Window
 Opening - refer to drawing
 Trickle Vent - to building regulations
 Glass - double glazed clear
 Notes - U-Value no higher than 1.4W/m²K for windows
Confirm all dimensions on site

B1 Basement



- WB1-1**
 Colour Internal Frame - White
 Colour External Frame - French Gray
 Type - Timber Casement Window
 Opening - Fixed
 Trickle Vent - to building regulations
 Glass - double glazed frosted
 Notes - U-Value no higher than 1.4W/m²K for windows

Rev	Description	Date
Client	Robert McLennan	
Project	Great Bragmans Farm Bragmans Lane, WD3 4NY	Description Phase 2 works: Proposed Window Schedule 3
Do not scale from this drawing		Copyright Noades Architects Limited ©
Scale@A1	1:20	Drawn
1:20	JG	Date
		10/01/2024
		Job No.
		4249
		Drawing No.
		31-06
		Rev

NOADES
architects

1 The Sportsman, Station Approach, Chorleywood, Hertfordshire. WD3 5NA 01923 634867 www.noadesarchitects.com