



**Soft Landscaping Specification**

Mixed Standard trees plus tree shelter and stake.  
Planted individually in grass areas as detailed.

| Description                      | Size          | Qty |
|----------------------------------|---------------|-----|
| T1. Prunus (Cherry)              | 2500-3000mm.h | 3   |
| T2. Acer Campestre (Field Maple) | 2500-3000mm.h | 2   |
| T3. Sorbus Aucuparia (Rowan)     | 2500-3000mm.h | 2   |
| T4. Acer Rubrum (Purple Acer)    | 2500-3000mm.h | 2   |

**a. EXCAVATION**  
Excavate tree pits 1000 x 1000 x 750 mm. Loosen 300mm below pit to ensure free At time of planting enlarge pit if necessary to allow 75mm clear round edges of spread root system of plants. Add drainage pipe to base of pit if soil conditions require it.

**b. STAKES**  
2 No. peeled larch poles 2.7m long, 75mm minimum top diameter, without projections, pressures treated to BS 1282 with Tanalith or similar approved to 8.5kg per m3 minimum net dry salt retention.

**c. TIES & CROSS BOARD**  
1 No. 600mm long x 75mm wide, approved material with rubber buffer pads slotted for ties nailed to 100x25mm treated timber board. Trees placed to windward side of board and ties fixed.

**d. PLANTING**  
Drive 2 No. stakes into base of pit to min. depth of 450mm, 300mm apart at the centre of the pit, at an angle of 5-10° off vertical, facing outwards from centre. Remove tree from container & position between stakes taking care to preserve the rootball. Bind the ties in loops round the stakes. Draw stakes into vertical position fixing the top tie 50mm from top of stake with 2 No. 38mm galvanized nails and the 2nd tie immediately below. Check finished level of rootball and adjust to maintain original soil mark at surface.

**e. BACKFILLING**  
Provide approved non peat based tree & shrub mulching compost, 240 litres per tree pit. Backfilling consisting of approved imported Specialist Rain Garden Topsoil mixed with tree and shrub compost. Raise levels of the tree to the correct planting height. Cut back to sound growth any broken or damaged roots. Bare roots to be spread evenly, arranged to line on compost bed and maintaining correct overall depth of tree. Remaining compost to be placed in pit to cover roots. Roots to be gently shaken to allow penetration around roots and prevent air pockets. Backfilling continued with topsoil, tree and shrub compost and 500gms of Broadleaf P4 from Agricultural Polymers to allow top of pit to be level with surrounding ground levels after settlement, placed in 100mm firmed layers, 200gms of granular slow release fertiliser is to be spread around the base of the tree care being taken not to damage roots.

**f. WATERING/IRRIGATION**  
Incorporate 60mm perforated wavincoil pipe around rootball with pipe end brought to surface for watering. Pipe end to be trimmed to 50mm above ground level and supplied with cap end. Water to be capacity after completion of the planting operation and once per day for 1st 7 days if required. Refirm soil and make adjustments to levels if necessary.

**Hedge Planting**

Hedge in two staggered rows set 300mm apart  
Plants set at approx. 335mm centres at 7° per metre.

|                               |             |
|-------------------------------|-------------|
| Crataegus monogyna (Hawthorn) | 400-600mm.h |
| Prunus spinosa (Blackthorn)   | 400-600mm.h |

**a.** Over area to be planted, remove all stones over 50mm, debris and other deleterious material. Weedkill area with a suitable translocated total weedkiller at least two weeks before planting is to commence.

**b.** Excavate pits 450mm depth x 600mm wide and set aside soil for re-use.

**c.** Turn and break up sub-soil in base of trench to a depth of approximately 150mm.

**d.** Supply, spread and compact backfill mixture of topsoil and planting compost to underside of roots or root ball in consolidated layers as required to bring plants to nursery level, leaving no voids.

**e.** Remove all wrappings or containers and separate roots evenly taking care not to let them dry out.

**f.** Plant in two rows, 300mm between rows and 200mm apart or as detailed in the planting schedule.

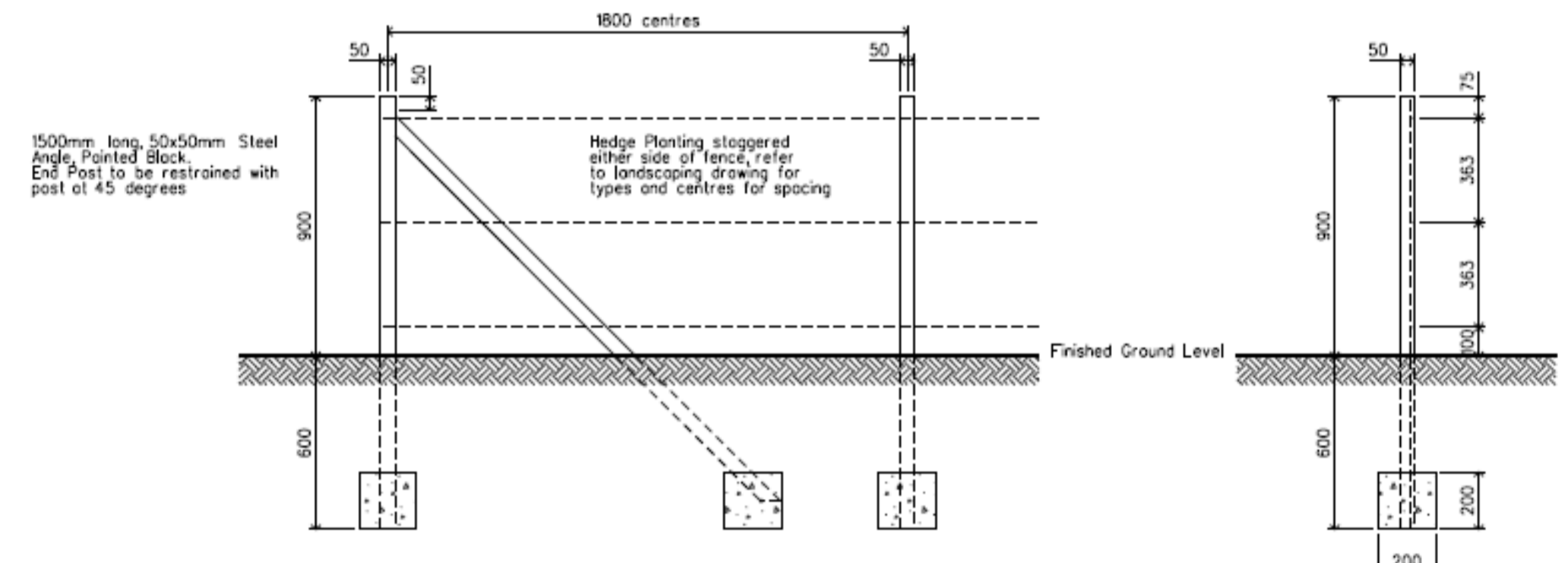
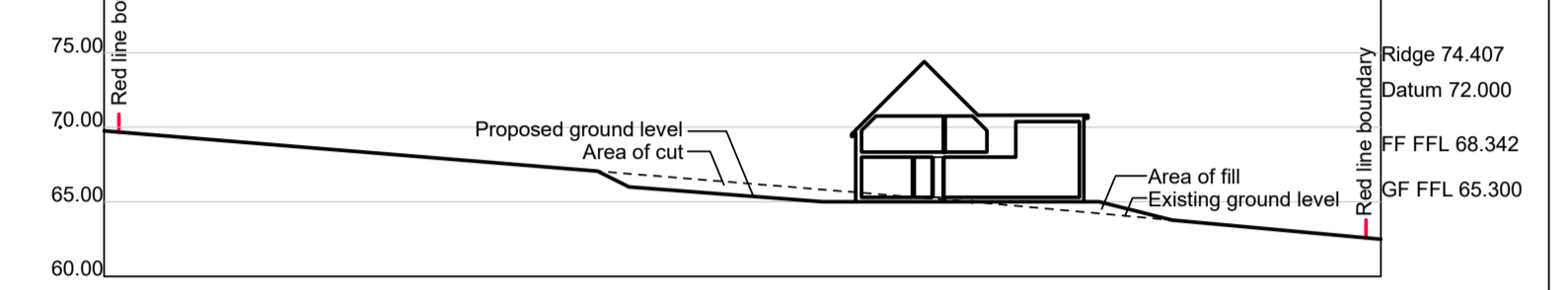
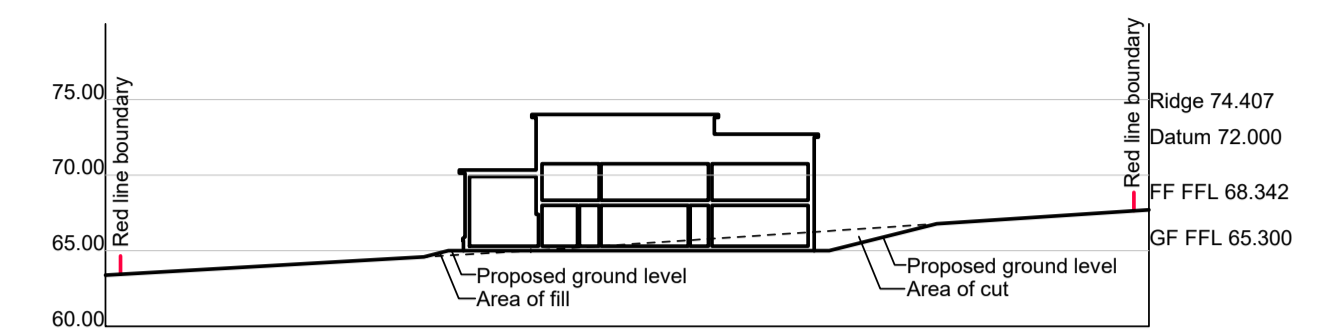
**g.** Continue backfilling carefully shaking into and around the root system and compacting evenly in 100mm layers, leaving no voids, taking care not to damage roots and then water thoroughly. Backfill mix to include 20 litres of approved tree and shrub mulching compost mixed with topsoil per metre run.

**h.** Ensure roots are well covered.

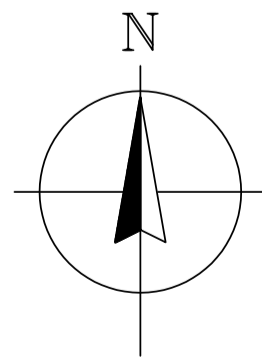
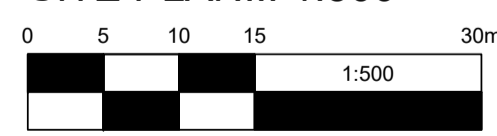
**i.** Spread 100 grams per metre run of slow release fertilizer around the base after planting.

**j.** All soil areas to be raked to a smooth even grade removing all stones over 38mm, taking care not to damage any plants. Spread a 75mm layer of composted bark over planting beds as detailed after planting.

**k.** Planted area to be kept weed and debris free after planting has been completed.



SITE PLAN... 1:500



|                             |               |
|-----------------------------|---------------|
| Rev. E - Sections added     | J.B. 23/04/24 |
| Rev. C - Details added      | J.B. 15/03/24 |
| Rev. B - Details added      | J.B. 12/03/24 |
| Rev. A - House repositioned | J.B. 21/02/24 |
| REVISION                    | INT DATE      |



28 Bank Street, Alton, Clackmannanshire FK10 1HP  
tel. 01259 216500  
email. gfd@greenfieldsdesign.co.uk

Title - Site Plan  
Project - Bolam-Peel / Polson  
Plot Adj. Glenfinnan, Findon

|       |            |              |            |
|-------|------------|--------------|------------|
| SCALE | 1:500      | DRAWN BY     | JB         |
| DATE  | 14/12/2023 | DRAWING NO.  | 11964-13'd |
| SHEET | A1         | PROJECT NAME | Bola1      |