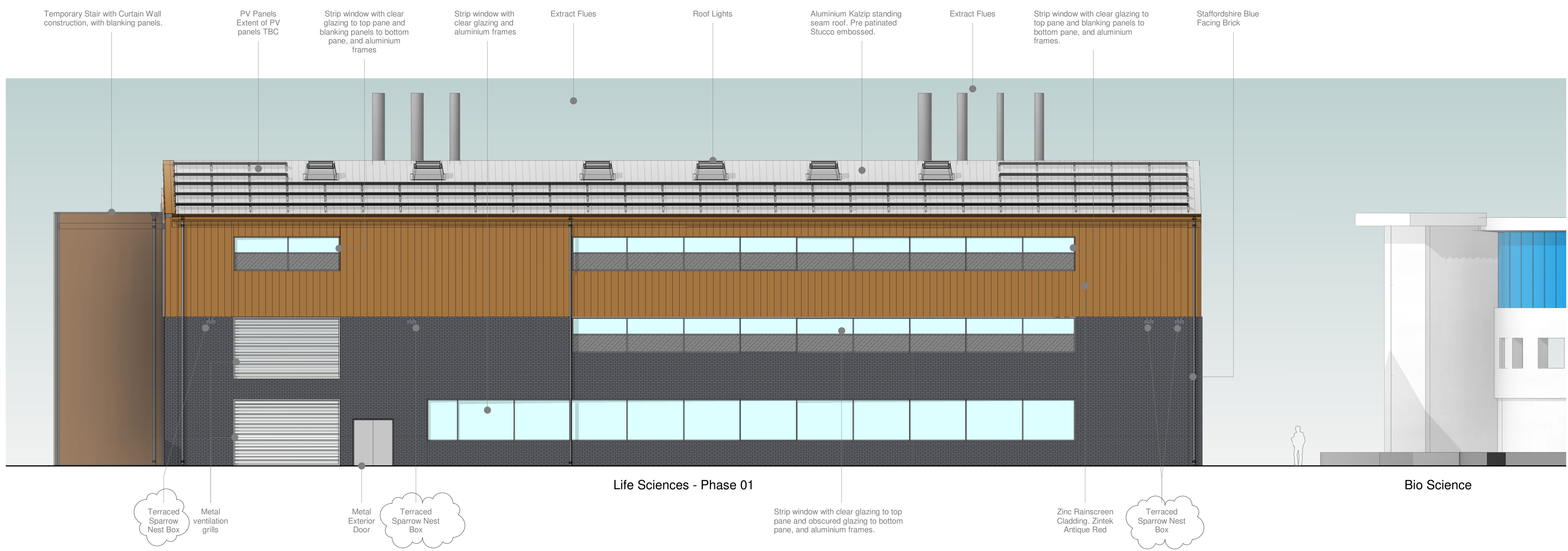


NOTE:
 1. ANY DISCREPANCIES TO BE REPORTED IMMEDIATELY TO THE ARCHITECT.
 2. ALL DIMENSIONS TO BE SITE CHECKED & VERIFIED BY THE CONTRACTOR PRIOR TO THE MANUFACTURE OR ORDER OF ANY MATERIALS OR GOODS.



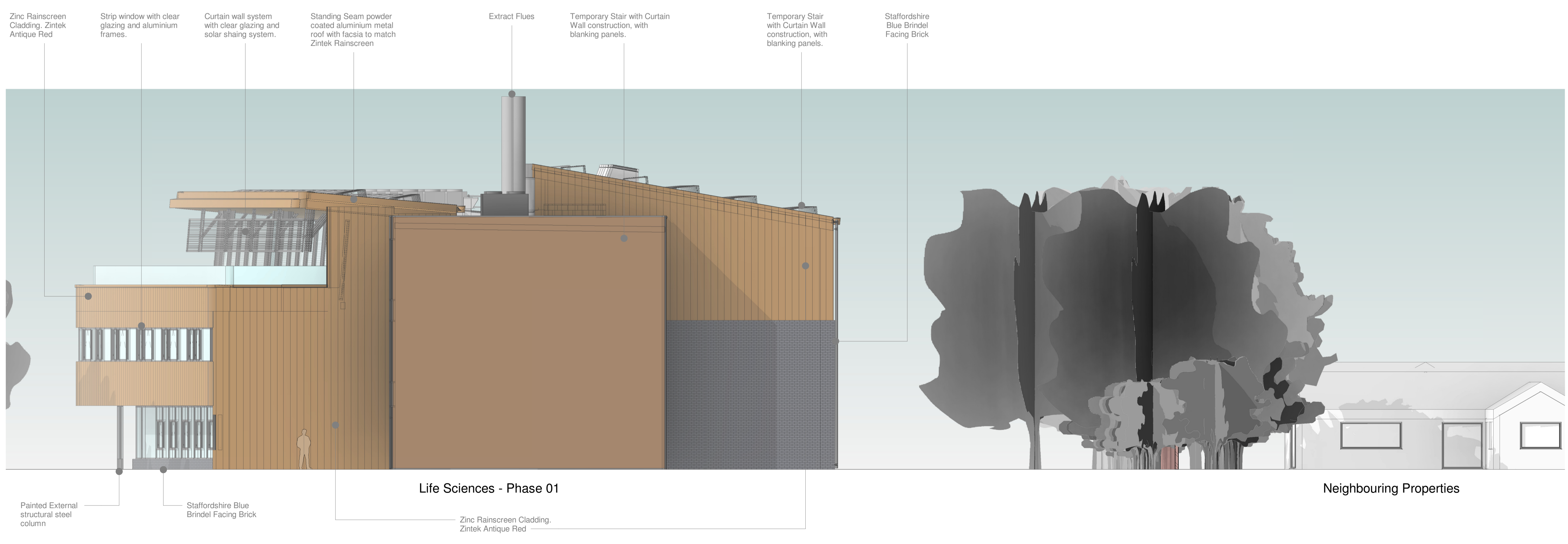
Bat Boxes:
 Number: 4
 The bat access panels should be sited at least 4 metres above ground level, ideally facing or close to areas of landscape planting or existing linear features. The access panels should not be positioned over windows or doorways where bat droppings may become a nuisance.

Suggested product: HabiBat 001 Bat boxes faced with Staffordshire Blue Brindle Brick

Bird Boxes:
 Number: 4
 The provisions for nesting birds will not be positioned over windows or doorways where droppings may become a nuisance. RSPB advice states that boxes should ideally be sited facing north to east, to avoid exposure to direct sunlight, which may cause overheating of chicks in the nest.

Suggested product: HabiBat Terraced Sparrow Nest Box faced with Staffordshire Blue Brindle Brick

Planning_North Elevation
 1 : 100



Planning_East Elevation
 1 : 100

P4	Discharge of conditions application - Bat and Bird boxes added to elevations	19.12.2023
P3	Non-material amendments	12.07.2023
P2	Material Specification Amendments	21.04.2023
P1	Planning Submission	29.07.2022
Rev	Description	Date

PLANNING

Proposed Life Sciences Building
 Edge Hill University,
 Ormskirk

GA Proposed Elevations 2 of 2

DRAWING NUMBER
3936-ABW-XX-XX-DR-A-11101P

DATE 07/11/22	REVISION P4	STATUS
SCALE 1 : 100	PURPOSE OF ISSUE	

ABW architects Ltd.
 architecture.building.workshop

A1
©