

7 Duke Street - MATERIAL DETAILS

WALL DETAIL

C16 TREATED TIMBER FRAME

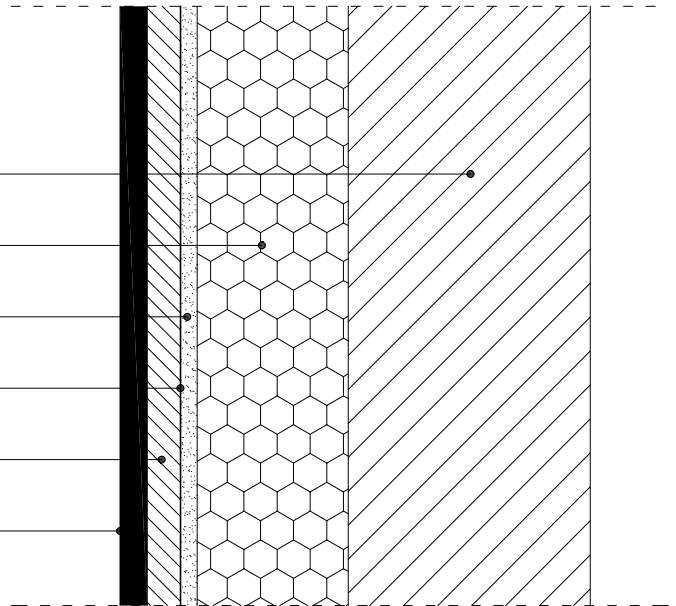
50MM KINGSPAN INSULATION BOARD & 25MM SOUNDPROOF ROCKWOOL

11 MM OSB BOARD

VAPOUR BARRIER

TIMBER BATONS 30mm X 2 HORIZONTAL AND VERTICAL

LARCH CLADDING 18 X 94 (86 LAID) LARCH T & G PROCLAD



FLOOR DETAIL

ENGINEERED HARDWOOD FLOORING

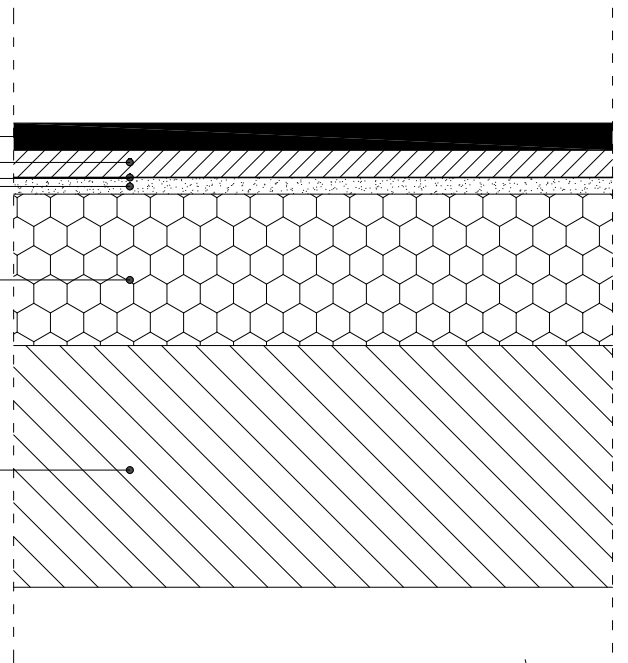
18 X 2400 X 600 P5 TRTD T&G CHIP/BOARD FLOORING

VAPOUR BARRIER

N/A

100MM KINGSPAN INSULATION BOARDS

C16/C24 TREATED TIMBER FRAME



ROOF DETAIL

MID GREY PVC-P WITH REINFORCEMENT SCRIM

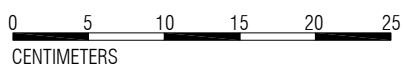
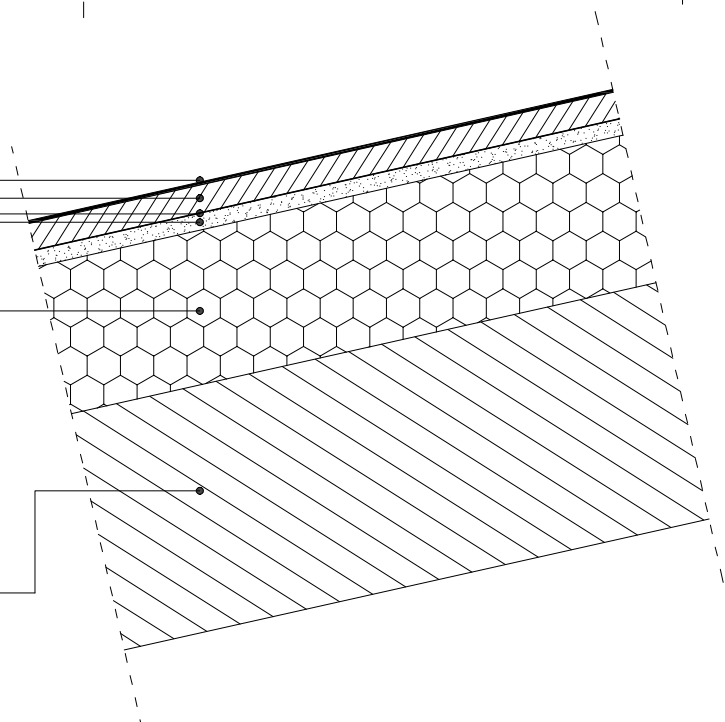
N/A

VAPOUR BARRIER

100MM KINGSPAN INSULATION BOARDS

22 MM OSB BOARD

C16/C42 TREATED TIMBER FRAME



CENTIMETERS