

HOLT COURT

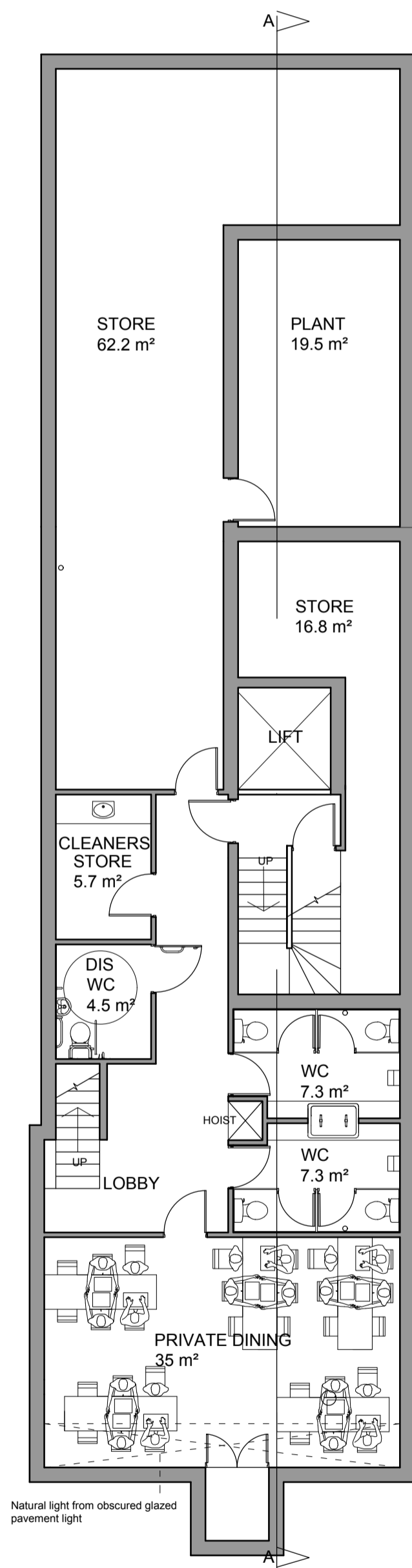
Squires outline

HORSEFERRY PLACE

THAMES STREET

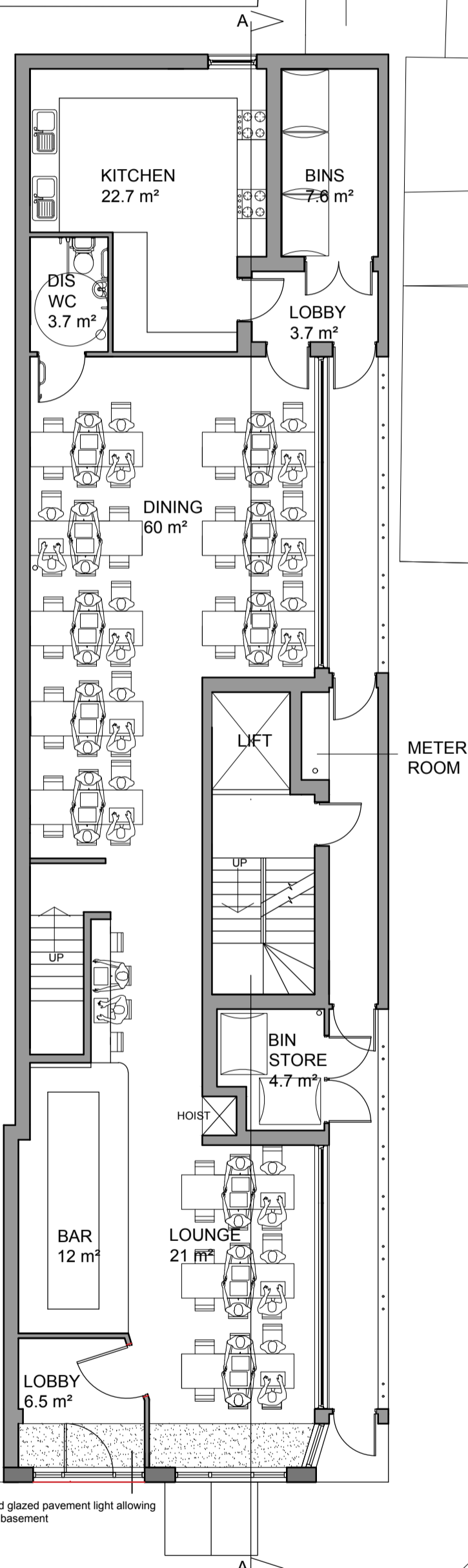
GROUND

FIRST

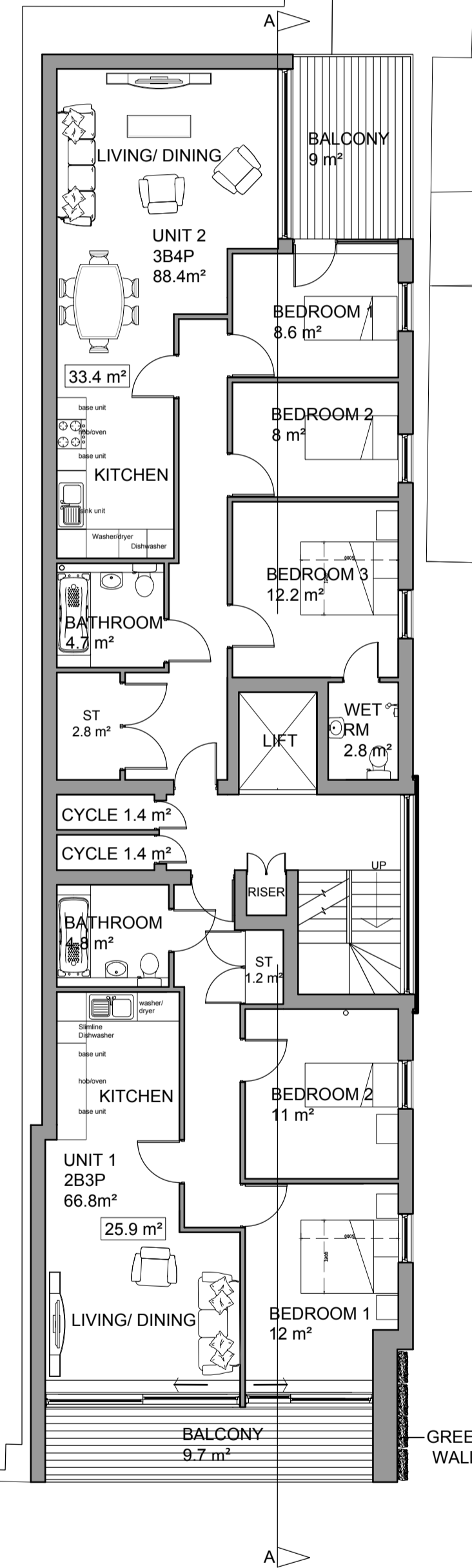


BASEMENT

Runners - 165.6 mm rising and 250 mm going
 20 steps - Basement to Ground
 Ground to First
 18 steps - First to Second
 Second to Third
 Third to Fourth
 Fourth to Fifth



GROUND



FIRST

AS APPROVED 194322MA

REV F : Green wall and arches added KR 19/09/16
 REV E : Green wall added KR 12/09/16
 REV D : General Revision CM 24/01/14
 REV C : Wetroom added to plans CM 15/01/14
 REV B : Revision for all floor plans CM 16/12/13

RUSSELL + MAY
 ASSOCIATES
 ARCHITECTURE AND PLANNING
 86 BLACKHEATH ROAD, GREENWICH, LONDON,
 SE10 8DA TEL: 0208 320 0950 FAX: 0208 320 0951

PROPOSED FLOOR PLANS

62 THAMES STREET
 GREENWICH
 LONDON SE10 9BX

PAGE SIZE : A1
 SCALE : 1:100
 DATE : 02/02/11
 DRAWN BY : MJG
 CHECK BY : PS
 Dwg No: 1057/10F

