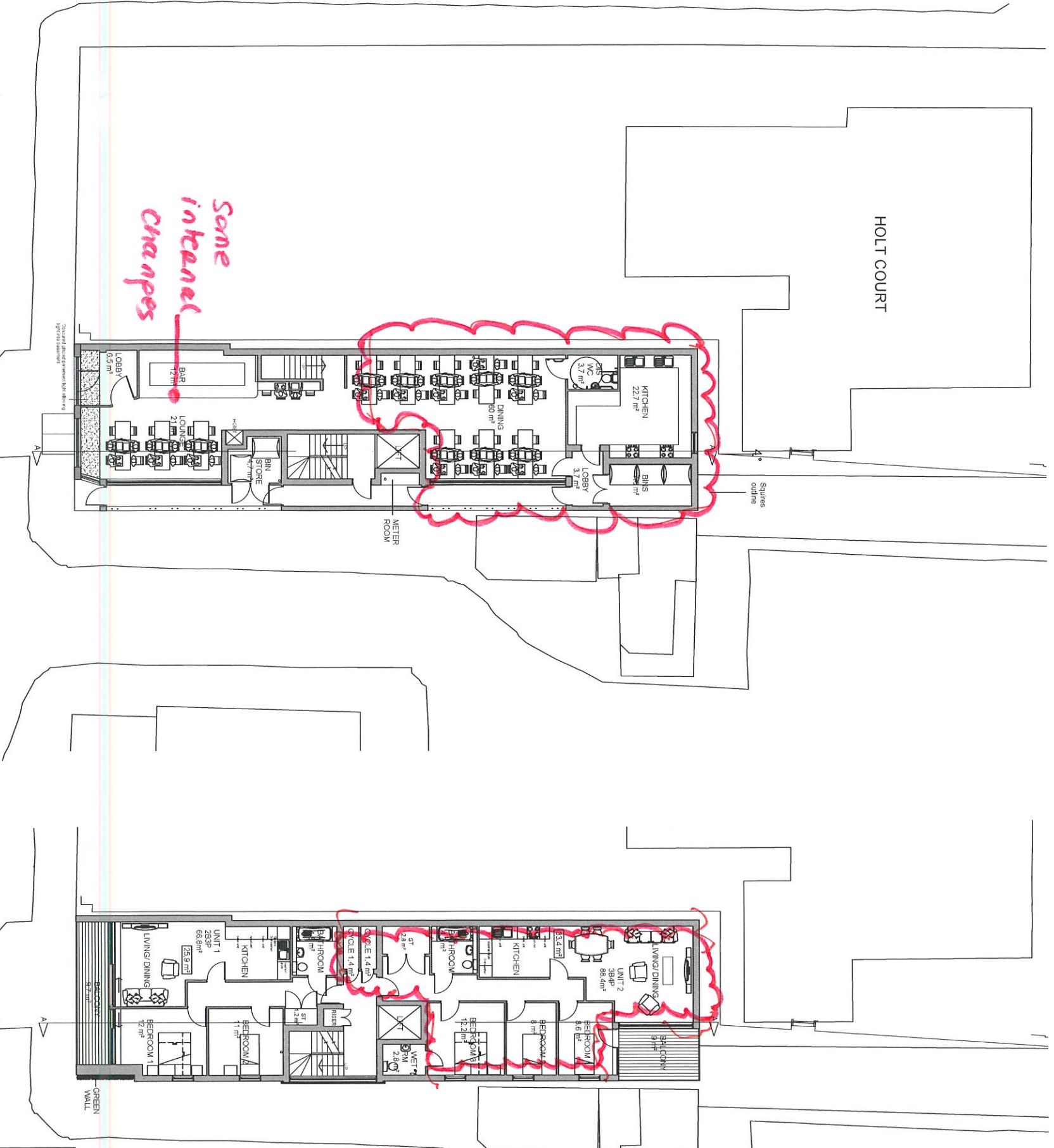


BASEMENT

HORSEFERRY PLACE



THAMES STREET

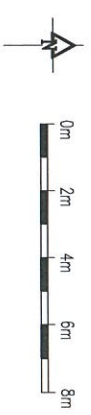
GROUND

FIRST

HOLT COURT

Souires outline

GREEN WALL



Revision as clouded

- REV. F: Green wall and arches added KR 19/09/16
- REV. E: Green wall added KR 12/09/16
- REV. D: General Revision CW 24/07/14
- REV. C: Windows added to plans CM 15/01/14
- REV. B: Revision for all door plans CM 16/12/13

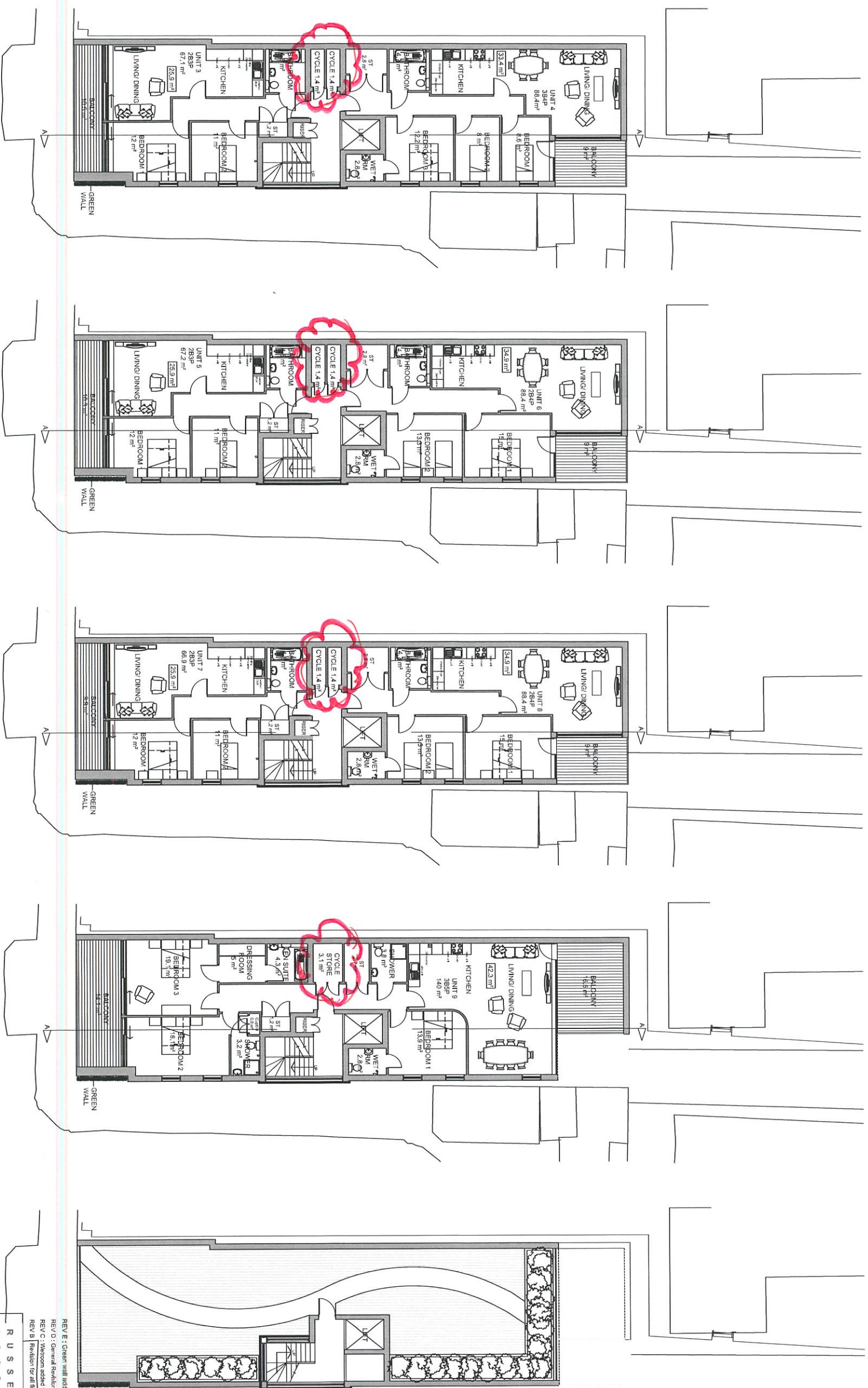
RUSSELL + MAY ASSOCIATES

66 BALCHGATE ROAD GREENWICH, LONDON, SE16 6DA. TEL: 0203 330 0999 FAX: 0203 330 0991

PROPOSED FLOOR PLANS

62 THAMES STREET GREENWICH LONDON SE10 9BX

PAGE SIZE	A1	Draw No.	1057/10F
SCALE	1:100		
DATE	1/03/2011		
DRAWN BY	MJS		
CHECK BY	PS		



Revision as clouded as bicycle store AS APPROVED 21/19/95 / SD

SECOND

THIRD

FOURTH

FIFTH

ROOF PLAN

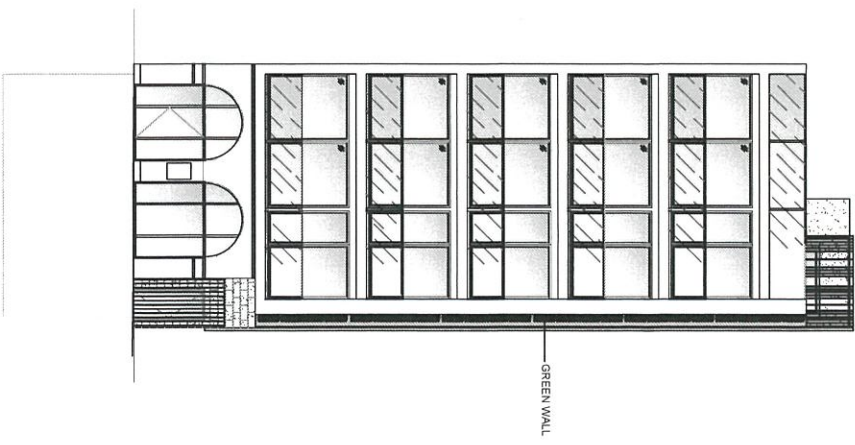
RUSSELL + MAY ASSOCIATES
 ARCHITECTS AND PLANNERS
 88 BLACKHEATH ROAD, GREENWICH, LONDON, SE10 8BB, TEL: 020 8591 1250, FAX: 020 8591 1251

PROPOSED FLOOR PLANS

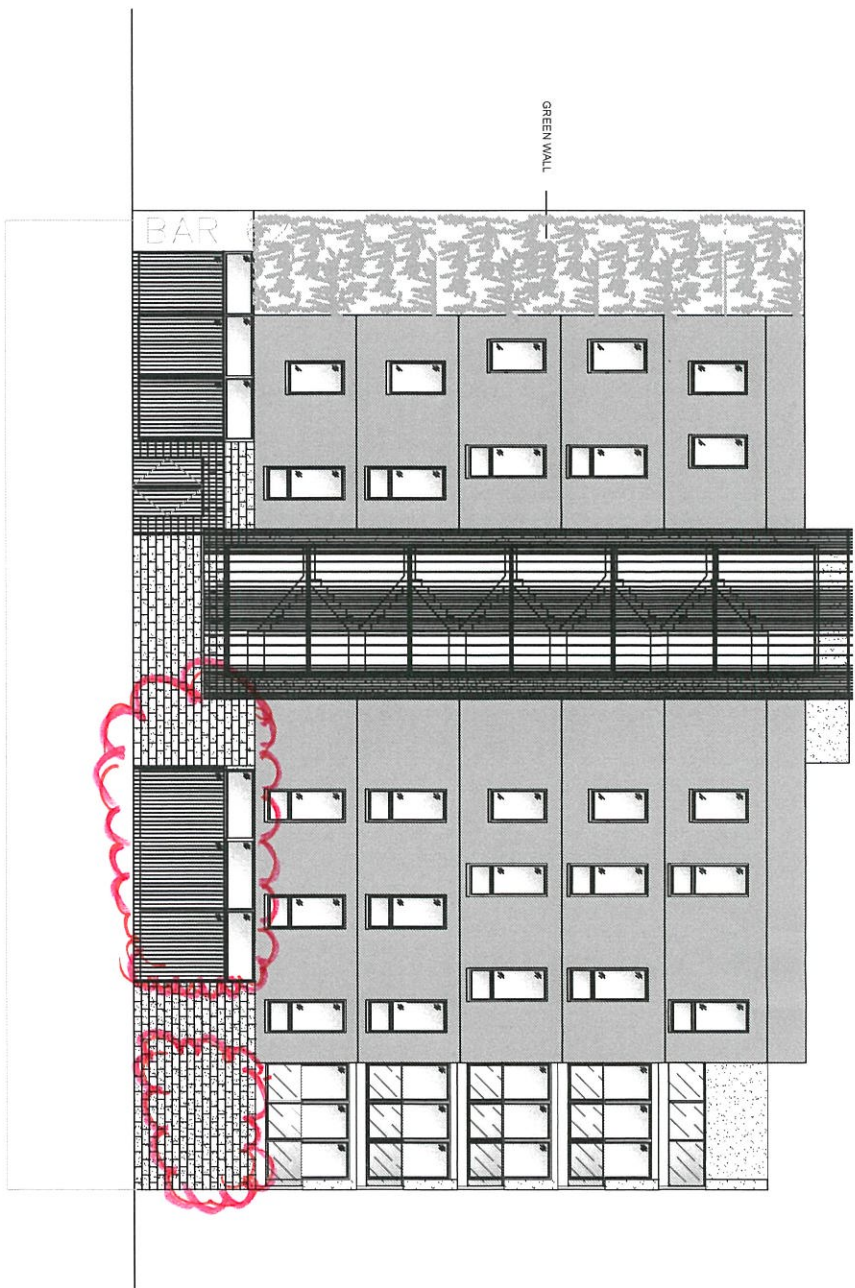
62 THAMES STREET
 GREENWICH
 LONDON SE10 9BX

PAGE SIZE :	A1	Dwg. No.:	1057/11E
SCALE :	1:100		
DATE :	02/02/11		
DRAWN BY :	MJS		
CHECK BY :	RS		

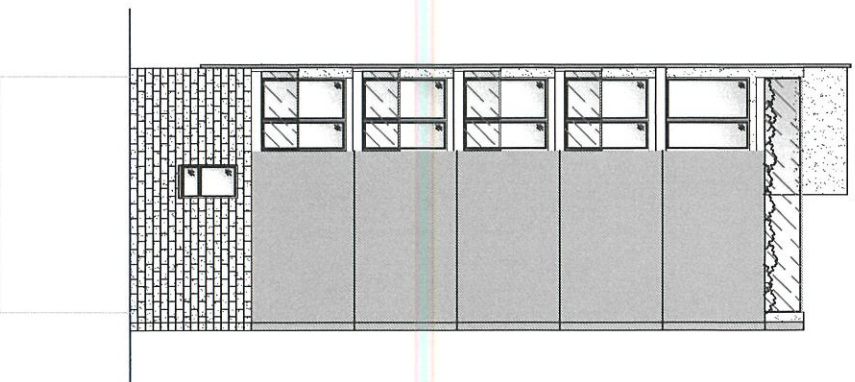
REV E : Green wall added
 12/09/16
 REV D : General Revision
 CM 24/01/14
 REV C : Windows added to plans
 CM 15/01/14
 REV B : Revision for all floor plans
 CM 18/12/13



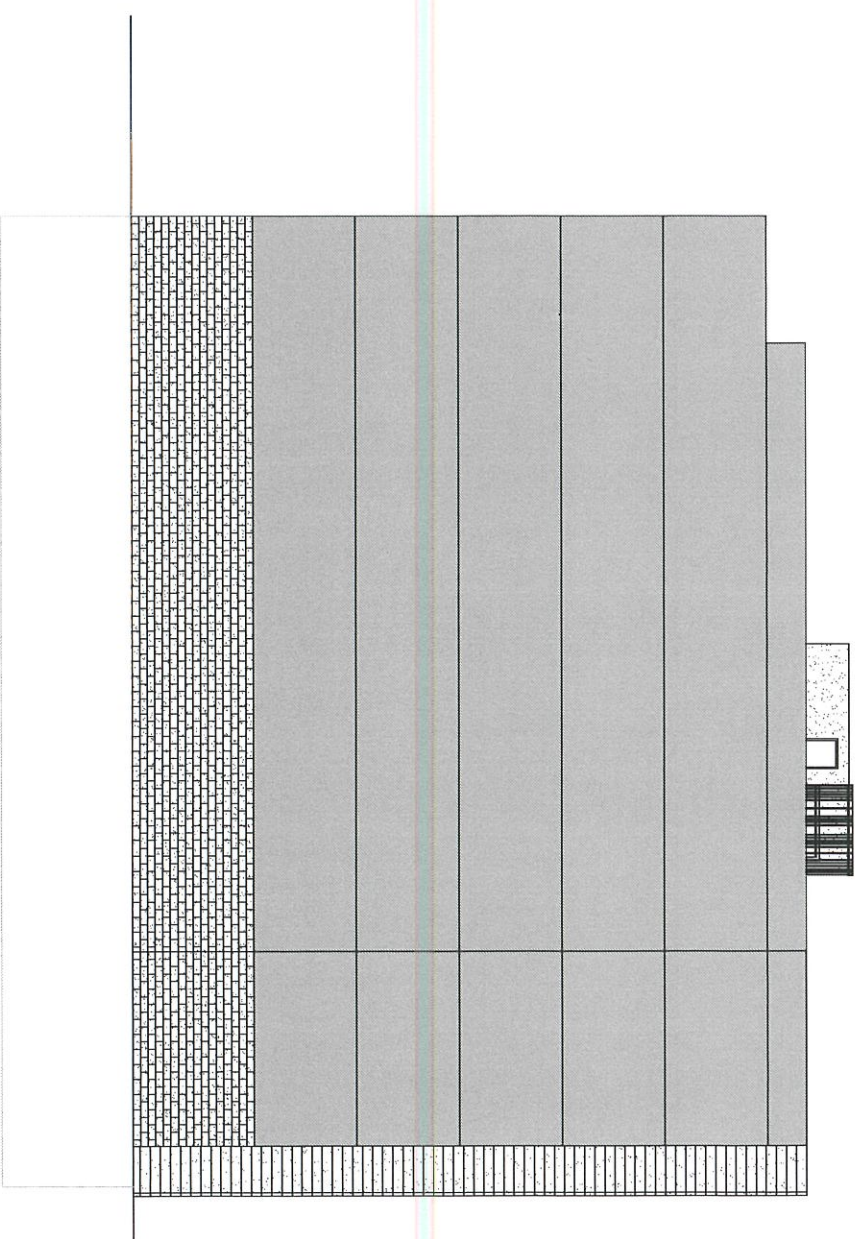
SOUTH ELEVATION



EAST ELEVATION



NORTH ELEVATION



WEST ELEVATION

*Revision AS
CLAUDED*

REV. F: Green wall and arches added KR 19/09/16
 REV. E: Green wall added KR 12/09/16
 REV. D: General Revisions CM 23/07/14
 REV. C: Revision of all floor plans CM 16/12/13

RUSSELL + MAY
 ARCHITECTS AND PLANNERS
 86 BLACKHEATH ROAD, GREENWICH, LONDON,
 SE10 8JX, TEL: 0203 320 0995 FAX: 0203 320 0991
PROPOSED ELEVATIONS
 62 THAMES STREET
 GREENWICH
 SE10 9BX

PAGE SIZE	A1	Dwg. No	105712F
SCALE	1:100		
DATE	23/07/10		
DRAWN BY	EP		
CHECK BY	PR		