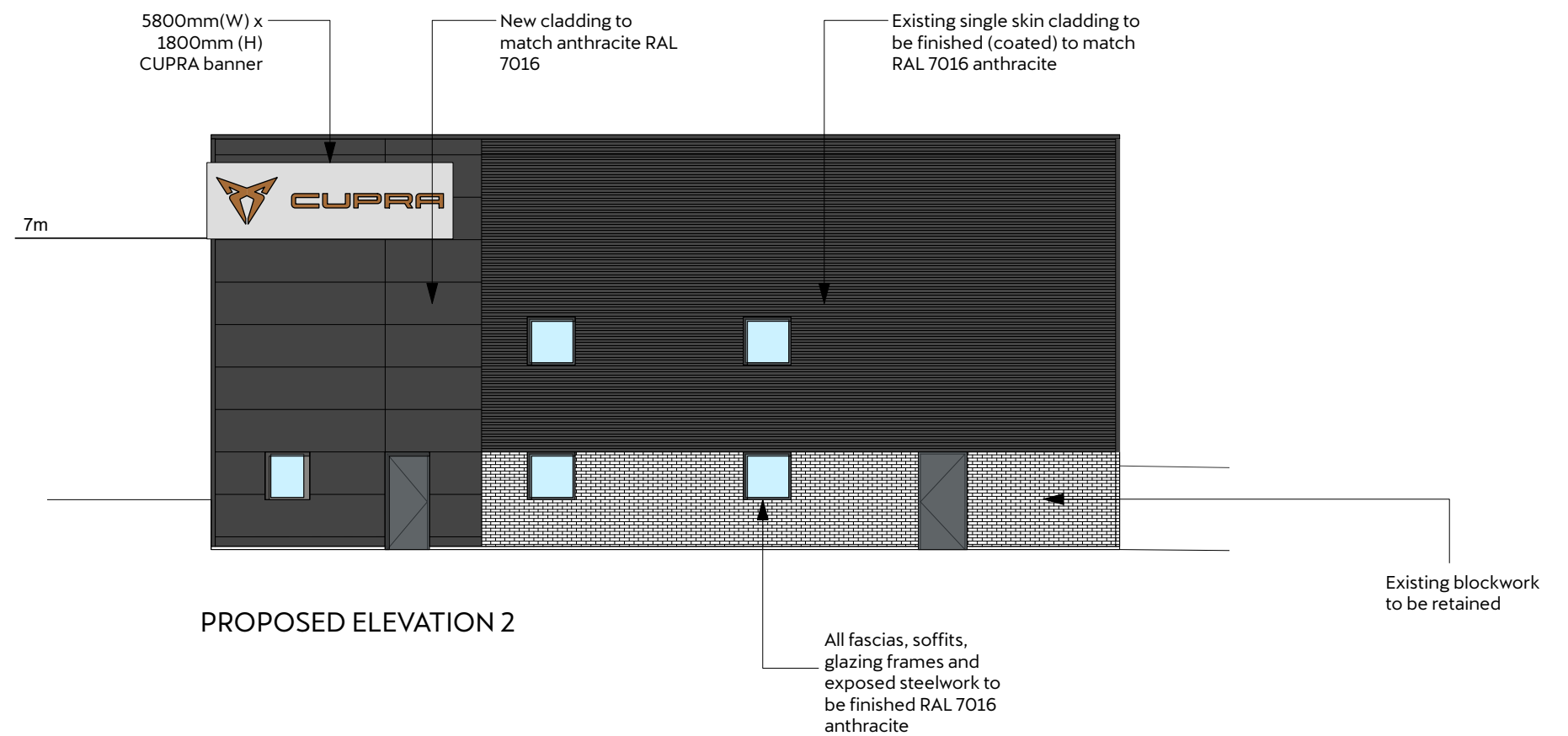


PROPOSED ELEVATION 1



PROPOSED ELEVATION 2



Seat fascia sign - static and internal illumination by white LED's ACM, aluminium and acrylic in grey and black. Fitted to the building by Tek screws

Dealer name sign - static and internal illumination by white LED's ACM, aluminium and acrylic in anthracite and white. Fitted to the building by Tek screws

Cupra fascia sign - static and internal illumination by white LED's ACM, aluminium and acrylic in grey and copper. Fitted to the building by Tek screws

Portico - Non-illuminated. Steel, aluminium and GRC. Bolted to the ground using chemical anchors

NOTES:
- Ground works to be carried out to allow for correct positioning of all new SEAT / CUPRA signage.

 		John Clark Aberdeen Proposed Elevations 1 & 2	
Scale	1:150@ A3	Status	Issue 2.0
Date	14/02/24	Drawn	EA/GG
		Checked	GG
Drawing	SE002_303	009	---