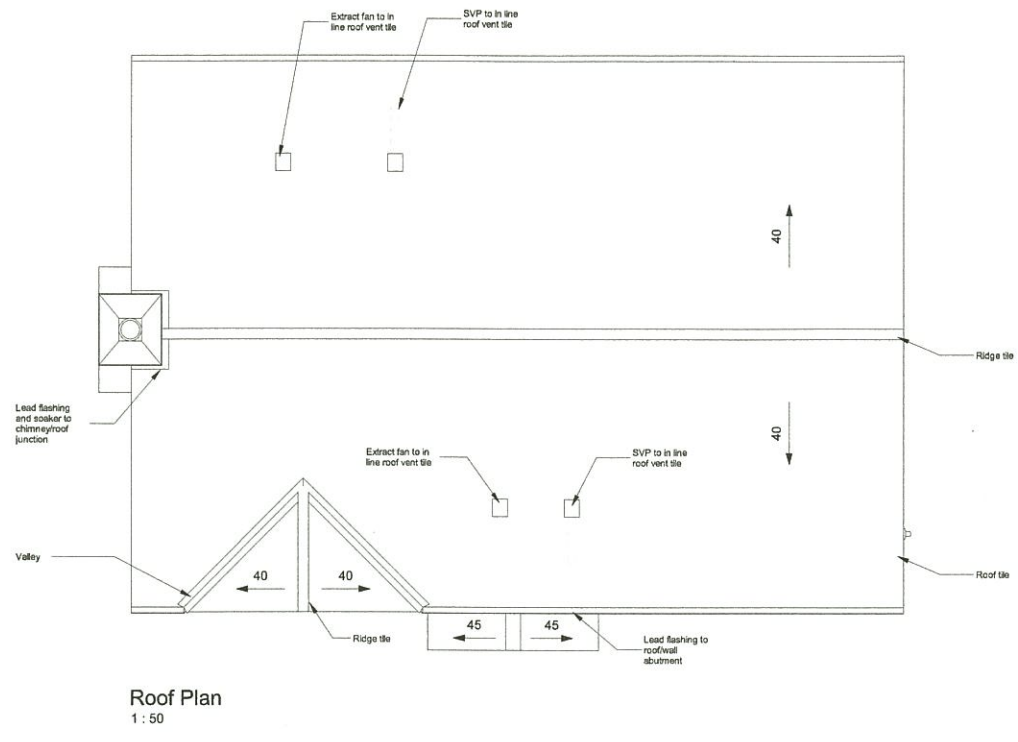
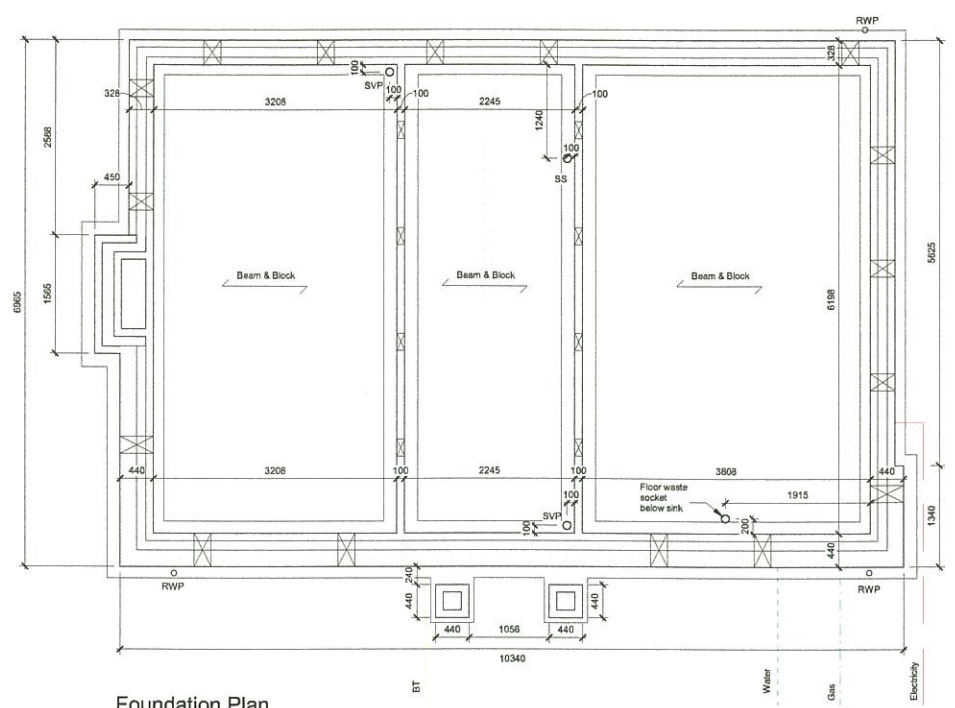


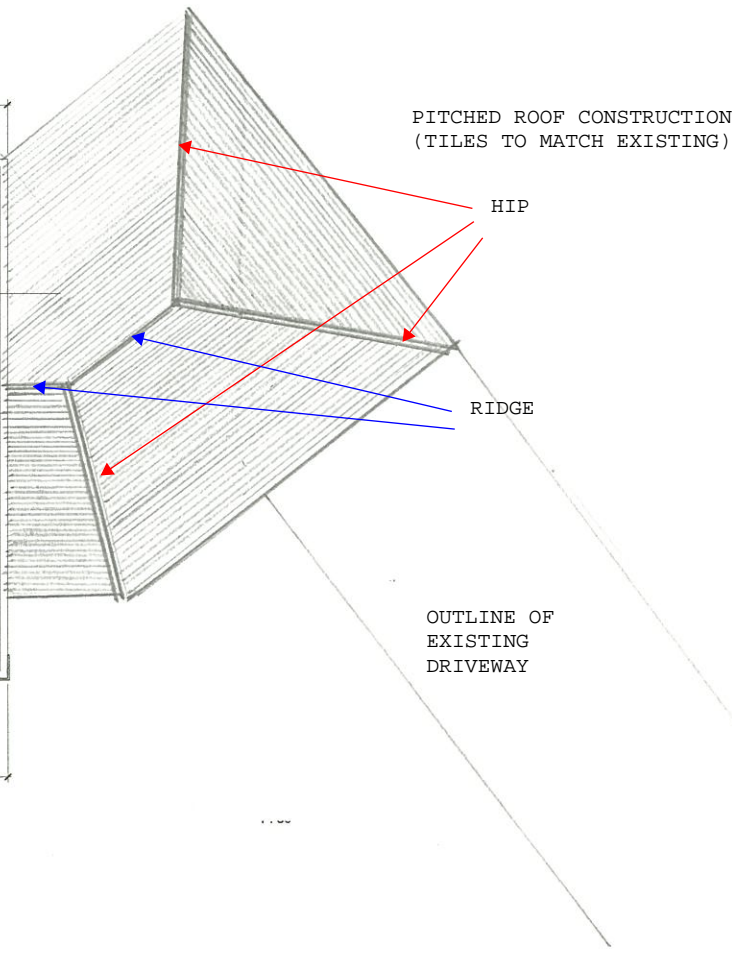
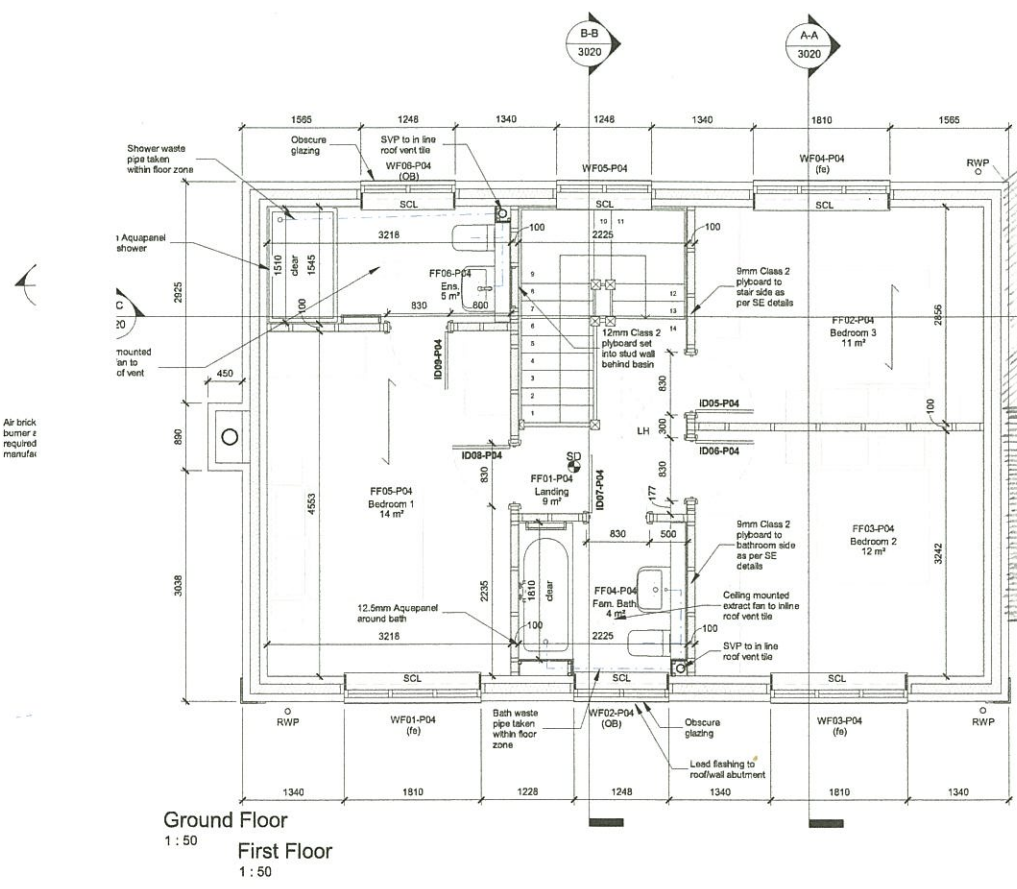
NOTES:
 NOTE: NO DIMENSIONS TO BE SCALED FOR CONSTRUCTION. DRAWINGS MAY BE SCALED FOR PLANNING PURPOSES ONLY. ALL DIMENSIONS TO BE CHECKED ON SITE. COPYRIGHT RESERVED.



Key:
 SVP/ SS Slab Stack with durpo valve / Soil and vent pipe; see Notes Pages for details.
 RWP Rain water pipe
 SD HD CMD Mains operated interlinked Smoke/Heat Detector and Carbon Monoxide Detector.
 (fa) Window references with (fa) denotes fire egress windows in all habitable rooms at the upper storey complying with Approved Document Part B1, paragraph 2.8. Bottom of the operable area should be not more than 1100mm above the floor. Refer to Construction Notes for windows / glazing with sill less than 600mm above internal floor level.
 (OB) Windows references with (OB) denotes obscure glass
 --- Lintels over openings for drainage pipes and floor void openings. Fill all gaps with Rockwool insulation where pipes pass through wall to stop ingress of vermin.
 LH Loft access to all eaves voids to be insulated & filled with moisture / draft seals as required but generally voids to be on warm side.
 --- Span of floor/roof structure above.
 EF Extract fan taken to up to 75mm roof tile vent or elevation (ducts installed within floor space where possible) to comply with Approved Document Part F. Also see Construction Notes for details. Ventilation system to be decentralised continuous mechanical extract (System 3) by Greenwood Unity CV2GIP fan (or similar approved).
 ⊠ Periscope vents with approved pattern terracotta brick (air bricks to sleeper walls) at 2.0m centres to ventilate floor void with cavity trays over. Vents opening area to be 1500mm² run of external wall or 500mm² of floor area whichever is greater.
 --- Beam / Stair trimmers to Structural Engineer's / Joist specialist design and specification.
 --- Indicative drainage route

Note:
 Foundations, ground floor structure, blockwork and other relevant structural components to Structural Engineer's and specialist manufacturer's design, details and specification.
 All drawings must be read in conjunction with Structural Engineers drawings and calculations by 'Struct' and drawings and specification by beam and block manufacturer.
 Position of movement joints as designed by Structural Engineer. Movement joints, mastic sealed see Notes Pages for details. Provide approved pattern wall fix with clebrating sleeves at movement joints as required.
 To be read in conjunction with M&E drawings for ventilation and heating system design and specification.
 All drawings must be read in association with the designs, drawings, specifications and calculations prepared by the structural engineer. The structural engineer (Struct) remains solely responsible for all structural information shown on the drawings including but not limited to the structural designs, drawings, specifications and calculations prepared by the structural engineer. DC's responsibility solely relates to the architectural information shown on these drawings.

Structural steel key:
 B1 200x100x3 RHS with 290x8 mm full length plate, welded to underside of bottom flange, bearing min. 200mm onto 600x100x215mm padstone each end. 50mmers 6mm thick welded at maximum 900mm centres
 SCL Standard cavity lintel
 SLL Standard single leaf lintel
 All to Structural Engineer's design, details and specification and must be read in conjunction with Structural Engineers drawings and calculations by 'Struct'



0 0.5 1 2.5
 Scale 1:50

REV	BY	DATE	DETAILS
F	MS	28.11.18	GF-frames added to internal block partitions; structural key updated; fire standing toilet replaced with concealed toilet; position of periscope vents near meter box adjusted
E	MS	02.11.18	Structural steel key added
D	MS	18.10.18	Key updated (extract fans)
C	GG	08.10.18	Amended RWP position, Gas & Electricity meters added, Steel locations added, Slab levels & External ground levels added, Drainage locations, CL and IL added, Entry locations for building services added
B	SM	10.08.18	Plans added
A	MS	10.07.18	Amended to reflect client's comments received on 02.07.18

architects
 architecture
 planning
 project management
 interior design
 graphics
 www.colesarchitects.co.uk

1 Cobbs Court, High Street, Olney, Buckinghamshire MK46 5QN
 t01234 241758 f01234 711459 u proactive@colesarchitects.co.uk

PROJECT:
 CHURCH LANE,
 ASTON CLINTON

DRAWING TITLE:
 PROPOSED GARAGE ROOF PLAN

SCALE: 1:50 **DATE:** Oct 18 **BY:** SM

ISSUE STATUS:
 DESIGN B of Q CONSTRUCTION RECORD

CHECKED BY: **DATE:**

DRAWING NO.: 16006 (2)-1020 **REVISION:** F