

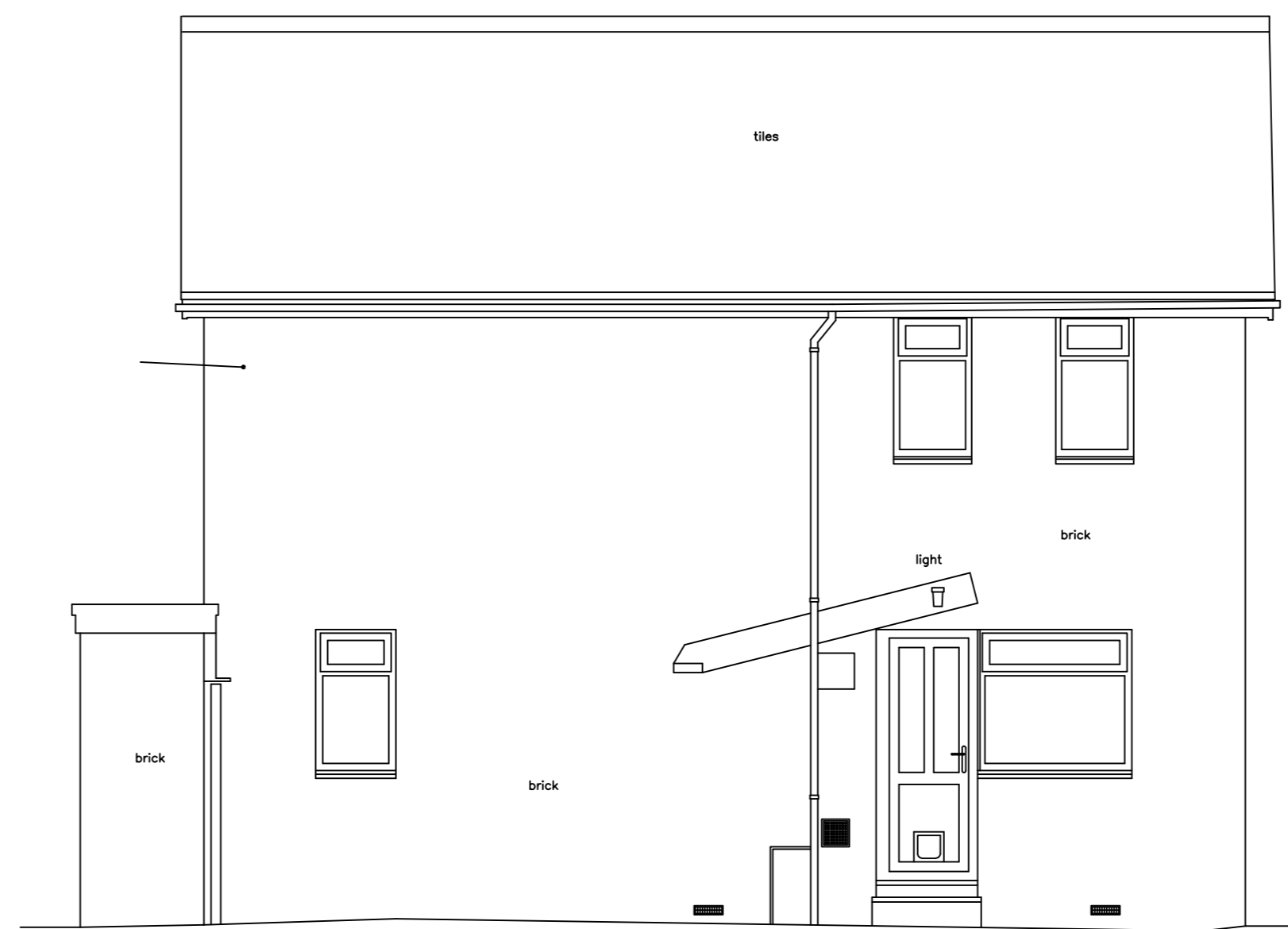
Datum 0.00m

SOUTH ELEVATION



Datum 0.00m

WEST ELEVATION



Datum 0.00m

NORTH ELEVATION

**NOTES**

**GENERAL NOTES :-**

ALL LEVELS ARE IN METRES DERIVED FROM OPS TRANSFORMATION.  
THIS DRAWING HAS BEEN PRODUCED WITH A PLOT SCALE ACCURACY OF 1:50

**BUILDING SURVEY KEY :-**

- |                           |                                   |
|---------------------------|-----------------------------------|
| ⊘ - room height           | hwt - hot water tank              |
| ⊘ - floor boards          | ic - inspection cover             |
| ⊘ - pipe diameter         | mh - manhole cover                |
| ⊘/b - air brick           | OSBM - Ordnance Survey bench mark |
| ab - alarm box            | q/dies - quarry tiles             |
| ah - arch head            | rad - radiator                    |
| bd - back drop            | rl - roof light                   |
| bk - brick                | rw - rain water pipe              |
| conc - concrete           | sfc - soil filled chamber         |
| cr - cable riser          | sh - floor to sill height         |
| db - fuse box             | sp - arch springing point         |
| dh - door height          | spc - soil pipe                   |
| dp - depth                | ssc - suspended ceiling           |
| q/mtr - electricity metre | svp - soil vent pipe              |
| elec - electricity        | Lrnl - heated towel rail          |
| f/p - fire place          | tl - threshold level              |
| fh - floor to head height | toc - top of cap                  |
| fl - floor level          | top - top of pipe                 |
| fs - floor to sill height | tot - top of tank                 |
| g/mtr - gas metre         | u/s - underside height            |
| gr - gas riser            | U/L - unable to lift              |
| hd - hand dryer           | vp - vent pipe                    |
| hr - heater               | wf - water fountain               |
|                           | wfc - water filled chamber        |
|                           | wp - waste pipe                   |

**SERVICES KEY :-**

- |    |                                |      |                          |
|----|--------------------------------|------|--------------------------|
| —  | strip light                    | AK   | alarm keypad             |
| ⊗  | light                          | IK   | intercom                 |
| ⊗  | wall light                     | ACP  | alarm control panel      |
| ⊗  | emergency light                | SPK  | speaker                  |
| ●  | spot light                     | PRJ  | projector                |
| ○  | pull cord                      | CCTV | closed circuit tv        |
| ⊞  | vent/extractor                 | S    | sensor                   |
| L  | switch                         | NC   | network point            |
| LS | light switch                   | TV   | coaxial aerial           |
| FS | fused switch                   | S    | smoke detector           |
| IS | isolator switch                | ⊗    | heat detector            |
| CS | cooker switch                  | L    | fire alarm siren         |
| C  | fuse                           | FA   | fire alarm siren         |
| F  | blank socket                   | L    | fire breakglass          |
| S  | single socket                  | +    | fire sprinkler           |
| DS | double socket                  | ⊞    | fire blanket             |
| CS | ceiling socket/fuse/switch     | ⊞    | water fire extinguisher  |
| T  | thermostat                     | ⊞    | CO2 fire extinguisher    |
| CA | card access point (swipe card) | ⊞    | powder fire extinguisher |
| L  | emergency door release         | ⊞    | fire extinguisher        |
| DR |                                | FAP  | fire alarm control panel |

**NORTH POINT :-**

**SHEET LAYOUT :-**



**MIDLAND SURVEY LTD**

HEAD OFFICE  
Cromwell House, Westfield Road, Southam, Warwickshire, CV47 0JH.  
Tel: 01926 810811 Fax 01926 810812  
E-Mail: [moli@midlandsurvey.co.uk](mailto:moli@midlandsurvey.co.uk)  
[www.midlandsurvey.co.uk](http://www.midlandsurvey.co.uk)

Client RANDELL DESIGN GROUP

Project 18 FAIRFIELD ROAD, BOSHAM, PO18 8JH

Title ELEVATIONS

Date SEPTEMBER 2023 Revisions

Scale 1:50@A1

Dwg No 102646 - 7

Surveyor M.G

Checked L.G

TOPOGRAPHICAL (LAND) SURVEYORS / UTILITY SURVEYORS  
BUILDING MEASUREMENT SURVEYORS / 3D LASER SCANNING



© Copyright Midland Survey Ltd. Reproduction of this information is prohibited without written authorisation from Midland Survey Ltd.