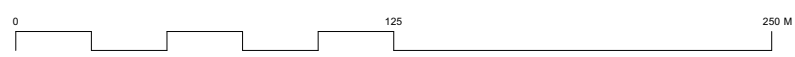
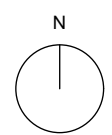


This drawing is the copyright of Axiom Architects. It is for planning application purposes only and may not be reproduced in whole or in part without permission. Drawings lodged for planning approval may be reproduced by the Planning Authority in accordance with the Copyright (Material Open to Public Inspection) (Marking of Copies of Plans and Drawings) Order 1990 and must carry the relevant copyright restriction note. Scaling from this drawing should only be carried out from a print at the scale and size specified within the title block. Responsibility for ensuring correct size reproduction remains with the reader.



**Client**  
Whitbread Plc

1 Brooklands Yard  
Southover High Street  
Lewes  
East Sussex BN7 1HU  
01273 479434  
www.axiomarchitects.co.uk

**AXIOM**  
ARCHITECTS

**Project**  
Premier Inn  
Bognor Road  
Chichester

**Drawing**  
Site Location Plan as Proposed

Rev	Date	Description	By	Chk
F	26/03/2024	Parking layout updated.	LB	LB
E	22/03/2024	Blue line updated. Proposed tree positions amended.	LB	LB
D	20/03/2024	Parking bay changes	AK	LB

Drawing No.	Revision	Date	Scale	Drawn	Checked	Status
4011-P-002	F	21/02/24	1:2500 @ A3	AK	LB	PLANNING