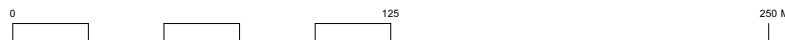
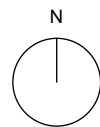


This drawing is the copyright of Axiom Architects. It is for planning application purposes only and may not be reproduced in whole or in part without permission. Drawings lodged for planning approval may be reproduced by the Planning Authority in accordance with the Copyright (Material Open to Public Inspection) (Marking of Copies of Plans and Drawings) Order 1990 and must carry the relevant copyright restriction note. Scaling from this drawing should only be carried out from a print at the scale and size specified within the title block. Responsibility for ensuring correct size reproduction remains with the reader.



E	26/03/2024	Minor adjustment to red line.	LB	LB
D	22/03/2024	Blue line updated.	LB	LB
C	18/03/2024	Updated scale and page to A3	AK	LB

Rev	Date	Description	By	Chk
-----	------	-------------	----	-----

Client  
**Whitbread Plc**

1 Brooklands Yard  
Southover High Street  
Lewes  
East Sussex BN7 1HU  
01273 479434  
www.axiomarchitects.co.uk

**AXIOM**  
ARCHITECTS

Project  
**Premier Inn  
Bognor Road  
Chichester**

Drawing  
**Site Location Plan as Existing**

Drawing No.	Revision	Date	Scale	Drawn	Checked	Status
4011-P-001	E	21/02/24	1:2500 @ A3	AK	LB	PLANNING