

Schedule

Trees Planting

| No. | Species Name | Specification | Density | Height |
|----------|--------------------------------|---|---------|----------|
| 7 | Acer campestre 'Elsrijk' | Standard :Clear Stem min. 200 :3/5 brks :RB | Counted | 2.5-3.0m |
| 1 | Pyrus calleryana 'Chanticleer' | Standard :Clear Stem min. 200 :3/5 brks :RB | Counted | 2.5-3.0m |
| 1 | Quercus robur | Heavy Standard :Clear Stem min. 200 :3/5 brks :RB | Counted | 3.0-3.5m |
| Total :9 | | | | |

Hedge Planting

| No. | Species Name | Specification | Density | Height |
|------------|--------------------|--|---------|----------|
| 86 | Acer campestre | 1+2 :Transplant :4 brks :BR 0.3Ctr Double Staggered at 0m offset | | 80-100cm |
| 43 | Cornus sanguinea | 1+2 :Transplant :4 brks :BR 0.3Ctr Double Staggered at 0m offset | | 80-100cm |
| 172 | Crataegus monogyna | 1+2 :Transplant :4 brks :BR 0.3Ctr Double Staggered at 0m offset | | 80-100cm |
| 86 | Prunus spinosa | 1+2 :Transplant :4 brks :BR 0.3Ctr Double Staggered at 0m offset | | 80-100cm |
| 43 | Rosa 'Carina' | 1+2 :Transplant :4 brks :BR 0.3Ctr Double Staggered at 0m offset | | 80-100cm |
| Total :430 | | | | |

Shrubs

| No. | Species Name | Specification | Density | Pot Size | Height |
|------------|-----------------------------------|-----------------------|------------------|----------|---------|
| 87 | Hebe 'Pewter Dome' | Bushy :5 brks :C | 7/m ² | 2L | 10-20cm |
| 38 | Hebe pinguifolia 'Pagei' | Branched :3/5 brks :C | 3/m ² | 5L | 20-30cm |
| 35 | Lonicera purpusii | Bushy :5 brks :C | 3/m ² | 5L | 30-40cm |
| 35 | Prunus laurocerasus 'Otto Luyken' | Branched :3/5 brks :C | 3/m ² | 3L | 40-60cm |
| 69 | Sarcococca confusa | Bushy :5/7 brks :C | 3/m ² | 3L | 30-40cm |
| 38 | Skimmia japonica 'Rubella' | Bushy :5/7 brks :C | 3/m ² | 3L | 30-40cm |
| 38 | Viburnum opulus | Bushy :5/7 brks :C | 3/m ² | 3L | 30-40cm |
| Total :340 | | | | | |

Herbaceous

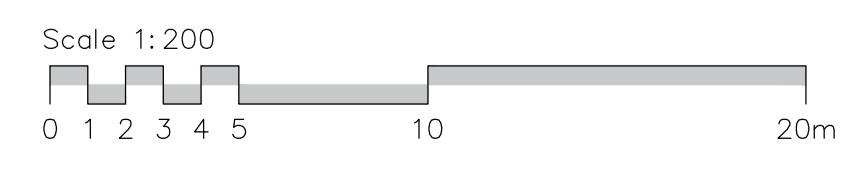
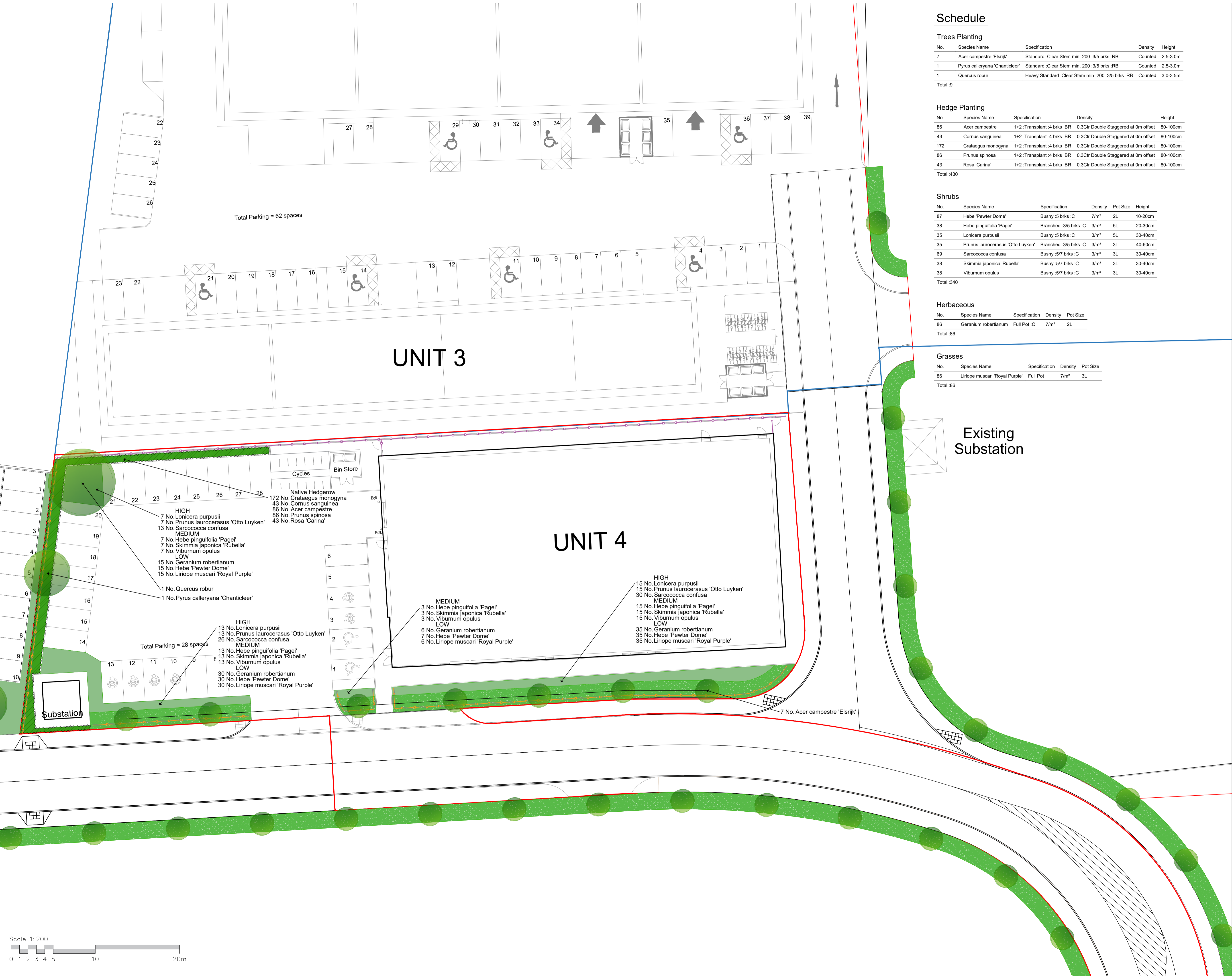
| No. | Species Name | Specification | Density | Pot Size |
|-----------|----------------------|---------------|------------------|----------|
| 86 | Geranium robertianum | Full Pot :C | 7/m ² | 2L |
| Total :86 | | | | |

Grasses

| No. | Species Name | Specification | Density | Pot Size |
|-----------|--------------------------------|---------------|------------------|----------|
| 86 | Liriope muscari 'Royal Purple' | Full Pot :C | 7/m ² | 3L |
| Total :86 | | | | |

LANDSCAPE KEY

- SITE BOUNDARY
- OWNERSHIP BOUNDARY
- PROPOSED BUILDING LINE
- PROPOSED STREET TREE
- DECORATIVE SHRUB PLANTING
- AMENITY GRASS
- NATIVE HEDGEROW
- PROPOSED KNEE RAIL 600mm
- CLOSED BOARD TIMBER FENCE 2m



P02 / 26.03.2024 / Updated layout / JT
P01 Initial Issue
revision / date / description / drawn

St Anne's House
111 High Street
Lewes
East Sussex
BN7 1XY
T 01273 607807
W www.enplan.net

enplan

client
Hanbury Properties

project
Chichester Cathedral Park
RM6

scale
1:200

date
MARCH 2024

title
Planting Plan

drawing number
01-1047-308

revision
P02

issue
S3 - Suitable for Review & Comment

DO NOT SCALE FROM THIS DWG | DRAWING SUBJECT TO COPYRIGHT