

**Proposed Rooflight Location**

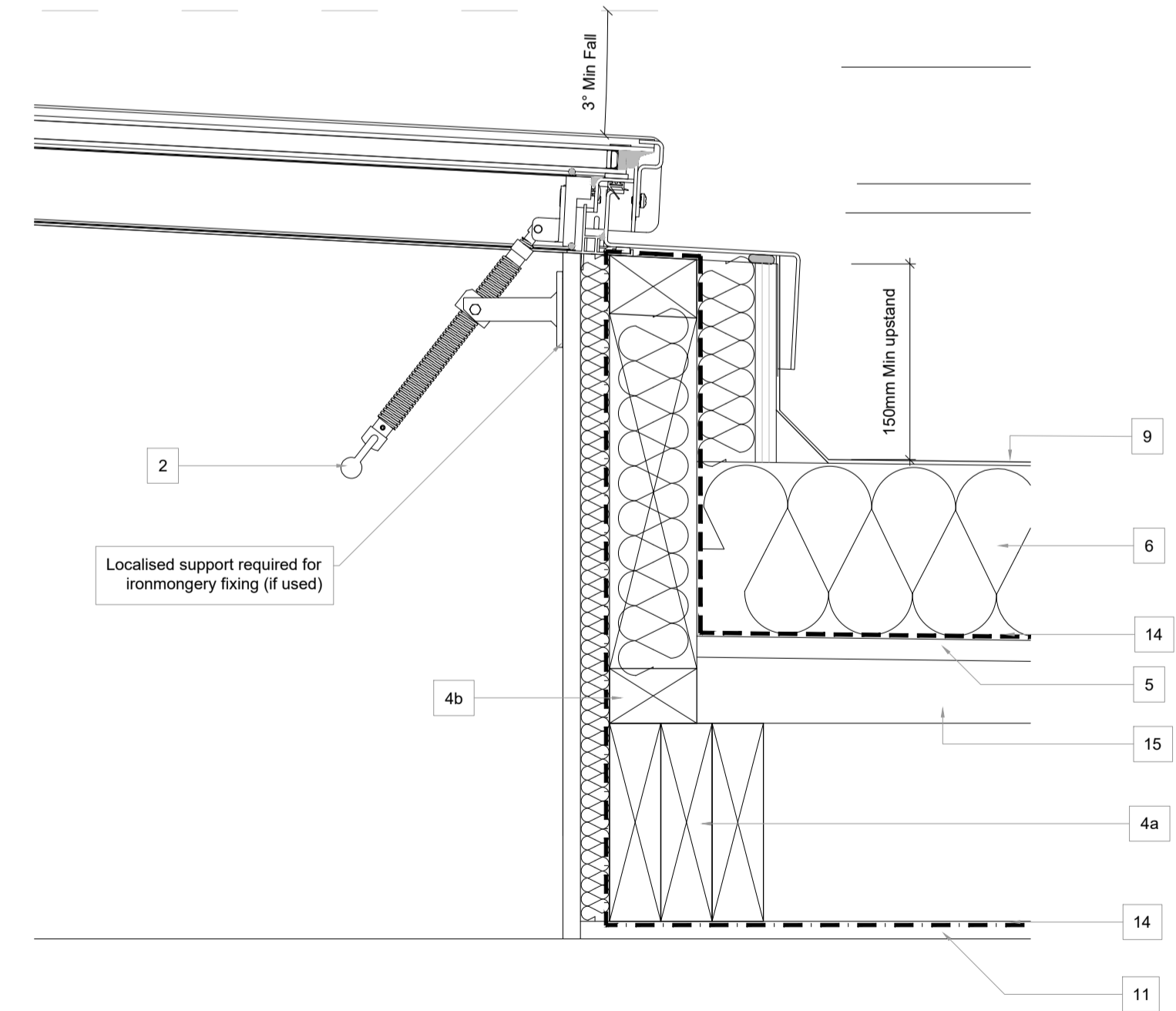
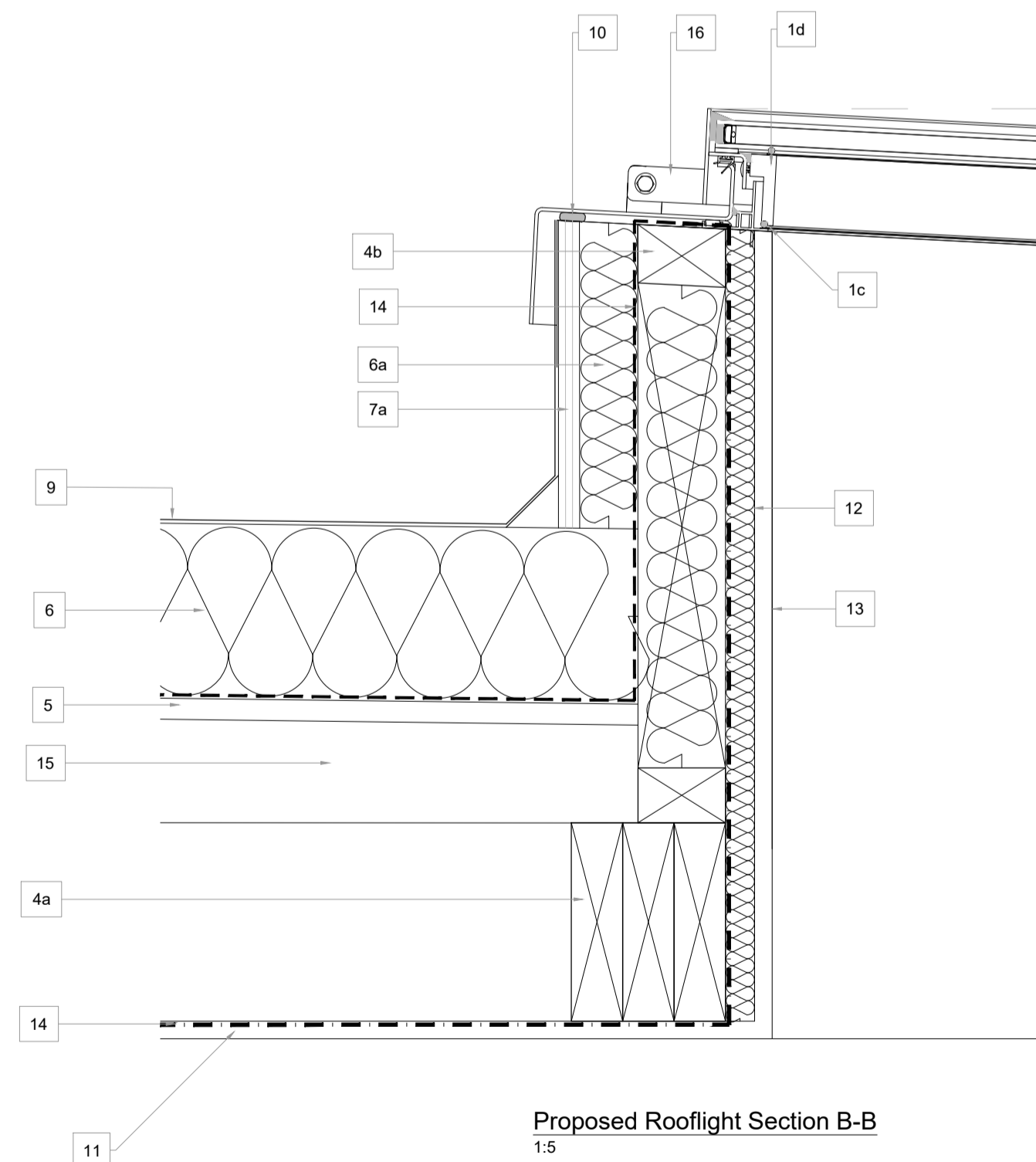
1:50

**Notes:**

The Rooflight Company, Conservation Plateau Rooflight supplied in bespoke overall size of 2325mm long x 1825mm wide, fitted with double glazed unit to provide overall u-value of 1.8w/m<sup>2</sup>K. External finish as standard: Semi-textured colour RAL 9005 - Jet Black. Rooflight to be fully installed in accordance with manufacturers instruction.

**Legend:**

1. The Conservation Rooflight, fixed to structural kerb(4a) by fixing lugs(1b) around perimeter of the rooflight with coach screws and washer fixings(3).
2. Manual winder or motorised opening operation.
3. M13x50 Coach screw with M10 washers.
4. Structural flat roof joists to Structural Engineer requirements forming the structural opening around rooflight(4a). Structural kerb(4b) formed using 75x50mm treated timbers on top framed together with min 3mm deg fall top to bottom.
5. 18mm Class3 exterior grade plywood flat roof deck.
6. 150mm PIR insulation to roofing felt manufacturers requirements laid on vapour barrier(14). 50mm PIR insulation fitted around external face of kerb(6a). Voids in kerb upstand to be fully filled with PIR insulation cut to tightly fit between timber framing.
7. 15mm Class3 exterior grade plywood continued up face of kerb (7a).
8. Angled fillet around perimeter of kerb where required by bituminous felt manufacturer.
9. 3 Layer high performance SBS modified elastomeric bitumen roofing system laid in accordance with manufacturers requirements with minimum 150mm up stand to all perimeters.
10. Perimeter low modulus neutral cure silicone seal, applied just prior to roof installation.
11. 12.5mm Plasterboard ceilings screw fixed with joints filled and taped ready for plaster skim finish.
12. 37.5mm Insulated plasterboard joints filled and taped.
13. Plaster skim finish applied to plasterboard, finish flush with rooflight timber lining(1d).
14. Vapour barrier sealed to Thermoliner and fixed to inside of kerb and underside of flat roof joists.
15. Treated Timber firing pieces to give 1:80 fall, twice fixed to each flat roof joist where crossing.
16. Exposed rooflight hinges.



Conservation Plateau Rooflight indicative image

**Proposed Extension and Alterations**  
At 42 King Street, Sandwich, Kent, CT13 9BL

**Proposed**  
The Conservation Plateau Rooflight Details

Project Name: Drawing Name:

A1  
Drawing No: A1612-58  
Revision: P1  
Date: Mar 24  
Scale: 1:50@A1  
Planning