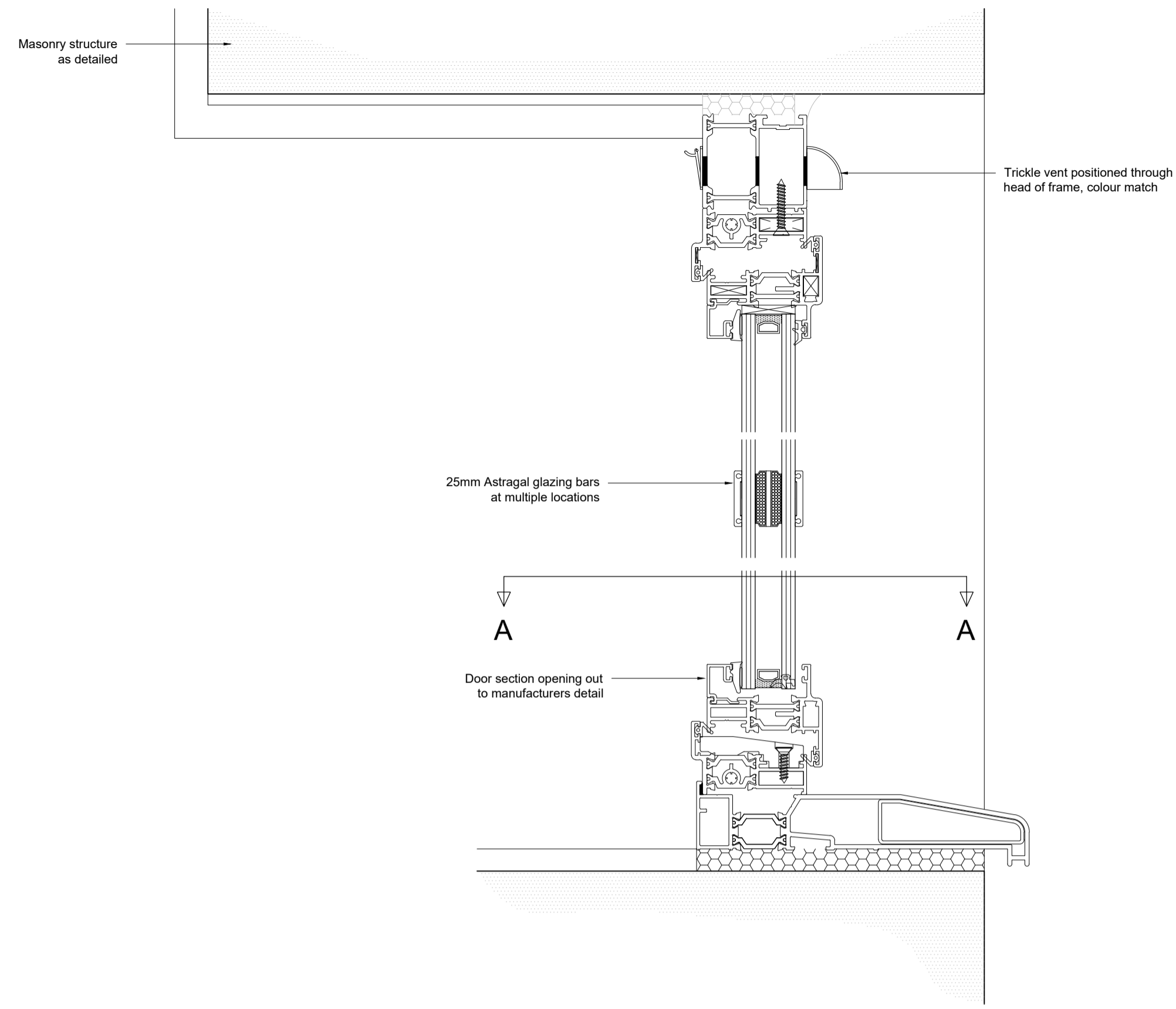
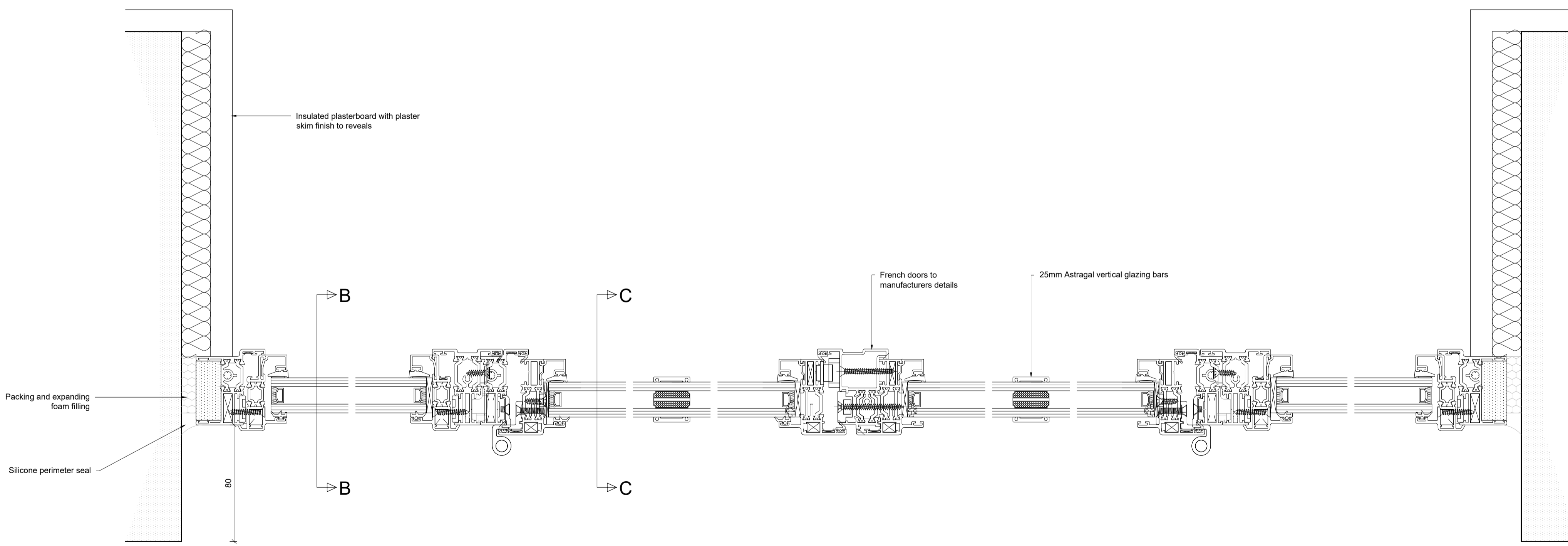


Glazed Side Screen - Section B-B



French Door - Section C-C



French Door & Side Screen - Cross Section A-A

ALITHERM HERITAGE DOOR & SIDE WINDOWS – PAS24-2016 PROFILE OPTION
Alitherm Heritage is designed for use as Single or French doors (not heavy duty) that are internally beaded. The system is suitable for applications such as listed building renovations or where a more traditional steel-look is required but with optimum thermal performance. Door leaves are hung on slimline butt hinges and incorporate a multi-point locking system with latch and deadbolt. Operation is via a lift-lever handle and deadlocked via a euro profile cylinder.
Internal beads and gaskets will accommodate 24 & 28mm units.
Thermal breaks are formed with polyamide strips PA 6.6 25 reinforced with glass fibre, fitted between aluminium extrusions. All profiles are extruded from aluminium alloy 6060/6063 T5/T6 and comply with the recommendations of BS EN 12020-2; 2001/BS 755-9:2001. Profiles can be Electrostatic powder coat finished in a range of RAL colours to APA Qualicoat guidelines with the option of Bi-colour, different internal and external colours. Other finishes include anodised in satin with EWAA/EURAS-Qualanod quality label. Doors are manufactured according to customer requirements from a range of standard profiles and to include astragal glazing bars in 25mm widths.

Manufacturer: Smart Systems Ltd, Arnolds Way, Yatton, North Somerset BS49 4QN.
Tel: 01934 876100.
Email: sales@smartsystems.co.uk Web: www.smartsystems.co.uk

Product reference: Alitherm Heritage Doors – PAS24-2016 Profile Options.

Materials: All profiles are extruded from aluminium alloy 6060/6063 T5/T6 and comply with the recommendations of BS EN 12020-2; 2001/BS 755-9:2001. Thermal breaks are formed with polyamide strips PA 6.6 25 reinforced with glass fibre sections capable of withstanding temperatures up to 200°C for over painting.

Finish as Delivered: Polyester Powder coated
Internal Colour: RAL 9005 Jet Black. External Colour: RAL 9005 Jet Black.

Glazing details: Glazing shall be site glazed as section L40. Doors shall be double glazed and internally beaded. Unit thickness - Overall thickness of 24 or 28mm. Hermetically sealed units to have argon filled cavities and Warm edge spacer bar. The sealed units are to have a centre pane U value no greater than 1.0W/m²K. All doors to be dry glazed using shuffle extruded aluminium beads and EPDM extruded gaskets.

All glass units to meet the requirements of BS EN12600: 2002 Glass in building and BS EN 1279: Glass in Buildings. Insulating Glass Units. Recommendations of the Glass and Glazing Federation to be adhered to.

Ironmongery / Accessories: All ironmongery requirements to be confirmed by manufacturer and client prior to fabrication.

Trickle Ventilators: Supply and install window manufacturers recommended manually operated Hit and Miss trickle ventilator, with insect guard, fitted through door head frame with inner and outer unit, colour matched to door frame. Number per door as stated.



Precedent Image
NTS



date	note
21.03.24	P1 - Issue to client for comment
-	-
-	-
-	-
-	-