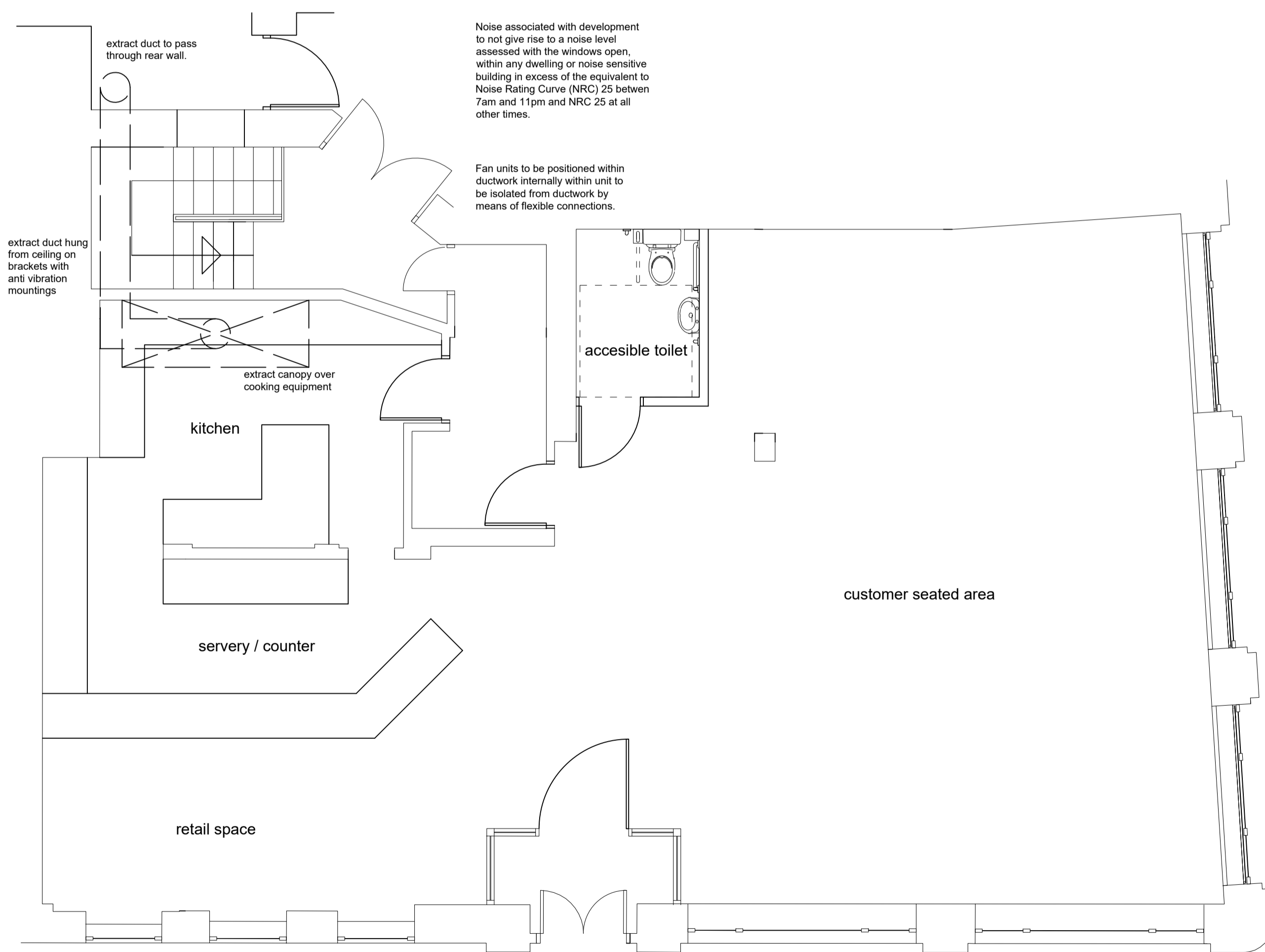
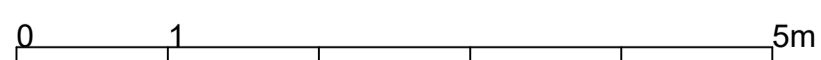


basement floor as proposed



ground floor as proposed



Noise associated with development to not give rise to a noise level assessed with the windows open, within any dwelling or noise sensitive building in excess of the equivalent to Noise Rating Curve (NRC) 25 between 7am and 11pm and NRC 25 at all other times.

Fan units to be positioned within ductwork internally within unit to be isolated from ductwork by means of flexible connections.

Proposals at  
236 Albert Drive  
Glasgow  
G41 2NL

scale 1:50 (A2)  
dwg no. 32028/3