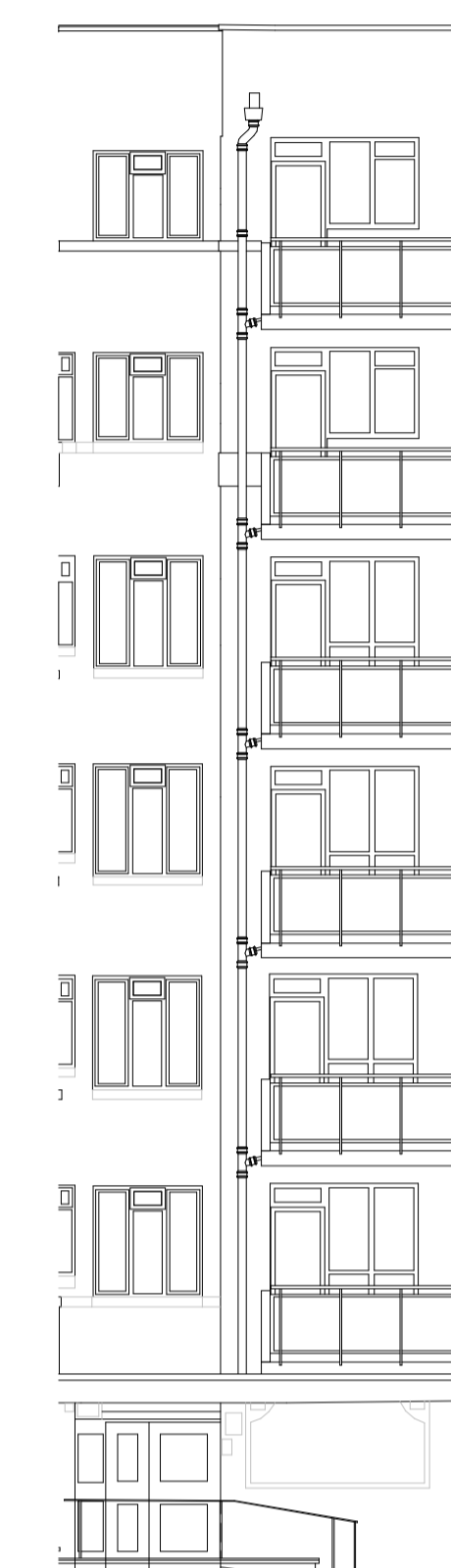
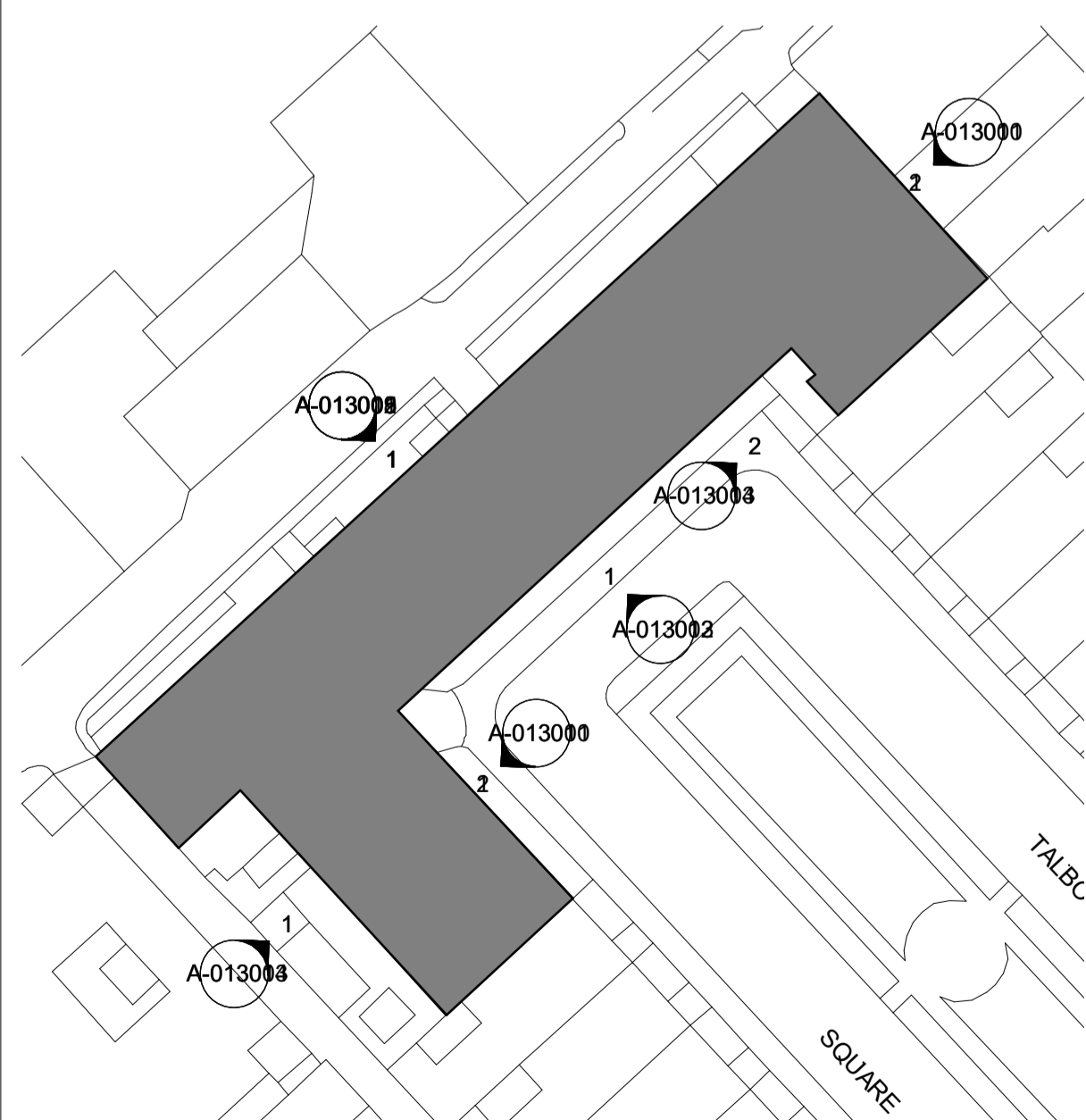




SOUTH WEST
1:100



SOUTH WEST SECTIONAL ELEVATION
1:100



Do not scale this drawing
Do not derive dimensions from digital media

Rev	Date	Revision Notes	Drawn By	Checked By	Rev	Date	Revision Notes	Drawn By	Checked By	Rev	Date	Revision Notes	Drawn By	Checked By	Drawing Status:	Suitability:	Drawing No:	Rev:
P1	14/10/22	FIRST ISSUE	GH	AA											PLANNING	S2	CVP-FBA-XX-XX-DR-A-013004	P6
P2	09/12/22	TENDER ISSUE	GH	AA											CITI VIEW @ PADDINGTON	3995	© Drawing & Design Copyright of:	FAULKNERBROWNS ARCHITECTS FaulknerBrowns LLP 20000 House Northumbrian Way Kingsworth Newcastle upon Tyne NE12 6DW T+44(0)191 2683007 F+44(0)191 2478132
P3	06/01/23	PLANNING ISSUE	GH	AA														
P4	20/01/23	PLANNING ISSUE	GH	AA														
P5	02/11/23	REVISED PLANNING APPLICATION	GH	JC														
P6	01/03/24	ISSUED FOR PLANNING	GH	JC										SOUTH WEST ELEVATION AS EXISTING Date: OCT 2022 Scale: As indicated Drawn By: GH Checked By: AA				