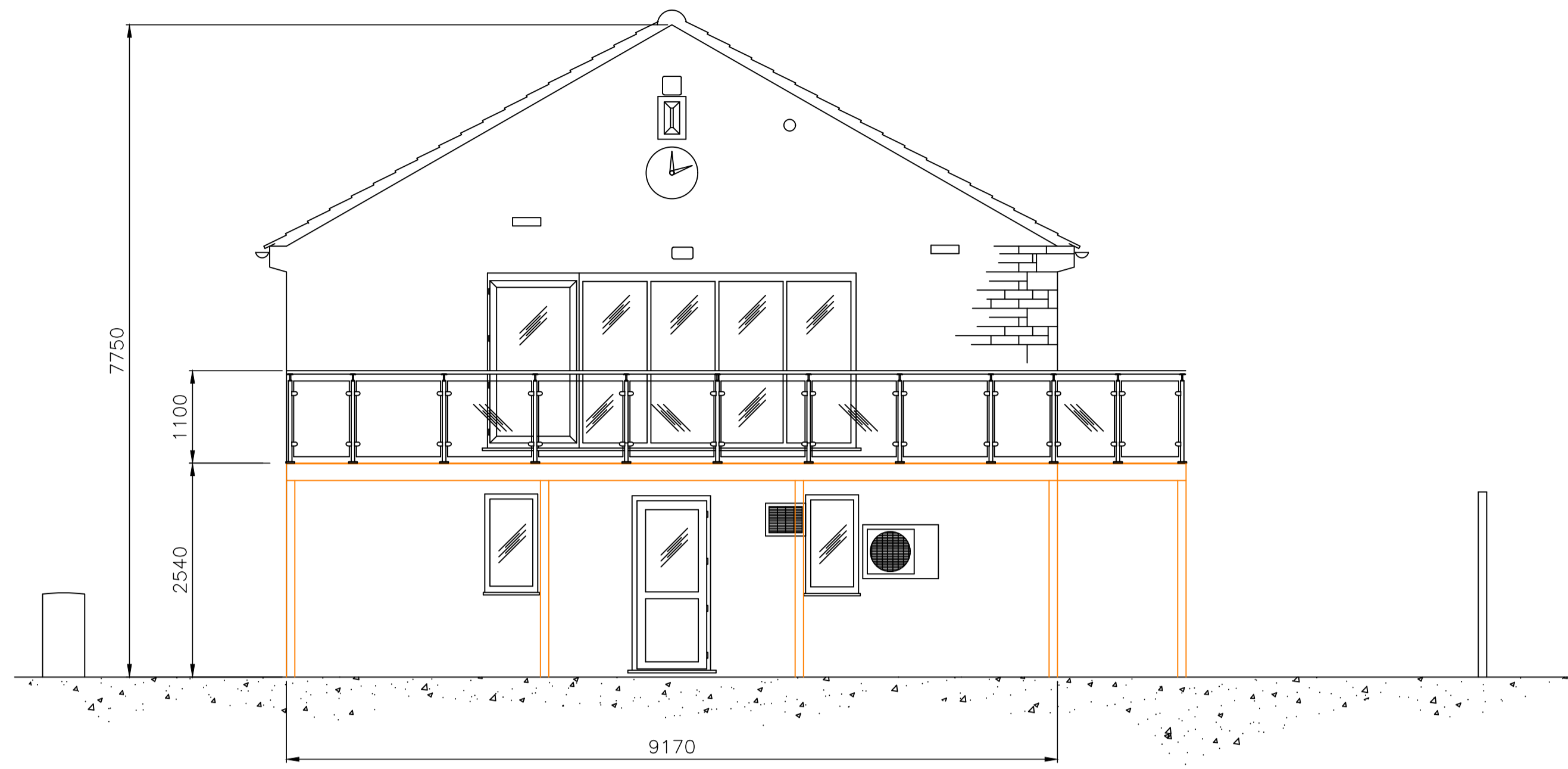
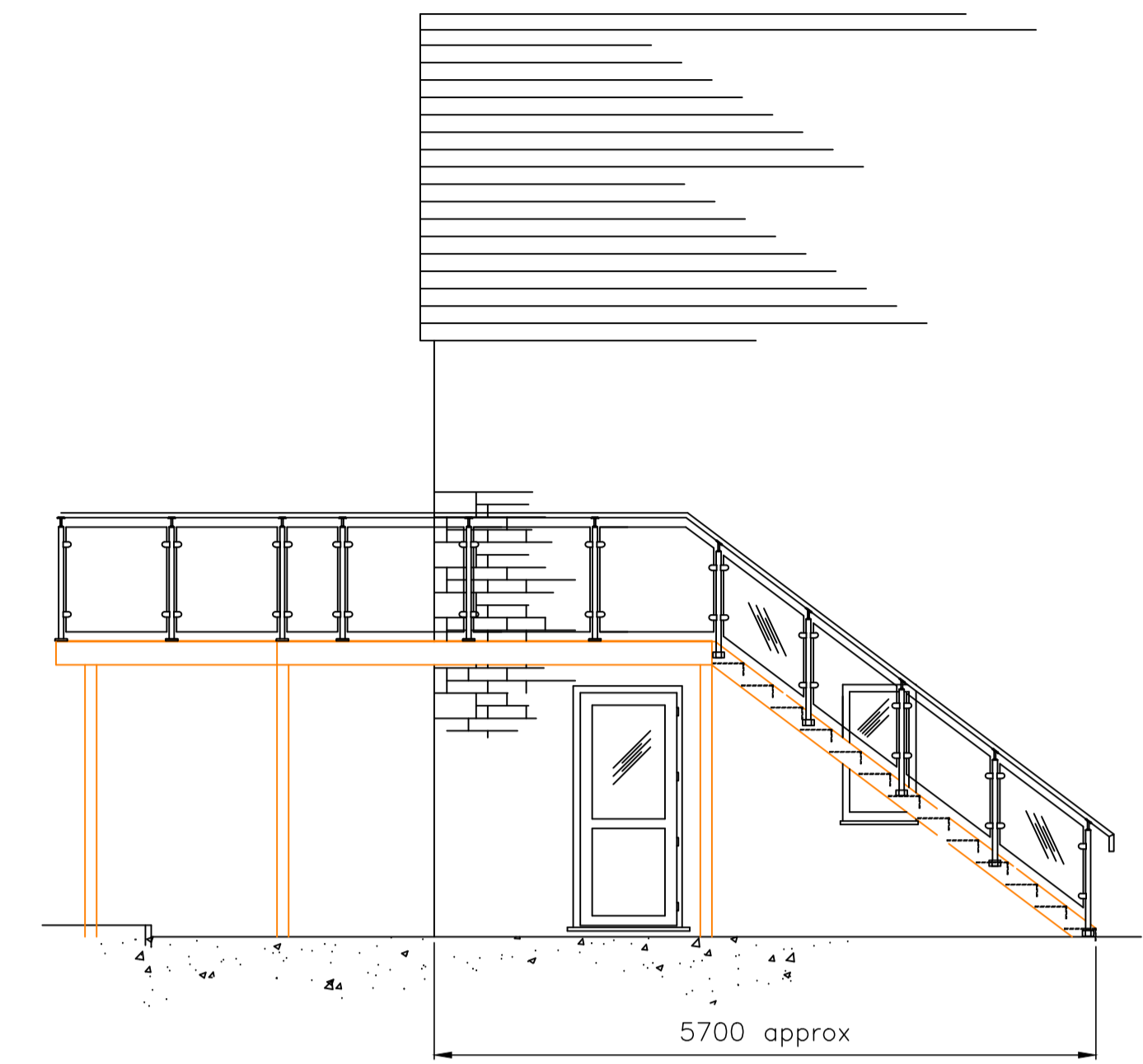


WEST ELEVATION



SOUTH ELEVATION



EAST ELEVATION

CONSTRUCTION

BALCONY

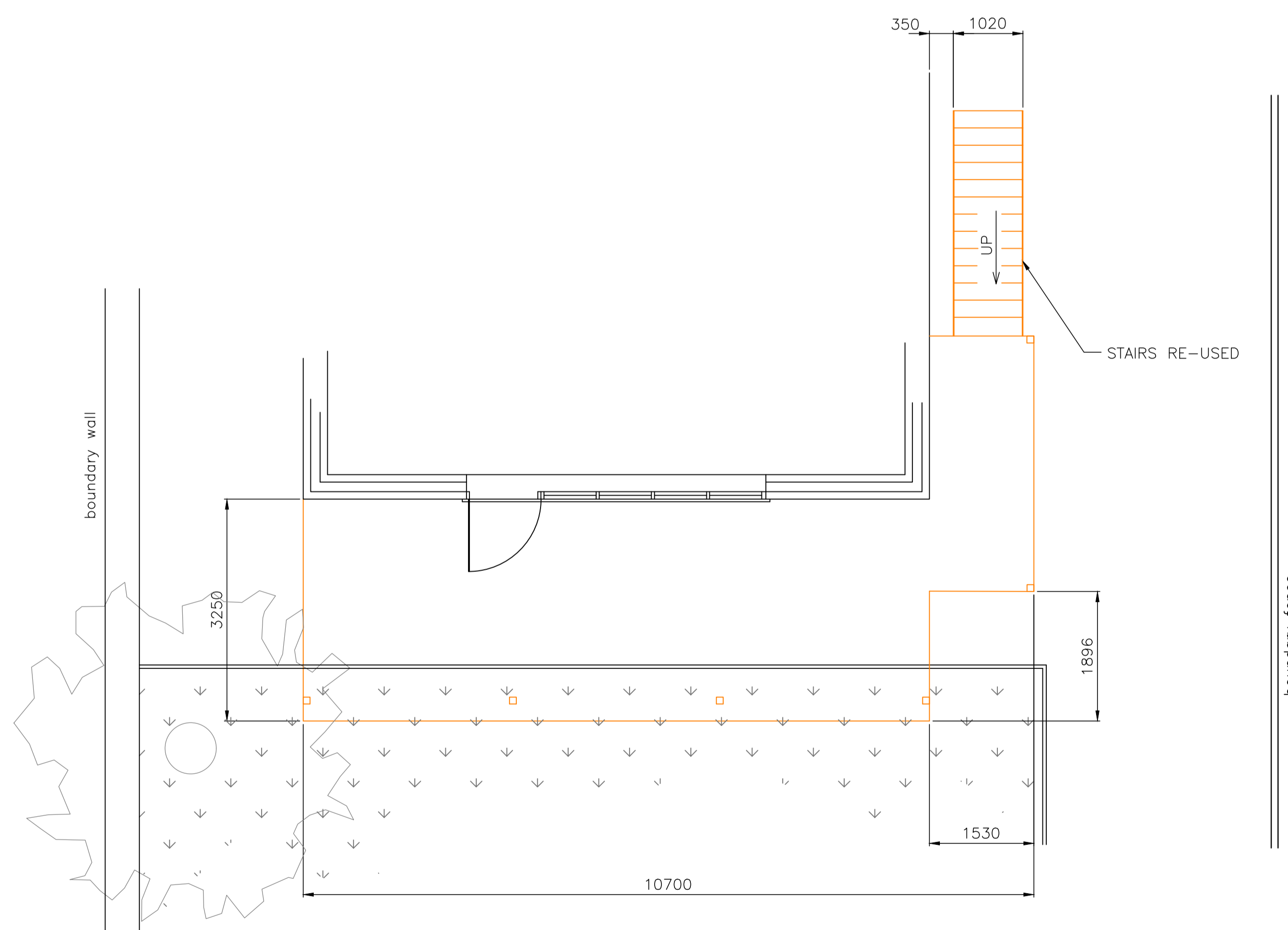
CONSTRUCTED IN STEEL, 200x75PFC PAINTED BLACK UNDER FLOORING RECESSED INTO WALL WITH GRP NON SLIP FLOORING.

HANDRAILS

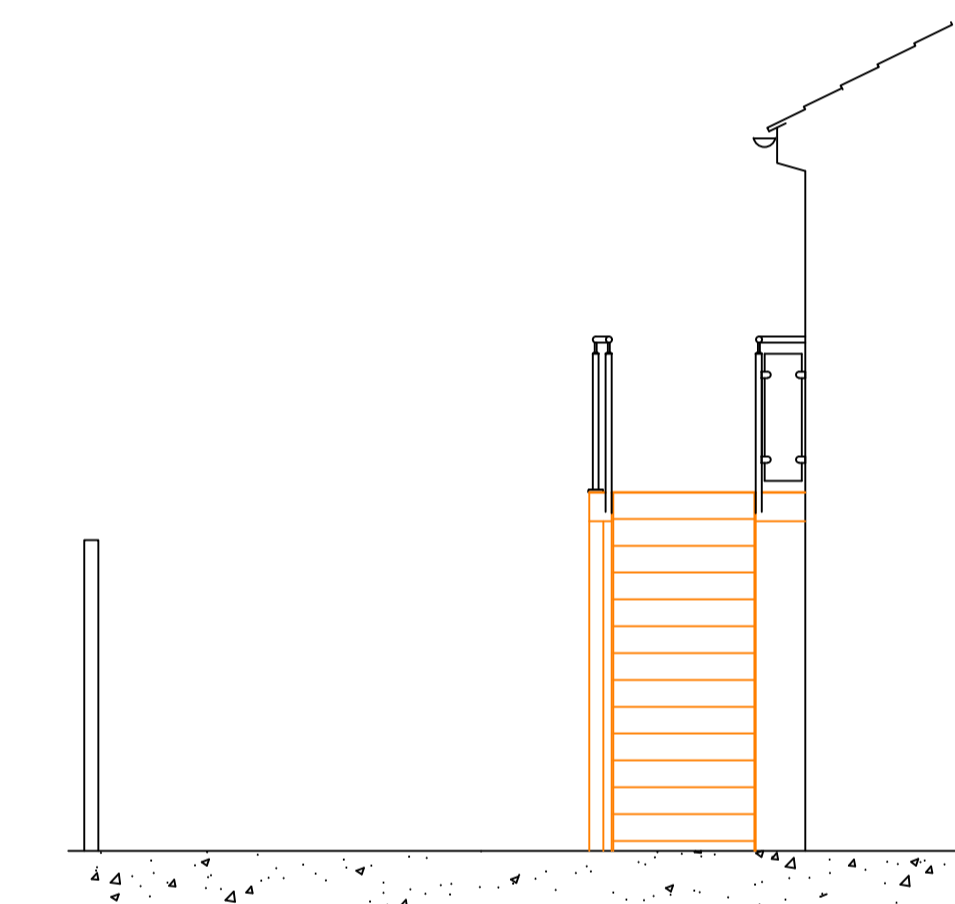
10mm CLEAR FLOAT TOUGHENED GLASS WITH MGC LOGO HANDRAIL STANDARDS AND HANDRAIL PAINTED BLACK.

STAIRS

CONSTRUCTED IN STEEL 180x10THK STRINGERS, 6THK DURBAR TREAD (CHEQUERED PLATE) AND HANDRAILS PAINTED BLACK (EXISTING STAIRS REUSED).



PLAN ON GROUND & FIRST FLOOR LEVEL



NORTH ELEVATION

D	NORTH ELEVATION ADDED	25.04.24	PAP
C	LENGTH OF BALCONY REDUCED	06.03.24	PAP
B	SUPPORT LEGS RE-POSITIONED	01.12.23	PAP
A	WIDTH AND LENGTH OF PLATFORM INCREASED FROM 3000/1050, FLOORING MATERIAL CHANGED WAS DURBAR HANDRAILS CHANGED TO PAINTED BLACK.	30.11.23	PAP
#	ORIGINAL ISSUE	27.10.23	PAP

REV	DESCRIPTION	DATE	DRN
-----	-------------	------	-----

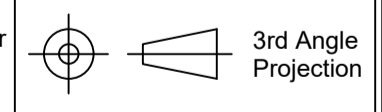
de Havilland
engineering group

8 Stonehouse Commercial Centre, Bristol Road, Stonehouse, Gloucestershire GL10 3RD

FABRICATION ENGINEERING WATER UTILITIES

GENERAL DRAWING NOTES - Do Not Scale - if in doubt, ASK

Drawing Rev (#) denotes 1st
Up-revised versions noted with letter (A,B etc) and dated in REV section.
All dimensions shown in MM



GENERAL TOLERANCES (UOS)	
PIPE, SHEET & STRUCTURAL	
UP TO & INC 1 METRE	±2mm
FROM 1 TO 2 METRES	±3mm
FROM 2 TO 3 METRES	±4mm
OVER 3 METRES	±5mm
ANGULAR	±0.5°
HOLE CENTRES	±2mm
MACHINING	
LINEAR	±0.25mm
ANGULAR	±0.5°
HOLE POSITION	±0.5mm
RADIUS INTERNAL CORNERS	R0.5mm
SURFACE FINISH	3.2µm

Project :			
NEW FIRST LEVEL BALCONY AND ACCESS			
Drawing : PROPOSED ELEVATIONS AND PLANS			
GLASS INFILL STAINLESS STEEL HANDRAILS			
Client :			
MINCHINHAMPTON GLOF CLUB, OLD COURSE			
Approved :	Date :	Scale :	Sheet Size :
-	-	1:50	A1
Drawn :	Date :	Checked :	Date :
PAP(CJS)	27.10.23	MAS	
Project no. :	Drawing no. :	Issue status :	Rev :
4773	A-005	FOR PLANNING	D