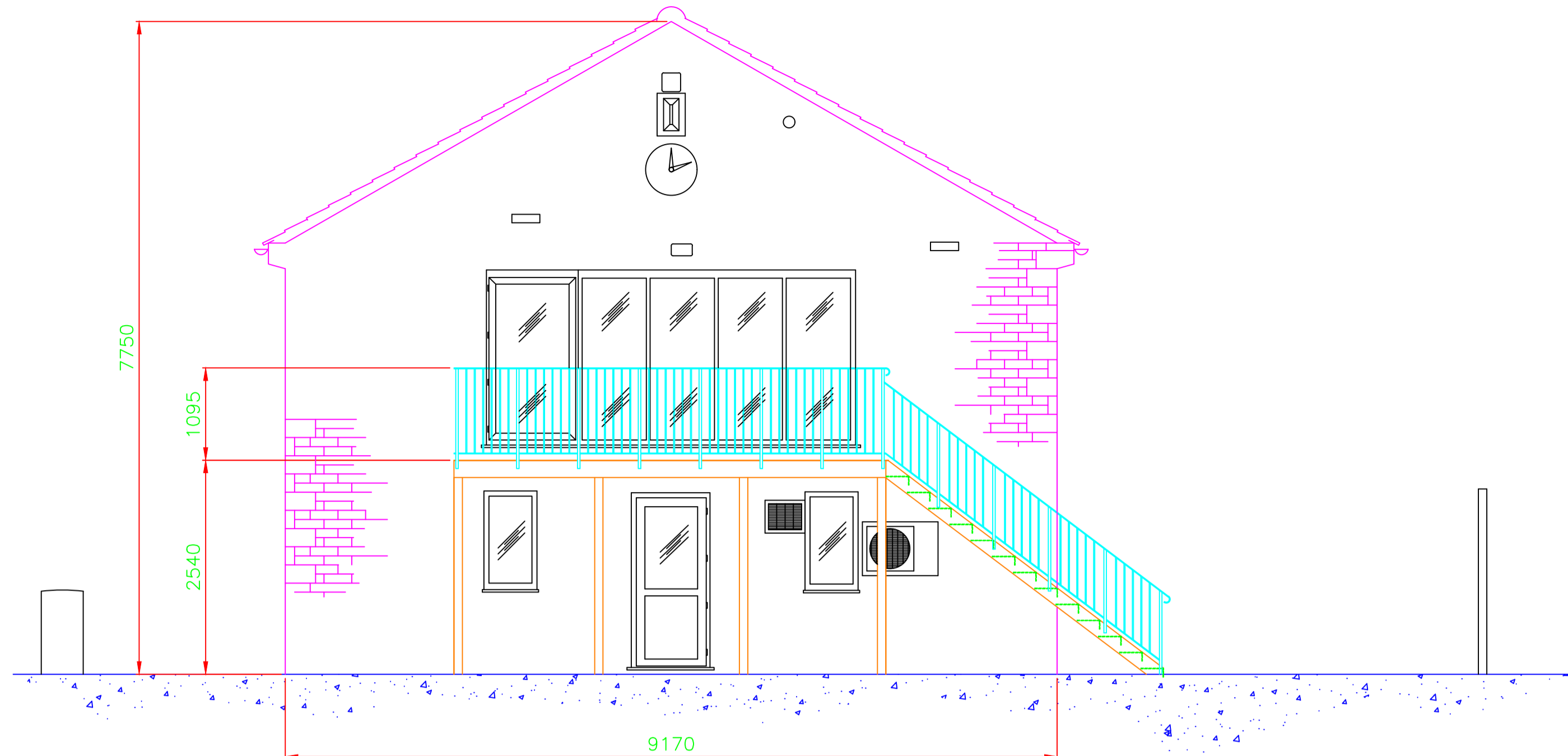


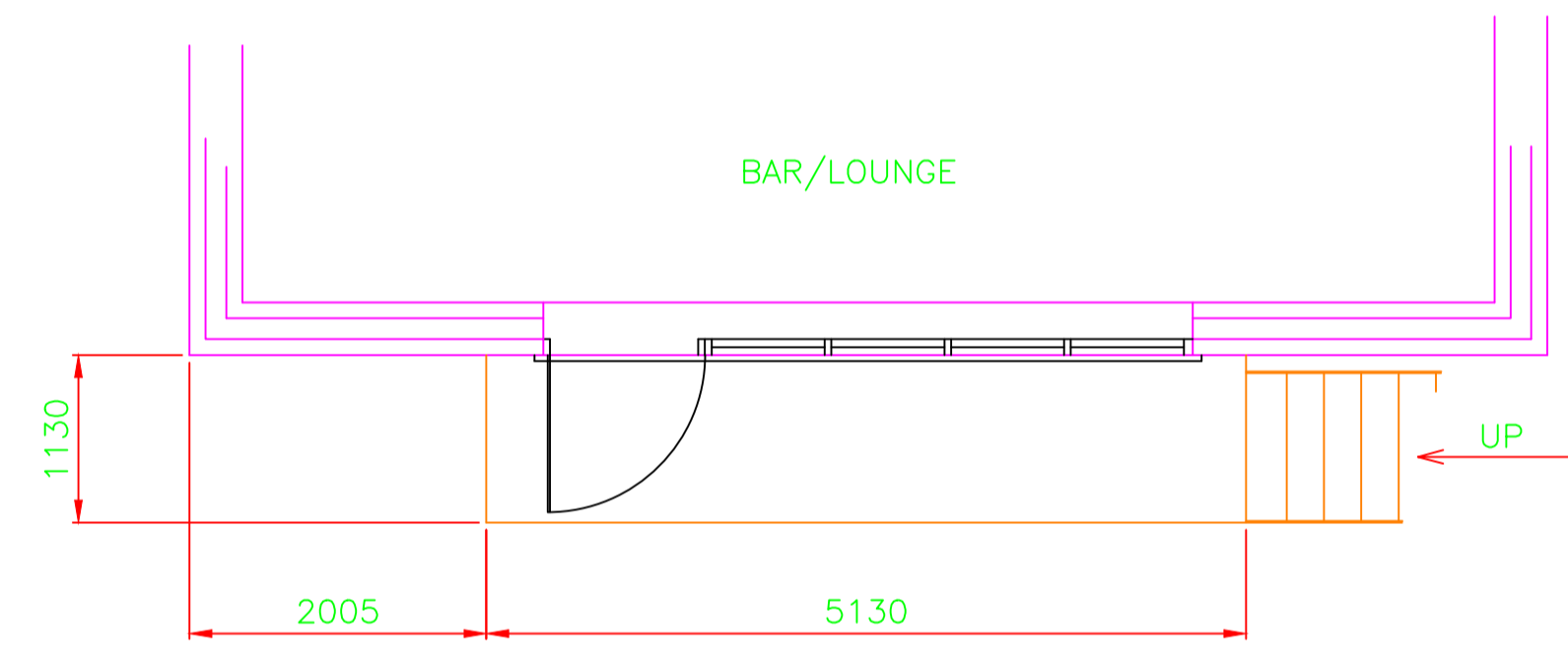
WEST ELEVATION



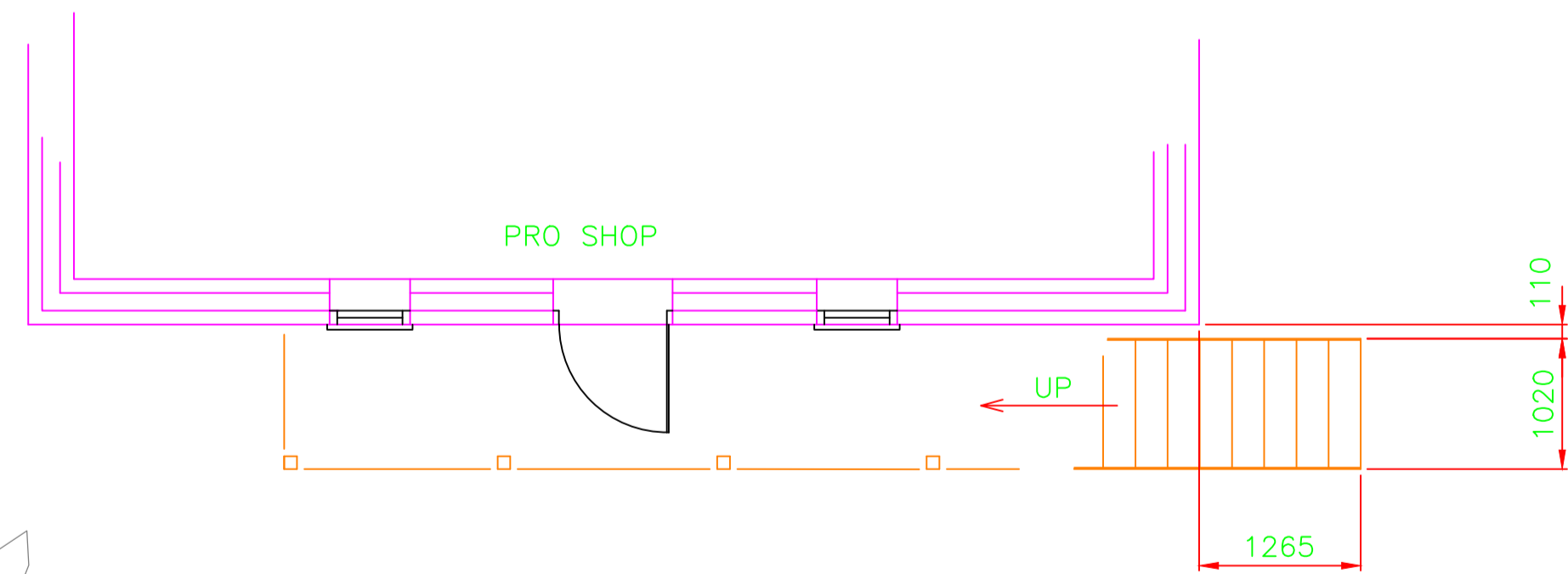
SOUTH ELEVATION



EAST ELEVATION



PLAN ON FIRST FLOOR LEVEL



PLAN ON GROUND FLOOR LEVEL



CONSTRUCTION

PLATFORM

CONSTRUCTED IN STEEL, 200x75RSC UNDER FLOORING RECESSED INTO WALL WITH 6THK DURBAR FLOORING (CHEQUERED PLATE) ALL PAINTED BLACK.

HANDRAILS

CONSTRUCTED IN STEEL, 38x13 SQUARE EDGE CONVEX TOP RAIL WITH 30SQ BAR STANDARDS & Ø12 INFILL ALL PAINTED IN BLACK.

STAIRS

CONSTRUCTED IN STEEL 180x10THK STRINGERS, 6THK DURBAR TREAD (CHEQUERED PLATE) AND HANDRAILS AS ABOVE.

GENERAL TOLERANCES (UOS)	
PIPE, SHEET & STRUCTURAL	
UP TO & INC 1 METRE	±2mm
FROM 1 TO 2 METRES	±3mm
FROM 2 TO 3 METRES	±4mm
OVER 3 METRES	±5mm
ANGULAR	±0.5°
HOLE CENTRES	±2mm
MACHINING	
LINEAR	±0.25mm
ANGULAR	±0.5°
HOLE POSITION	Ø0.5mm
RADIUS INTERNAL CORNERS	R0.5mm
SURFACE FINISH	3.2µm

#	ORIGINAL ISSUE	17.10.23	PAP
REV	DESCRIPTION	DATE	DRN

**de Havilland**  
engineering group  
W : www.dehavilland.co.uk

5 Stonehouse Commercial Centre, Bristol Road, Stonehouse, Glouce GL10 3RD

FABRICATION	ENGINEERING	WATER	UTILITIES
-------------	-------------	-------	-----------

GENERAL DRAWING NOTES - Do Not Scale - if in doubt, ASK

Drawing Rev (#) denotes 1st  
Up-revised versions noted with letter (A,B etc) and dated in REV section.  
All dimensions shown in MM

Project :  
**NEW FIRST LEVEL PLATFORM AND ACCESS**

Drawing :  
**EXISTING ELEVATIONS AND PLANS**

Client :  
**MINCHINHAMPTON GLOF CLUB, OLD COURSE**

Approved :	Date :	Scale :	Sheet Size :
-	-	1:50	A1
Drawn :	Date :	Checked :	Date :
PAP(CJS)	12.10.23	MAS	XXXXX
Project no. :	Drawing no. :	Issue status :	Rev :
4773	A-002	FOR PLANNING	#