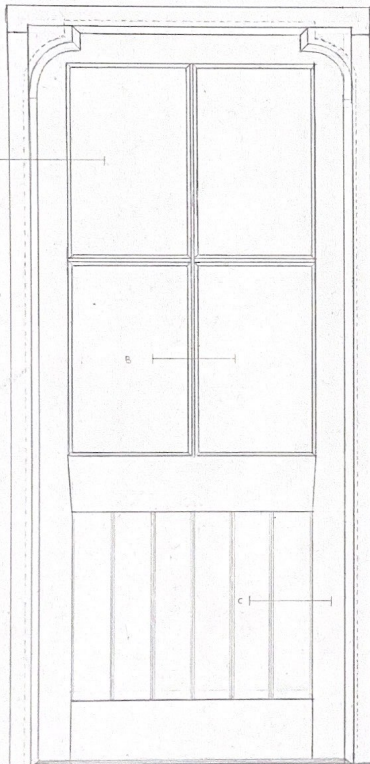
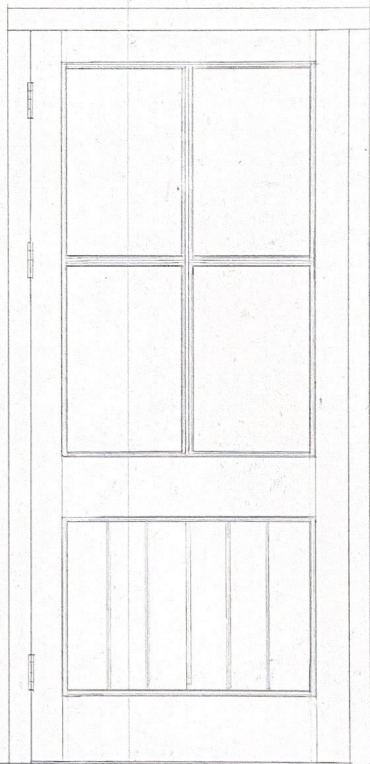


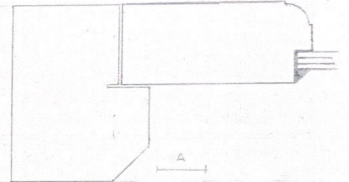
EXTERNAL VIEW



INTERNAL VIEW

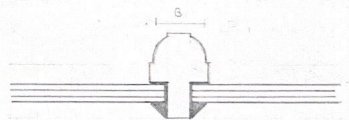


SECTIONAL VIEW & DETAILS



FRAME SECTION SHOWING EXTERNAL CHAMFER DETAIL AND REBATE GROOVE FOR DRAUGHTPROOFING SEAL.

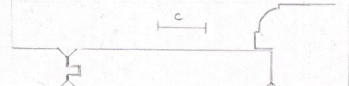
DOOR STILE SECTION SHOWING INTERNAL DETAIL & GLAZING REBATE & PUTTY



GLAZING BAR SECTION SHOWING INTERNAL DETAIL & GLAZING REBATE & PUTTY  
GLAZING DETAIL: 3-4-3 (CAN ALSO SUIT 4-4-4)

BOARD SECTION SHOWING TONGUE AND GROOVE CONSTRUCTION AND V SECTION DETAIL

DOOR STILE SECTION SHOWING INTERNAL DETAIL, BOARD REBATE & EXTERNAL V SECTION DETAIL



TRADITIONAL MOULDED & TENON CONSTRUCTED DOOR & FRAME IN CANADIAN SUGAR FIR TIMBER, UNSEED OIL BASED PAINT FINISH.  
SHAPED FRAME HEAD TO FOLLOW EXISTING STONELWORK (STONELINE INDICATED ON DRAWING WITH DOTTED LINE .....).  
HORIZONTAL GLAZING BAR POSITIONED & PROPORTIONED TO REFLECT ADJACENT ORIGINAL SASH WINDOW MEETING PANELS.  
TONGUE & GROOVE BOARDED LOWER SECTION - IN-KEEPING WITH OTHER ORIGINAL DOOR CONSTRUCTION ELSEWHERE IN PROPERTY.

STANDREWS REAR DOOR PROPOSAL	06.03.24
SCALE: 1:10 (DETAILS: 1:2)	DRAWING NUMBER: 1
KATIE WALFORD FOR LM CONSERVATION	