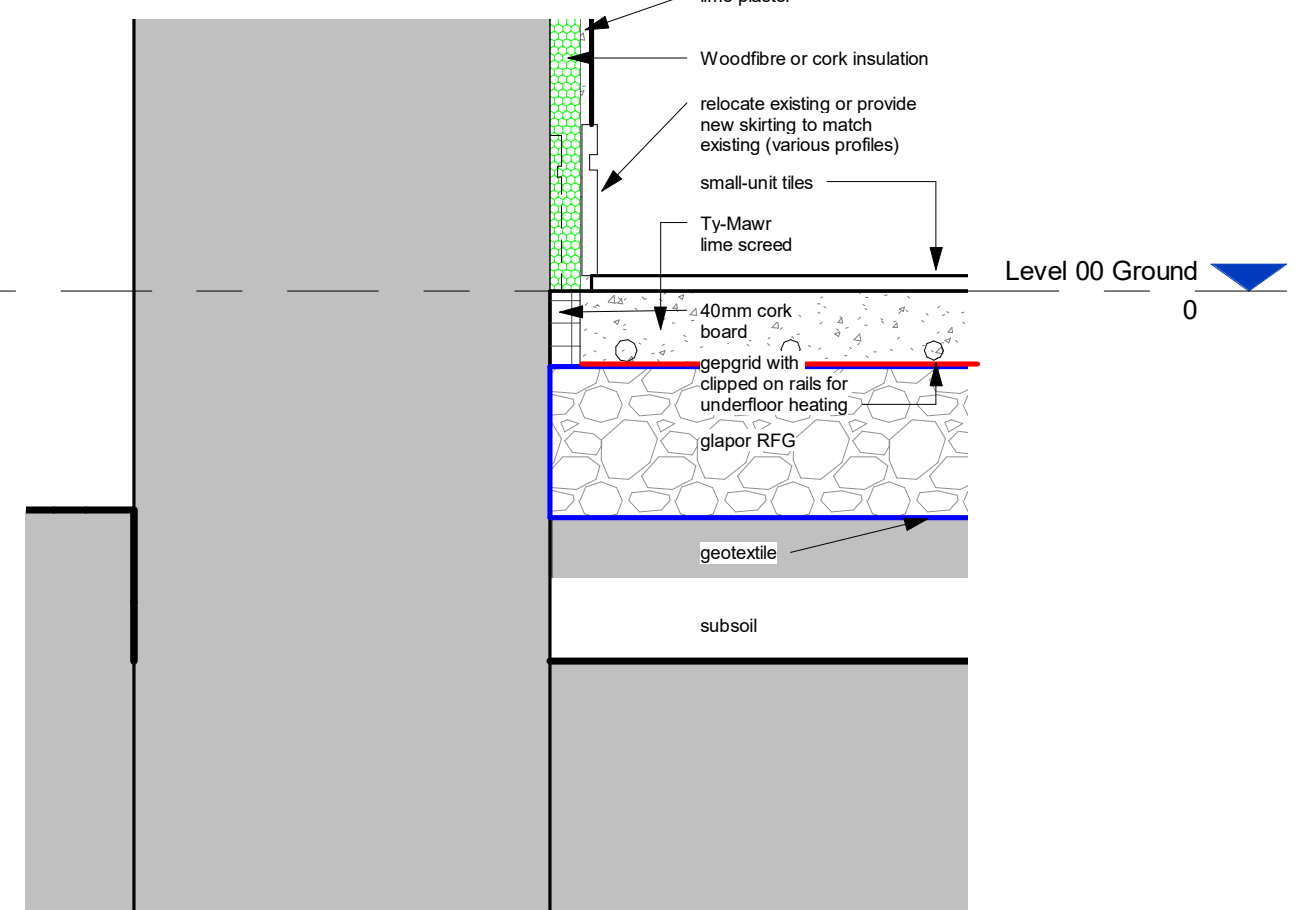
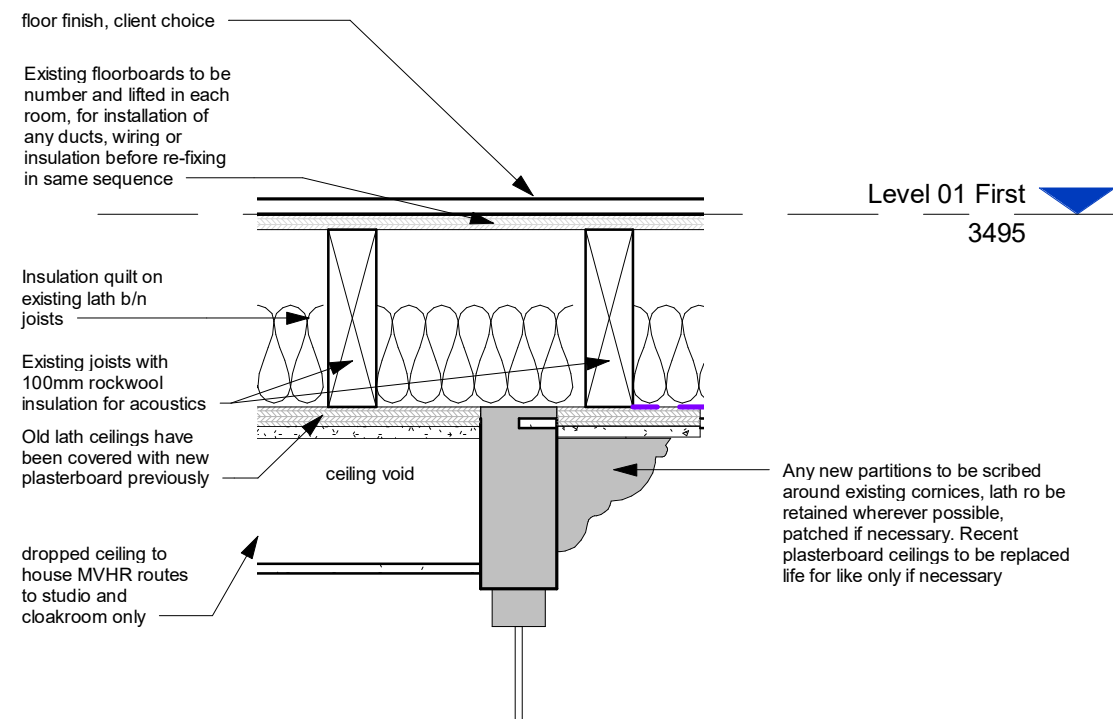


1 Kitchen Floor  
1 : 10



2 Kitchen Wall  
1 : 10

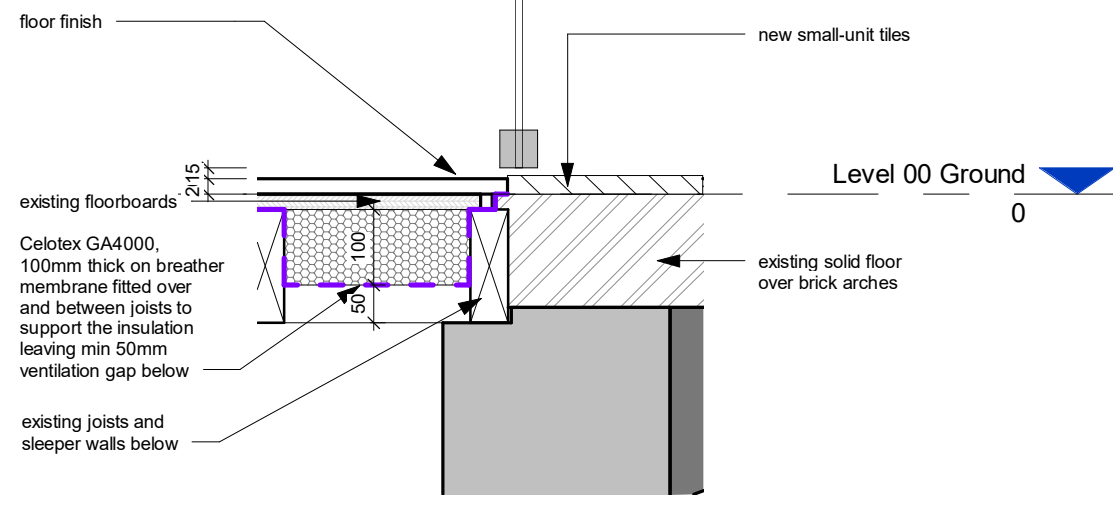


Floors - U-Values

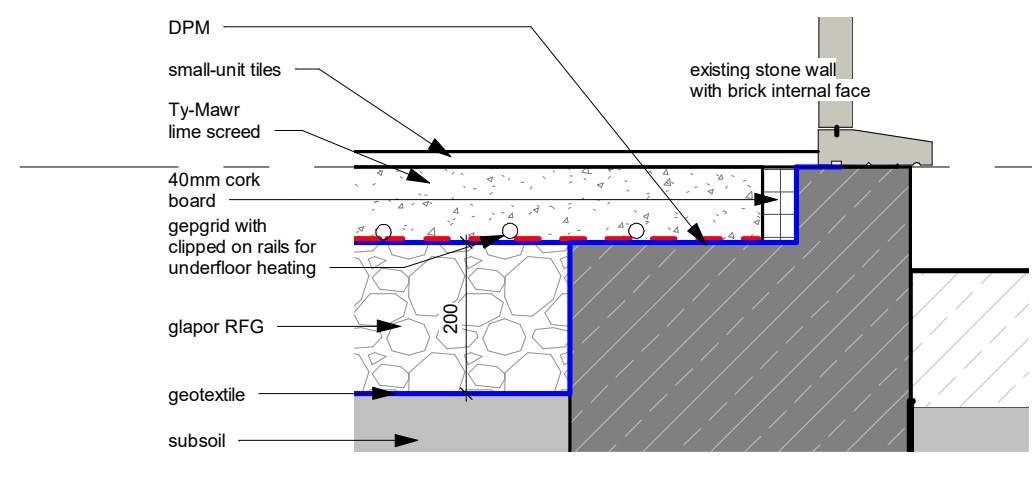
- Ground Floor
- Ty-Mawr Limecrete floor (200mm Glapour RFG) - 0.23 W/m²K
- Existing suspended timber floor with Reduced 100mm Celotex GA4000 PIR insulation - 0.2 W/m²K
- Suspended upper floors (100mm Thermafleecce or Rockwool)
- Walls - U-Values
- Schneider woodfibre GmbH 40mmx580x1250mm with Schneider GmbH 20mm for reveals U value 0.65 W/m²K
- Ty Mawr Ecocork 40mm U value 1.1 W/m²K

Method Statement for floorboards

Existing floorboards to be numbered and lifted in each room, stored securely, for installation of vapour barrier and insulation for the lower floors. Any ducts, pipework or wiring to run between the joists with minimal notching and holes where cross running services cannot be avoided. Re-fix in same sequence, screw securely down before sanding and making good. Any skirting boards to be recorded, numbered and lifted at the same time - with any damaged portions to be replaced with matching profile and material, scarfed in to original. Take particular care with slate skirting boards as these will be difficult to replicate. Remove layers of paint from slate skirting boards, before resealing and fixing to new grounds.



4 Detail - UFH and Crittal screen  
1 : 10



3 Detail - Limecrete floor step  
1 : 10

Rev	description	Author	date
D	Notes updated to submit for planning	CM	23/04/24
C	Insulations and U values updated	CM	14/04/24
B	Notes updated	CM	18/03/24
A	U values and insulation/construction n updated	CM	07/02/24
	first issue	Author	-
		by	date

St. Andrew, High St, Llandaff, CF5 2DX  
Matthew Skuse

Details- Floor, walls  
job no. drawing no. rev status scale @ A3  
348 A(20)-01 D Information 1 : 10