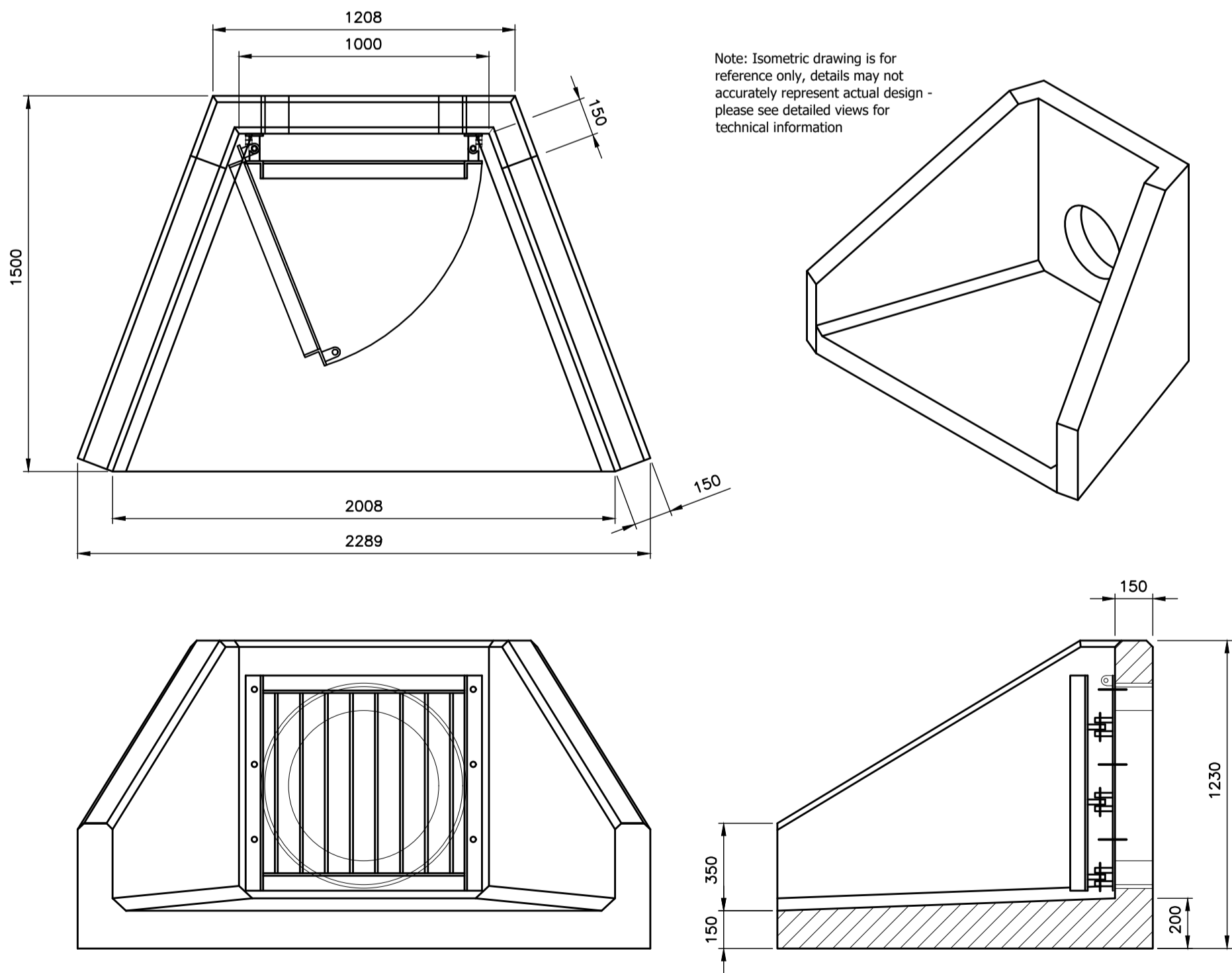


SCALE 1:500

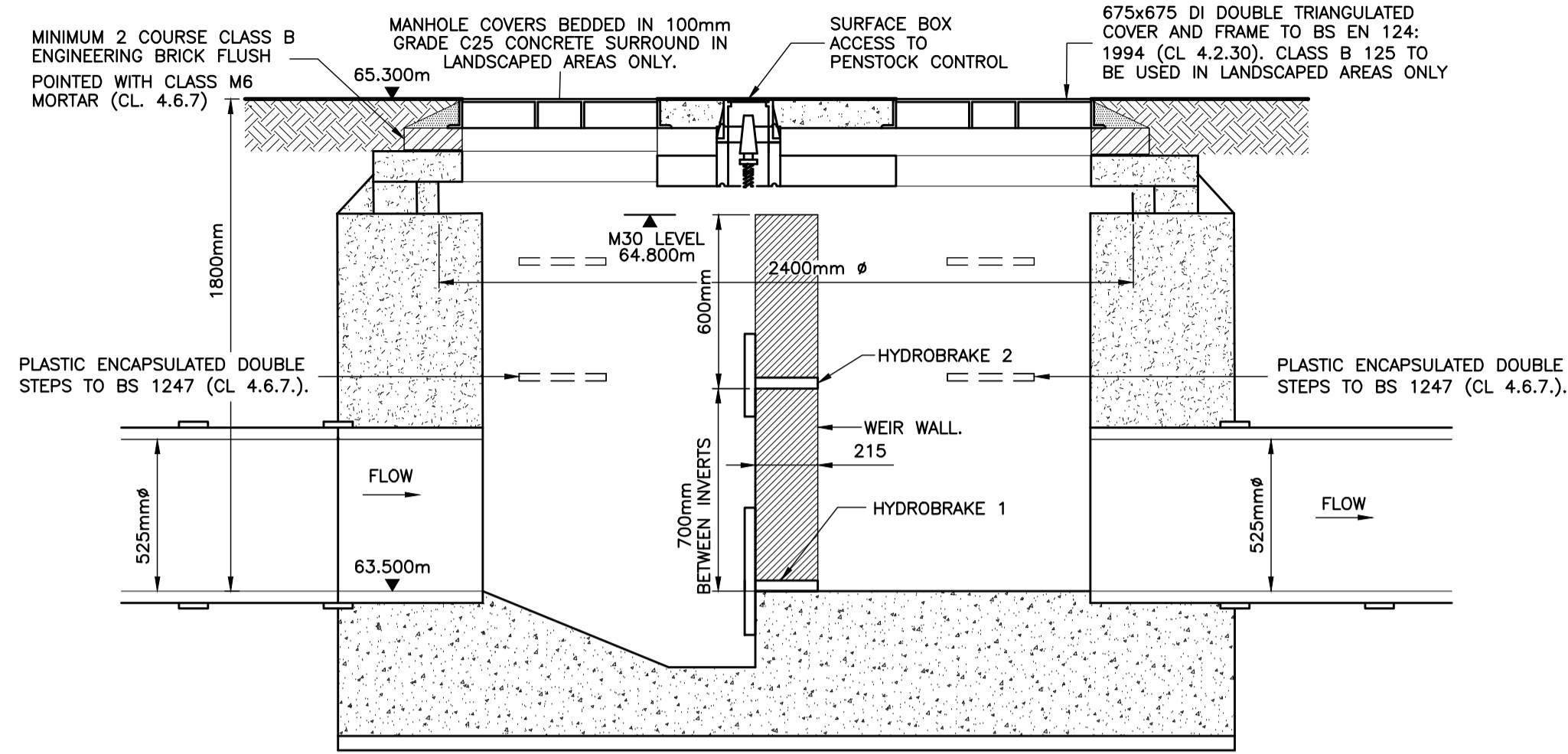
- NOTE:-**
1. DETAILS HAVE BEEN ACQUIRED FROM ALTHON HEADWALL DRAWING SFA10.
  2. SFA10 HEADWALL SUITABLE FOR 450mm ID PLASTIC OR 600mm ID CONCRETE PIPEWORK.
  3. HEADWALL SHOULD BE BEDDED ON MINIMUM 100mm OF SEMI-DRY CONCRETE.
  4. OPENINGS IN BACK WALL CAST TO SUIT OUTSIDE DIAMETER OF THE PIPEWORK.
  5. HEADWALL SHOULD BE SAT LEVEL OR WITH A 1:50 FALL FROM PIPE TO SPILL MOUTH.
  6. FOR INSTALLATION INSTRUCTIONS CONTACT MANUFACTURER FOR DETAILS.
  7. FLAT VALVE NOT REQUIRED AT INLET.

**NOTE:**  
PLEASE CONSULT ALTHON FOR TECHNICAL GUIDANCE ON SPECIFICATION AND INSTALLATION OF HEADWALLS.

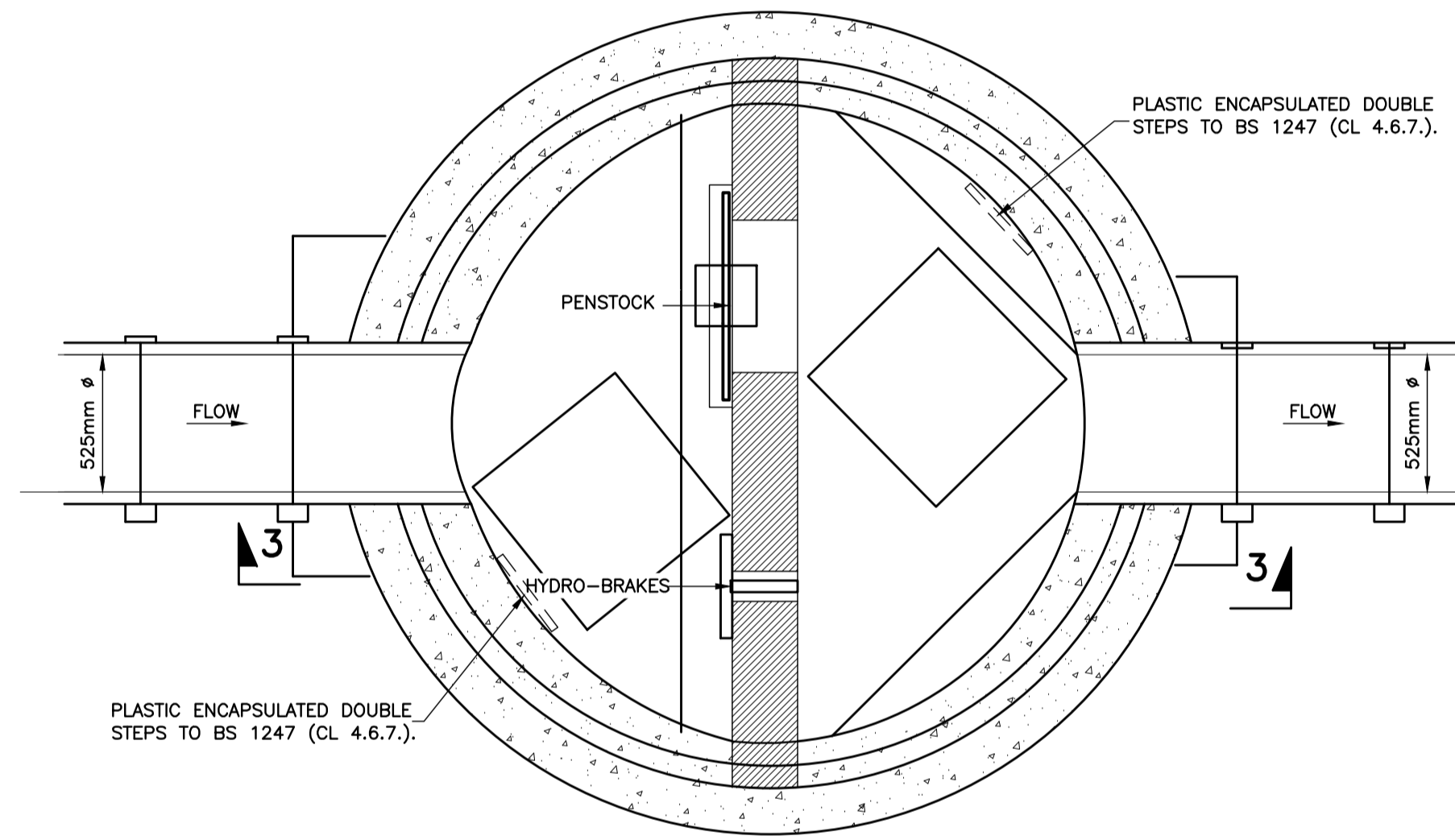
Note: Isometric drawing is for reference only, details may not accurately represent actual design - please see detailed views for technical information



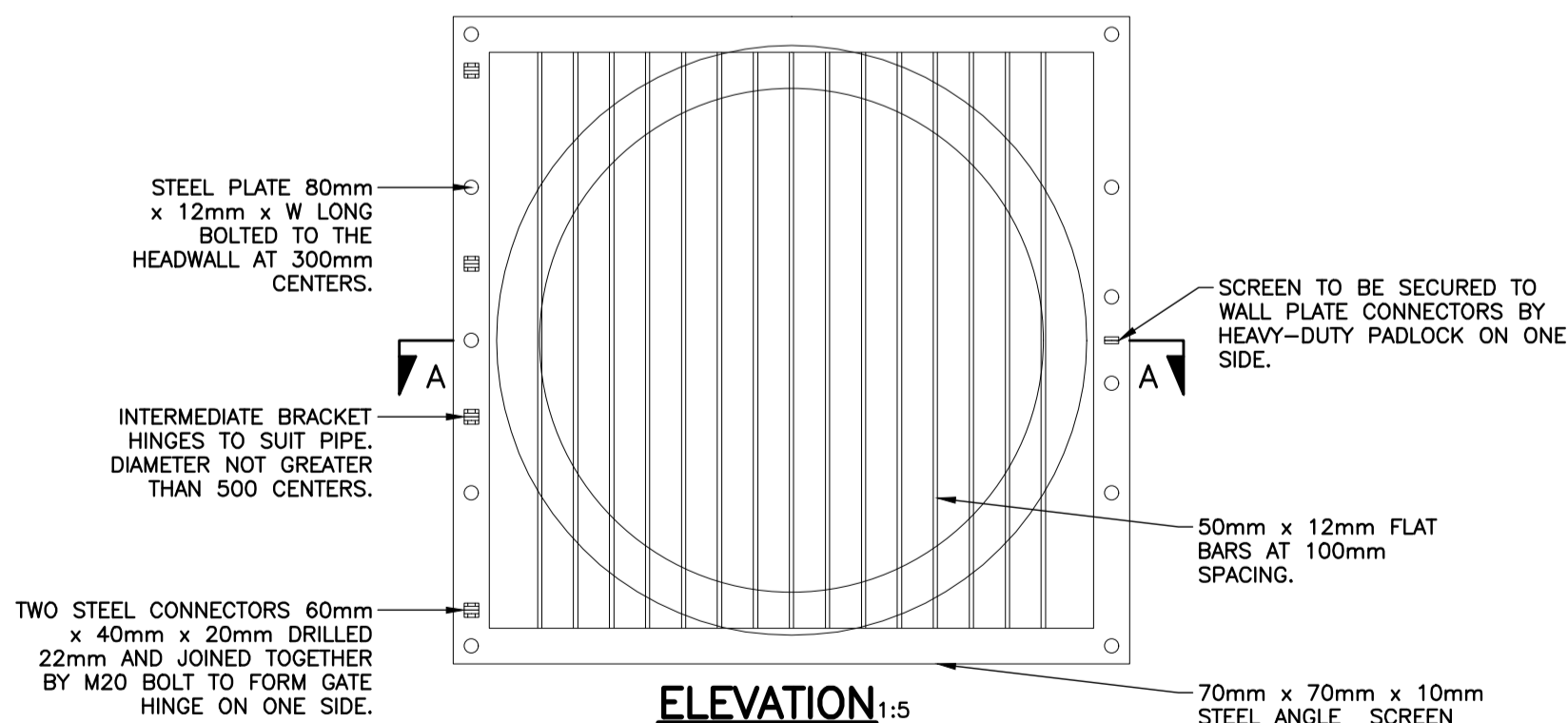
ALTHON SFA 10C HEADWALL WITH SAFETY GRILLE



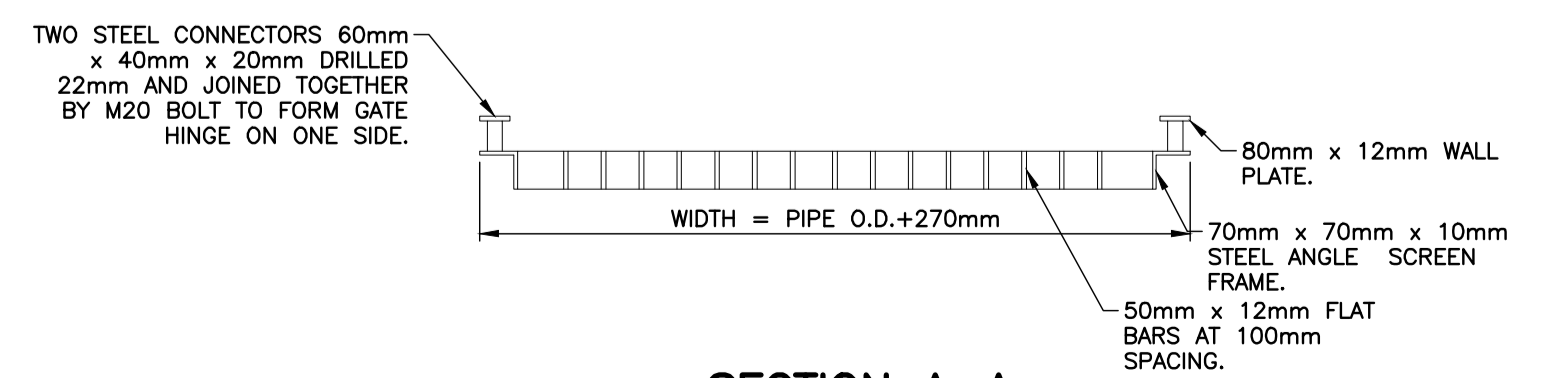
SECTION 3-3 (1:20)  
(SECTION THROUGH CONTROL MANHOLE-S15)



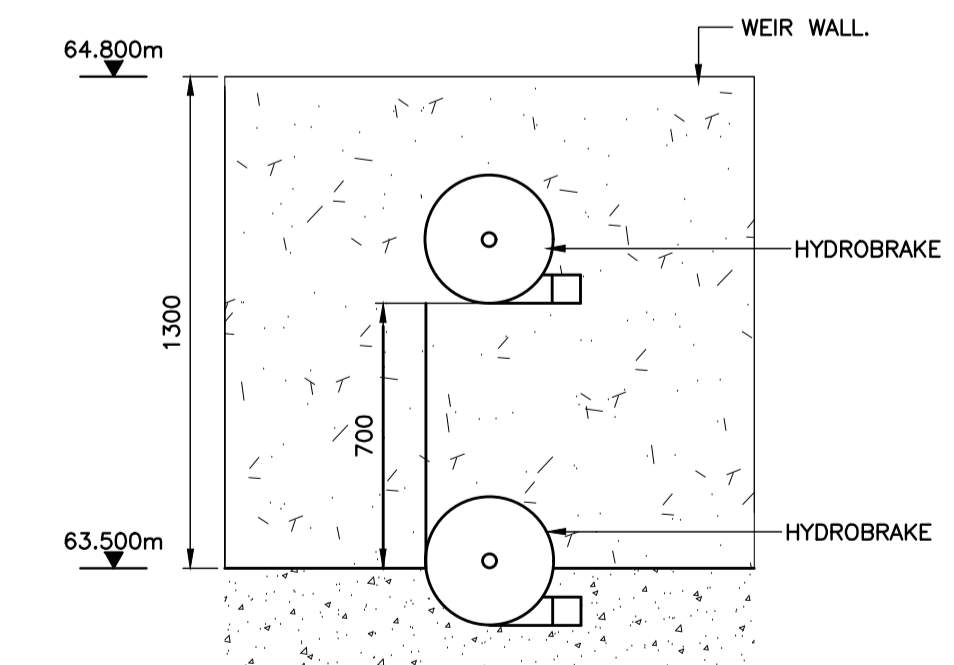
PLAN ON CONTROL MANHOLE (1:20)



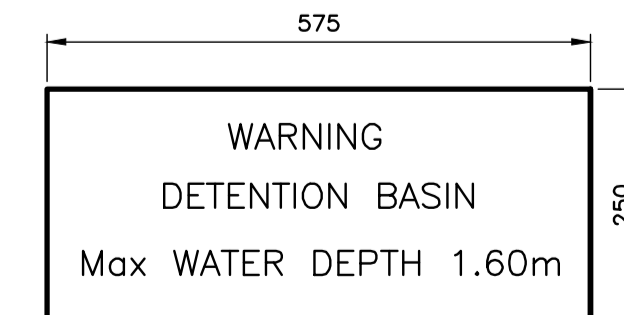
ELEVATION 1:5



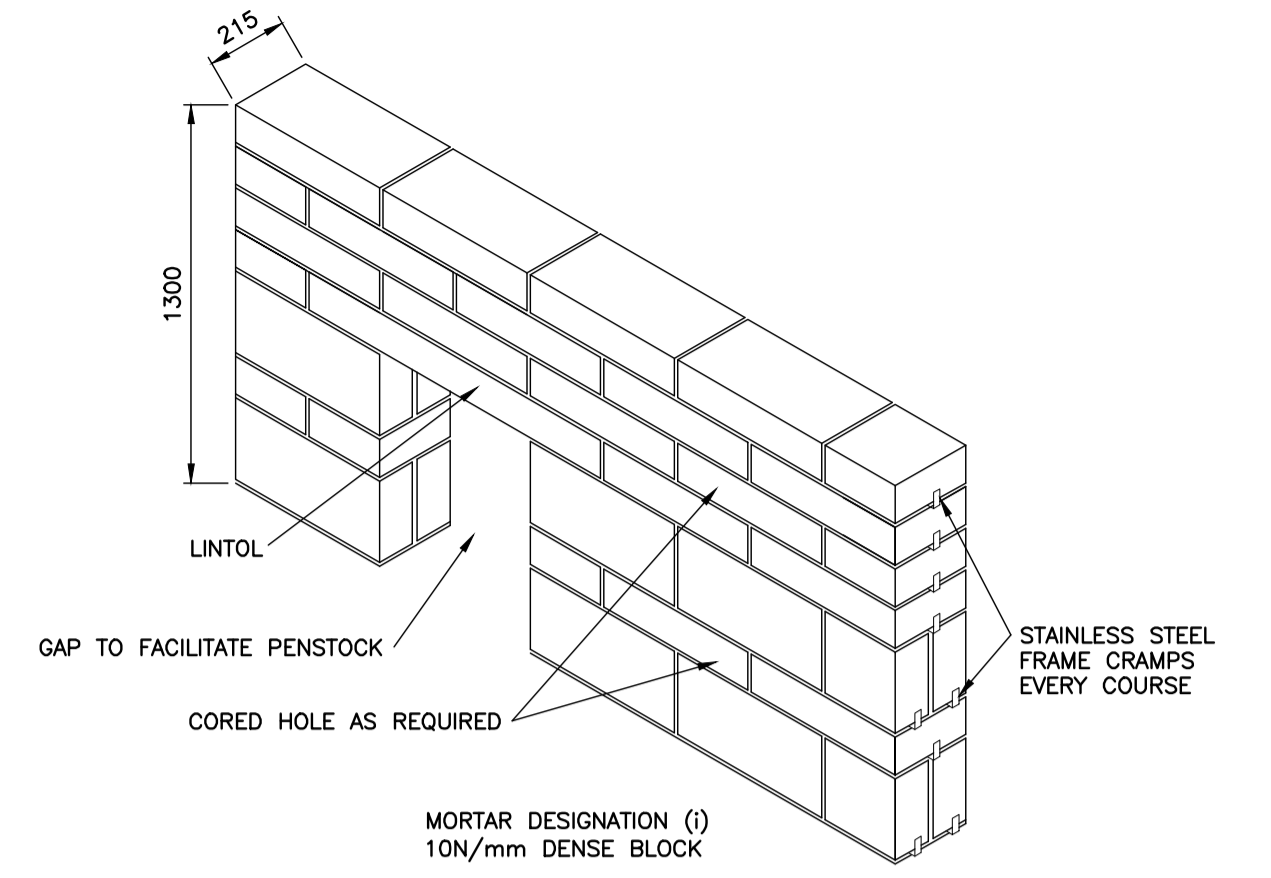
SECTION A-A (1:5)



ELEVATION ON WEIR WALL AT HYDROBRAKE AND V-NOTCH LOCATION (1:20)



WARNING SIGN



WEIR WALL CONSTRUCTION (1:20)

**NOT FOR CONSTRUCTION**

**GENERAL NOTES:-**  
THE CONTRACTOR MUST CONSULT THE CIVIL/STRUCTURAL DESIGN ENGINEER IMMEDIATELY IF:  
a) GROUND CONDITIONS VARY ON SITE.  
b) EXISTING BUILDINGS VARY ON SITE.  
c) DIMENSIONS OR LEVELS SHOWN ARE CHANGED BY ANYONE ON SITE.  
d) COMPLETE OR PARTIALLY COMPLETE STRUCTURES ARE TO BE SUBJECT TO CONSTRUCTION LOADING OR AFFECTED BY TEMPORARY WORKS.  
DO NOT SCALE - IF IN DOUBT, ASK.  
LARGE SCALE DETAILS TAKE PRECEDENCE OVER SMALL SCALE DETAILS.  
ALL MATERIALS ARE TO BE USED STRICTLY IN ACCORDANCE WITH MANUFACTURERS INSTRUCTIONS.  
THE CONTRACTOR WILL BE RESPONSIBLE FOR ALL COSTS INVOLVED IN CHANGES OR MODIFICATIONS REQUESTED AND APPROVED, TO SUIT HIS PREFERRED WORK METHOD. ALL NECESSARY METHOD STATEMENTS MUST BE PROVIDED PRIOR TO COMMENCEMENT OF ASSOCIATED SITE OPERATIONS.  
THIS DRAWING SHOULD ONLY BE USED FOR CONSTRUCTION PURPOSES ONLY WHEN THE ISSUE STATUS IS "FOR CONSTRUCTION".  
ALL DIMENSIONS ARE IN MILLIMETERS UNLESS OTHERWISE STATED.  
ALL LEVELS ARE IN METERS UNLESS OTHERWISE STATED.

© THE COPYRIGHT OF THIS DRAWING SUBSISTS WITH RAMSAY & CHALMERS

C	JS	-	BASIN SIZING REVISED.	13/10/22
B	JS	-	BASIN ACCESS TRACK REVISED.	20/12/21
A	JS	-	INITIAL ISSUE.	02/07/21

Project

**RESIDENTIAL DEVELOPMENT AT THE ECO VILLAGE, WOODEND, BANCHORY.**

Drawing Title  
**DETENTION BASIN DETAILS (1 OF 2)**

Architect  
**RURAL DESIGN**

Job No. **B7613** Drawing No. **139** Revision **C** Scale **AS SHOWN-A1** Issue Status **FOR COMMENT**  
**Ramsay & Chalmers**  
Consulting Structural & Civil Engineers  
Chattan Mews Offices  
18 Chattan Place  
ABERDEEN AB10 6RD  
Tel. (01224) 560 700  
Fax. (01224) 560 701  
Email: info@ramsaychalmers.co.uk  
Website: www.ramsaychalmers.co.uk