

Introducing...

Our new 70mm Triple Glazed Double Rebated Door.

Innovation and quality is at the heart of everything we do. We have designed and developed our new 70mm door based on both *security* and *thermal efficiency*.

Our new 70mm door not only retains its unique handcrafted glass and grain effect colour, but enhances the security with 70mm leaf thickness and thermal efficiency with the introduction of the 50mm triple glazed glass unit.



CHOICE

The Composite Door range is designed for high aesthetic appeal. Doors feature a genuine grain-effect finish, giving the appearance of a traditional timber door whilst delivering the benefits of modern materials. Personalise your door with a colour of your choice, including contemporary RAL colour options, or a bespoke, handcrafted decorative glass design.



GLAZED DOORS

The Composite collection features a range of glazed door styles, from dual glass panels (New York) to arched glazed options (Rio, Moscow).



DECORATIVE GLASS

Each decorative glass unit is handcrafted in our in-house glass studio and includes a range of bevel, lead, resin and sandblast designs. We also offer a range of textured and obscure glass options.



LETTERBOX

Letterboxes are fitted centrally on solid and glazed door styles as standard. On cottage styles, the letterbox can be fitted centrally or at the bottom depending on style.



DOOR THRESHOLDS

Composite doors are available with standard PVCu thresholds or a 'Stormguard' low threshold for excellent weather protection.



ENERGY EFFICIENCY

Composite Doors are designed for maximum thermal insulation, ensuring energy is retained inside the home. All doors and glazing units within the Composite collection offer excellent energy efficiency properties; helping you save on home heating bills and reducing carbon emissions.



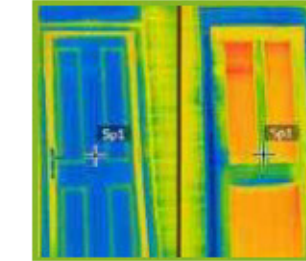
DOOR U-VALUES

Our range of glazed composite doors achieve a U-value of 1.6 W/m²K. If you select a solid/unglazed door style, U-values as low as 0.9 W/m²K can be achieved.



GLAZING UNITS

A range of double and triple glazed units are available, featuring high performance coated glass. All glazing units offer excellent thermal insulation, weather resistance and noise reduction.



HEAT LOSS

The image on the left shows a Composite Door; the blue areas indicating lower heat loss. Compare this to the image on the right of a timber door; red areas indicating a high rate of heat loss.



ENVIRONMENTAL

Composite Doors help reduce harmful carbon emissions. In fact, our doors achieve a 'Global Warming Potential' score of less than five, and an 'Ozone Depletion Potential' score of zero.

STRENGTH & SECURITY

Advanced manufacturing techniques ensure that all Composite Doors are extremely robust, durable and long lasting. Door leafs are backed by a 10 year performance guarantee. Keeping your home safe and secure is of paramount importance, which is why all our Composite Doors are designed for enhanced security. Only the toughest materials are used to form our door leafs, making the doors virtually impact resistant. All doors feature multi-point locking mechanisms and hardware as standard, and are fitted to ultra-strong door frames.



DOOR MATERIALS

Composite Doors are constructed from high density CFC-free polyurethane foam and layers of laminated veneered lumber and finished with GRP (glass-reinforced polyester) inner and outer skins.



DOOR FEATURES

Available in 44mm or 70mm door leaf thickness, Composite Doors are extremely durable and robust. For extra safety, the door glazing units may be toughened or laminated.



HOOKE LOCKS

For extra security, a hook lock option is available. 'Hooks' are situated at the top and bottom of the locking system and slot firmly and securely into keeps located on the door frame.



DOOR PERFORMANCE

All components of the composite door are designed for enhanced durability, including weather-resistant polymer materials and advanced hardware systems.