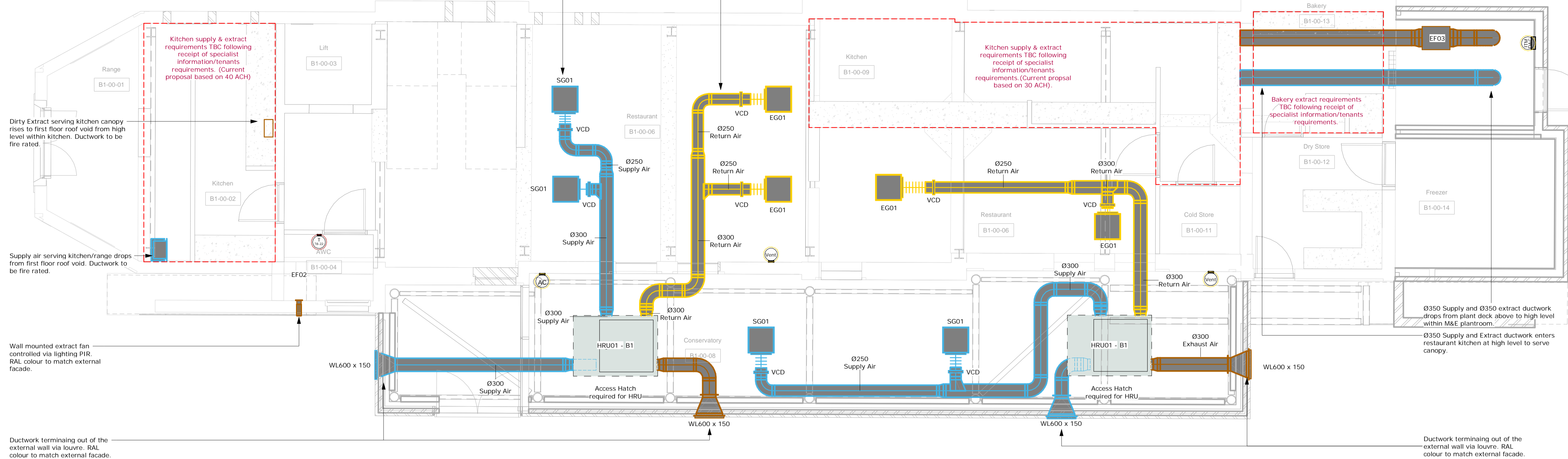
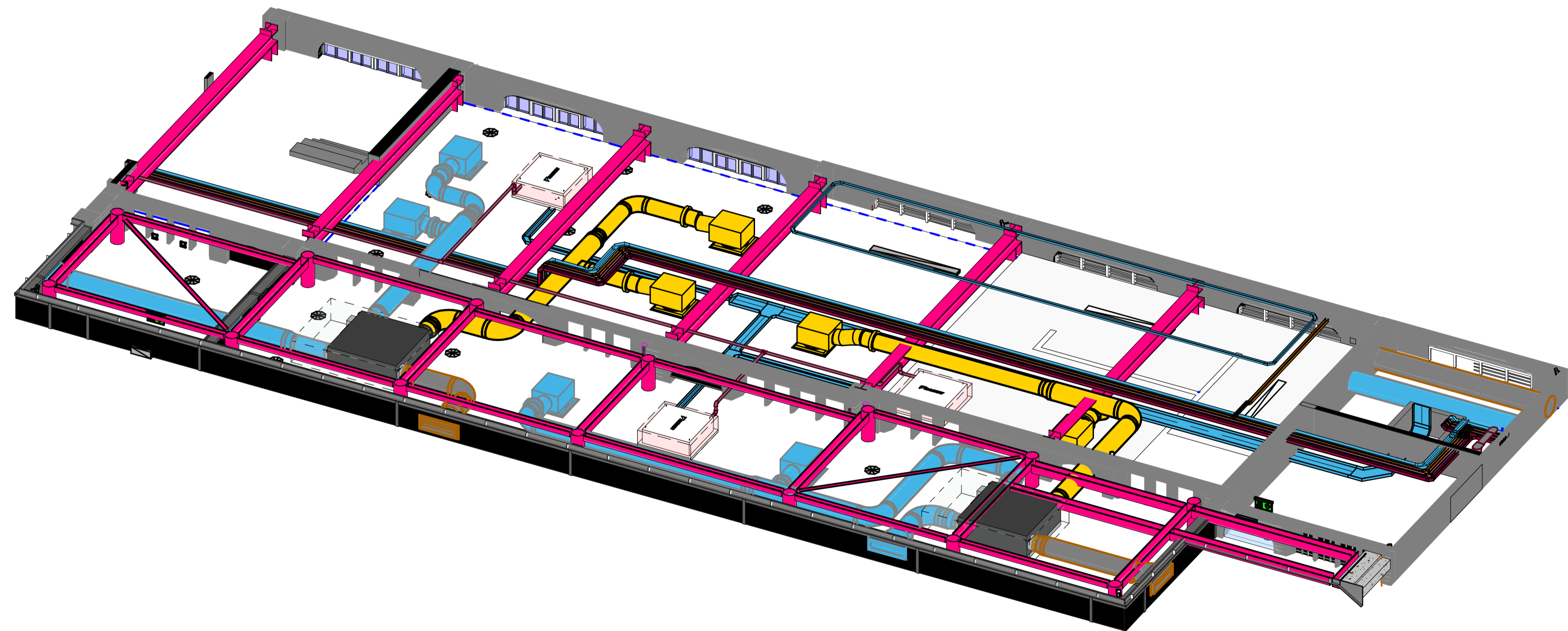


Supply & Extract ductwork running within ceiling void to serve restaurant area.



B1 00 - Ground Floor Ventilation

1 : 50

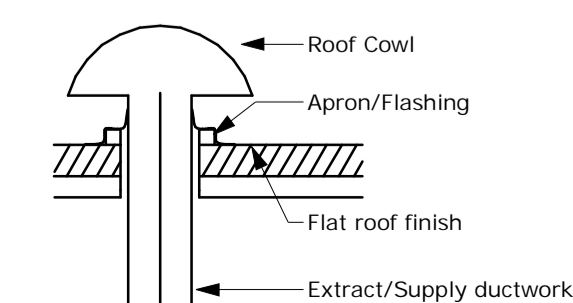


B1 - GF Co-ordinated CV - Ventilation

RIBA Stage	Status
2 - Concept Design	
3 - Spatial Coordination	
4 - Technical Design	✓
5 - Manufacturing and Construction	

PLEASE NOTE: ALTHOUGH THIS DESIGN IS STAGE 4 THE BUILDING DESIGN IS NOT FINALISED IN TERMS OF APPOINTMENT OF A KITCHEN SPECIALIST AND THE AGD, VENTILATION, POWER, CONTAINMENT, FIRE AND DWS ARE SUBSEQUENTLY AFFECTED AND NOT FINALISED. THE SERVICES SHOWN ARE A REPRESENTATION ONLY OF WHAT MAY BE REQUIRED.

Typical Detail: Roof Cowl Detail



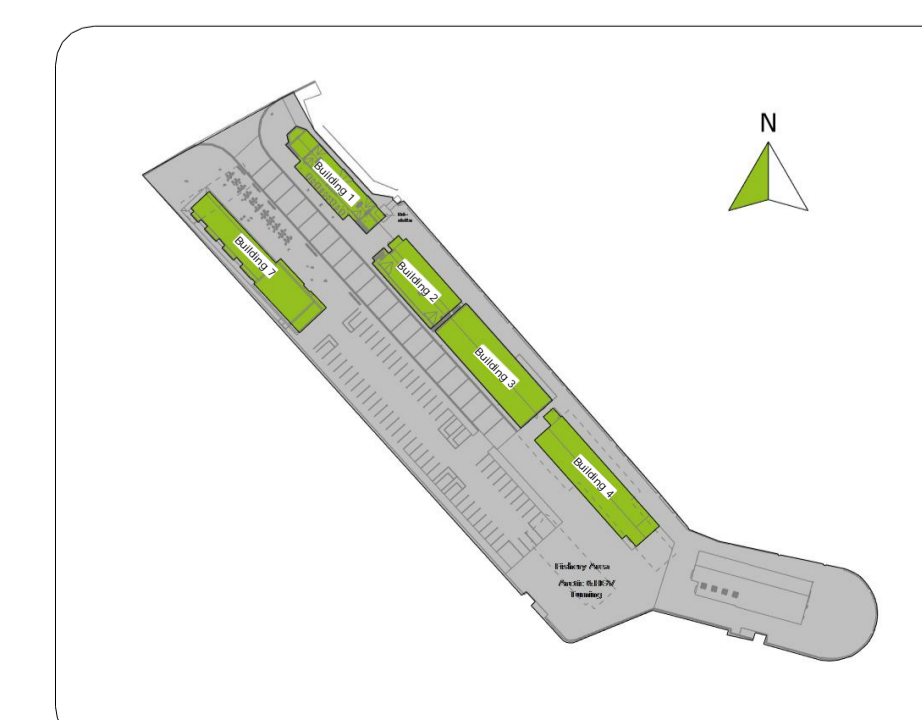
Ref	Manufacturer	Model	Flow	Pressure Drop
EG01	Systemair	TSF-F-315-600-0+THOR-250-315	125.0 L/s	20.0 Pa
EG02	Systemair	TSF-F-250-600-0+THOR-200-250	100.0 L/s	27.5 Pa
SG01	Systemair	TSO-F-315-600-0+THOR-250-315	125.0 L/s	20.0 Pa
SG02	Systemair	TSO-F-250-600-0+THOR-200-250	100.0 L/s	20.0 Pa

Ref	Manufacturer	Model
WL600 x 150	Systemair	WGF 600x150
WL1000X500	Systemair	WGF 1000X500 connector
WL1000X500	Systemair	WGF 1000X500 connector

Ref	Manufacturer	Model	Supply Flow Rate [l/s]	Extract Flow Rate [l/s]	Weight [kg]	Dimensions [mm](WxHxD)
HRU01	Mitsubishi Electric Corporation	LGH-100RVS-E	250	250	73	1185x1224x465

Ref	Room	Room No.	Manufacturer	Model	Flow Rate [l/s]	External Static Pressure [Pa]	Sound Level [dBA]	Controls
EF01	Staff WC	B1-01-07	Vent Axia	Silhouette 100	11	N/A	50	Linked to PIR
EF02	Male WC	B1-01-02	Vent Axia	Silhouette 150	35	N/A	50	Linked to PIR
EF02	Female WC	B1-01-01	Vent Axia	Silhouette 150	40	N/A	50	Linked to PIR
EF02	Staff Lockers	B1-01-08	Vent Axia	Silhouette 150	47	N/A	50	Linked to PIR
EF03	Roof void	N/A	Nuair	SQFA41-3ES	TBC	TBC	TBC	TBC
EF03	Male WC	B1-01-02	Nuair	SQFA41-3ES	TBC	TBC	TBC	TBC
SF01	Roof void	N/A	Nuair	DS6A-LES	TBC	TBC	TBC	TBC
SF01	Stair	B1-00-05	Nuair	DS6A-LES	TBC	TBC	TBC	TBC

Type Image	Manufacturer	Model	Description
AC	Daikin	BRC1H52W Wall Controller	Air conditioning wall controller with 7 day control function
vent	Mitsubishi Electric	PAR-62DR-E Wall Controller	Lossnay wall controller with 7 day control function
therm	Honeywell	T6360B1028 with 2 No. F42006646-001 range stops	Wall thermostat (230VAC switching) with range stops to allow 18-22 temperature setting
ITM DAC	Daikin	Intelligent Touch Controller (ITM) & BACnet interface	AC & ventilation centralised controller with colour touch screen & BACnet interface



Notes:

- The contractor shall examine the drawings and visit site before the works commence to ascertain all local conditions/restrictions likely to affect the execution of the works. No claims arising from failure to do so will be considered.
- This drawing is to be read in conjunction with all accompanying M&E services drawings, specifications and schedules. Do not scale from this drawing.
- Dimensions are in millimetres unless stated otherwise.
- This drawing represents the design intent & strategy. It is neither an installation nor a co-ordination drawing.
- All ductwork, heat recovery units and fans shall be securely fixed to the building structure with the use of a proprietary bracketing system.
- Volume control dampers shall be provided to ductwork as indicated.
- All ductwork shall be galvanised mild steel and all legs shall be insulated in 25mm duct wrap.
- All ventilation systems shall be fully commissioned upon completion.
- Access doors shall be installed adjacent to every fire damper and serviceable component.
- Fire stopping shall be provided where services penetrate through new and existing firewalls. The contractor shall refer to the fire strategy drawings and documents.
- The contractor shall co-ordinate with the building fabric/structure and other trades.
- All ductwork shall be designed, manufactured in accordance with BESEA (Building & Engineering Services Association.) Ductwork specification DW144.
- Fire dampers and smoke dampers shall be installed in all fire wall to suit the level of fire compartmentation requirements in line with the fire strategy drawings and documents. Access panels shall be installed in accordance with the damper manufacturer requirements for access and maintenance.
- All grilles and diffusers shall be installed c/w VCD's and plenum box.
- All grilles and diffusers shall be independently supported where necessary.
- All MVR units shall be installed with adequate maintenance access.
- All positions of ceiling mounted equipment shall be co-ordinated to suit the architects ceiling layout & M&E services.

Legend:

- VCD Volume Control Damper
- FD Fire Damper
- EG-- Extract Grille
- SG-- Supply Grille
- EV-- Extract Valve
- EF-- Extract Fan
- HRU-- Heat Recovery Unit
- Supply Ductwork
- Return Ductwork
- Fresh Air Inlet Ductwork
- Exhaust Ductwork
- Natural Ventilation

Number	Description	Date
P04	Revised for Planning	07.11.23
P03	RIBA 4 Issue	28.07.23
P02	RIBA 3 Issue	03.05.23
P01	RIBA 3 WIP Issue	20.04.23

RIDINGS CONSULTING ENGINEERS
ridingsconsulting.com

Status: S3 - Review & Comment

Client: **WILLIAM BIRCH & SONS LTD**

Project: Scarborough - West Pier

Drawing Title: B1 - Ground Floor Ventilation

Drawing Number: 22113-RCE-VEN-00-DR-M-B1-01

Rev.	Designed	Checked	Scale
P04	JO	LB	As Indicated @A1

copyright © Ridings Consulting Engineers Ltd