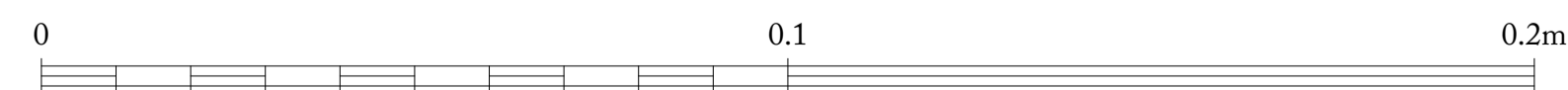


1 FRAME DETAIL
1:1 @ A1

2 MULLION DETAIL
1:1 @ A1

Detailing of window conversion to exactly match existing window door to north-east elevation



Materials

Painted timber with frame and mullions reused.

Glazing - Original glass retained

REV. NO	AMENDMENT	DATE
-	-	-

Ben Pentreath		3 Lamp Office Court Lamb Conduit Street London WC1N 3NF T +44 (0) 20 7430 2424 benpentreath.com	
PROJECT:	HELMINGHAM HALL		
TITLE:	PROPOSED KITCHEN WINDOW DOOR DETAILS 1		
DRAWING NO:	A-101.5	REV. NO:	-
SCALE:	1:1@A1 1:2@A3	DRAWN BY:	PWD
DATE:	08.11.22	CHECKED BY:	RJC

All dimensions to be checked on site.
All designs © Ben Pentreath Ltd 2020. Not to be reproduced without permission