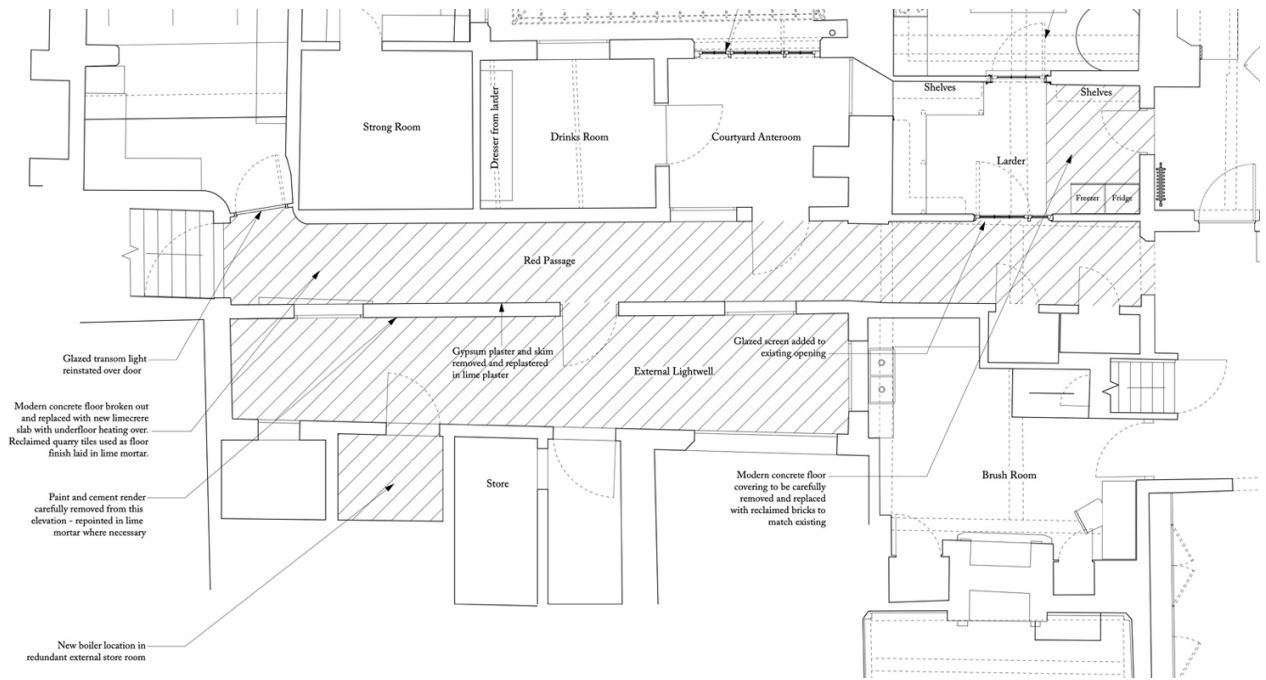


Details of replacement materials to areas of existing concrete flooring

This information has been supplied to discharge condition 4 of listed building consent DC/22/05516.

Plan (A-100) excerpt highlighting areas of concrete removal with hatching:



Replacement flooring to the Larder:

Reclaimed bricks of matching size and tone are to be sourced from local reclamation merchant. Reinstated brickwork to be toothed into existing brickwork section to ensure seamless joint.

Replacement flooring to External Lightwell:

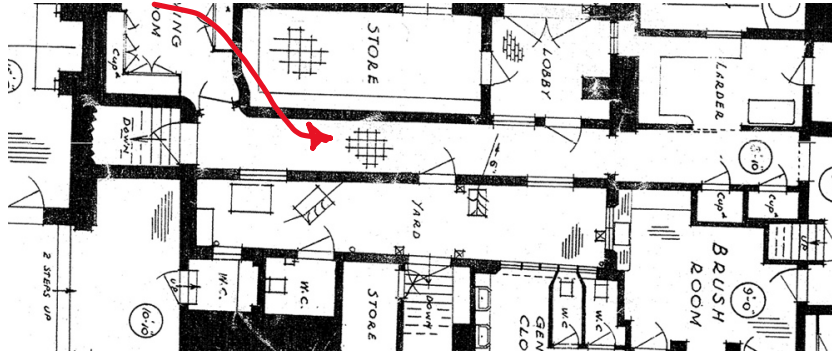
Reclaimed Yorkstone flags are to be sourced and laid using traditional bedding methods.



Ben Pentreath

Proposed replacement flooring to Red Passage:

The historic ground floor survey dated 1952 (page 8 of Historic Development report Oct 22) shows clearly that the pre-concrete floor finish to this area was of traditional square clay pammments. A historic floor tile, of the East Anglia vernacular, similar in appearance to those found in the kitchen and drinks room (marked store on the plan below), although a slightly smaller, 9 x 9 inch format.



Excerpt of 1952 survey

A small trial pit was excavated by hand to check if a historic floor was present underneath the modern concrete layer. Unfortunately, the findings showed that no historic floor survived underneath.

Photo of trial pit investigation below:



The proposed floor covering to the passage will be new, traditional 9 inch square pammments, in mix of light terracotta and pink hues to reflect the historic tones found elsewhere on site. New pammments to be sourced from 'Norfolk Pammments – Traditional handmade terracotta tiles'.

