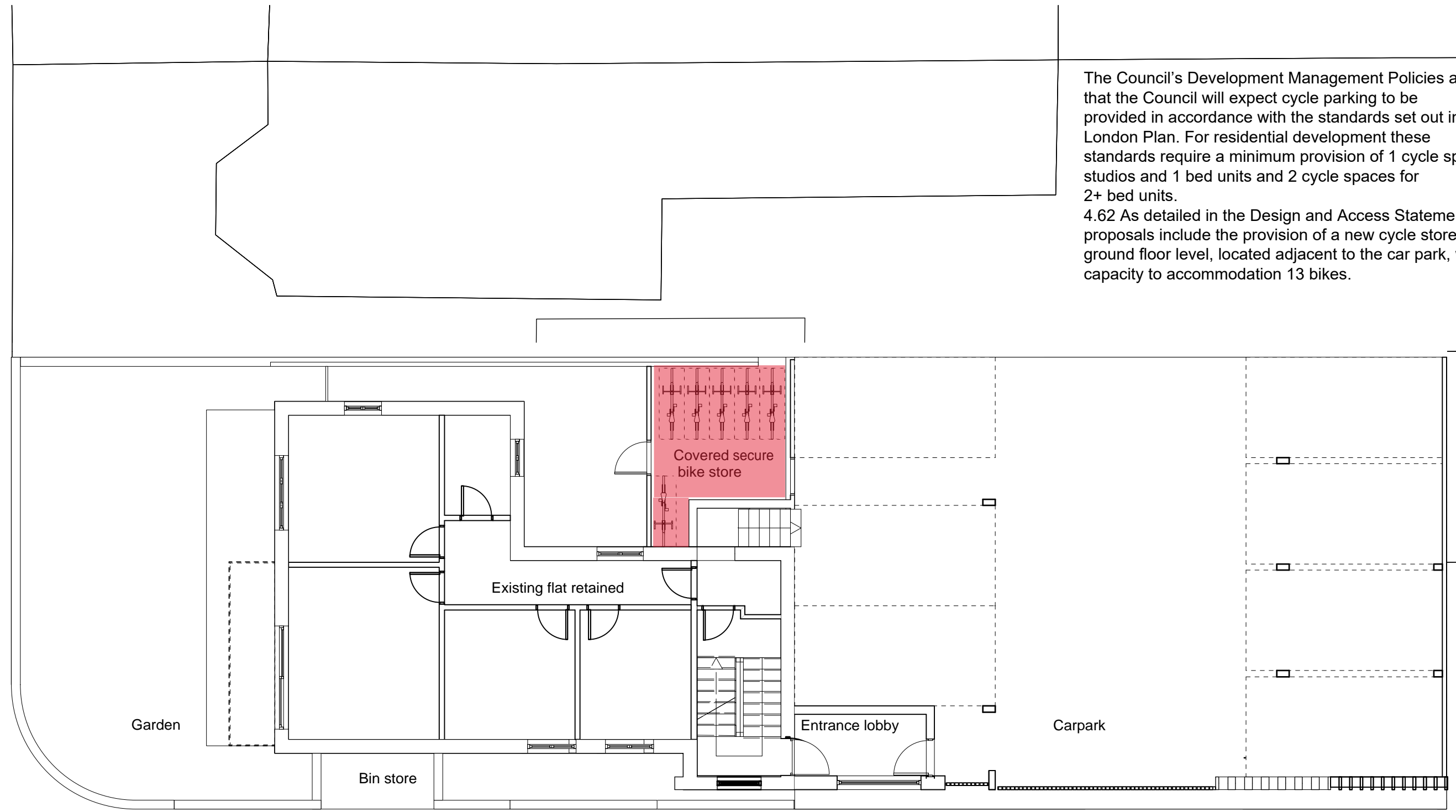




Regents Park Road

The Council's Development Management Policies advises that the Council will expect cycle parking to be provided in accordance with the standards set out in the London Plan. For residential development these standards require a minimum provision of 1 cycle space for studios and 1 bed units and 2 cycle spaces for 2+ bed units.
4.62 As detailed in the Design and Access Statement, the proposals include the provision of a new cycle store at ground floor level, located adjacent to the car park, with capacity to accommodate 13 bikes.



Garden

Bin store

Existing flat retained

Covered secure bike store

Entrance lobby

Carpark

Holly Park

