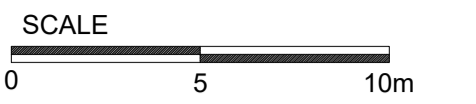


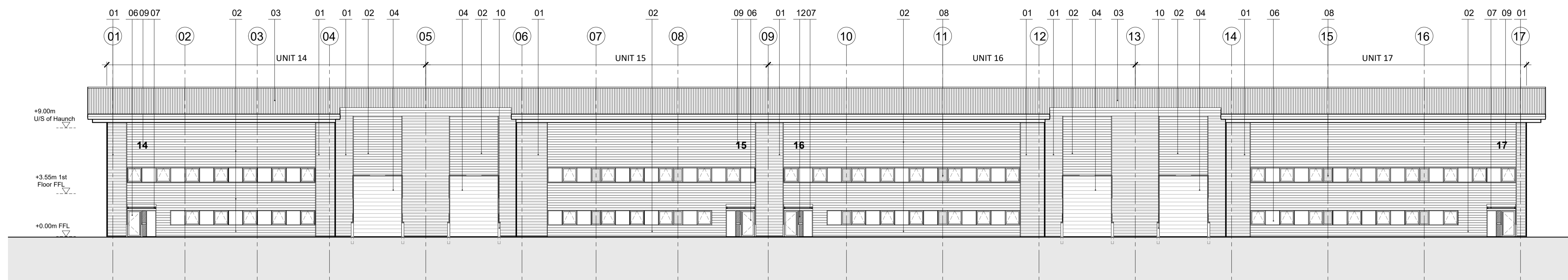
Disclaimer:
Subject to survey.



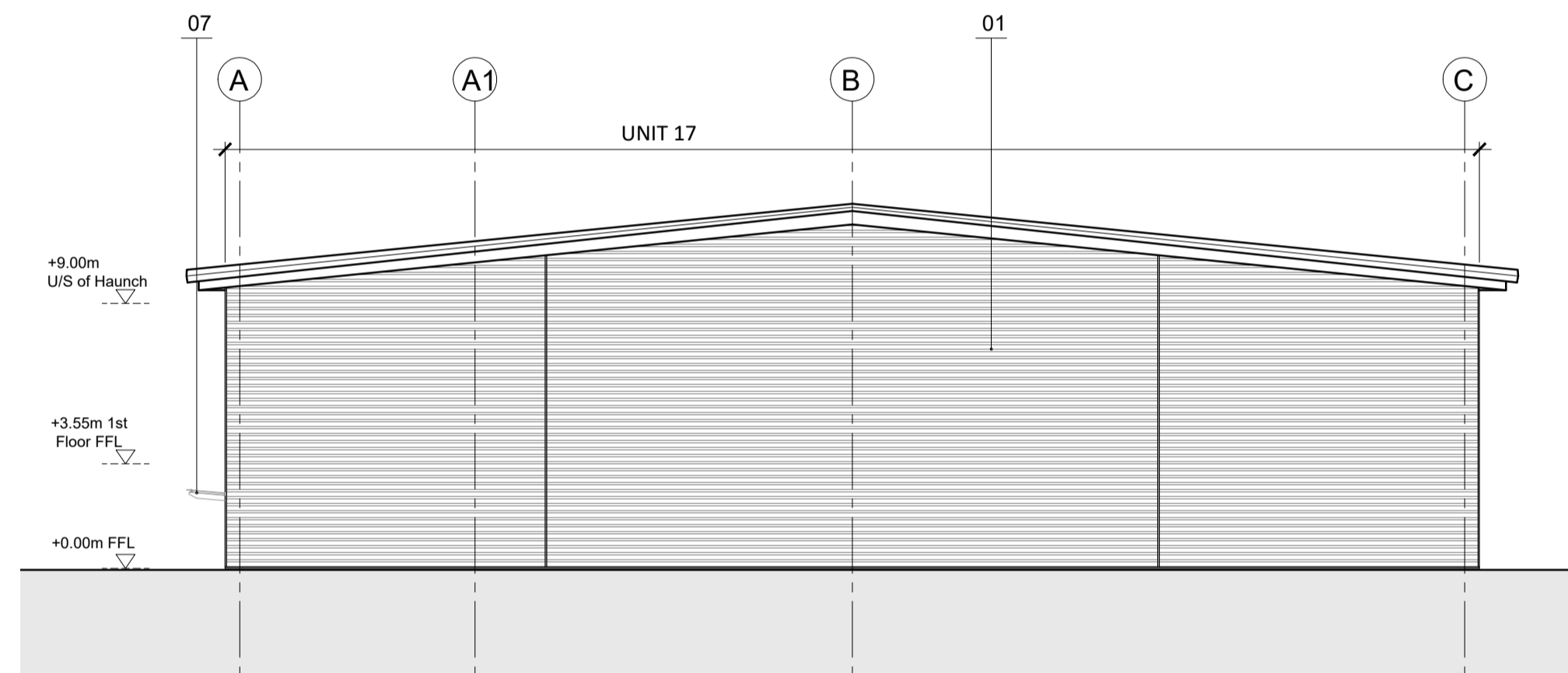
Notes:

MATERIALS KEY:

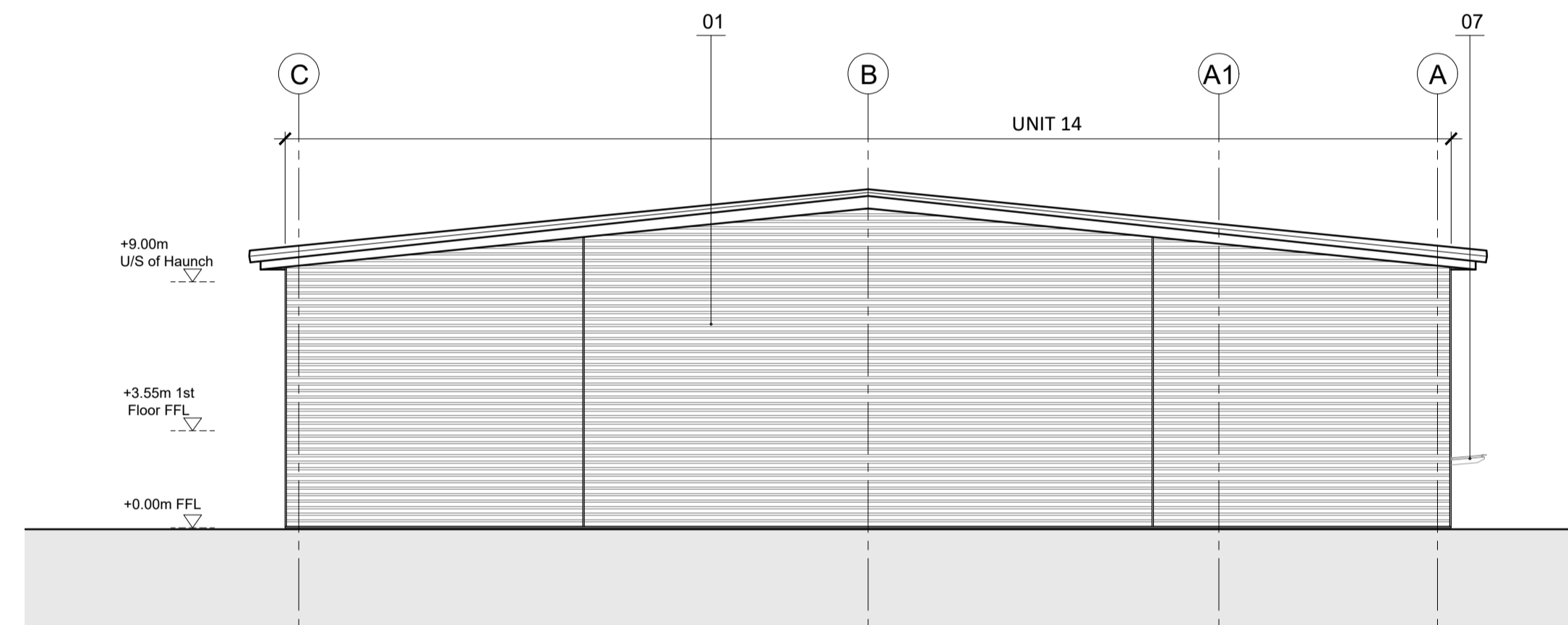
- 01 - Wall Cladding: Horizontal profiled built up steel cladding, colour light grey
- 02 - Wall Cladding: Horizontal profiled built up steel cladding, colour dark grey
- 03 - Roof Cladding: Profile built up cladding, colour grey
- 04 - Level loading doors, colour dark grey
- 05 - Metal escape and personnel doors, colour to match adjacent cladding
- 06 - Framed Entrance Door and Window System, colour dark grey
- 07 - Steel framed, glazed canopy, colour dark grey
- 08 - Look-a-like Ceramic Fritted glazing panels
- 09 - Unit number
3mm Aluminium with silver finish
- 10 - Bollards
- 11 - Fin/ jamb flashing, colour dark grey
- 12 - Metal Spandrel Panel to match frame finish



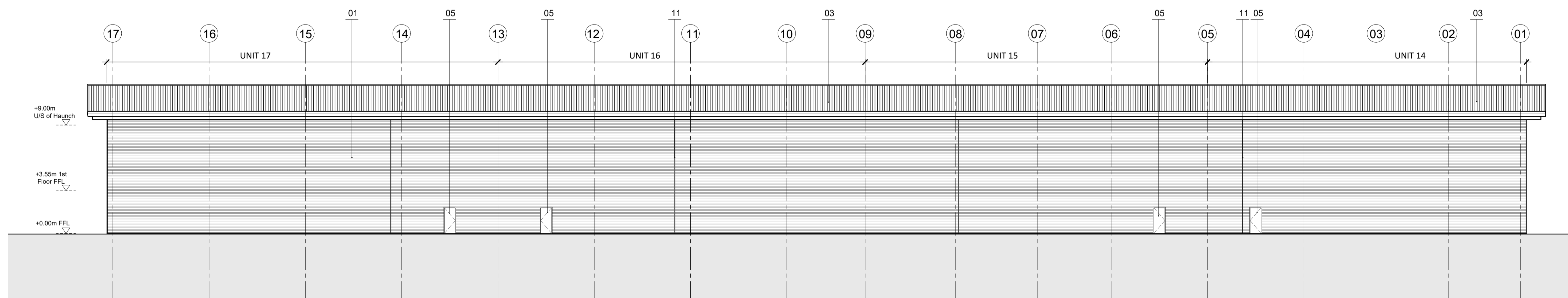
01 Units 14 to 17 - South Elevation
1:200 @ A1 / 1:400 @ A3



02 Units 14 to 17 - East Elevation
1:200 @ A1 / 1:400 @ A3



03 Units 14 to 17 - West Elevation
1:200 @ A1 / 1:400 @ A3



04 Units 14 to 17 - North Elevation
1:200 @ A1 / 1:400 @ A3

A Planning Issue 11.03.2024 SK HA

Rev: Notes: Date: Dwn: Iss:

Suitability Code:

PLANNING

CANMOOR

hale
ARCHITECTURE

22c Leathermarket Street, London, SE1 3HP

Project:
Windrush, Witney
Plot B

Drawing Title:
Units 14 to 17
Proposed Elevations

Project No: 23052 Scale @ A1/A3: 1:200/1:400 Revision: A

Drawing No:
PL-1103