

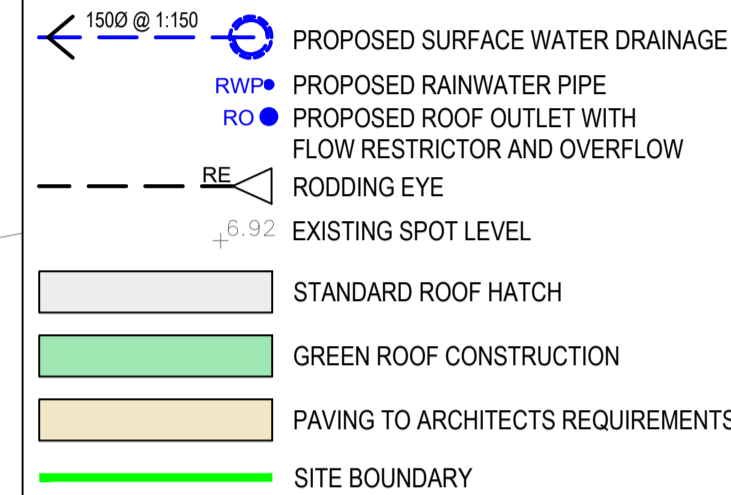
NOTES:

1. ALL DIMENSIONS ARE IN MILLIMETRES UNLESS NOTED OTHERWISE.
2. ALL LEVELS ARE SHOWN IN METRES UNLESS NOTED OTHERWISE.
3. DO NOT SCALE FROM THE DRAWING. USE FIGURED DIMENSIONS ONLY.
4. ANY DISCREPANCIES TO BE REPORTED IMMEDIATELY TO THE ENGINEER.
5. THIS DRAWING TO BE READ IN CONJUNCTION WITH ALL RELEVANT ARCHITECTS, ENGINEERS, SUBCONTRACTORS AND SPECIALISTS DRAWINGS AND SPECIFICATIONS.
6. EXISTING SERVICES HAVE NOT BEEN SHOWN BUT ARE PRESENT - THE CONTRACTOR IS TO LIAISE WITH ALL STATUTORY AUTHORITIES PRIOR TO THE COMMENCEMENT OF ANY WORKS.

GENERAL NOTES:

1. THE DEVELOPER MUST SELF VET AND CERTIFY THAT THE DESIGN CRITERIA, MATERIAL STANDARDS AND WORKMANSHIP SPECIFICATIONS FOR THE PROPOSED ADOPTABLE SEWERS ARE IN ACCORDANCE WITH THOSE SET OUT IN "SEWERS FOR ADOPTION" 7TH EDITION, THE WELSH MINISTERS STANDARDS AND THE REQUIREMENTS OF DCWW AS THE STATUTORY SEWERAGE UNDERTAKER.
2. SUBJECT TO A SECTION 104 ADOPTION AGREEMENT BEING COMPLETE, A SECTION 106 APPLICATION TO CONNECT MUST BE MADE TO DCWW. THE DEVELOPER SHALL GIVE 21 DAYS NOTICE PRIOR TO CONNECTION. THE WORKS MAY ONLY BE UNDERTAKEN BY A SIPS REGISTERED CONTRACTOR.
3. HAZARDOUS WASTE:- CONTRACTOR TO PROVIDE EVIDENCE OF THE PROPOSED REMOVAL OF THE EXISTING PITCH FIBRE DRAINAGE RUN.
4. CONTRACTOR TO CONFIRM PRIOR TO THE ABANDONMENT OF SEWER THAT NO EXISTING CONNECTION UPSTREAM EXIST. (TO ENSURE NO EXISTING USERS ARE CUT OFF.)
5. COMPLIANCE WITH HEALTH & SAFETY MATTERS ON ANY TRENCH/HANDHOLE IS OBLIGATORY AND A PERMIT TO ENTER A CONFIRMED SPACE IS REQUIRED WHEN CONNECTING SITE DRAINAGE TO THE EXISTING PUBLIC SEWERAGE SYSTEM. A PERMIT TO ENTER A CONFINED SPACE WILL BE OBTAINED FROM DWR CYMRU/WELSH WATER PRIOR TO THE WORKS COMMENCING ON ANY PUBLIC SEWERAGE SYSTEM.
6. MH COVER & FRAMES SHALL BE DUCTILE IRON WITH A MINIMUM SQUARE OPENING OF 675x675mm. COVERS SHALL BE DOUBLE TRIANGLE FOR 675mm SQUARE OPENINGS AND BE PROVIDED WITH LOOSE BOLTED CONNECTIONS. FRAME DEPTH SHALL BE 150mm.
7. ALL IRONWORK TO BE KITE MARKED BY BSI OR CERTIFIED BY EQUAL INSPECTION AUTHORITY.
8. PLANTING CLOSE TO ADOPTABLE DRAINAGE RUNS INDICATED IS TO ACCORD WITH THE SPECIFICATIONS IN SFA 7th EDITION SECTION C3.1.13 TO COMPLY WITH THE REQUIREMENTS OF SFA 7th & THE WELSH MINISTERS STANDARDS.
9. NOTE WHERE PLASTIC PIPE IS TO BE USED, IT MUST CONFORM WITH CLAUSES E2.21 AND/OR E2.22 IN SEWERS FOR ADOPTION 7th EDITION AND BE KITE MARKED. THE PLASTIC PIPES ACCEPTED BY DCWW FOR GRAVITY SEWERS FOR DIAMETERS OF 150mm - 300mm INCLUDE:
 - a. MARLEY TWINWALL SYSTEM
 - b. UPONER ULTRARIB SYSTEM
 - c. OSMA ULTRARIB SYSTEM
 - d. POLYSEWER TWINWALL SYSTEM
 POLYPIPE RIGISEWER IS ACCEPTABLE AND AVAILABLE FOR 400mm-600mm AND 750mm-900mm DIAMETER RANGES. PLEASE BE MINDFUL OF THE PROPOSED PIPE MATERIAL/MAKE FOR 375mm DIAMETER SEWERS AS CONCRETE PIPE MAY BE THE ONLY ACCEPTABLE OPTION AT THIS SIZE.
10. CONTRACTOR TO ENSURE PIPES WITH STIFFNESS OF SN8 OR GREATER ARE USED FOR PIPES LESS THAN 500mmØ AND A MINIMUM OF SN2 FOR PIPES GREATER THAN 500mmØ.
11. THIS DRAWING IS TO BE READ IN CONJUNCTION WITH DRAWING No. 17479_501

DRAINAGE LEGEND



PRELIMINARY

03	CC	FP	MJ	24.07.23	AMENDED TO REVISED ARCHITECT LAYOUT
02	CC	FP	MJ	24.07.23	REVISED DRAINAGE STRATEGY ISSUE
01	CC	FP	MJ	24.07.23	DRAINAGE STRATEGY ISSUE

Client
HARRIET STREET LTD

Project
**110 HARRIET STREET
ROATH
CARDIFF**

Title
PROPOSED DRAINAGE STRATEGY



date	drawn	checked	approved
24.07.23	CC	FP	MJ
scale @ A1	project no.		
1:100	17479		
status	drg. no.	rev.	
P	17479_500	03	

DRAWING STATUS
A - Approval, AB - As-Built, C - Construction, D - Draft, P - Preliminary, T - Tender

