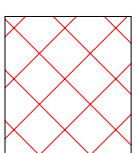
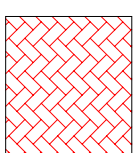




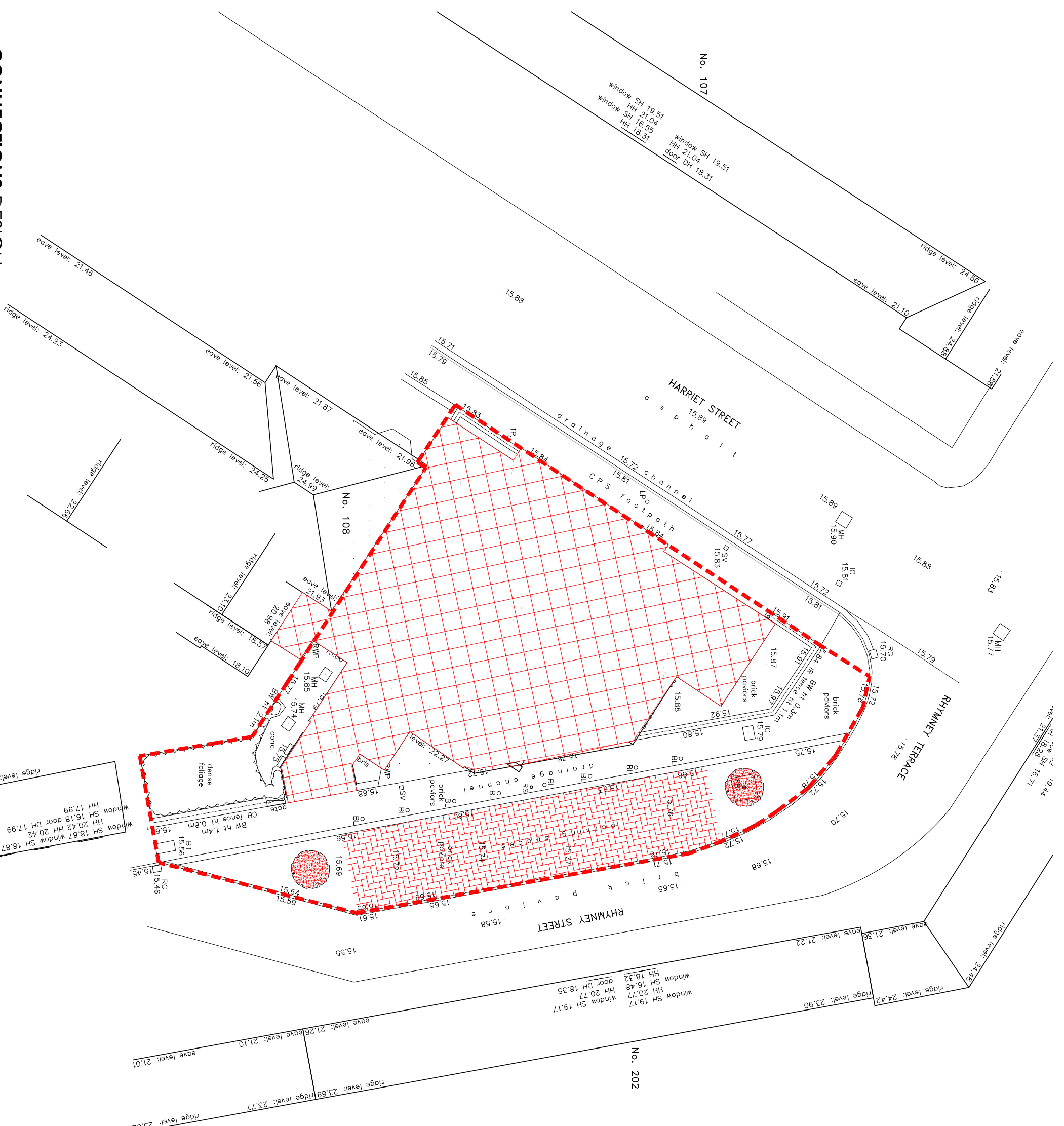
To be demolished



Parking removed



Condemned tree removed



Project
Proposed Redevelopment of 110 Harriet Street - Cardiff

Drawing Title
Demolition Plan

Item
Scale
1:200 @ A3

Job No.
J22/55

Date
Dwg No.
P04

Rev
-

21 Penrhine Road Whitchurch Cardiff CF14 2AA - Tel : 02920 626 521 - E-Mail : Paul@connections-design.co.uk

PLANNING

CONNECTIONS DESIGN

ARCHITECTURE & INTERIORS