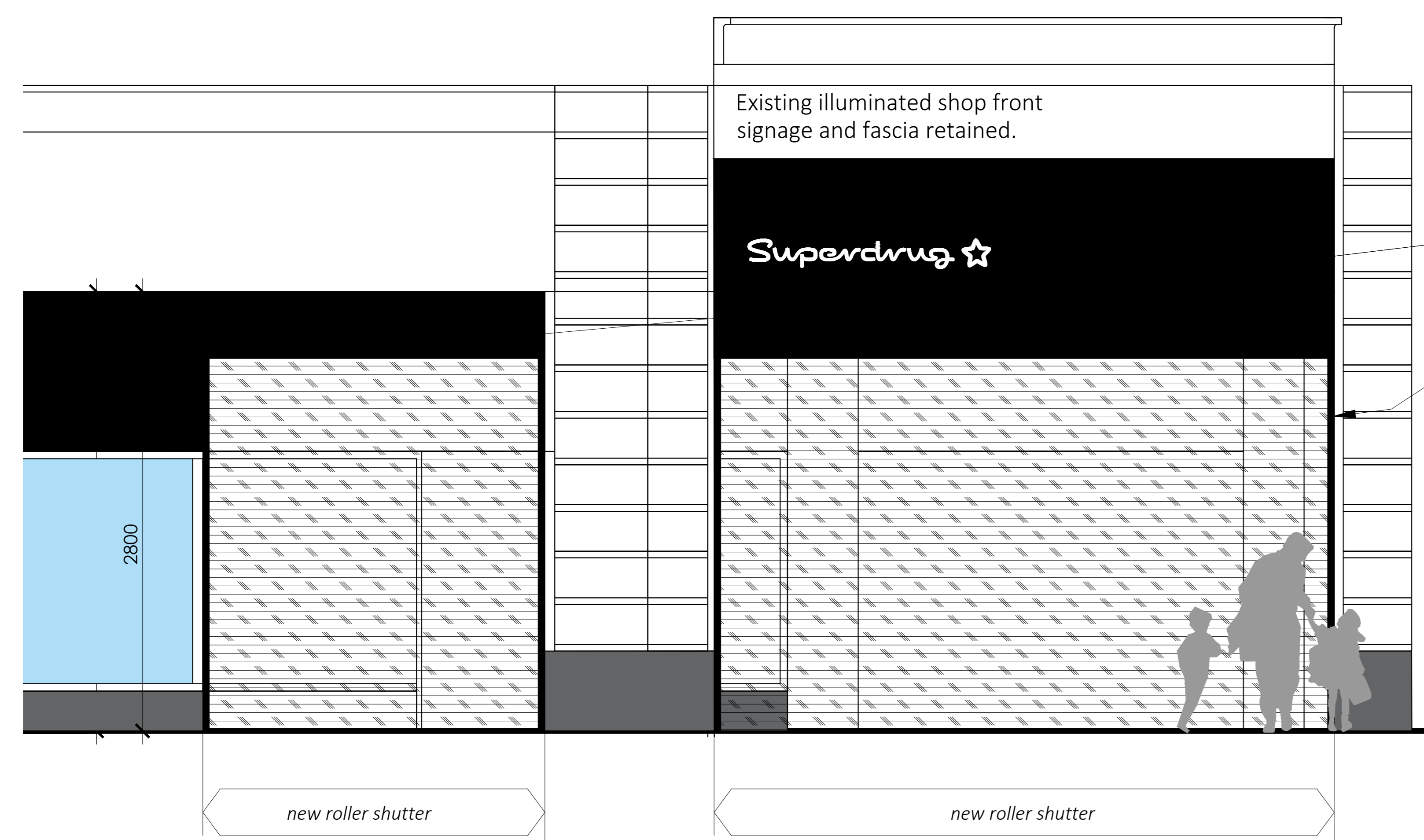
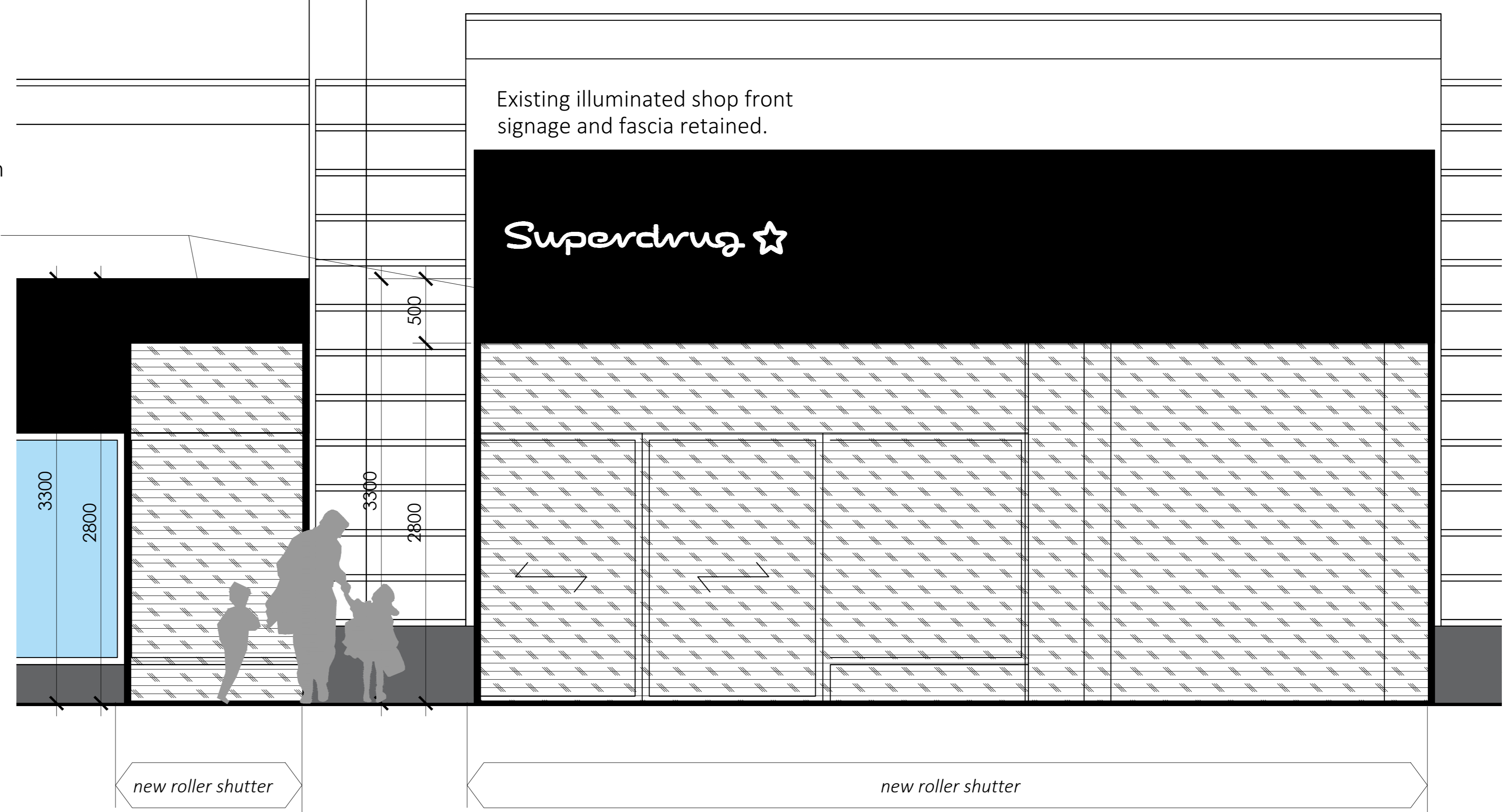


Written dimensions on these drawings shall take precedence over scaled dimensions. Contractors shall verify and be responsible for all dimensions and conditions on the project and this office must be notified of any variations from the dimensions and conditions shown by these drawings prior to commencement of any work. All contractors are deemed to have made themselves aware of site conditions prior to entering into any contract. Shopfitting details must be submitted to this office for approval before proceeding with fabrication. This drawing is the property of rpa. Copyright is reserved by them and the drawing is issued on condition that it is not copied, reproduced, retained or disclosed to any unauthorized person, either wholly or in part without the consent in writing of rpa.

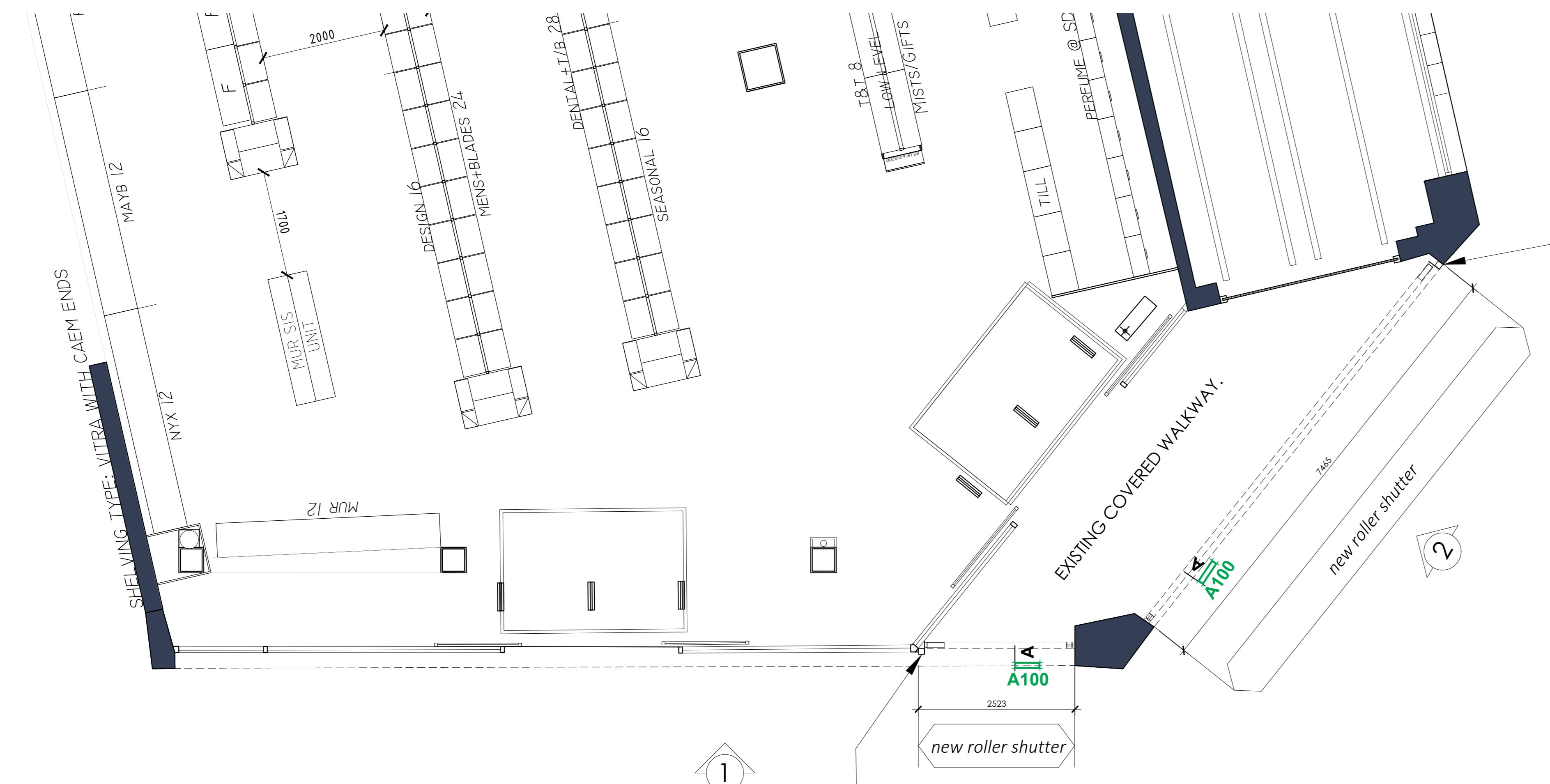
**NOTE:**  
 All shop front sash work dimensions shown are to be confirmed with General Contractors nominated manufacturers / suppliers installation details.



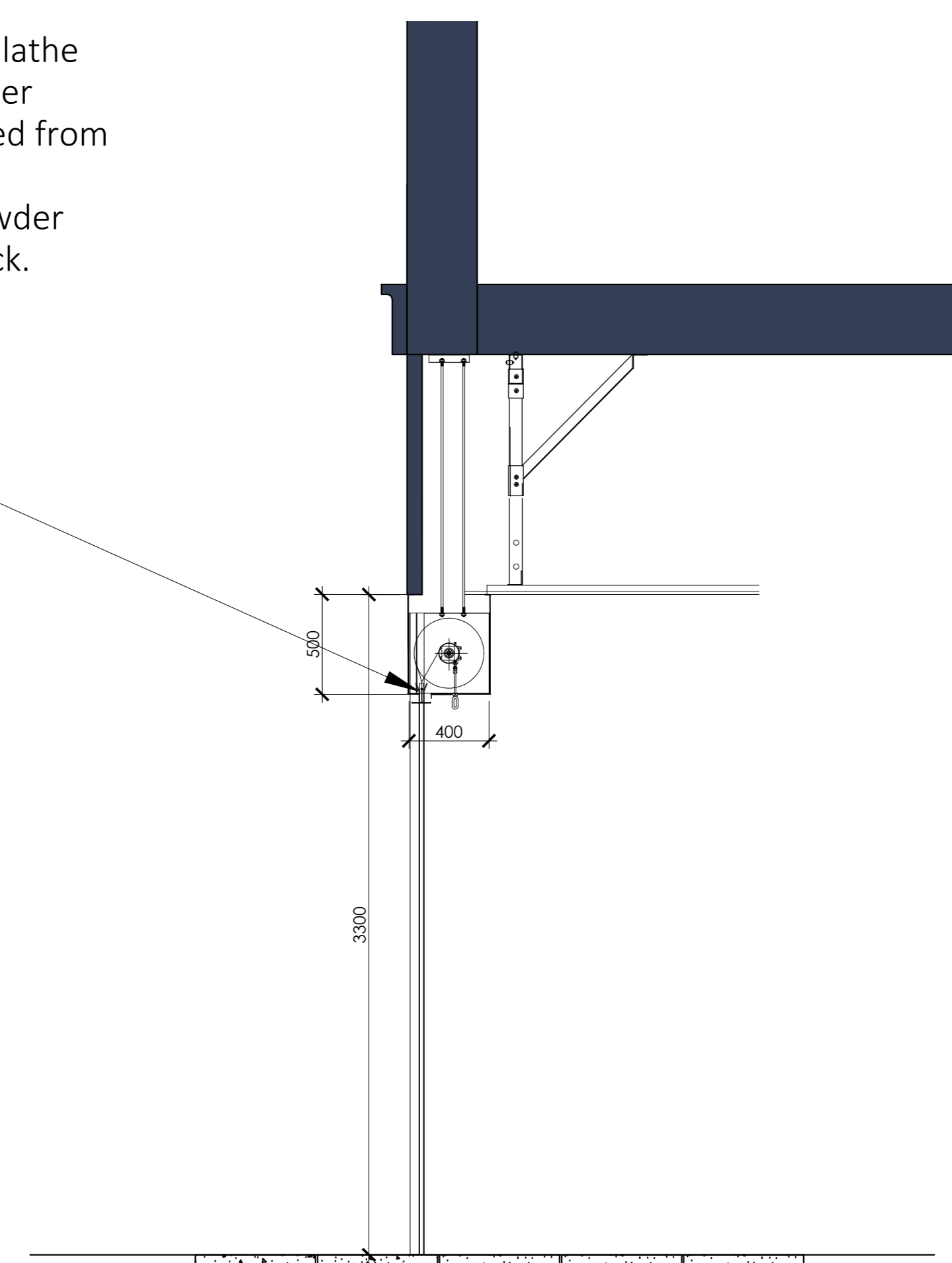
**part elevation 1**  
 scale - 1:25 @ A0



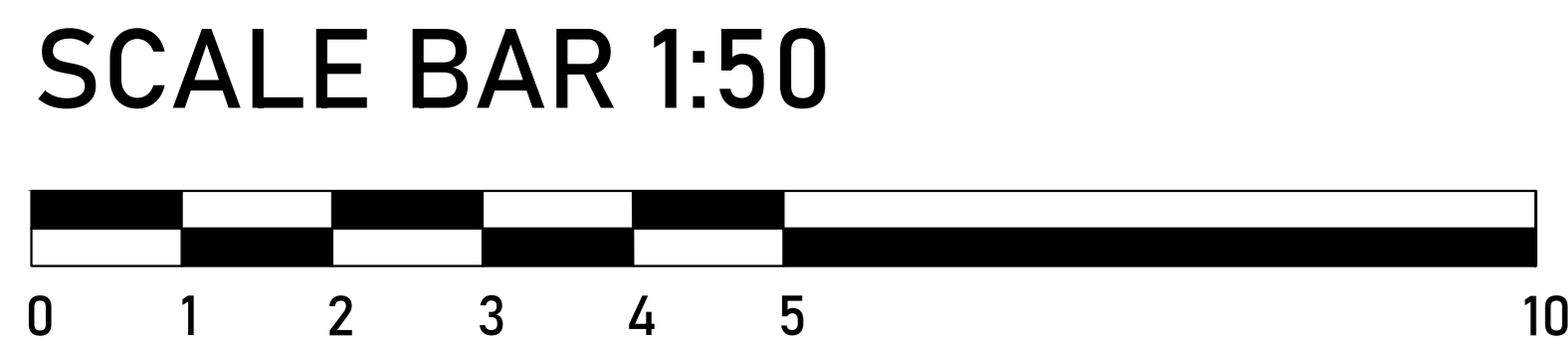
**part elevation 2**  
 scale - 1:25 @ A0



**part plan**  
 scale - 1:50 @ A0



**typical section A**  
 scale - 1:25 @ A0



1	17/04/24	FIRST ISSUE	Dao	MC
rev	date	description	drawn	chk
client				
<b>Superdrug</b>				
store address				
CARDIFF				
1-2 + 7 Queens West				
Queens Street				
Cardiff				
CF10 2AQ				
client store no				
:				
drawing title				
proposed shop front				
drawn by	date	checked		
Dao	Apr'24	MC		