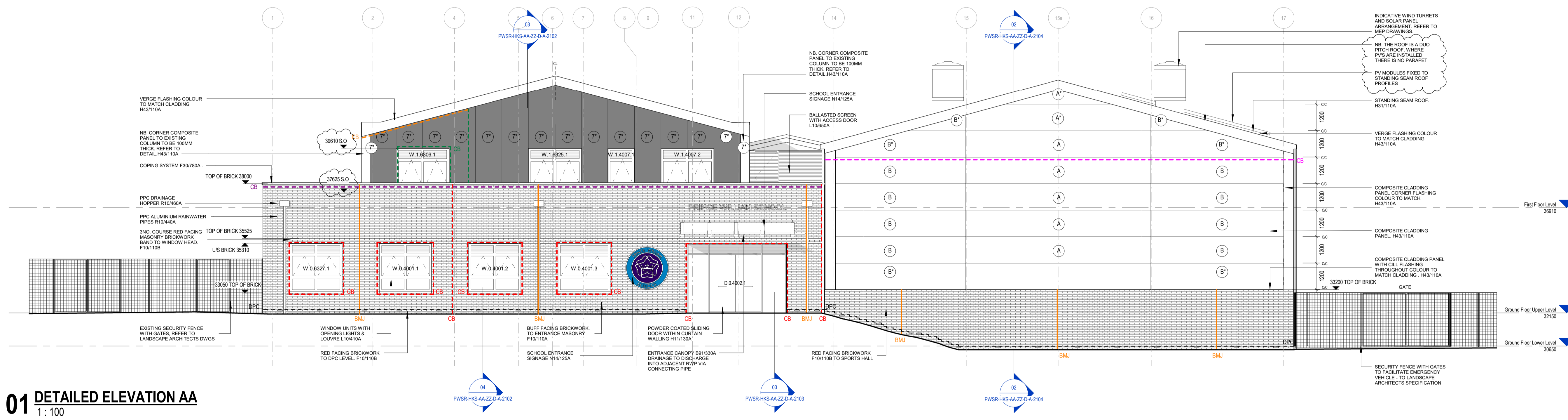
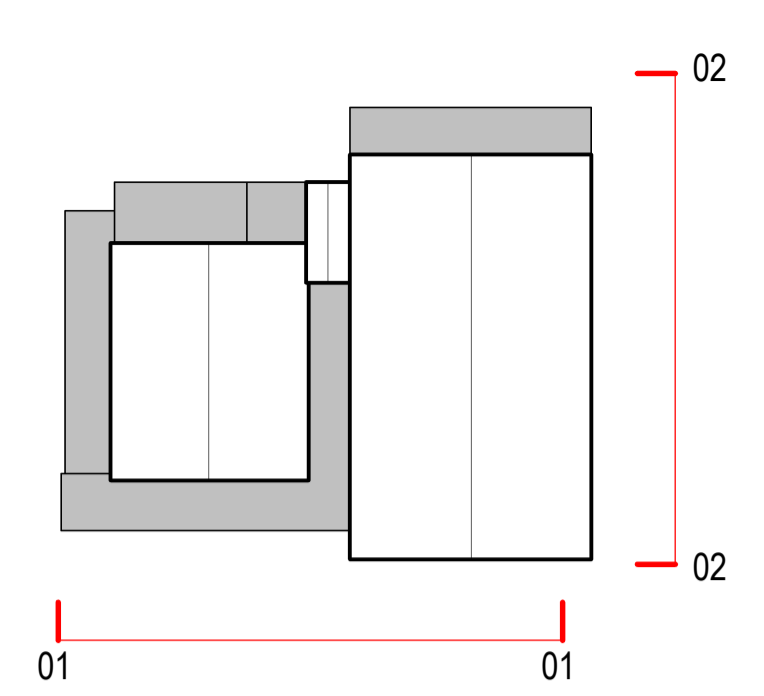
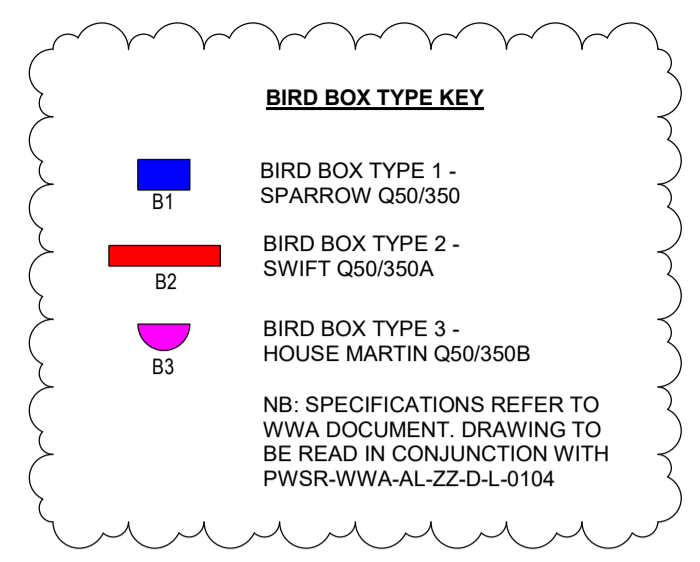
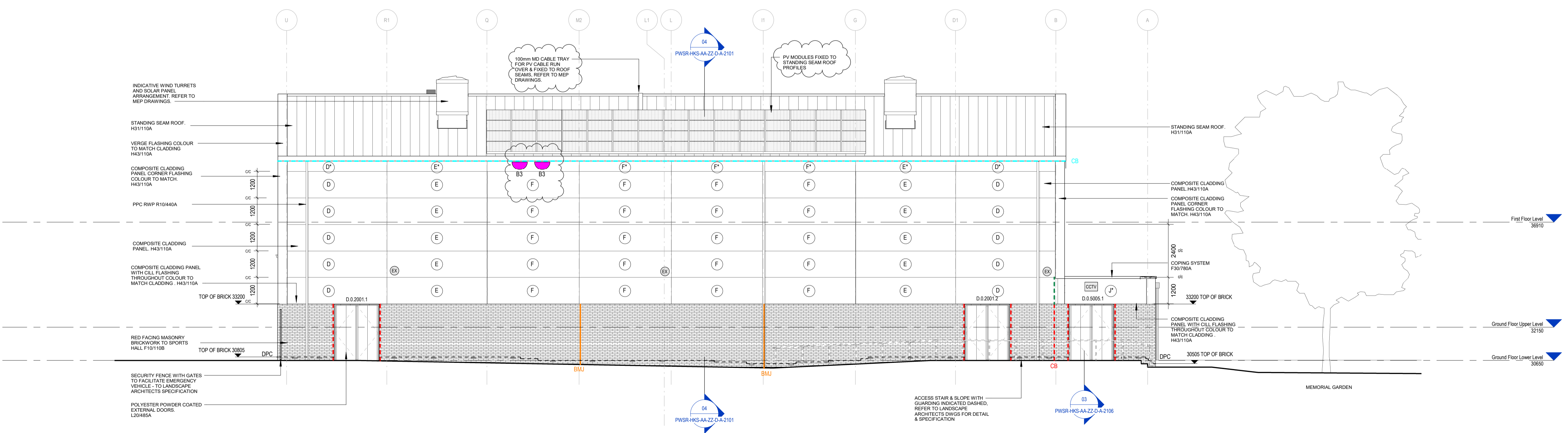


- COMPOSITE CLADDING PANEL KEY - LAID HORIZONTALLY**
- (A) COMPOSITE CLADDING PANEL 1200 X 8385
  - (B) COMPOSITE CLADDING PANEL 1200 X 6450
  - (C) COMPOSITE CLADDING PANEL 1200 X 6000
  - (D) COMPOSITE CLADDING PANEL 1200 X 4970
  - (E) COMPOSITE CLADDING PANEL 1200 X 4540
  - (F) COMPOSITE CLADDING PANEL 1200 X 4175
  - (G) COMPOSITE CLADDING PANEL 1200 X 4440
  - (H) COMPOSITE CLADDING PANEL 1200 X 5080
  - (J) COMPOSITE CLADDING PANEL 1200 X 4075
  - (K) COMPOSITE CLADDING PANEL 1200 X 2950
  - (L) COMPOSITE CLADDING PANEL 1200 X 2022
  - (M) COMPOSITE CLADDING PANEL 1200 X 2375
  - (N) COMPOSITE CLADDING PANEL 1200 X 2630

- COMPOSITE CLADDING PANEL KEY - LAID VERTICALLY**
- (1) COMPOSITE CLADDING PANEL 1200 x 6070
  - (2) COMPOSITE CLADDING PANEL 1200 x 1060
  - (3) COMPOSITE CLADDING PANEL 1200 x 4250
  - (4) COMPOSITE CLADDING PANEL 1200 x 3760
  - (5) COMPOSITE CLADDING PANEL 1200 x 1300
  - (6) COMPOSITE CLADDING PANEL 1200 x 600
  - (7) COMPOSITE CLADDING PANEL 1200 x 5670
- (X) DENOTES PANEL MODULE OF THE RELEVANT LETTER MODIFIED TO SUIT ROOF EAVES, VERGE PITCH OR CORNER CONDITION
- ALL PANEL SIZES ARE INDICATED C/C
- ALL PANEL SIZES TO BE VERIFIED AND DETERMINED BY SPECIALIST SUBCONTRACTOR



**01 DETAILED ELEVATION AA**  
 1: 100



**02 DETAILED ELEVATION BB**  
 1: 100

- KEY**
- CB DENOTES CAVITY BARRIER TO FACING MASONRY CONSTRUCTION F30/180A & 180B
  - CB DENOTES CAVITY BARRIER P12/330A BETWEEN BLOCKWORK & COMPOSITE CLADDING
  - CB CAVITY BARRIER FORMED BY A2 CP BOARD
  - CB DENOTES CAVITY BARRIER FORMED BY PLASTERBOARD, INTERNAL PARTITION LINING / OR STEEL COLUMN, RESIDUAL GAP SEALED (WITH P12/331A) REFER TO DETAILS
  - CB DENOTES CAVITY BARRIER TO CLOSE PERIMETER OF STRUCTURAL DECK P12/365A
  - CB DENOTES CAVITY BARRIER TO CLOSE EAVES OF SPORTS HALL STRUCTURAL DECK P12/365A & 365B
  - DPC DENOTES DAMP PROOF COURSE F30/345A
  - BMJ FACING BRICKWORK MOVEMENT JOINT
  - RMJ RENDER MOVEMENT JOINT M12/210A
  - RSJ RENDER SLIP JOINT TO SFS DEFLECTION JOINTS M12/210A
  - PERISCOPE VENTILATOR WITH AIR BRICK F30180A. REFER TO APPROVED DOCUMENT C STRATEGY PWSR-HKS-ZZ-TR-A-3301
  - EX DENOTES EXTERNAL LUMINAIRE, REFER TO MEP DWGS
  - CCTV DENOTES EXTERNAL CCTV MOUNT REFER TO MEP DWGS
  - PLYWOOD PATRESS REQUIRED FOR ALL EXTERNAL LUMINAIRES, CCTV AND RWP FIXINGS TO SFS

**KEY PLAN**



- (i) NB: DETAILED ELEVATIONS INDICATE CAVITY BARRIERS ONLY. REFER TO DETAILS FOR FIRE STOPPING REQUIREMENTS

**PROJECT STAGE**  
**RIBA STAGE 5**

**REVISION HISTORY**

REV	DATE	DESCRIPTION
C03	18/04/24	Elevations revised following building coordinates adjustment. Bird Box Types added to elevations for submission to the Local Authority to discharge Planning Condition. Window levels added to first floor following coordination with KGM and CCE regarding cladding falls.
C02	09/01/24	Air Bricks & Movement Joints aligned to match Setting Out Plans
C01	05/12/23	Cavity barrier to top of full fill cavity wall construction omitted on basis of meeting BS103 without fire store parapet reduced following agreed VE. Cavity barriers omitted to first floor windows where internal fixings have been removed resulting in no cavities to close. Cavity close to Sports Hall and Rectad Roof structural deck omitted to verge as no longer intersects with envelope cavity. Sports Hall panel types amended following structural grid coordination. Cavity barrier in fill to structural deck along gridline S and R omitted as now closed by virtue of the independent firing head
CP01	07/06/23	Issued for Contractor's Proposals
P01	15/05/23	First Issue

**DRAWING SUITABILITY CODE**  
 A4 - FOR CONSTRUCTION

SCALE @ A1 DRAWN BY CHECKED BY DATE  
 1: 100 RMo PSt 18/04/24

**HKS PROJECT NUMBER**  
**55256.002**

**PROJECT NAME**  
**Prince William School Sports Hall**

**DRAWING NAME**  
**PROPOSED DETAILED ELEVATIONS - SHEET 01**

**DRAWING NUMBER**  
**PWSR-HKS-AA-ZZ-D-A-2011**

**REVISION STATUS**  
**CONSTRUCTION**

**REVISION**  
**C.03**

