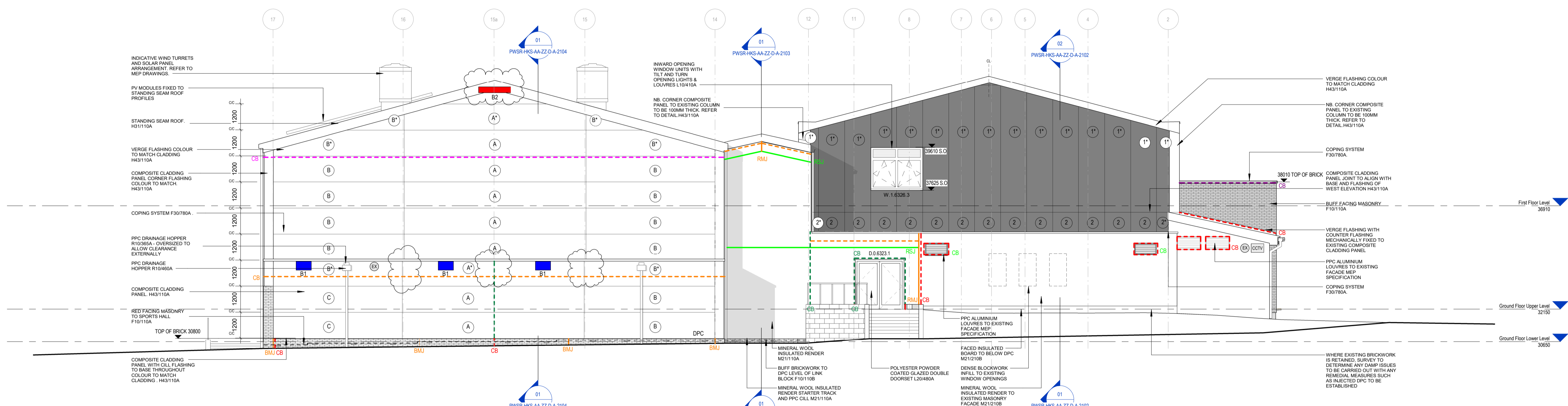
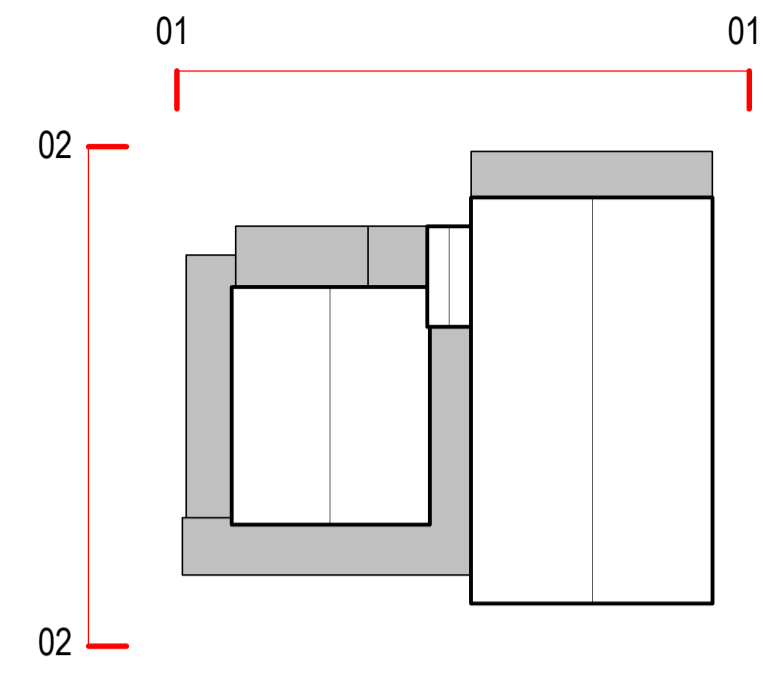
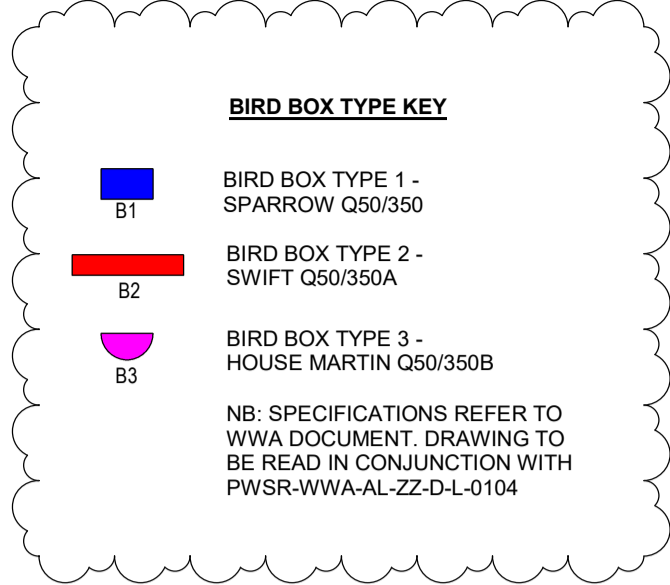


ALL DRAWINGS ARE BASED UPON SITE INFORMATION SUPPLIED BY THIRD PARTIES & AS SUCH THEIR ACCURACY CANNOT BE GUARANTEED BY HKS. HKS ACCEPTS NO LIABILITY FOR ANY DISCREPANCY FOUND IN THE DRAWING INFORMATION PROVIDED FOR THE PREPARATION OF THESE DRAWINGS. ALL INFORMATION RECEIVED BY HKS IS CONSIDERED TO BE A TRUE AND ACCURATE RECORD OF THE EXISTING BUILDING.

IT IS THE CONTRACTOR'S RESPONSIBILITY TO VERIFY THE EXISTING CONSTRUCTION AND ALL DIMENSIONS ON SITE.

- COMPOSITE CLADDING PANEL KEY - LAID HORIZONTALLY**
- (A) COMPOSITE CLADDING PANEL 1200 X 8385
 - (B) COMPOSITE CLADDING PANEL 1200 X 6450
 - (C) COMPOSITE CLADDING PANEL 1200 X 6000
 - (D) COMPOSITE CLADDING PANEL 1200 X 4970
 - (E) COMPOSITE CLADDING PANEL 1200 X 4540
 - (F) COMPOSITE CLADDING PANEL 1200 X 4175
 - (G) COMPOSITE CLADDING PANEL 1200 X 4440
 - (H) COMPOSITE CLADDING PANEL 1200 X 5080
 - (J) COMPOSITE CLADDING PANEL 1200 X 4075
 - (K) COMPOSITE CLADDING PANEL 1200 X 2950
 - (L) COMPOSITE CLADDING PANEL 1200 X 2022
 - (M) COMPOSITE CLADDING PANEL 1200 X 2375
 - (N) COMPOSITE CLADDING PANEL 1200 X 2630
- COMPOSITE CLADDING PANEL KEY - LAID VERTICALLY**
- (1) COMPOSITE CLADDING PANEL 1200 x 6070
 - (2) COMPOSITE CLADDING PANEL 1200 x 1060
 - (3) COMPOSITE CLADDING PANEL 1200 x 4250
 - (4) COMPOSITE CLADDING PANEL 1200 x 3760
 - (5) COMPOSITE CLADDING PANEL 1200 x 1300
 - (6) COMPOSITE CLADDING PANEL 1200 x 600
 - (7) COMPOSITE CLADDING PANEL 1200 x 5670
- (X) DENOTES PANEL MODULE OF THE RELEVANT LETTER MODIFIED TO SUIT ROOF EAVES, VERGE PITCH OR CORNER CONDITION
- ALL PANEL SIZES ARE INDICATED C/C
- ALL PANEL SIZES TO BE VERIFIED AND DETERMINED BY SPECIALIST SUBCONTRACTOR



01 DETAILED ELEVATION CC
 1: 100

- KEY**
- CB DENOTES CAVITY BARRIER TO FACING MASONRY CONSTRUCTION F30/180A & 180B
 - CB DENOTES CAVITY BARRIER P12/330A BETWEEN BLOCKWORK & COMPOSITE CLADDING
 - CB CAVITY BARRIER FORMED BY A2 CP BOARD P12/845A TO HEAD OF FACING MASONRY CONSTRUCTION
 - CB DENOTES CAVITY BARRIER FORMED BY PLASTERBOARD, INTERNAL PARTITION LINING OR STEEL COLUMN. RESIDUAL GAP SEALED WITH P12/331A. REFER TO DETAILS
 - CB DENOTES CAVITY BARRIER TO CLOSE PERIMETER OF STRUCTURAL DECK P12/365A
 - CB DENOTES CAVITY BARRIER TO CLOSE EAVES OF SPORTS HALL STRUCTURAL DECK P12/365A & 365B
 - DPC DENOTES DAMP PROOF COURSE F30/345A
 - BMJ FACING BRICKWORK MOVEMENT JOINT
 - RMJ RENDER MOVEMENT JOINT M12/210A
 - RSJ RENDER SLIP JOINT TO SFS DEFLECTION JOINTS M12/210A
 - PERISCOPE VENTILATOR WITH AIR BRICK F30/160A. REFER TO APPROVED DOCUMENT C STRATEGY PWSR-HKS-AA-ZZ-ZZ-TR-A-3301
 - (E) DENOTES EXTERNAL LUMINAIRE. REFER TO MEP DWGS
 - (CCTV) DENOTES EXTERNAL CCTV MOUNT REFER TO MEP DWGS
 - PLYWOOD PATFRESS REQUIRED FOR ALL EXTERNAL LUMINAIRES, CCTV AND RWP FIXINGS TO SFS

KEY PLAN

(i) NB: DETAILED ELEVATIONS INDICATE CAVITY BARRIERS ONLY. REFER TO DETAILS FOR FIRE STOPPING REQUIREMENTS

PROJECT STAGE
RIBA STAGE 5

REVISION HISTORY

REV	DATE	DESCRIPTION
C03	18/04/24	Elevations revised following building coordinates adjustment. Bird Box Types added to elevations for submission to the Local Authority to discharge Planning Condition. Window levels added to first floor following coordination with KGM and CCE regarding cladding rails.
C02	09/01/24	Air Bricks & Movement Joints aligned to match Setting Out Plans
C01	15/12/23	Cavity Barrier to top of full fill cavity wall construction omitted on basis of meeting BB100 without PE Store parapet reduced following agreed VE and adjacent retaining wall reconfigured with insulated render extended. Cavity barriers omitted to first floor windows where internal linings have been removed resulting in no cavities to close. Cavity closer to Sports Hall and Reclad Roof structural deck omitted to verge as no longer interconnects with envelope cavity. Cavity barrier left to structural deck along gridline S and R omitted as now closed by virtue of an independent lining head. Cavity barriers added to louvers in existing masonry following opening up works cavity construction confirmed. Render slip joint location amended following coordination of steelwork.

DRAWING SUITABILITY CODE
 A4 - FOR CONSTRUCTION

SCALE @ A1 DRAWN BY CHECKED BY DATE
 1: 100 RMo PSt 18/04/24

HKS PROJECT NUMBER
55256.002

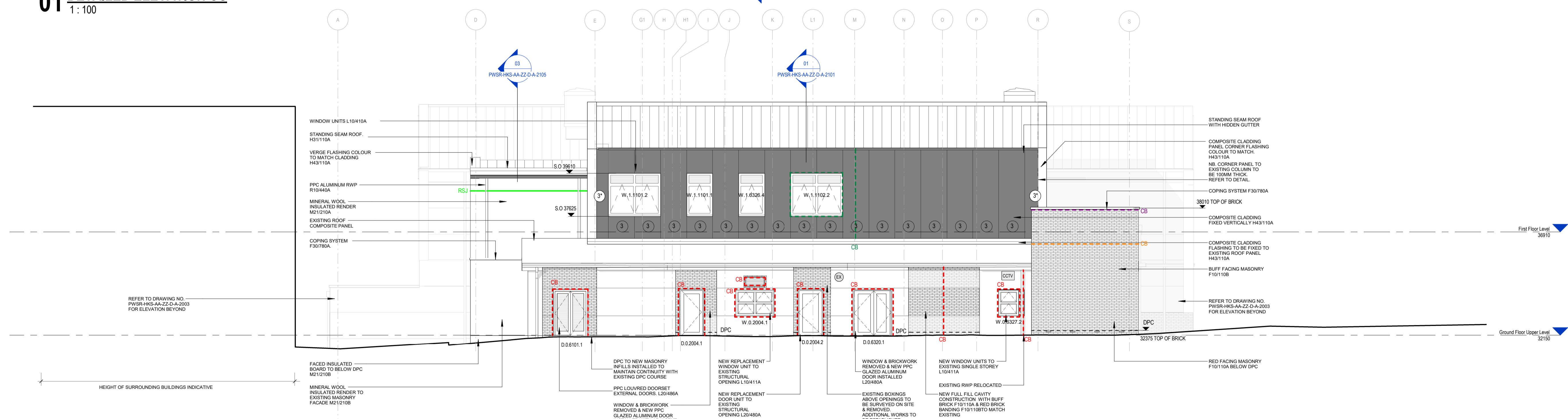
PROJECT NAME
Prince William School Sports Hall

DRAWING NAME
PROPOSED DETAILED ELEVATIONS - SHEET 02

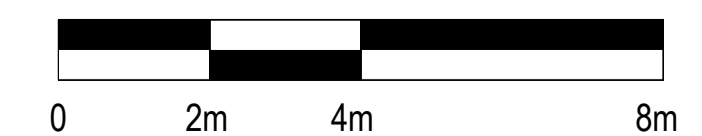
DRAWING NUMBER
PWSR-HKS-AA-ZZ-D-A-2012

REVISION STATUS
CONSTRUCTION

REVISION
C.03



02 DETAILED ELEVATION DD
 1: 100



SCALE: 1:100