

New Ground Floor Specification
 The existing earth floors are to be dug up to a level necessary to accommodate the following insulated floor construction to meet min U value required of 0.13 W/m²K. P/A Ratio 0.1
 Solid ground floor to consist of 150mm consolidated well-rammed hardcore. Blinded with 50mm and blinding. Provide 100mm ST2 or GAC2 ground heating slab consistent to BS 8050-2 over a 1200 gauge polythene DPM. DPM to be lapped as with DPC in walls. Floor to be insulated over slab and DPM with min 120mm thick Kappan Koofthem insulation.
 25mm insulation to continue around floor perimeter to avoid thermal bridging. A VCL should be laid over the insulation boards and turned up 100mm at room perimeters below the skirting. All joints to be lapped Floor finish T&G laid provisionally by in-situ stone tiles - re-sue existing where possible.

Some existing ceilings were finished with modern plasterboard and skan and finished with paint. However, lath and plaster also remains in places. These areas will be identified to work proceed and any repairs or making good that is required will be carried out carefully in matching materials. The work will be undertaken by a suitably experienced contractor.

REVISIONS
 1. Update of drawings to reflect the above changes and amendments to the specification.
 2. Update of drawings to reflect the above changes and amendments to the specification.
 3. Update of drawings to reflect the above changes and amendments to the specification.
 4. Update of drawings to reflect the above changes and amendments to the specification.
 5. Update of drawings to reflect the above changes and amendments to the specification.
 6. Update of drawings to reflect the above changes and amendments to the specification.
 7. Update of drawings to reflect the above changes and amendments to the specification.
 8. Update of drawings to reflect the above changes and amendments to the specification.
 9. Update of drawings to reflect the above changes and amendments to the specification.
 10. Update of drawings to reflect the above changes and amendments to the specification.
 11. Update of drawings to reflect the above changes and amendments to the specification.
 12. Update of drawings to reflect the above changes and amendments to the specification.
 13. Update of drawings to reflect the above changes and amendments to the specification.
 14. Update of drawings to reflect the above changes and amendments to the specification.
 15. Update of drawings to reflect the above changes and amendments to the specification.
 16. Update of drawings to reflect the above changes and amendments to the specification.
 17. Update of drawings to reflect the above changes and amendments to the specification.
 18. Update of drawings to reflect the above changes and amendments to the specification.
 19. Update of drawings to reflect the above changes and amendments to the specification.
 20. Update of drawings to reflect the above changes and amendments to the specification.
 21. Update of drawings to reflect the above changes and amendments to the specification.
 22. Update of drawings to reflect the above changes and amendments to the specification.
 23. Update of drawings to reflect the above changes and amendments to the specification.
 24. Update of drawings to reflect the above changes and amendments to the specification.
 25. Update of drawings to reflect the above changes and amendments to the specification.
 26. Update of drawings to reflect the above changes and amendments to the specification.
 27. Update of drawings to reflect the above changes and amendments to the specification.
 28. Update of drawings to reflect the above changes and amendments to the specification.
 29. Update of drawings to reflect the above changes and amendments to the specification.
 30. Update of drawings to reflect the above changes and amendments to the specification.
 31. Update of drawings to reflect the above changes and amendments to the specification.
 32. Update of drawings to reflect the above changes and amendments to the specification.
 33. Update of drawings to reflect the above changes and amendments to the specification.
 34. Update of drawings to reflect the above changes and amendments to the specification.
 35. Update of drawings to reflect the above changes and amendments to the specification.
 36. Update of drawings to reflect the above changes and amendments to the specification.
 37. Update of drawings to reflect the above changes and amendments to the specification.
 38. Update of drawings to reflect the above changes and amendments to the specification.
 39. Update of drawings to reflect the above changes and amendments to the specification.
 40. Update of drawings to reflect the above changes and amendments to the specification.
 41. Update of drawings to reflect the above changes and amendments to the specification.
 42. Update of drawings to reflect the above changes and amendments to the specification.
 43. Update of drawings to reflect the above changes and amendments to the specification.
 44. Update of drawings to reflect the above changes and amendments to the specification.
 45. Update of drawings to reflect the above changes and amendments to the specification.
 46. Update of drawings to reflect the above changes and amendments to the specification.
 47. Update of drawings to reflect the above changes and amendments to the specification.
 48. Update of drawings to reflect the above changes and amendments to the specification.
 49. Update of drawings to reflect the above changes and amendments to the specification.
 50. Update of drawings to reflect the above changes and amendments to the specification.
 51. Update of drawings to reflect the above changes and amendments to the specification.
 52. Update of drawings to reflect the above changes and amendments to the specification.
 53. Update of drawings to reflect the above changes and amendments to the specification.
 54. Update of drawings to reflect the above changes and amendments to the specification.
 55. Update of drawings to reflect the above changes and amendments to the specification.
 56. Update of drawings to reflect the above changes and amendments to the specification.
 57. Update of drawings to reflect the above changes and amendments to the specification.
 58. Update of drawings to reflect the above changes and amendments to the specification.
 59. Update of drawings to reflect the above changes and amendments to the specification.
 60. Update of drawings to reflect the above changes and amendments to the specification.
 61. Update of drawings to reflect the above changes and amendments to the specification.
 62. Update of drawings to reflect the above changes and amendments to the specification.
 63. Update of drawings to reflect the above changes and amendments to the specification.
 64. Update of drawings to reflect the above changes and amendments to the specification.
 65. Update of drawings to reflect the above changes and amendments to the specification.
 66. Update of drawings to reflect the above changes and amendments to the specification.
 67. Update of drawings to reflect the above changes and amendments to the specification.
 68. Update of drawings to reflect the above changes and amendments to the specification.
 69. Update of drawings to reflect the above changes and amendments to the specification.
 70. Update of drawings to reflect the above changes and amendments to the specification.
 71. Update of drawings to reflect the above changes and amendments to the specification.
 72. Update of drawings to reflect the above changes and amendments to the specification.
 73. Update of drawings to reflect the above changes and amendments to the specification.
 74. Update of drawings to reflect the above changes and amendments to the specification.
 75. Update of drawings to reflect the above changes and amendments to the specification.
 76. Update of drawings to reflect the above changes and amendments to the specification.
 77. Update of drawings to reflect the above changes and amendments to the specification.
 78. Update of drawings to reflect the above changes and amendments to the specification.
 79. Update of drawings to reflect the above changes and amendments to the specification.
 80. Update of drawings to reflect the above changes and amendments to the specification.
 81. Update of drawings to reflect the above changes and amendments to the specification.
 82. Update of drawings to reflect the above changes and amendments to the specification.
 83. Update of drawings to reflect the above changes and amendments to the specification.
 84. Update of drawings to reflect the above changes and amendments to the specification.
 85. Update of drawings to reflect the above changes and amendments to the specification.
 86. Update of drawings to reflect the above changes and amendments to the specification.
 87. Update of drawings to reflect the above changes and amendments to the specification.
 88. Update of drawings to reflect the above changes and amendments to the specification.
 89. Update of drawings to reflect the above changes and amendments to the specification.
 90. Update of drawings to reflect the above changes and amendments to the specification.
 91. Update of drawings to reflect the above changes and amendments to the specification.
 92. Update of drawings to reflect the above changes and amendments to the specification.
 93. Update of drawings to reflect the above changes and amendments to the specification.
 94. Update of drawings to reflect the above changes and amendments to the specification.
 95. Update of drawings to reflect the above changes and amendments to the specification.
 96. Update of drawings to reflect the above changes and amendments to the specification.
 97. Update of drawings to reflect the above changes and amendments to the specification.
 98. Update of drawings to reflect the above changes and amendments to the specification.
 99. Update of drawings to reflect the above changes and amendments to the specification.
 100. Update of drawings to reflect the above changes and amendments to the specification.



Outbuilding Western Gable



OB corner



Outbuilding Rear Elevation



repair outbuilding stonework and re-point
 *No DPC to ex walling

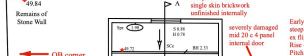


Outbuilding Southern Elevation

CONDITION 3 DISCHARGE APPLICATION DRAWING



Rear View



OB corner
Early-tiled 2ile single brickwork unfinished internally
seriously damaged mid 11 c 4 panel wing door
Early-tiled 2ile awing zinc distance on flight going - 1800mm Rise - 2400mm Push - circa 53 degrees



LRV5



CV2



CV3



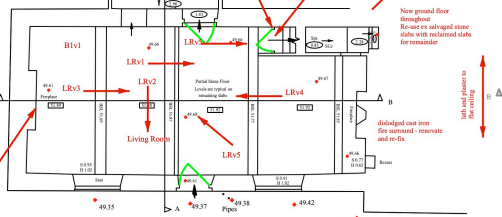
LRV2



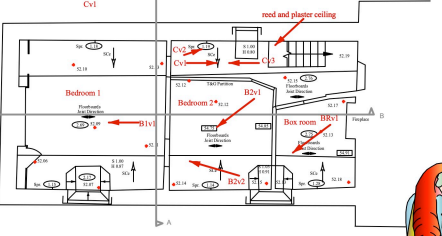
CV1



BRV1



GROUND FLOOR LAYOUT



FIST FLOOR LAYOUT



LRV3



Front Exterior



'Sundial' over front door



LRV1



BRV2



BRV1



LRV4



LRV5



BRV1

