



Type to enter text

Entrance Hall, West



Living Room West 1



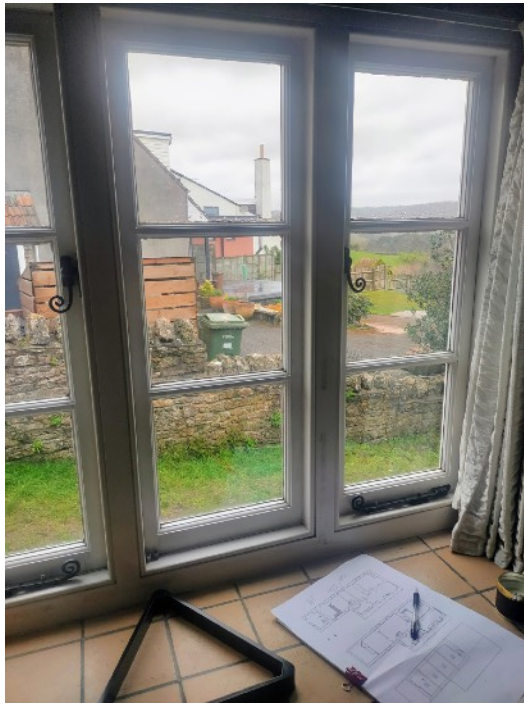
Living Room West 1, Detail
Caption



Living Room West 2
Original window



Living Room West 2
Detail



Dining Room Window 1



Dining Room Window 2



Living Room East



Boiler Room South



Bed 1 South



Bed 2



Bed 3
Note condensation



Second Floor
UPVC Window

The windows at Walnut Tree House are of 3 types!

1. Original - Living Room one facing window only.
2. Single Glazed Painted Wood 10-30 years old.
3. UPVC

The original window is of hardwood of unknown date.
It is not painted and incorporates an opening casement.

The replacement casements are all of the same type and presumably fitted at the same time, of builders merchant quality, single-glazed.

They incorporate no sealing so are not suitable for the exposed position of the house.

There are two double-glazed UPVC windows, both facing North, perhaps fitted when the replacement windows failed to keep out wind coming off the lake or the North.

The window we have designed is closely based on the original, with vacuum glass to provide the benefit of double-glazing in a narrow format.

They will incorporate weather seals and be finished in breathable white paint.

