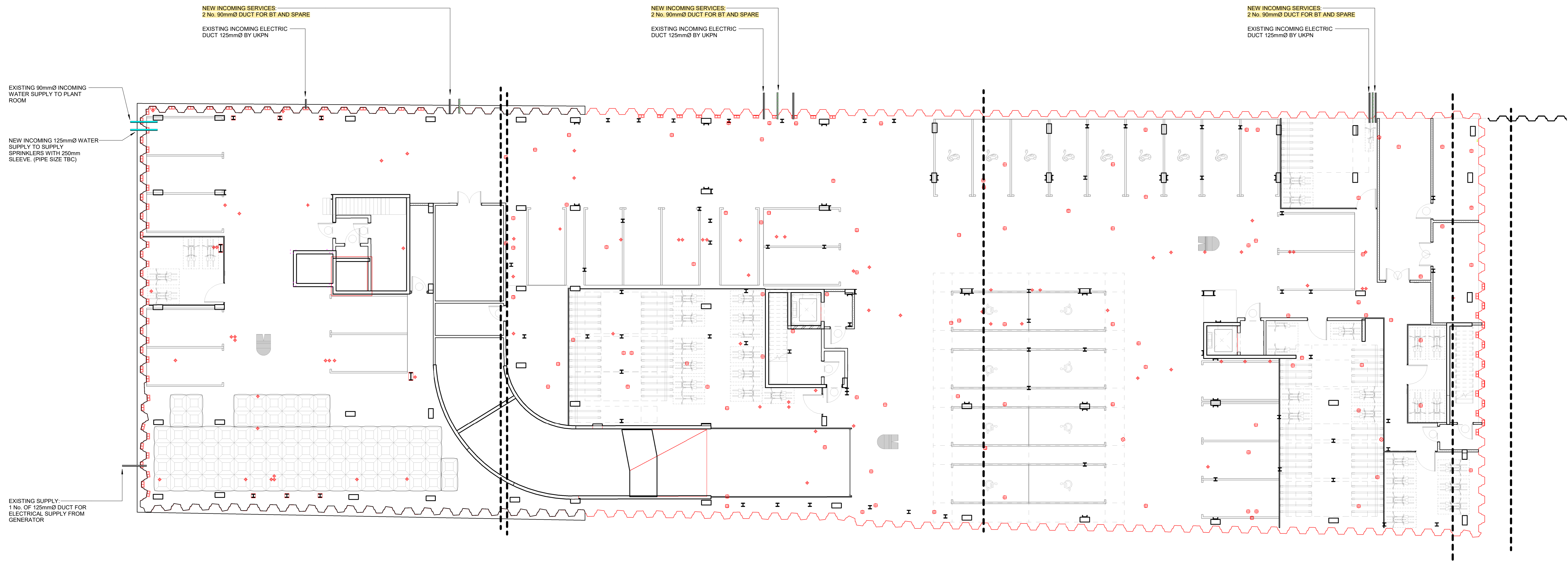


NOTES

- THIS DRAWING SHALL NOT BE RELIED UPON BY THE CONTRACTOR AS A WORKING DRAWING. THIS DRAWING HAS BEEN PRODUCED FOR DESIGN PURPOSES ONLY. ANY INSTALLATION BASED ON THIS DRAWING IS AT THE CONTRACTOR'S OWN RISK.
- DO NOT SCALE FROM THIS DRAWING.
- THIS DRAWING IS TO BE READ WITH APPLICABLE SERVICES SPECIFICATIONS, SCHEDULES AND SCHEMATIC DOCUMENTATION FOR FURTHER INFORMATION.

- NOTES:**
- CIVIL/STRUCTURAL ENGINEERS TO CO-ORDINATE THEIR BELOW GROUND DRAINAGE SERVICES AND FOR INSPECTION CHAMBERS IN LINE WITH THE INCOMING SERVICES LAYOUT FOR DUCTS AND OTHER SERVICES TO AVOID UNNECESSARY CLASHES.
  - ALL SERVICES TO RUN WITHIN THE COMBINED M&E SERVICES TRENCH WITH REQUIRED MINIMUM SEPARATION DISTANCE BETWEEN THEM.
  - ALL DIMENSIONS AND LEVELS TO BE CHECKED ON SITE PRIOR TO COMMENCEMENT. ANY DISCREPANCIES SHOULD BE NOTIFIED TO RELEVANT PARTIES.
  - THIS DRAWING IS TO BE READ IN CONJUNCTION WITH ANY RELEVANT ARCHITECTURAL AND CIVIL ENGINEERING DRAWINGS.
  - THE CONTRACTOR SHALL ENSURE ALL EXCAVATION WORKS ARE IN LINE WITH THE HEALTH & SAFETY EXECUTIVE GUIDANCE DOCUMENT HS07 AVOIDING DANGER FROM UNDERGROUND SERVICES.
  - THE CONTRACTOR SHALL ENSURE THAT THE FINAL LAYOUT OF THE SERVICES ARE IN ACCORDANCE WITH THE NJUG GUIDELINES ON THE POSITIONING AND COLOUR CODING OF UNDERGROUND UTILITY APPARATUS.
  - BURED DEPTHS ARE TAKEN FROM NJUG GUIDELINES.
  - ALL DUCTS ARE TO BE 100mmØ UNLESS SPECIFIED OTHERWISE.
  - ALL SERVICES TO BE INSTALLED AS PER SUPPLIER'S DESIGN i.e. TIG, OPENREACH, HYPEROPTIC, THAMES WATER, TOTAL UTILITY GAS etc.
  - ALL MAINS WATER PIPE IN GROUND TO BE INSTALLED IN UNPEE BARBER PIPE.
  - ALL WATER PIPEWORK INSTALLED TO BE CARRIED OUT BY (WRAS) APPROVED CONTRACTOR.
  - FIRE HYDRANT LOCATIONS TO BE ADVISED BY THAMES WATER.
  - WHERE BENDS OF GREATER THAN 30° OCCUR, ACCESS MANHOLES ARE TO BE INSTALLED FOR EASE OF CABLE DISTRIBUTION.
  - EXTERNAL LIGHTING SUBJECT TO APPROVED SPECIALIST DESIGN.
  - FOR SUB STATION DETAIL REFER TO R&D NETWORK DESIGN DRAWING No. 8995/0101.
  - EXTERNAL ELECTRICAL METER BOXES AND HOCKEY STICK TO BE FIRE RATED FOR INDEPENDANT SERVICE TERMINATION TO COMPLY WITH NERC GUIDELINES.
  - 300mm MINIMUM SEGREGATION BETWEEN PROPOSED & EXISTING ASSETS TO BE MAINTAINED THROUGHOUT CABLE ROUTES. GROUND WORKERS TO ENSURE THIS IS TAKEN ON BOARD DURING EXCAVATION & LAYING OF DUCTS AND OTHER SERVICES BELOW GROUND.



BASEMENT - INCOMING SERVICES LAYOUT  
1:100

Rev	Date	RVT	Chkd	Description
T04	17.04.24	SM	SK	UPDATED TO NEW LAYOUT
T03	02.02.24	SM	SK	REVISED TENDER ISSUE
T02	19.01.24	SM	SK	UPDATED TENDER ISSUE
T01	11.01.24	SM	SK	TENDER ISSUE

Status Description

S2 FOR INFORMATION

**MWL**  
Mendick Wating Limited  
Lymhouse Studios, 30/31 Lymhouse Street, London NW1 0EE  
Tel: 020 8446 9698  
E-mail: enquiries@mwlg-group.com

Client  
**BLUE LEAF CONSULTANTS**

Architect  
**ALAN CAMP ARCHITECTS**

Project  
**SOLOMONS PASSAGE  
PECKHAM**

Drawing  
**BASEMENT PLAN - SITE PLAN  
INCOMING SERVICES LAYOUT**

Scale	Size	Engineer	Date
1:100	A0	SK	MAY '23

Drawing No.	Revision
3301-MWL-XX-B1-DR-MEP-401010	T04

