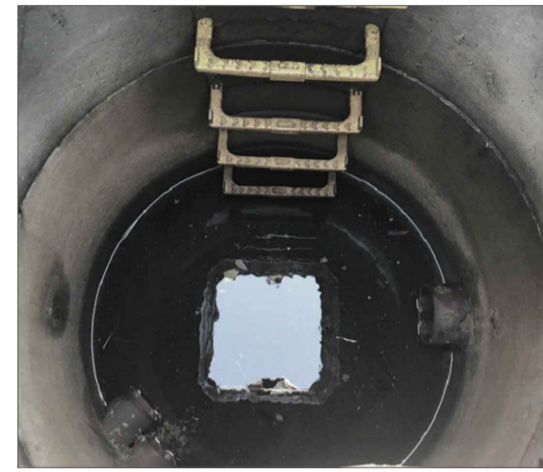


1. SURFACE WATER MANHOLE MH01



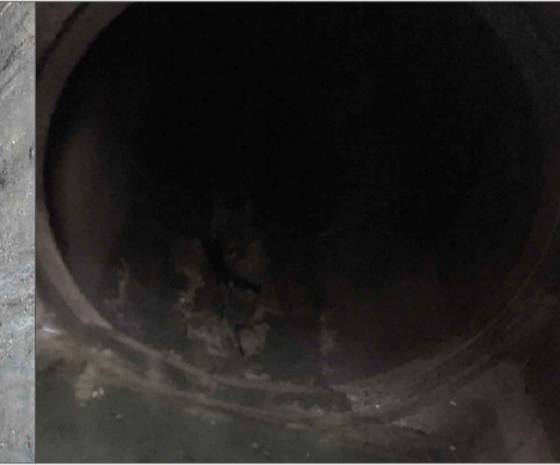
2. SURFACE WATER MANHOLE MH02



3. SURFACE WATER MANHOLE MH03



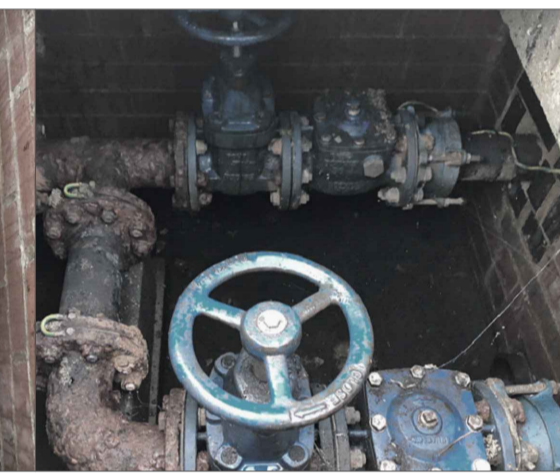
4. SURFACE WATER SEWER (CIRCA 1200M Ø)



5. PUMP STATION EQUIPMENT



6. PUMP STATION EQUIPMENT



7. PUMP STATION LIFTING EQUIPMENT



8. PUMPING STATION CUBICLE



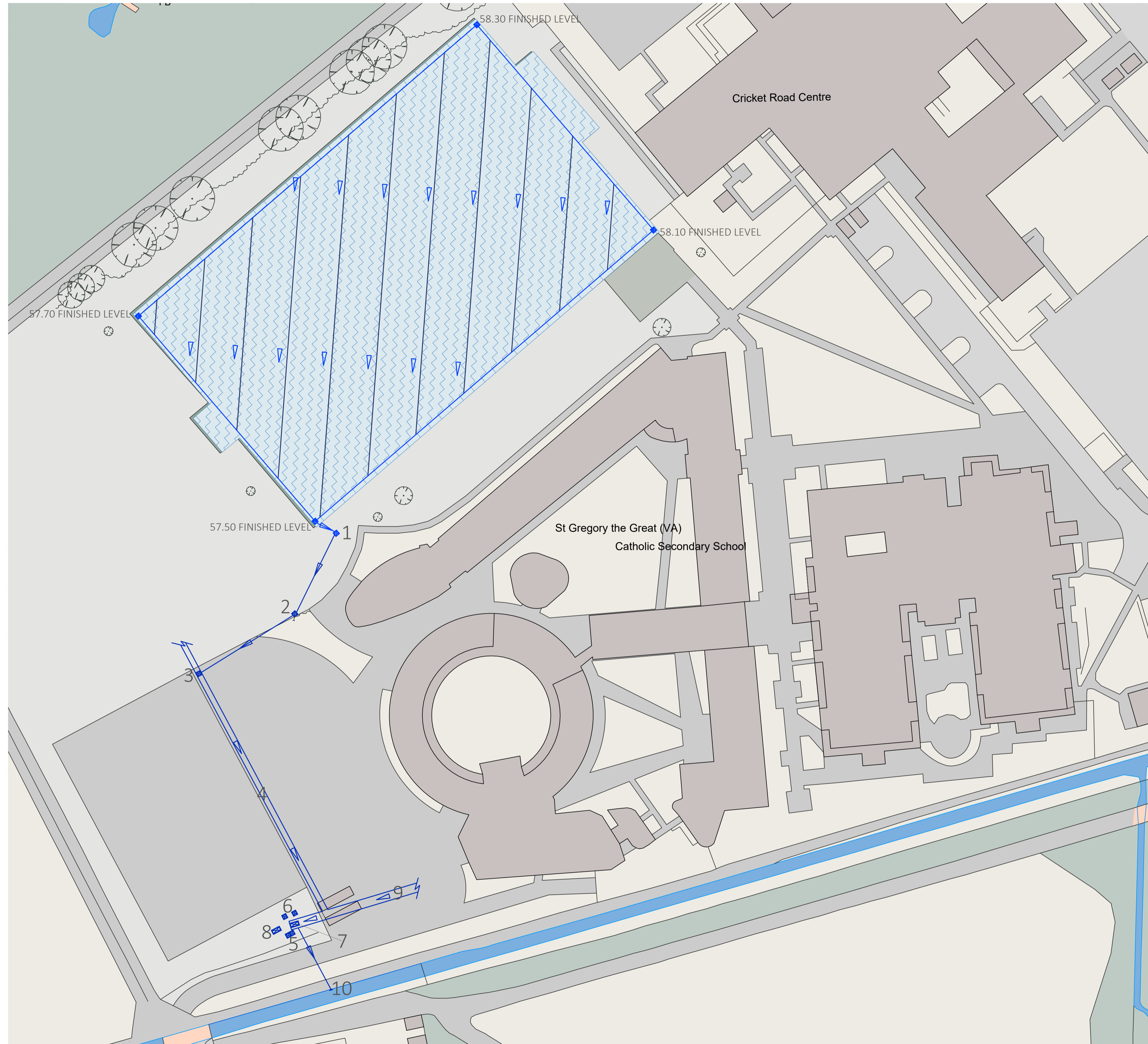
9. SURFACE WATER SEWER (CIRCA 2000M Ø)








10. SURFACE WATER OUTFALL TO ADJACENT CULVERTED WATER COURSE



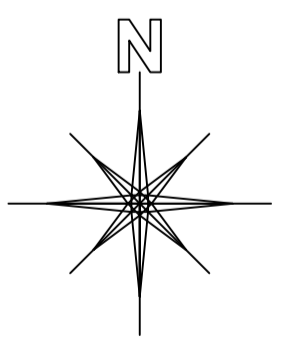
EXISTING AGP SURFACE WATER DRAINAGE LAYOUT



CHECK ALL DIMENSIONS PRIOR TO COMMENCEMENT OF WORK
 NO GUARANTEE CAN BE GIVEN THAT ALL SERVICES HAVE BEEN SHOWN ON THE DRAWING
 NO GUARANTEE CAN BE GIVEN TO THE ACCURACY AND COMPLETENESS OF ANY SERVICE PROVIDER RECORD INFORMATION SHOWN IN THIS DRAWING AND NO LIABILITY WILL BE ACCEPTED FOR ANY LOSSES THAT ARISE DUE TO A LACK OF ACCURACY IN ANY SERVICE PROVIDER RECORD INFORMATION
 RELEVANT SERVICE DRAWINGS SHOULD BE OBTAINED FROM APPROPRIATE SERVICE PROVIDERS AND USED IN CONJUNCTION WITH THIS DRAWING
 REFERENCE SHOULD ALSO BE MADE TO HISTORICAL PLANS AND AS BUILT DRAWINGS
 THIS DRAWING IS COPYRIGHT TO LABOSPORT LTD

-  80MM Ø UPVC PERFORATED CORRUGATED PLASTIC LATERAL DRAINAGE PIPES LAID INTO LINED, GRAVEL-FILLED TRENCHES
-  150MM Ø UPVC PERFORATED CORRUGATED PLASTIC CARRIER DRAINAGE PIPES LAID INTO LINED, GRAVEL-FILLED TRENCHES
- CONNECT CARRIER PIPES TO NEW SILT-TRAP / INSPECTION CHAMBERS (ICS) WITH PROPRIETARY RIGID JUNCTIONS AT THE POINT OF ENTRY
-  600MM LONG X 600MM WIDE X 1000MM DEEP PRE-CAST CONCRETE (PCC) SILT-TRAP / INSPECTION CHAMBERS (ICS), FOUNDED ONTO A MASS CONCRETE BEDDING (GENO OR STANDARD MIX ST1 OR SIMILAR AS RECOMMENDED)
- WHERE REQUIRED, CONNECT CARRIER PIPES TOGETHER WITH PROPRIETARY RIGID JUNCTIONS AT THE POINT OF INTERSECTION
-  CONNECTION TO EXISTING LOCAL SURFACE WATER DRAINAGE NETWORK
-  DRAINED AGP AREA (6533M2)

ARTIFICIAL GRASS PITCH CONSTRUCTION:
 18MM SAND-FILLED SYNTHETIC TURF
 OVER
 20MM SHOCK-PAD
 OVER
 300MM TO 350MM LIMESTONE GRAVEL
 OVER
 GEOTEXTILE LAYER
 OVER
 SUB-GRADE OF SILTY AND CLAYEY GRAVELLY SAND ACROSS THE AGP EXCEPT FOR THE SOUTH WESTERN END WHERE SUB-GRADE COMPRISED A FIRM BROWN GRAVELLY CLAY MADE GROUND AND OUTSIDE THE AGP, MADE GROUND WAS ENCOUNTERED AS A LIGHT BROWN SILTY GRAVELLY SAND AND A FIRM DARK BROWN GRAVELLY CLAY TO >1.2M DEPTH



LABOSPORT LTD
 Unit 3, Aerial Way, Hucculstall, Nottinghamshire, NG15 6DW
 +44 (0)15 968 3988
 www.labosport.com
 info@labosport.co.uk

AUTHOR: ST GREGORY THE GREAT CATHOLIC SCHOOL
 CLIENT: ST GREGORY THE GREAT CATHOLIC SCHOOL
 PROJECT: ARTIFICIAL GRASS PITCH (AGP) REFURBISHMENT
 DRAWING: EXISTING AGP SURFACE WATER DRAINAGE LAYOUT

PLANNING	TB	00
LSUK 19-0622	02.01.2020	19-0622 BM25583 0537 06
DATE	SCALE	DATE
A1	1:500	

