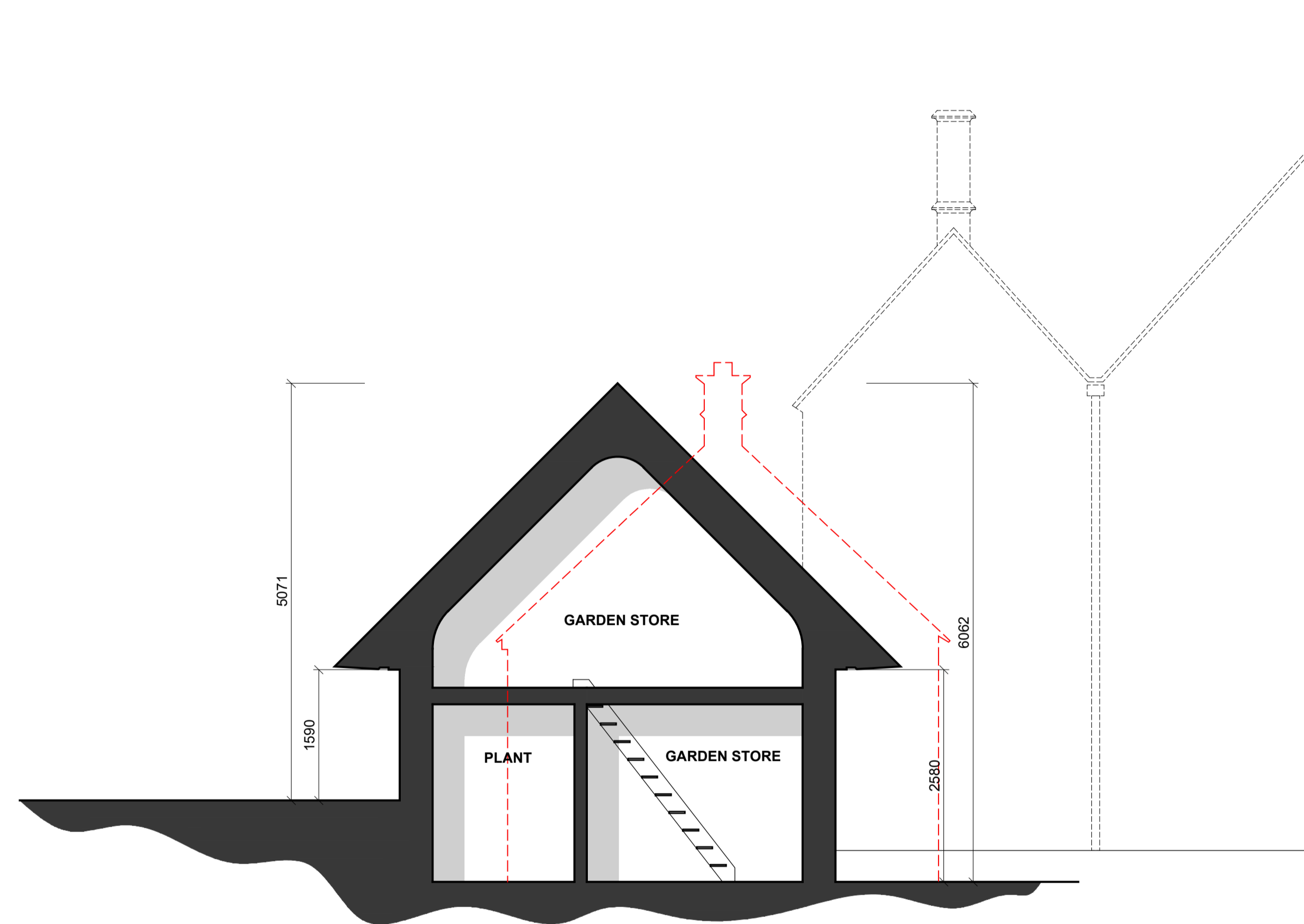
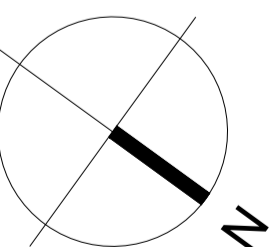
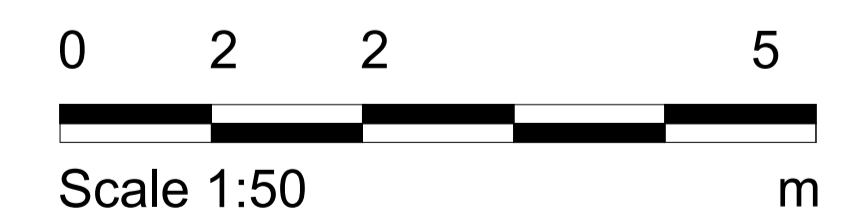
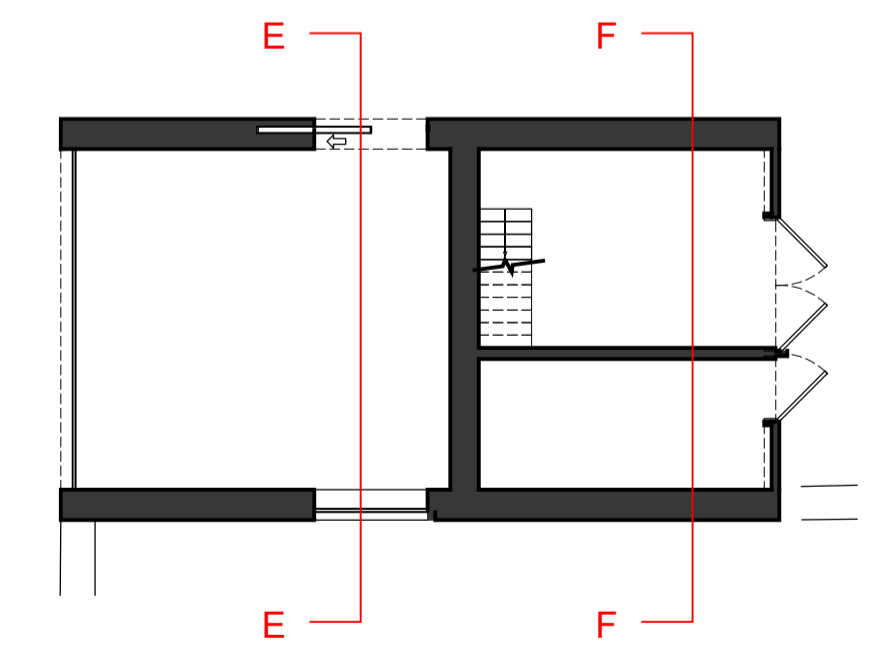


01 Section EE
2100 As Proposed



02 Section FF
2100 As Proposed



Notes

- Any dwg format drawing is to be read in conjunction with and at the scale of the accompanying pdf.
- Where colours other than black or grey are used, the drawing must be plotted in colour.
- For status 'C' (Construction) drawings all dimensions are to be checked on site by the contractor, scaling is for Local Authority purposes only.
- Unless otherwise indicated, all dimensions are in millimeters.
- All information on this drawing is to be read in conjunction with the relevant Donald Insall Associates specification and trade contractors' drawings and information by specialists.
- In the event of any discrepancy, please contact us immediately.
- This drawing may contain survey information by others and is to be used solely for the purposes for which it was issued.
- These are uncontrolled documents issued for information purposes only. If you have any queries regarding the drawings, please contact DIA immediately.
- Please note DIA cannot be held responsible for any errors arising from changes made to an uncontrolled dwg file.

Drawing Status				
F	Feasibility			
S	Sketch Design			
P	Planning			
B	Building Control			
D	Developed Design			
M	Measurement			
T	Tender			
C	Construction			
R	Record			

Rev	Date	Dwn	Auth	Revision
1	21-03-24	CJS	HEP	Amended to Client Comments
0	13-03-24	CJS	HEP	Initial Issue

Donald Insall Associates
Chartered Architects and Historic Building Consultants

The Painted Room, 118 High Street,
Oxford, OX1 4BX
(+44) 01865 520170
oxford@insall-architects.co.uk

The Dower House Library, Chastelton

Project	OX.DHL.01	No	2100
Scale (A1)	1:50	Status	3P
		Revision	1

Sections
As Proposed