

Summercroft Primary School, Bishop's Stortford CM23 5BJ



Planning Compliance Report
Report 27538.PCR.01 Rev.B

SES Mechanical Services Limited
Telford Way, Severalls Business Park
Colchester, Essex

Report 27538.PCR.01			
Revision History			
First Issue Date: 01/12/2023			
A	05/02/2024 – Revised following a plant specification change.	D	
B	14/02/2024 – Revised following changes to the installation location.	E	
C		F	
Written by:		Checked by:	
Harry Coles AMIOA Assistant Acoustic Consultant		Gonçalo Lemos MIEEnvSc MIOA Principal Acoustic Consultant	
		Approved by:	
		Jacob Tyler MIOA Senior Acoustic Consultant	
Disclaimer			
<p>KP Acoustics Ltd. has used reasonable skill and care to complete this technical document, within the terms of its brief and contract with the resources devoted to it by agreement with the client. We disclaim any responsibility to the client and others in respect of any matters outside the stated scope. This report is confidential to the client and we accept no responsibility to third parties to whom this report, or any part thereof, is made known. KP Acoustics Ltd. accepts no responsibility for data provided by other bodies and no legal liability arising from the use by other persons of data or opinions contained in this report.</p> <p>KP Acoustics Ltd. 2023</p>			

Contents

1.0	INTRODUCTION	1
2.0	SITE SURVEYS	1
2.1	Site Description	1
2.2	Environmental Noise Survey Procedure	2
2.3	Equipment.....	3
3.0	RESULTS.....	3
4.0	NOISE ASSESSMENT GUIDANCE.....	4
4.1	BS4142: 2014 ‘ <i>Methods for rating and assessing industrial and commercial sound</i> ’	4
4.2	Local Authority Guidance.....	5
4.3	Noise Emissions Criterion	6
5.0	NOISE IMPACT ASSESSMENT	6
5.1	Proposed Plant Installations	6
5.2	Calculations	6
6.0	NOISE CONTROL MEASURES.....	7
6.1	Proposed Fencing.....	7
6.2	Anti-Vibration Mounting Strategy	7
7.0	CONCLUSION.....	8

List of Attachments

27538.TH1	Environmental Noise Time History
27538.Daytime L90.TH1	Statistical analysis for representative daytime L_{A90}
27538.Night-time L90.TH1	Statistical analysis for representative night-time L_{A90}
Appendix A	Glossary of Acoustics Terminology
Appendix B	Acoustic Calculations
Appendix C	Anti-Vibration Mounting Specification Reference Document

1.0 INTRODUCTION

KP Acoustics Ltd has been commissioned by SES Mechanical Services Limited, Telford Way, Severalls Business Park, Colchester, Essex to undertake a noise impact assessment of a proposed plant unit installation serving the building at Summercroft Primary School, Bishop's Stortford, CM23 5BJ.

A 24-hour environmental noise survey has been undertaken on site in order to prepare a noise impact assessment in accordance with BS4142:2014 *'Method for rating and assessing industrial and commercial sound'* as part of the planning requirements of East Hearts District Council.

This report presents the methodology and results from the environmental survey, followed by calculations in accordance with BS4142 to provide an indication as to the likelihood of the noise emissions from the proposed plant unit installation having an adverse impact on the closest noise sensitive receiver. Mitigation measures will be outlined as appropriate.

2.0 SITE SURVEYS

2.1 Site Description

As shown in Figure 2.1, the site is bounded by playing fields to east, commercial properties to the south and residential properties to the north and west.

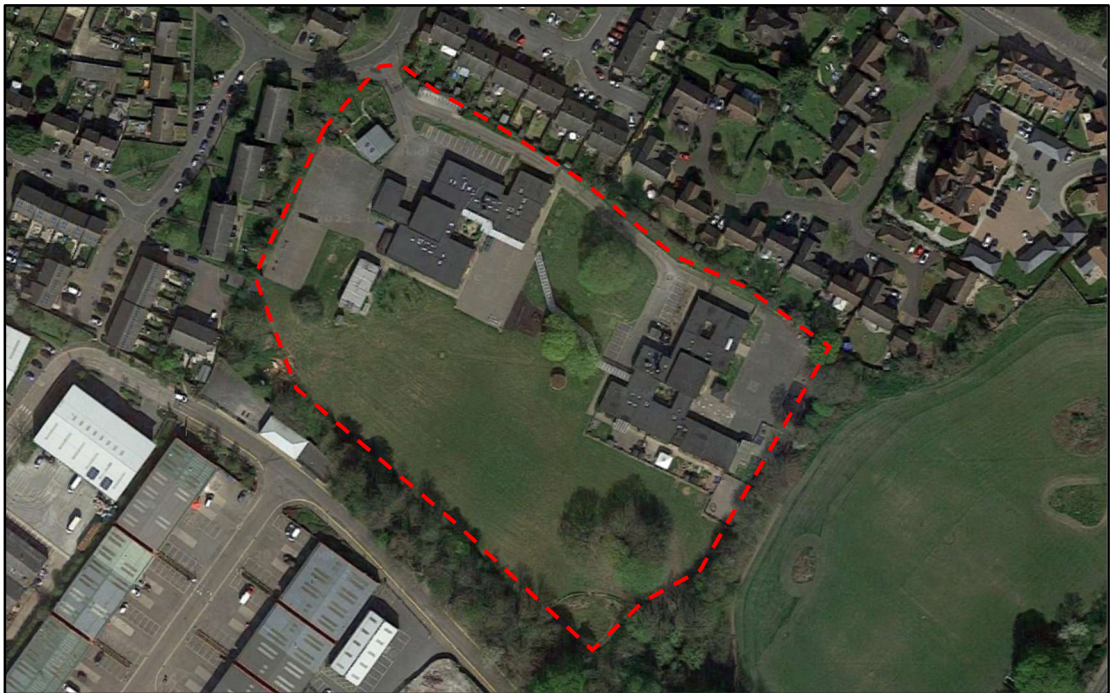


Figure 2.1 Site Location Plan (Image Source: Google Maps)

Initial inspection of the site revealed that the background noise profile at the monitoring location was typical of an urban cityscape environment, with the dominant source being road traffic noise from the surrounding roads.

2.2 Environmental Noise Survey Procedure

Continuous automated monitoring was undertaken for the duration of the noise survey between 07:12 on 16/11/2023 and 07:00 17/11/2023.

The environmental noise measurement position, proposed plant installation locations, and the closest noise sensitive receiver relative to the plant installations are described within Table 2.1 and shown within Figure 2.2.

Icon	Descriptor	Location Description
	Noise Measurement Position	The microphone was installed on an extended poll at approximately first floor height towards the north of the site, as shown in Figure 2.2. The microphone was positioned within free-field conditions at least approx. 1.5 metres from the nearest surface.
	Nearest noise sensitive receptor	Rear façade. 1st Floor window. Residential house, 33 Ascot Cl, Bishop's Stortford CM23 5BP.
	Proposed plant installation location	Proposed plant installations are outlined in Section 5.1.

Table 2.1 Measurement positions and descriptions

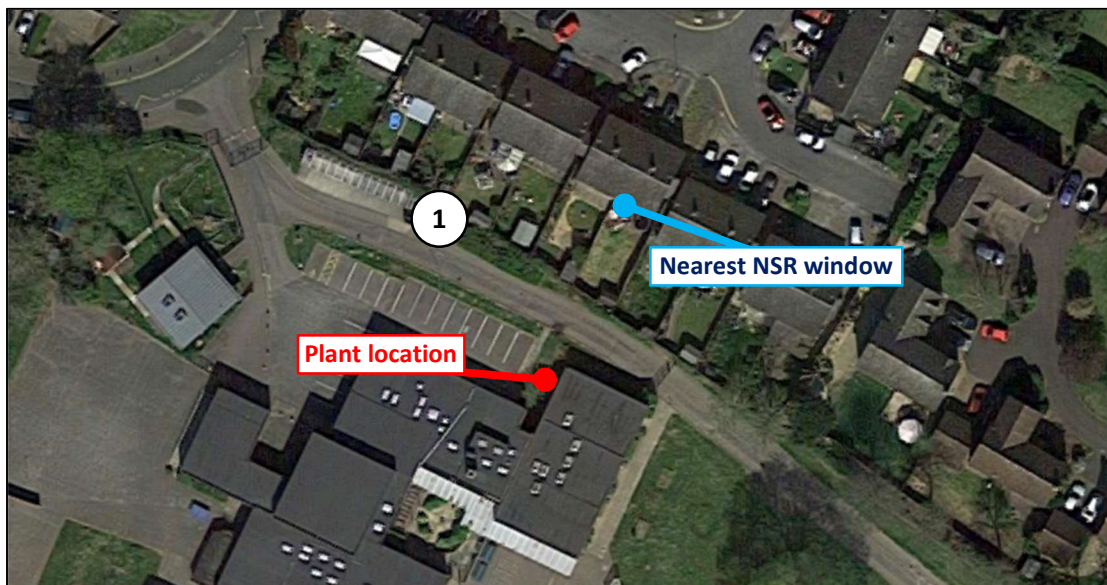


Figure 2.2 Site measurement positions (Image Source: Google Maps)

The choice of the position was based both on accessibility and on collecting representative noise data in relation to the nearest noise sensitive receiver and the proposed plant installation.

Weather conditions were generally dry with light winds and therefore suitable for the measurement of environmental noise. The measurement procedure complied with ISO 1996-2:2017 Acoustics ‘Description, measurement and assessment of environmental noise - Part 2: Determination of environmental noise levels’.

2.3 Equipment

The equipment calibration was verified before and after use and no abnormalities were observed. The equipment used is described within Table 2.2.

Measurement instrumentation		Serial no.	Date	Cert no.
Noise Kit 23	NTI Audio XL2 Class 1 Sound Level Meter	A2A-21143-E0	21/07/2022	UK-22-072
	Free-field microphone NTI Acoustics MC230A	A23366		
	Preamp NTI Acoustics MA220	11034		
	NTI Audio External Weatherproof Shroud	-	-	-
B&K Type 4231 Class 1 Calibrator		2147411	05/06/2023	UCRT23/1739

Table 2.2 Measurement instrumentation

3.0 RESULTS

The $L_{Aeq: 5min}$, $L_{Amax: 5min}$, $L_{A10: 5min}$ and $L_{A90: 5min}$ acoustic parameters were measured throughout the duration of the survey. Measured levels are shown as a time history in Figure 27538.TH1.

Representative background noise levels are shown in Table 3.1 for daytime and night-time.

It should be noted that the representative background noise level has been derived from the most commonly occurring $L_{A90,5 min}$ levels measured during the environmental noise survey undertaken on site, as shown in 27538.DaytimeL90.TH1 and 27538.Night-timeL90.TH1 attached.

Time Period	Representative background noise level L_{A90} dB(A)
Daytime (07:00-23:00)	41
Night-time (23:00-07:00)	39

Table 3.1 Representative background noise levels

4.0 NOISE ASSESSMENT GUIDANCE

4.1 BS4142: 2014 ‘Methods for rating and assessing industrial and commercial sound’

British Standard BS4142:2014 ‘Methods for rating and assessing industrial and commercial sound’ describes a method for rating and assessing sound of an industrial and/or commercial nature, which includes:

- Sound from industrial and manufacturing processes
- Sound from fixed installations which comprise mechanical and electrical plant and equipment
- Sound from the loading and unloading of goods and materials at industrial and/or commercial premises, and
- Sound from mobile plant and vehicles that is an intrinsic part of the overall sound emanating from premises or processes.

This Standard compares the Rating Level due to the noise source/s under assessment for a one-hour period during the daytime (07:00 – 23:00 hours) and a fifteen-minute period during the night-time (23:00 – 07:00 hours) with the existing background noise level in terms of an L_{A90} when the noise source is not operating.

It should be noted that the Rating Level is the Specific Sound Level in question ($L_{Aeq, T}$), including any relevant acoustic feature corrections, as follows:

- **Tonality** – ‘For sound ranging from not tonal to prominently tonal the Joint Nordic Method gives a correction of between 0dB and +6dB for tonality. Subjectively, this can be converted to a penalty of 2dB for a tone which is just perceptible at the noise receptor, 4dB where it is clearly perceptible, and 6dB where it is highly perceptible’
- **Impulsivity** – ‘A correction of up to +9dB can be applied for sound that is highly impulsive, considering both the rapidity of the change in sound level and the overall change in sound level. Subjectively, this can be converted to a penalty of 3dB for

impulsivity which is just perceptible at the noise receptor, 6dB where it is clearly perceptible, and 9dB where it is highly perceptible'

- **Intermittency** – *'If the intermittency is readily distinctive against the residual acoustic environment, a penalty of 3dB can be applied'*
- **Other sound characteristics** – *'Where the specific sound features characteristics that are neither tonal nor impulsive, though otherwise are readily distinctive against the residual acoustic environment, a penalty of 3dB can be applied'*

Once the Rating Level has been obtained, the representative background sound level is subtracted from the Rating Level to obtain an initial estimate of the impact, as follows:

- Typically, the greater this difference, the greater the magnitude of the impact
- A difference of around +10 dB or more is likely to be an indication of a significant adverse impact, depending on the context
- A difference of around +5 dB could be an indication of an adverse impact, depending on the context
- The lower the rating level is relative to the measured background sound level, the less likely it is that there will be an adverse impact or significant adverse impact. Where the rating level does not exceed the background sound level, this is an indication of the specific sound having a low impact, depending on the context

NOTE: Adverse impacts may include but not be limited to annoyance and sleep disturbance. Not all adverse impacts will lead to complaints and not every complaint is proof of an adverse impact.

The initial estimate of the impact may then be modified by taking consideration of the context in which the sound occurs.

4.2 Local Authority Guidance

In absence of project specific requirements from the Local Authority, typical guidance from local planning authorities on such matters has been referenced. In most instances, a requirement that noise levels received from new mechanical plant do not exceed either 5dB, or 10dB (if tonal components are present), below the measured background noise levels is proposed. This should be calculated in line with the methodologies of BS4142, to a position representative of the closest noise sensitive receiver.

4.3 Noise Emissions Criterion

Further to discussions with the client the ASHP unit could be operational at any time of the day or night, and therefore the maximum plant noise emissions criterion has been set as shown in Table 4.1 in order to comply with the above requirements.

Time Period	Maximum Noise Criterion at Nearest Residential Receiver
Night-time (23:00 to 07:00)	34

Table 4.1 Proposed noise emissions criterion

5.0 NOISE IMPACT ASSESSMENT

5.1 Proposed Plant Installations

It is understood that the proposed plant installation is comprised of the following units:

- 1 No. Mitsubishi CAHV-R450YA-HPB Air Source Heat Pump

The proposed installation location for the will unit be towards the north facade of the main school building, as shown in Figure 2.2 above.

The noise emission levels as provided by the manufacturer for the unit are shown in Table 5.1.

Unit	Descriptor	Octave Frequency Band (Hz)								Overall (dBA)
		63	125	250	500	1k	2k	4k	8k	
Mitsubishi CAHV-R450YA-HPB	SPL@1m (dB)	64	73	70	68	62	59	61	52	70

Table 5.1 Plant Units Noise Emission Levels as provided by the manufacturer

The closest noise sensitive receiver to the proposed installation location has been identified as being a first-floor residential window of 33 Ascot Close, located approximately 28 metres from the proposed plant installation location, as shown in Figure 2.2.

5.2 Calculations

Taking all acoustic corrections into consideration, the noise level contribution expected at the closest residential window from the proposed ASHP unit would be as shown in Table 5.2. Detailed calculations are shown in Appendix B.

Receiver	Criterion	Noise Level at 1m From the Closest Noise Sensitive Window
Rear façade. 1st Floor window. Residential house, 33 Ascot Cl, Bishop's Stortford CM23 5BP.	34dB(A)	34dB(A)

Table 5.2 Predicted noise level and criterion at nearest noise sensitive location

As shown in Appendix B and Table 5.2, transmission of noise to the nearest sensitive windows due to the effects of the proposed ASHP unit installation satisfies the emissions criterion providing that the noise control measures described in section 6 are implemented.

6.0 NOISE CONTROL MEASURES

6.1 Proposed Fencing

To control the noise emissions from the proposed unit, we would recommend that fencing should be installed to enclose the unit, for use as an acoustic screen and should be installed to a minimum height of 2 metres. The fencing should be formed of timber panels, a minimum of 25mm thick. It must be ensured that no gaps exist between the fencing gate, and surrounding fixtures, or at any joints between panels. We would recommend that the unit facing side of the fencing are lined with an absorptive backing. The absorptive backing should be formed from a 30-50mm layer of non-flammable absorbent layer, such as rock wool or glass fibre.

6.2 Acoustic Attenuator

In order to control the noise emissions, we recommend that an acoustic attenuator should be installed providing the minimum insertion loss values outlined in Table 6.1 below.

Unit	Insertion Loss Levels (dB) in each Octave Frequency Band							
	63Hz	125Hz	250Hz	500Hz	1kHz	2kHz	4kHz	8kHz
Acoustic Attenuator	3	4	5	7	10	10	8	7

Table 6.1 Insertion loss figures to be provided by acoustic attenuator

Anti-Vibration Mounting Strategy

In the case of all plant units, appropriate anti-vibration mounts should be installed in order to ensure that vibrations do not give rise to structure-borne noise. Appendix C outlines detailed advice in order to ensure that the system installer selects the appropriate anti-vibration mount for the installation.

It is the supplier's responsibility to ensure that all mountings offered are suitable for the loads, operating and environmental conditions which will prevail.

7.0 CONCLUSION

An environmental noise survey has been undertaken at Summercroft Primary School, Bishop's Stortford, CM23 5BJ, by KP Acoustics Ltd between 07:12 on 16/11/2023 and 07:00 17/11/2023. The results of the survey have enabled criteria to be set for noise emissions.

Manufacturer's noise data of proposed plant units has been used to obtain Specific and Rated Noise Level at the nearest noise sensitive receiver in accordance with British Standard BS4142:2014 for compliance with the East Hearts District Council.

The rating level was compared with the representative background noise level to assess the likelihood of impact considering the environmental noise context of the area as per the requirements of BS4142:2014.

It has been concluded that noise emissions from the proposed plant units would not have an adverse impact on the nearest residential receivers provided that the noise control strategy presented in Section 6 is followed.

Summercroft Primary School, Bishop's Stortford CM23 5BJ - Position 1
Environmental Time History
16/11/2023 to 17/11/2023

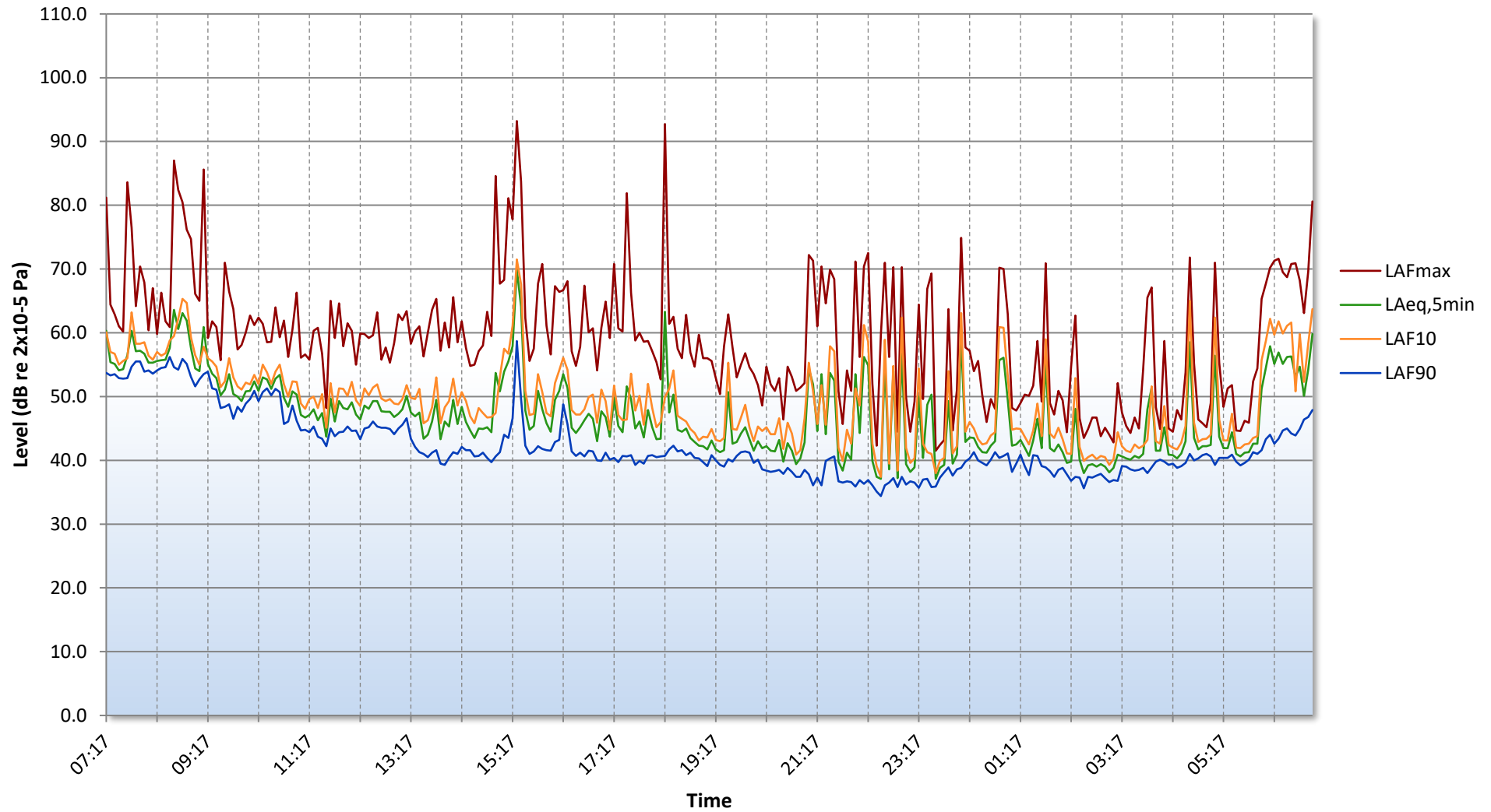


Figure 27538.TH1

GENERAL ACOUSTIC TERMINOLOGY

Decibel scale - dB

In practice, when sound intensity or sound pressure is measured, a logarithmic scale is used in which the unit is the 'decibel', dB. This is derived from the human auditory system, where the dynamic range of human hearing is so large, in the order of 10^{13} units, that only a logarithmic scale is the sensible solution for displaying such a range.

Decibel scale, 'A' weighted - dB(A)

The human ear is less sensitive at frequency extremes, below 125Hz and above 16Khz. A sound level meter models the ears variable sensitivity to sound at different frequencies. This is achieved by building a filter into the Sound Level Meter with a similar frequency response to that of the ear, an A-weighted filter where the unit is dB(A).

L_{eq}

The sound from noise sources often fluctuates widely during a given period of time. An average value can be measured, the equivalent sound pressure level L_{eq} . The L_{eq} is the equivalent sound level which would deliver the same sound energy as the actual fluctuating sound measured in the same time period.

L_{10}

This is the level exceeded for no more than 10% of the time. This parameter is often used as a "not to exceed" criterion for noise.

L_{90}

This is the level exceeded for no more than 90% of the time. This parameter is often used as a descriptor of "background noise" for environmental impact studies.

L_{max}

This is the maximum sound pressure level that has been measured over a period.

Octave Bands

In order to completely determine the composition of a sound it is necessary to determine the sound level at each frequency individually. Usually, values are stated in octave bands. The audible frequency region is divided into 11 such octave bands whose centre frequencies are defined in accordance with international standards. These centre frequencies are: 16, 31.5, 63, 125, 250, 500, 1000, 2000, 4000, 8000 and 16000 Hertz.

Environmental noise terms are defined in BS7445, *Description and Measurement of Environmental Noise*.

APPLIED ACOUSTIC TERMINOLOGY

Addition of noise from several sources

Noise from different sound sources combines to produce a sound level higher than that from any individual source. Two equally intense sound sources operating together produce a sound level which is 3dB higher than a single source and 4 sources produce a 6dB higher sound level.

Attenuation by distance

Sound which propagates from a point source in free air attenuates by 6dB for each doubling of distance from the noise source. Sound energy from line sources (e.g. stream of cars) drops off by 3dB for each doubling of distance.

Subjective impression of noise

Hearing perception is highly individualised. Sensitivity to noise also depends on frequency content, time of occurrence, duration of sound and psychological factors such as emotion and expectations. The following table is a guide to explain increases or decreases in sound levels for many scenarios.

Change in sound level (dB)	Change in perceived loudness
1	Imperceptible
3	Just barely perceptible
6	Clearly noticeable
10	About twice as loud

Transmission path(s)

The transmission path is the path the sound takes from the source to the receiver. Where multiple paths exist in parallel, the reduction in each path should be calculated and summed at the receiving point. Outdoor barriers can block transmission paths, for example traffic noise. The effectiveness of barriers is dependent on factors such as its distance from the noise source and the receiver, its height and construction.

Ground-borne vibration

In addition to airborne noise levels caused by transportation, construction, and industrial sources there is also the generation of ground-borne vibration to consider. This can lead to structure-borne noise, perceptible vibration, or in rare cases, building damage.

Sound insulation - Absorption within porous materials

Upon encountering a porous material, sound energy is absorbed. Porous materials which are intended to absorb sound are known as absorbents, and usually absorb 50 to 90% of the energy and are frequency dependent. Some are designed to absorb low frequencies, some for high frequencies and more exotic designs being able to absorb very wide ranges of frequencies. The energy is converted into both mechanical movement and heat within the material; both the stiffness and mass of panels affect the sound insulation performance.

APPENDIX B Summerville Primary School

PLANT NOISE EMISSIONS CALCULATIONS

Source: ASHP installation Serving Summerville Primary Receiver: 1st Floor window. Residential house 33 Ascot Cl	<i>Frequency, Hz</i>								<i>dB(A)</i>
	<i>63</i>	<i>125</i>	<i>250</i>	<i>500</i>	<i>1k</i>	<i>2k</i>	<i>4k</i>	<i>8k</i>	
CAHV-R450YA-HPB Heat Pump SPL@1m, dB	64	73	70	68	62	59	61	52	70
Correction due to surface reflections (2), dB	6	6	6	6	6	6	6	6	
Minimum attenuation provided by screening from proposed fencing, dB	-4	-5	-5	-5	-5	-5	-6	-6	
Minimum attenuation provided by acoustic attenuator, dB	-3	-4	-5	-7	-10	-10	-8	-7	
Minimum attenuation provided by distance (28m), dB	-29	-29	-29	-29	-29	-29	-29	-29	
Total Specific Level of all Plant Unit Installations at Receiver	34	41	37	33	24	21	24	16	34
<i>BS4142 Acoustic Feature Corrections</i>									
Tonality	0	0	0	0	0	0	0	0	
Impulsivity	0	0	0	0	0	0	0	0	
Intermittency	0	0	0	0	0	0	0	0	
Total Rating Noise Level of all Plant Unit Installations at Receiver	34	41	37	33	24	21	24	16	34

Design Criterion	34
-------------------------	-----------

ANTI-VIBRATION MOUNTING SPECIFICATION REFERENCE DOCUMENT

1.0 General

- 1.1 All mountings shall provide the static deflection, under the equipment weight, shown in the schedules. Mounting selection should allow for any eccentric load distribution or torque reaction, so that the design deflection is achieved on all mountings under the equipment, under operating conditions.
- 1.2 It is the supplier's responsibility to ensure that all mountings offered are suitable for the loads, operating and environmental conditions which will prevail. Particular attention should be paid to mountings which will be exposed to atmospheric conditions to prevent corrosion.
- 1.3 All mountings shall be colour coded, or otherwise marked, to indicate their load capacity, to facilitate identification during installation.

Where use of resilient supports allows omission of pipe flexible connections for vibration/noise isolation, it shall be the Mechanical Service Consultant's or Contractor's responsibility to decide whether such devices are required to compensate for misalignment or thermal strain.

2.1 Type A Mounting (Caged Spring Type)

- 2.1.1 Each mounting shall consist of cast or fabricated telescopic top and bottom housings enclosing one or more helical steel springs as the principle isolation elements, and shall incorporate a built-in levelling device. The housing should be designed to permit visual inspection of the springs after installation, i.e. the spring must not be totally enclosed.
- 2.1.2 The springs shall have an outside diameter of not less than 75% of the operating height, and be selected to have at least 50% overload capacity before becoming coil-bound.
- 2.1.3 The bottom plate of each mounting shall have bonded to it a rubber/neoprene pad designed to attenuate any high frequency energy transmitted by the springs.
- 2.1.4 Mountings incorporating snubbers or restraining devices shall be designed so that the snubbing, damping or restraining mechanism is capable of being adjusted to have no significant effect during the normal running of the isolated machine.
- 2.1.5 All nuts, bolts or other elements used for adjustment of a mounting shall incorporate locking mechanisms to prevent the isolator going out of adjustment as a result of vibration or accidental or unauthorised tampering.

2.2 Type B Mounting (Open Spring Type)

- 2.2.1 Each mounting shall consist of one or more helical steel springs as the principal isolation elements, and shall incorporate a built-in levelling device.
- 2.2.2 The springs shall be fixed or otherwise securely located to cast or fabricated top and bottom plates, shall have an outside diameter of not less than 75% of the operating height, and shall be selected to have at least 50% overload capacity before becoming coil-bound.
- 2.2.3 The bottom plate shall have bonded to it a rubber/ neoprene pad designed to attenuate any high frequency energy transmitted by the springs.

2.3 Type C Mounting (Rubber/Neoprene Type)

Each mounting shall consist of a steel top plate and base plate completely embedded in oil resistant rubber/neoprene. Each mounting shall be capable of being fitted with a levelling device, and should have bolt holes in the base plate and a threaded metal insert in the top plate so that they can be bolted to the floor and equipment where required.

3.0 Plant Bases

3.1 Type A Bases (A.V. Rails)

An A.V. Rail shall comprise a steel beam with two or more height-saving brackets. The steel sections must be sufficiently rigid to prevent undue strain in the equipment and if necessary should be checked by the Structural Engineer.

3.2 Type B Bases (Steel Plant Bases)

Steel plant bases shall comprise an all-welded steel framework of sufficient rigidity to provide adequate support for the equipment, and fitted with isolator height saving brackets. The frame depth shall be approximately 1/10 of the longest dimension of the equipment with a minimum of 150 mm. This form of base may be used as a composite A.V. rail system.

3.3 Type C Bases (Concrete Inertia Base: for use with steel springs)

These shall consist of an all-welded steel pouring frame-work with height saving brackets, and a frame depth of approximately 1/12 of the longest dimension of the equipment, with a minimum of 100 mm. The bottom of the pouring frame should be blanked off, and concrete (2300 kg/m³) poured in over steel reinforcing rods positioned 35 mm above the bottom. The inertia base should be sufficiently large to provide support for all parts of the equipment, including any components which over-hang the equipment base, such as suction and discharge elbows on centrifugal pumps.