





Notes:

- This drawing shall be read in conjunction with all other drawings and specifications relating to this project.
- The electrical installation is to be installed in accordance with the 18th Edition of BS7671.
- The design of the podium lighting shall be reviewed and confirmed as acceptable by all parties prior to commencement of works.
- Lighting shall be fed from the landlords distribution board located within the apartment blocks electrical riser at first floor level. Refer to 07 Series distribution board schedules.
- External lighting circuits to be controlled via timeclock/photocell.
- External lighting cabling to be run within the soft dig areas where available.
- Lighting shall be wired in 2.5mm² SWA/PVC/LSF.
- The electrical contractor shall review this drawing prior to commencement of installation and shall raise any queries regarding the design.

Legend:

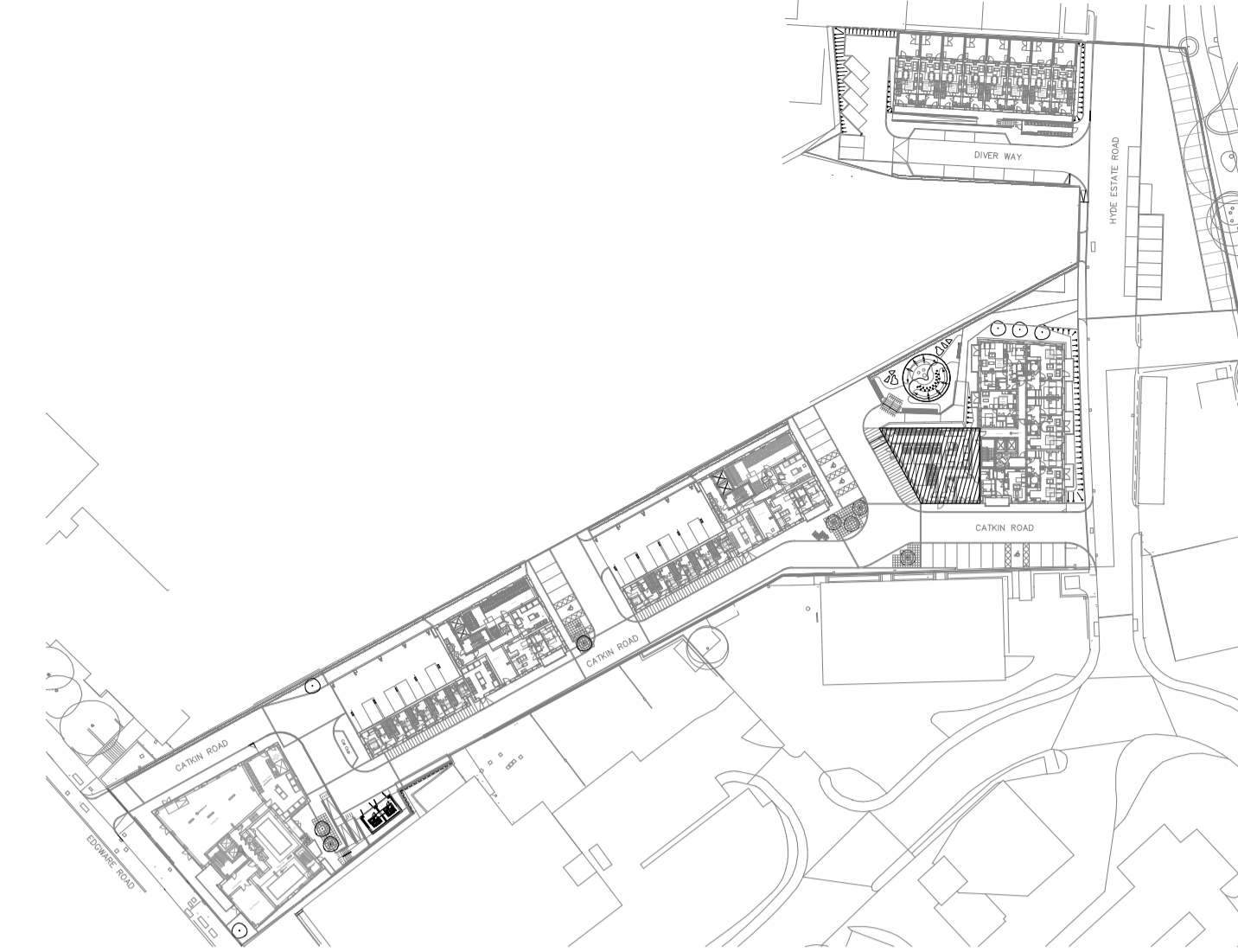
- PC  10A Wall mounted photocell/dusk till dawn sensor ref: CEF DL4061
- DE  Surface mounted IP65 External (Wall) LED fitting c/w 3hr maintained emergency pack - Controlled via photocell and timeclock
- UL  Recessed Tree Up-Light - DW Windsor - Lador & Ground Spike Accessory
- BL  1000mm LED Bollard Light - DW Windsor - Kirium 200



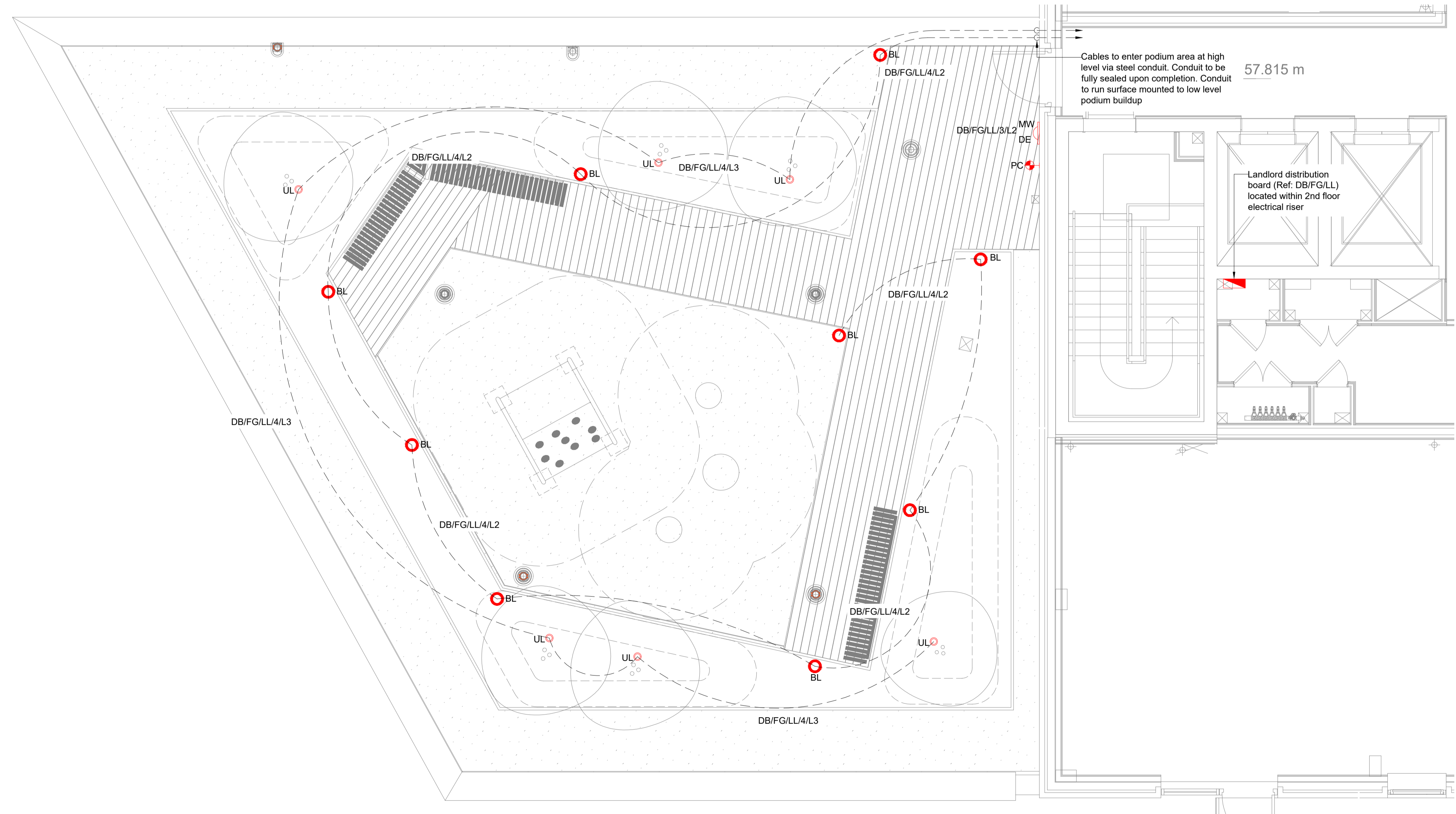
3 Bollard - Kirium 200
Scale: NTS



4 Tree Uplight - Lador Spike Light
Scale: NTS



2 The Hyde - Site Plan
Scale: NTS



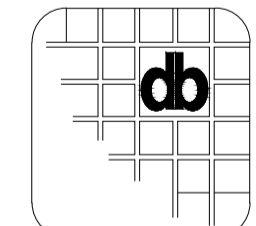
1 The Hyde - Block F - Podium Lighting
Scale: 1 : 50

Notes:-
This drawing is the property of Designbrook Ltd and as such may not be copied or communicated to a third party without written authorisation.
This drawing conveys design intent and is provided to assist the contractor in the development of their working drawings.
THE CONTRACTOR SHALL NOT INSTALL TO THIS DRAWING.
Please do not scale from this drawing.

CDM Regulations

Revision	Date	By	Description
C1	13.04.23	SC	Construction Issue
T1	03.10.22	JD	T2 Issue

Designbrook Ltd
Unit J2, The Granary,
Bridge Farm,
Reading Road, Arborfield,
Berkshire, RG2 9HT
TEL: 0118 9 773 011
E-mail: admin@designbrook.co.uk



Client:
LONDON SQUARE
HEAD OFFICE,
ONE YORK ROAD,
UXBRIDGE,
MIDDLESEX,
UB8 3RN
WWW.LONDONSQUARE.CO.UK



Project Description:
The Hyde, Colindale, Phase 1
Drawing Title:
Block F - Podium Lighting Layout

Status:			
Construction Issue			
Drawn/Checked by:	Approved by:		
JD	AE		
Job Number:	Original Sheet Size:	Scale:	Sheet 1
6432	A1	1:50	Of: 1
Drawing number:			Rev:
6432-E-F-05-100-63-252			C1