

ASHP Roof Plant Notes

For Mechanical Notes & Legends refer to drawing drgs:

- 6432-M-Z-M-000-50-900
- 6432-M-Z-M-000-50-901

For Energy Centre schematic, refer to drg:

- 6432-M-Z-M-900-56-700

For Energy Centre Layout, refer to drg:

- 6432-M-A-01-100-56-100

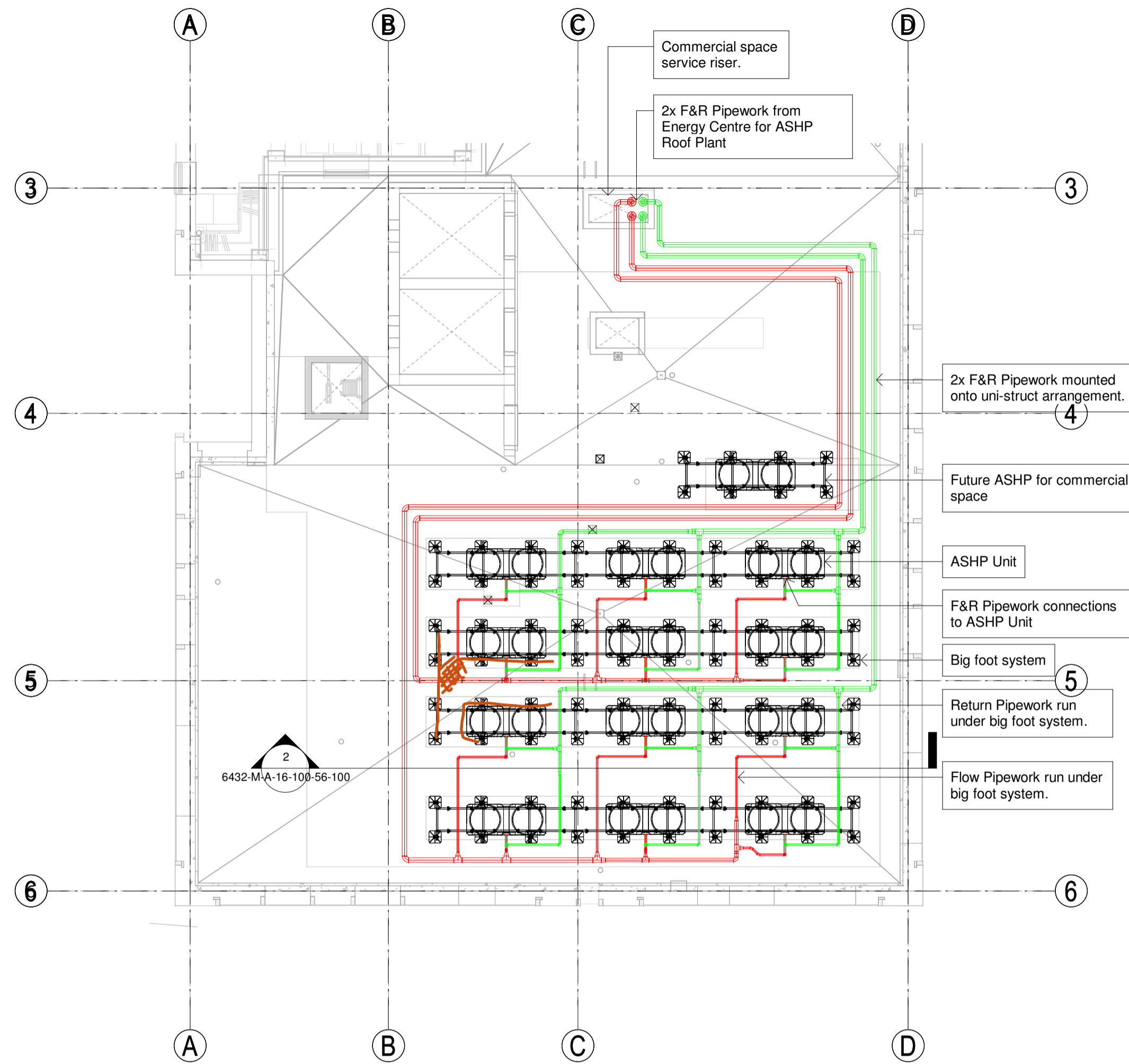
For District Heating Riser Schematics refer to drgs:

- 6432-M-A-M-700-56-700
- 6432-M-A-M-700-56-701
- 6432-M-BC-M-700-56-702
- 6432-M-DE-M-700-56-703
- 6432-M-FG-M-700-56-704

For District Heating Plant & Equipment refer to schedule:

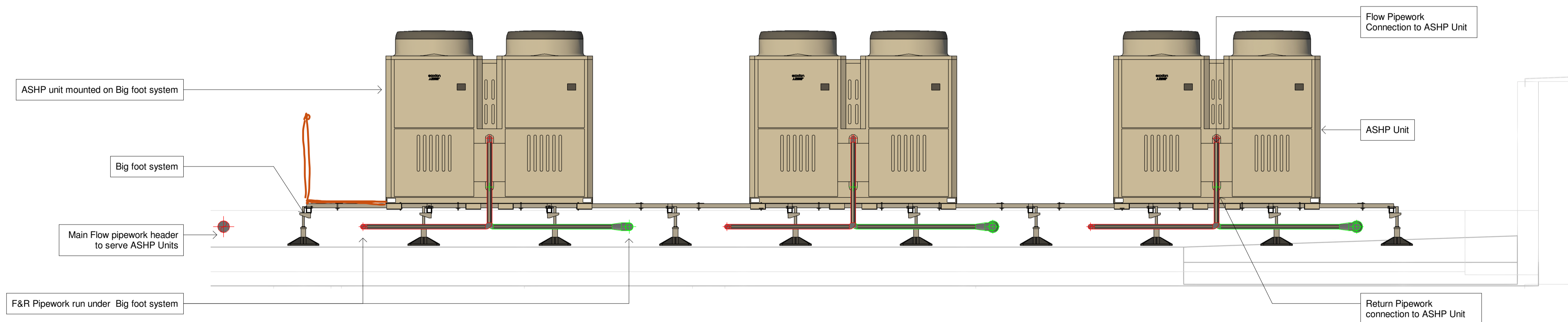
- 6432-M-A-ZZ-600-07-130

For service pipeline sizes, fittings & accessories refer to the energy centre system schematic.



1 L16 - ASHP Roof Plant

1 : 100



2 ASHP Section 1

1 : 25

Sheet Notes:

This drawing is the property of Designbrook Ltd and as such may not be copied or communicated to a third party without written authorisation.

This drawing conveys design intent and is provided to assist the contractor in the development of their working drawings. **THE CONTRACTOR SHALL NOT INSTALL TO THIS DRAWING.**

PLEASE DO NOT SCALE FROM THIS DRAWING.

Safety, Health and environmental information unusual significant hazards

It is assumed that all works will be carried out by a competent contractor working, where appropriate, to an approved method statement, in addition to the hazards/risks normally associated with the type of work detailed on this drawing note the following:

Construction

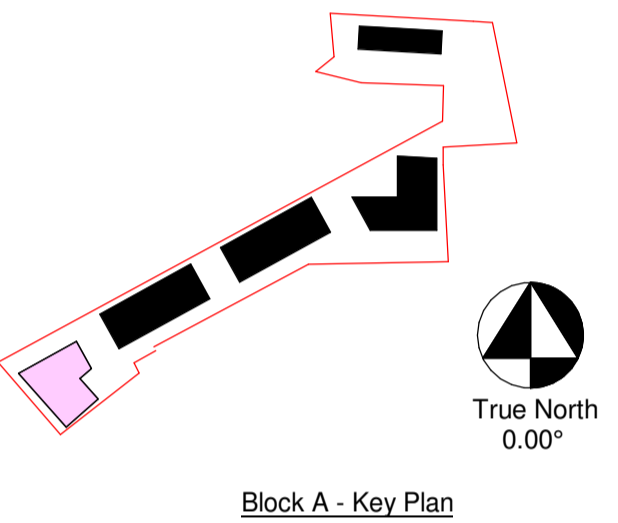
1. Working at high height to install all new high level services shall be managed safely, using the correct equipment.
2. During the creation of new builderswork holes for cables to pass through workers should be using the correct PPE equipment.
3. The use of portable tools should be done through 110V supplies only

Maintenance/cleaning

1. The installation of MEPH equipment has been coordinated during the design stage to ease maintenance and avoid unnecessary risks.

Operation

1. There are no unusual operation risk identified.



REVISION	DRAWN BY	CHECKED BY	DATE	DESCRIPTION
T2	JE	AE	20/09/22	Updated to latest ER's received & comments from design team
T1	SJL	AE	15/06/22	T1 Issue

CLIENT

LONDON SQUARE
 HEAD OFFICE,
 ONE YORK ROAD,
 UXBRIDGE,
 UES8 1RN
 WWW.LONDONSQUARE.CO.UK



Designbrook Ltd,
 Unit J2, The Granary,
 Bridge Farm,
 Reading Road,
 Arborfield,
 Berkshire, RG2 9HT
 Tel: 0118 9 773 011
 E-mail: admin@designbrook.co.uk



PROJECT TITLE

The Hyde, Colindale, Phase 1

DRAWING ISSUE

Construction Issue

DRAWING TITLE

Block A - Sixteenth Floor, District Heating ASHP Roof Plant

SCALE	DRAWN
1:50@A1	SJL
DATE	CHECKED
14/06/2022	AF
DBR Project No.	
J6432	

Identification	Sheet Number
6432-M-A-16-100-56-100	C1

