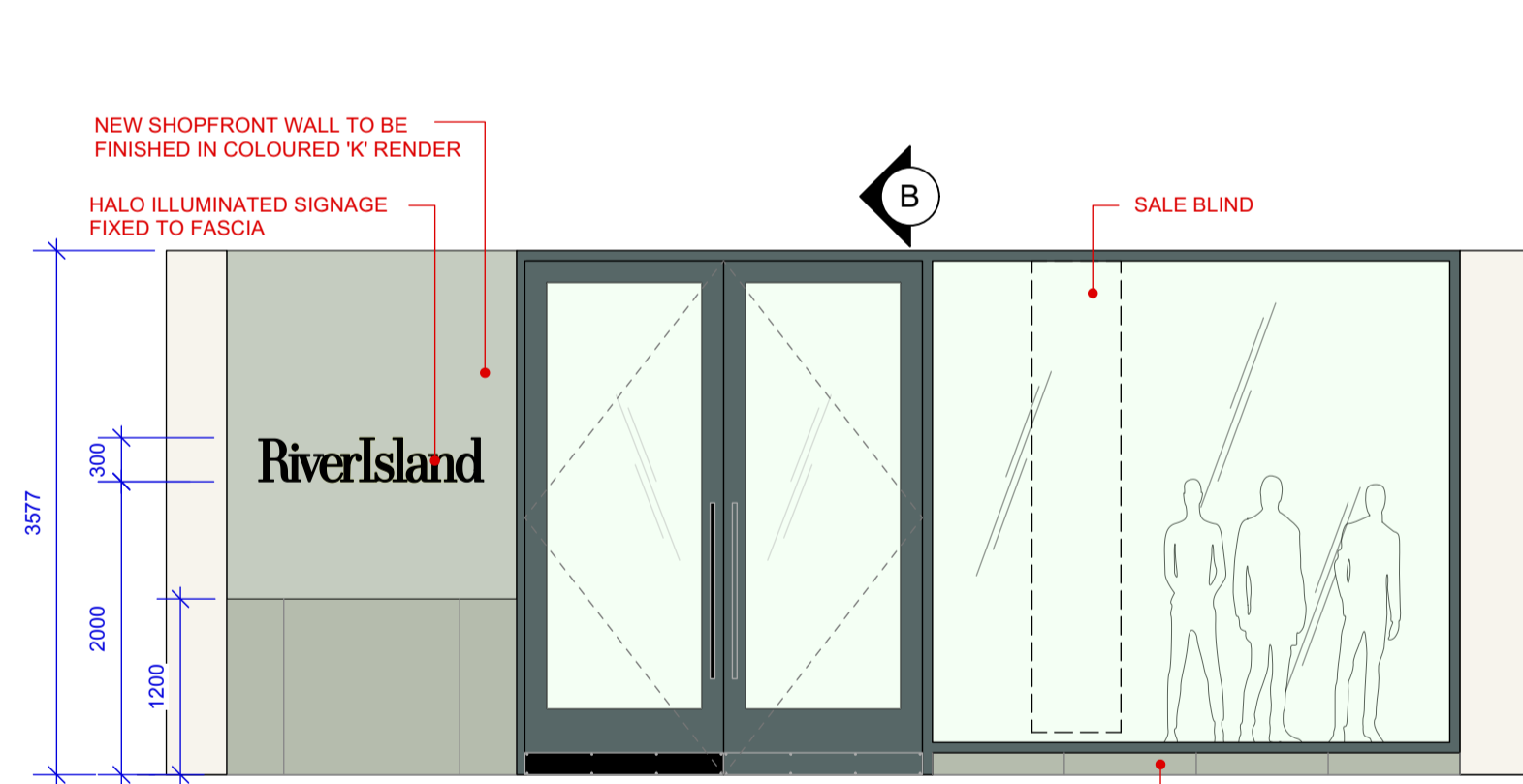


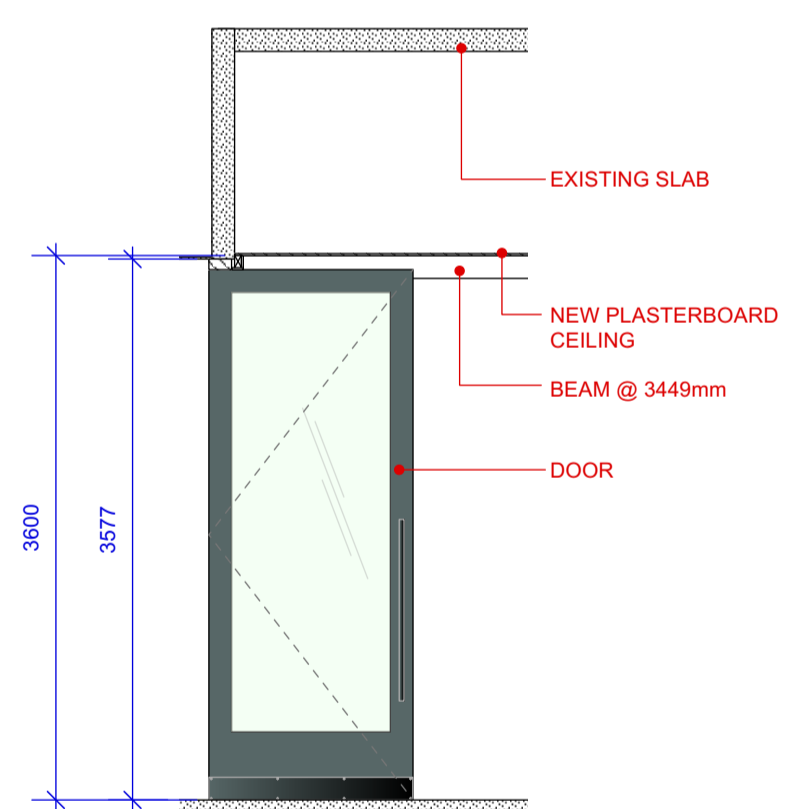
RETURN ELEVATION



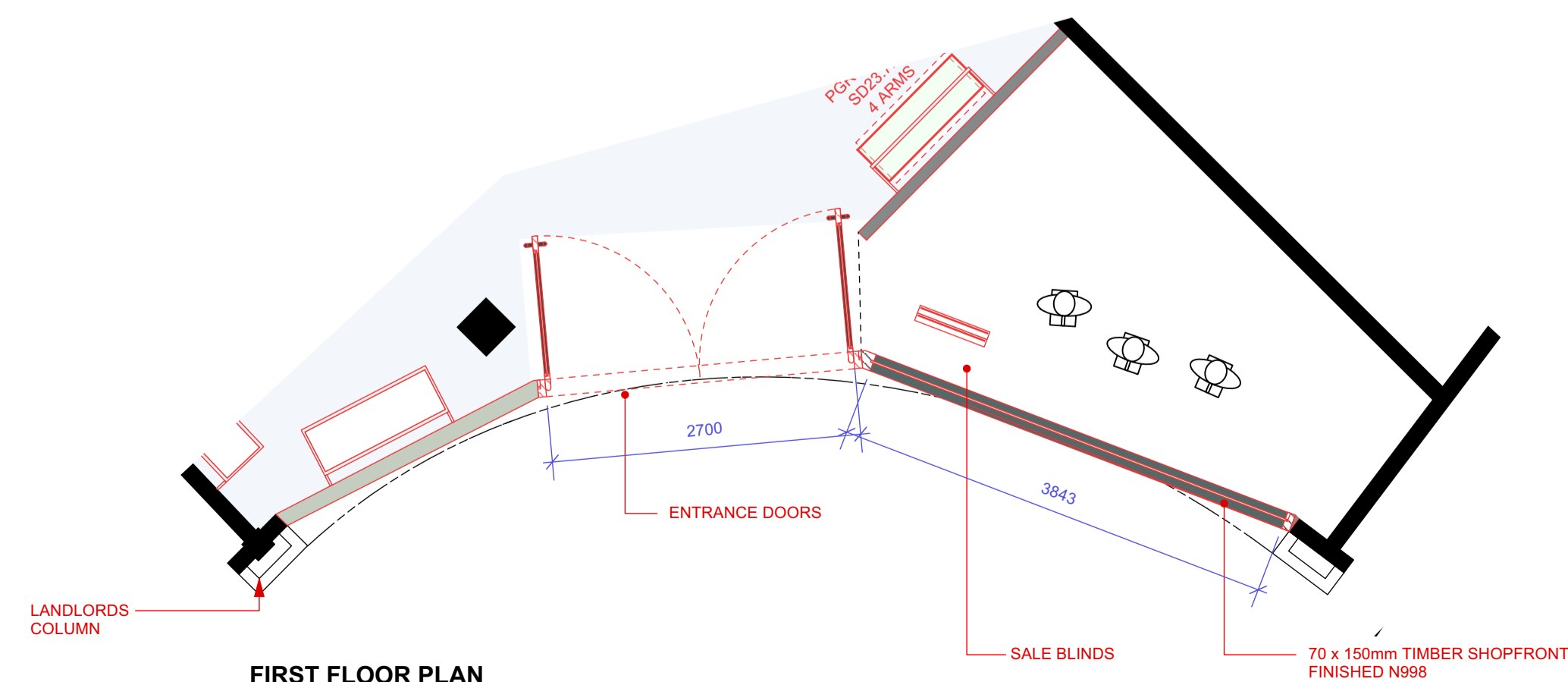
PLAN



FIRST FLOOR ELEVATION



FIRST FLOOR SECTION BB



FIRST FLOOR PLAN

REVISIONS	DESCRIPTION	DATE	INITIAL
I	FIRST FLOOR - TILE JOINT LINES UPDATED	24.10.23	PG
H	1ST FLOOR SHOPFRONT DOORS REVERTED TO PREVIOUS REVISIONS POSITION. SHOPFRONT HEIGHT INCREASE REMAINS.	10.10.23	HB
G	1ST FLOOR SHOPFRONT UPDATED TO SITE DIMENSIONS - HEIGHT INCREASED & DOORS REPOSITIONED TO AVOID BEAM	09.10.23	HB
F	RETURN ELEVATION - EXISTING GLAZING FRAME RETAINED, NEW WHERE SHOWN. NOTES ADDED	31.10.22	PG
E	SHOPFRONT DESIGN ALTERED	09.06.23	JC
D	SECTIONS AA AND CC ADDED. 1ST FLOOR SHOPFRONT UPDATED	31.10.22	PG
C	NEW RIVER ISLAND LOGO ADDED TO SHOPFRONT	21.02.23	HB
B	UPDATED TO RIVER STUDIOS DESIGN	31.10.22	PG
A	UPDATED IN LINE WITH LANDLORDS COMMENTS. 1ST FLOOR - OPTION 2 ADDED	16.05.22	PG

# RiverIsland

FINISHES	GLAZING FRAME AND DOORS	TILES	RENDER	SHOPFRONT SIGN
	TIMBER DOORS PAINTED N998	ABK SALVIA 6mm	'K' RENDER COLOURED TO MATCH DULUX 20GY 46/067	REAR ILLUMINATED BLACK ACRYLIC LETTERS, MATT BLACK

PROJECT		CHEK'D
UNIT 2.24 LEEDS TRINITY SHOPPING PLAZA		DATE 01.03.22
TITLE		SCALE 1:50 @ A1
PROPOSED SHOPFRONT RETURN ELEVATION & FIRST FLOOR		DRAWN BY HB
		DRAWING NO. 939.22.02.11

