

Contents

1. Project Personnel Directory
2. Scope of Works
3. Enabling Works/Formation of Site Perimeter
4. Site Parking & Storage of Plant & Materials
5. Management of Vehicle Access/Egress & Deliveries
6. Wheel Wash Facility
7. Management of Dirt & Dust
8. Excavation and Ground Works
9. Protection of Existing Trees to be retained
10. Recycling/disposing of waste resulting construction work
11. Noise Control

Appendices

Appendix A – Construction Phase/Existing Site Plan

Appendix B – Proposed Site & Access Plans

Appendix C – Predicted Vehicle Movements

Appendix D – Tree Protection Measures

Construction Management Plan

2.0 Scope of Works

2.1 The scheme involves the construction of a synthetic turf pitch on a greenfield site. The area will be fenced with colour coated welded mesh fencing. The facility will have floodlights. Existing & Proposed Plans are included in the Appendix to this document for reference.

2.2 The 24hr contact for the site will be Mr Simon Hall – 07517 470 852

3.0 Enabling Works/Formation of Site Perimeter

3.1 At commencement, the perimeter of the site will be established and securely protected with a combination of existing fencing and Heras style security fencing complete with all necessary signage in accordance with HSE requirements.

3.2 An area of the existing car park will be used for welfare and storage facilities, the parking of site vehicles, deliveries and material storage.

4.0 Site Parking & Storage of Plant & Materials

4.1 All contractor's vehicles will park within the site area in a designated parking area on the pitch site. There will be no contractor parking on Sandy Lodge Lane.

4.2 All materials and plant will be stored within the fenced site area. Materials such as bagged cement and equipment will be stored in a secure site container.

5.0 Management of Vehicle Access/Egress, Deliveries & Loading/Unloading of Plant Material

5.1 Access to the site will be via the internal School access road off Sandy Lodge Lane. An access plan has been appended to this CMP. A dilapidation survey will be undertaken prior to the commencement of works.

5.2 The access route is of sufficient width and suitable construction to be used for the construction of the synthetic turf pitch. It has been used recently for large scale projects, notably the construction of the second hockey pitch and the new cricket facility.

5.3 Sandy Lodge Lane is a shared access road for the School and a gated residential estate. Deliveries will be planned to avoid busy times during the day and to take advantage of quieter times/days.

HGV movements will be scheduled in advance where possible to avoid congestion. 8-wheel lorry movements have been reduced significantly due to the top soil staying on site for future use by the School. However, there will many vehicles required for the delivery of the aggregate for the sub-base and the tarmac for the base – these will be over a relative short period. The remainder of the deliveries will involve less vehicle movements spread out over the course of the programme.

No deliveries will be permitted to wait on Sandy Lodge Lane or any other road in the vicinity. There is sufficient room on the construction site to accommodate several delivery vehicles at any one time. These vehicles will wait until they are able to unload/tip.

Construction Management Plan

A breakdown of predicted vehicle movements and deliveries has been appended to this document.

- 5.4 Construction traffic routes will be kept a safe distance from trench works at all times.
- 5.5 The contractor will manage the risk of any road contamination by regular monitoring. Should the road become contaminated any debris will be removed.
- 5.6 The construction site access will experience increased traffic during pick-up and drop-off and delivery restrictions will apply during these times.
- 5.7 Generally, delivery times will be restricted to between 07:00 – 18:00.
- 5.8 Upon completion of the works a survey of the access route will be undertaken and any damage/changes to the condition of the route will be made good.

6.0 Wheel Wash Facility

- 6.1 Delivery vehicles will travel on hard paved surfaces only while on site. However, prior to leaving the site vehicles will be inspected and the wheels will be washed using a small jet wash unit as required.
- 6.2 The contractor will manage the risk of any road contamination by regular monitoring. Should the road become contaminated any debris will be removed.

7.0 Management of Dirt & Dust

- 7.1 If dust emissions are generated in dry periods, the contractor will use water spray to wet the material and suppress the dust. This will be done with a towed bowser.
- 7.2 The site manager will take account of weather conditions and prevailing wind direction when organising operations to prevent and minimise dust nuisance to neighbouring properties.
- 7.3 All site staff will be trained and be aware of the Dust Management Strategy.
- 7.4 The access road and site compound are a mixture of stone and macadam surface and provide a good, clean working platform and should prevent road contamination.
- 7.5 All site staff will have appropriate PPE to protect them from the effects of dust.

8.0 Excavation and Ground Works

8.1 Location of underground Services

- 8.1.1 Prior to commencing excavations, the site area will be checked for overhead and underground services.
- 8.1.2 Service plans will be obtained from Utility providers and the site area checked using a locating device.
- 8.1.3 Once identified service routes will be identified and clearly marked. If markings are lost during the working operation the exercise will be repeated to ensure service routes remain clearly marked as required for the duration of the works.
- 8.1.4 Works will be undertaken in accordance with the HSE Guidance Document, Avoiding danger from underground services.

8.2 Excavations

- 8.2.1 Trenches with a depth exceeding 1m will be either battered back or suitably shored and the shoring maintained.
- 8.2.2 Trenches will be inspected regularly, and excess groundwater pumped out regularly during inclement weather.
- 8.2.3 Vehicle plant will be kept a safe working distance from the trench to prevent potential collapse.
- 8.2.4 No site staff will work below an excavator.

9.0 Protection of Existing Trees to be retained

- 9.1 Protection will be provided in accordance with BS5837-2012. Heras type fencing will be sited around the trees to prevent site operations affecting root growth etc with Type A fencing, all as detailed in Appendix C.

10.0 Recycling/disposing of waste resulting construction work

- 10.1 The land is a green field site so there will be very little waste material from demolition. In respect of the construction work, the following measures have been identified to minimise the quantity of waste produced during this project:
 - 10.1.1 The experienced site manager will be responsible for identifying and segregating waste on site.
 - 10.1.2 All waste resultant from the works will be segregated on site.
 - 10.1.3 Resultant hard core will be re-used where possible in the substructure.
 - 10.1.4 Re-usable materials will be identified on site and removed for storage and re-sale.
 - 10.1.5 Recyclable materials will be removed from site for processing in licenced facilities.

11.0 Noise Control

- 11.1 Whilst working on site the contractor will adhere to the recommendations of BS 5228- 1, clause 9.3 to minimize noise levels during the execution of the Works.
- 11.2 The project is a relatively straight forward synthetic turf pitch build with no notable works which would cause significant noise pollution.

Merchant Taylors' School - Synthetic Turf Pitch Construction

Construction Management Plan

APPENDICES

APPENDIX A: CONSTRUCTION PHASE/ EXISTING SITE PLAN

APPENDIX B: PROPOSED SITE AND ACCESS PLANS

APPENDIX C: PREDICTED VEHICLE MOVEMENTS

APPENDIX D: TREE PROTECTION MEASURES

Merchant Taylors' School - Synthetic Turf Pitch Construction
Construction Management Plan

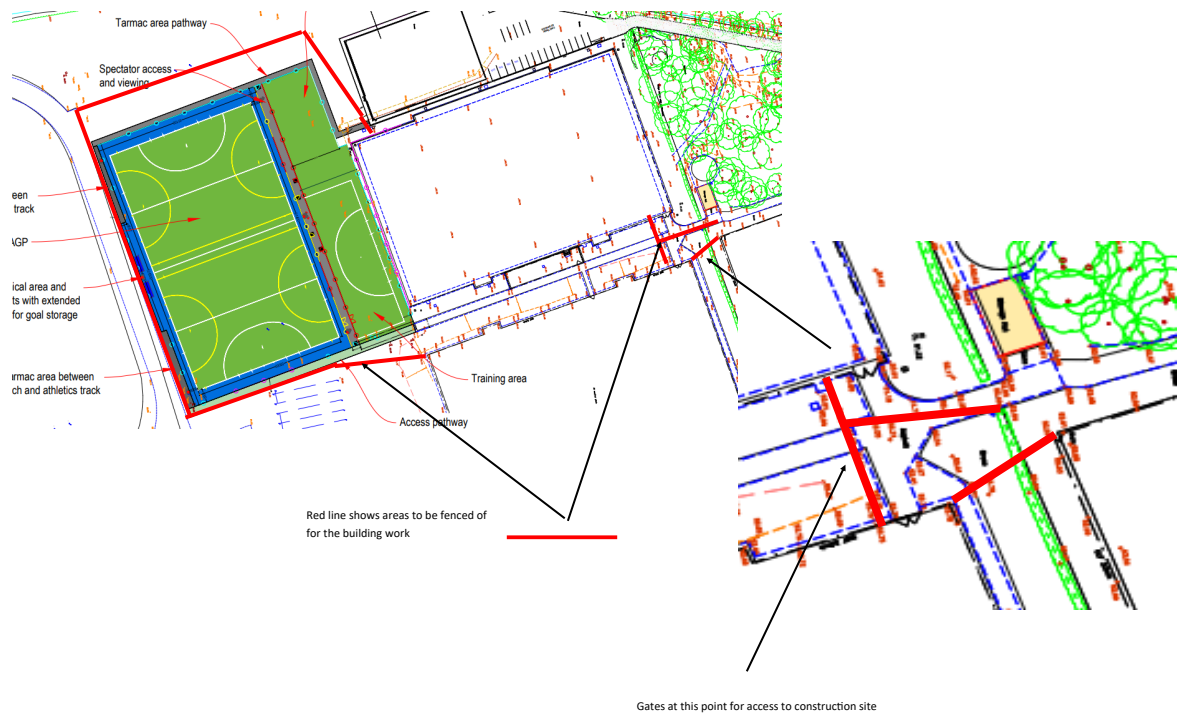
APPENDIX A

Merchant Taylors' School - Synthetic Turf Pitch Construction
Construction Management Plan

APPENDIX B

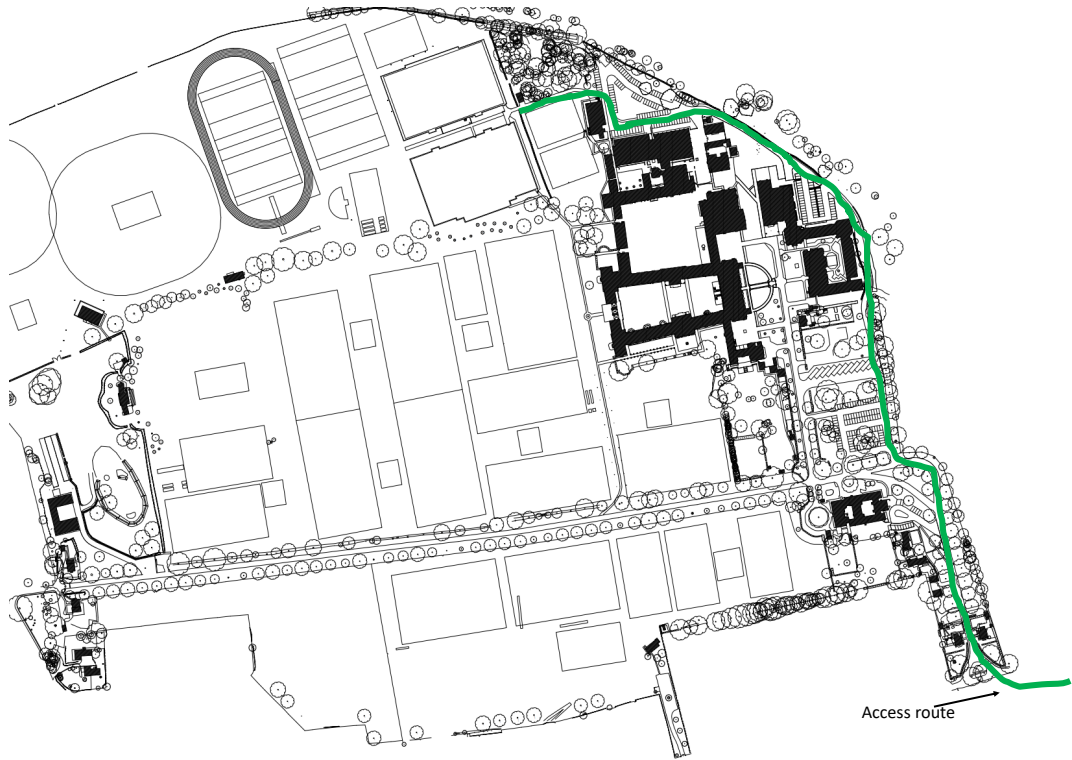
Merchant Taylors' School - Synthetic Turf Pitch Construction

Construction Management Plan



Merchant Taylors' School - Synthetic Turf Pitch Construction

Construction Management Plan



Merchant Taylors' School - Synthetic Turf Pitch Construction

Construction Management Plan

APPENDIX C

Merchant Taylors' School – Predicted Vehicle Movements

Vehicle Movement – Number, Type, Size & Weight

There will be no deliveries on Sundays or bank holidays. Deliveries on Saturdays will be limited, and we will use our best endeavours to restrict these to Saturday mornings.

Week 1: 5 no. small HGVs for site set up Max 10T 8m long x 2.2m wide

1 no. small beavertail for plant delivery

5-6 no. panel vans/pickups for labour

Week 2: 1 no. small pickup for welfare maintenance

2 no. low loaders for excavation plant Max 40T 14m long x 2.4m wide

5-6 no. panel vans/pickups for labour

Week 3: 1 no. small pickup for welfare maintenance

2 no. low loaders for stabilisation plant Max 40T 14m long x 2.4m wide

Tankers for lime/cement delivery Max 40T 12m long x 2.2m wide

5-6 no. panel vans/pickups for labour

Week 4: 1 no. small pickup for welfare maintenance

Tankers for lime/cement delivery Max 40T 12m long x 2.2m wide

5 no. 8 wheel wagons for gravel. Max 30T 9m long x 2.5m wide

5-6 no. panel vans/pickups for labour

Week 5: 1 no. small pickup for welfare maintenance

2 no. low loaders for stabilisation plant Max 40T 14m long x 2.4m wide

5 no. flatbed HGVs for material delivery Max 10T 8m long x 2.2m wide

5 no. 8 wheel wagons for gravel Max 30T 9m long x 2.5m wide

60 no. 8 wheel wagons for stone Max 30T 9m long x 2.5m wide

2 no. 8 wheel wagons for ready mix concrete Max 25T 9m long x 2.5m wide

Merchant Taylors' School - Synthetic Turf Pitch Construction

Construction Management Plan

5-6 no. panel vans/pickups for labour

Week 6: 1 no. small pickup for welfare maintenance

80 no. 8 wheel wagons for stone Max 30T 9m long x 2.5m wide

3 no. 8 wheel wagons for ready mix concrete Max 25T 9m long x 2.5m wide

5-6 no. panel vans/pickups for labour

Week 7: 1 no. small pickup for welfare maintenance

1 no flatbed HGV for floodlight delivery Max 10T 8m long x 2.2m wide

3 no. 8 wheel wagons for ready mix concrete Max 25T 9m long x 2.5m wide

5-6 no. panel vans/pickups for labour

Week 8: 1 no. small pickup for welfare maintenance

2 no flatbed HGVs for fencing delivery Max 10T 8m long x 2.2m wide

40 no. 8 wheel wagons for tarmac Max 30T 9m long x 2.5m wide

5-6 no. panel vans/pickups for labour

Week 9: 1 no. small pickup for welfare maintenance

5-6 no. panel vans/pickups for labour

Week 10: 1 no. small pickup for welfare maintenance

5-6 no. panel vans/pickups for labour

Week 11: 1 no. small pickup for welfare maintenance

2 no artic HGVs for shockpad delivery Max 40T 14m long x 2.5m wide

5-6 no. panel vans/pickups for labour

Week 12: 1 no. small pickup for welfare maintenance

2 no artic HGVs for surface delivery Max 40T 14m long x 2.5m wide

5-6 no. panel vans/pickups for labour

Merchant Taylors' School - Synthetic Turf Pitch Construction

Construction Management Plan

Week 13: 1 no. small pickup for welfare maintenance

5-6 no. panel vans/pickups for labour

Week 14: 1 no. small pickup for welfare maintenance

3no artic HGVs for sand delivery

Max 40T 14m long x 2.5m wide

5-6 no. panel vans/pickups for labour

Week 15: 1 no. small pickup for welfare maintenance

2 no. 8 wheel wagons for tarmac

Max 30T 9m long x 2.5m wide

5-6 no. panel vans/pickups for labour

Week 16: 1 no. small pickup for welfare maintenance

2 no. flatbed HGVs for equipment delivery

Max 10T 8m long x 2.2m wide

5-6 no. panel vans/pickups for labour

Week 17: 1 no. small pickup for welfare maintenance

3 no. flatbed HGVs to clear site

Max 10T 8m long x 2.2m wide

5-6 no. panel vans/pickups for labour

Merchant Taylors' School - Synthetic Turf Pitch Construction

Construction Management Plan

APPENDIX D

Construction Management Plan

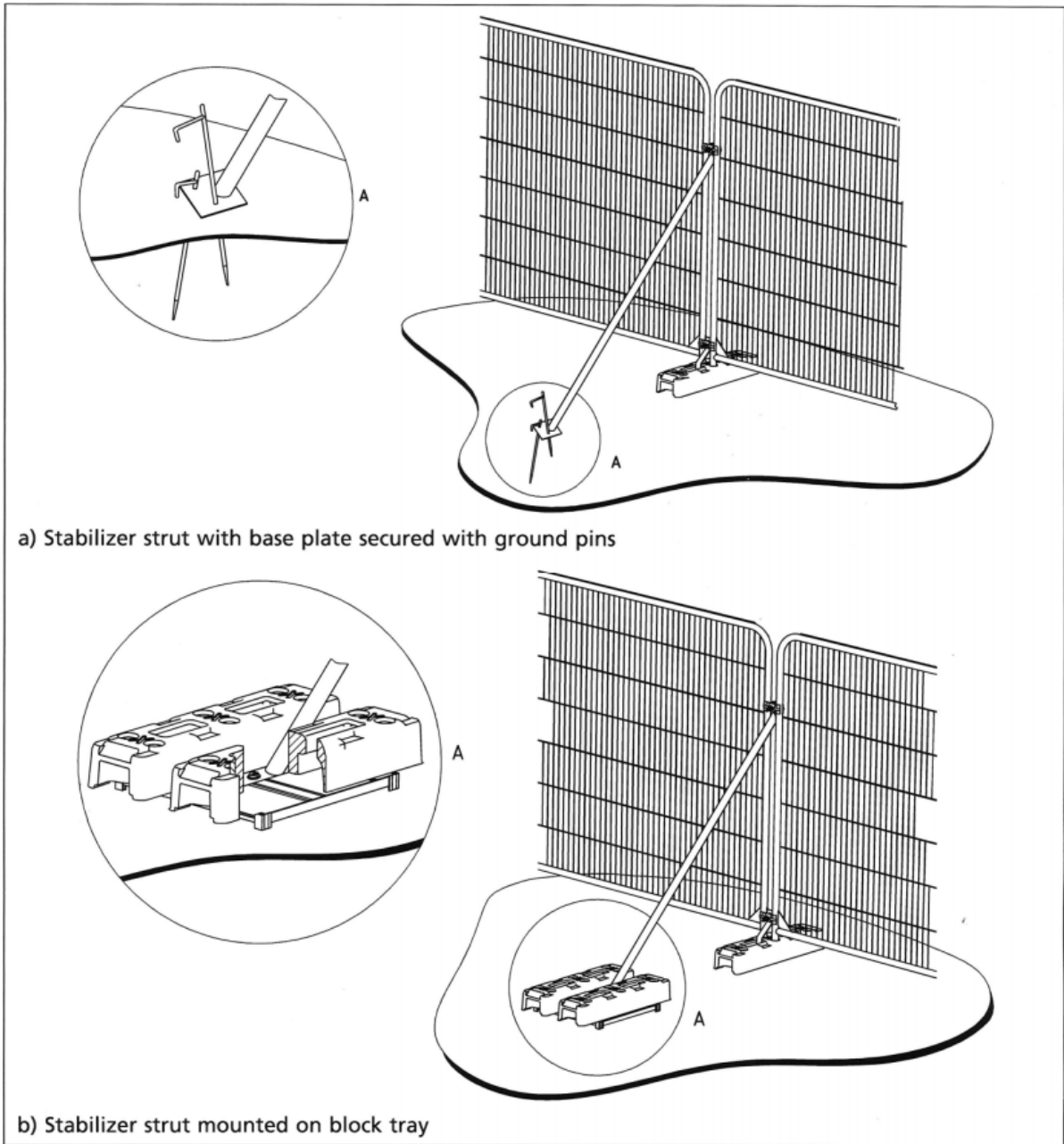


Figure 2: 'Examples of above-ground stabilisation systems'.

TREE PROTECTION ZONE
NO STORAGE OR OPERATIONS WITHIN THIS AREA

KEEP OUT

RESTRICTED ACCESS
NO VEHICLES
NO STORAGE OF MATERIALS

REPORT TREE DAMAGE TO
ADSUM SPORT AND PLAY LIMITED

ON

07517 470852