

Utilities Search Report



Wednesday, 01 Nov 2023
Earth Science Partnership Ltd
db-8711
db-11952
12 Clive Road

91 Market Street Hoylake Wirral CH47 5AA
Tel. 0151 632 5142
enquiries@cornerstoneprojects.co.uk
www.cornerstoneprojects.co.uk
VAT Reg. No. 851 4941 19
Company No. 5132353

Table of contents:

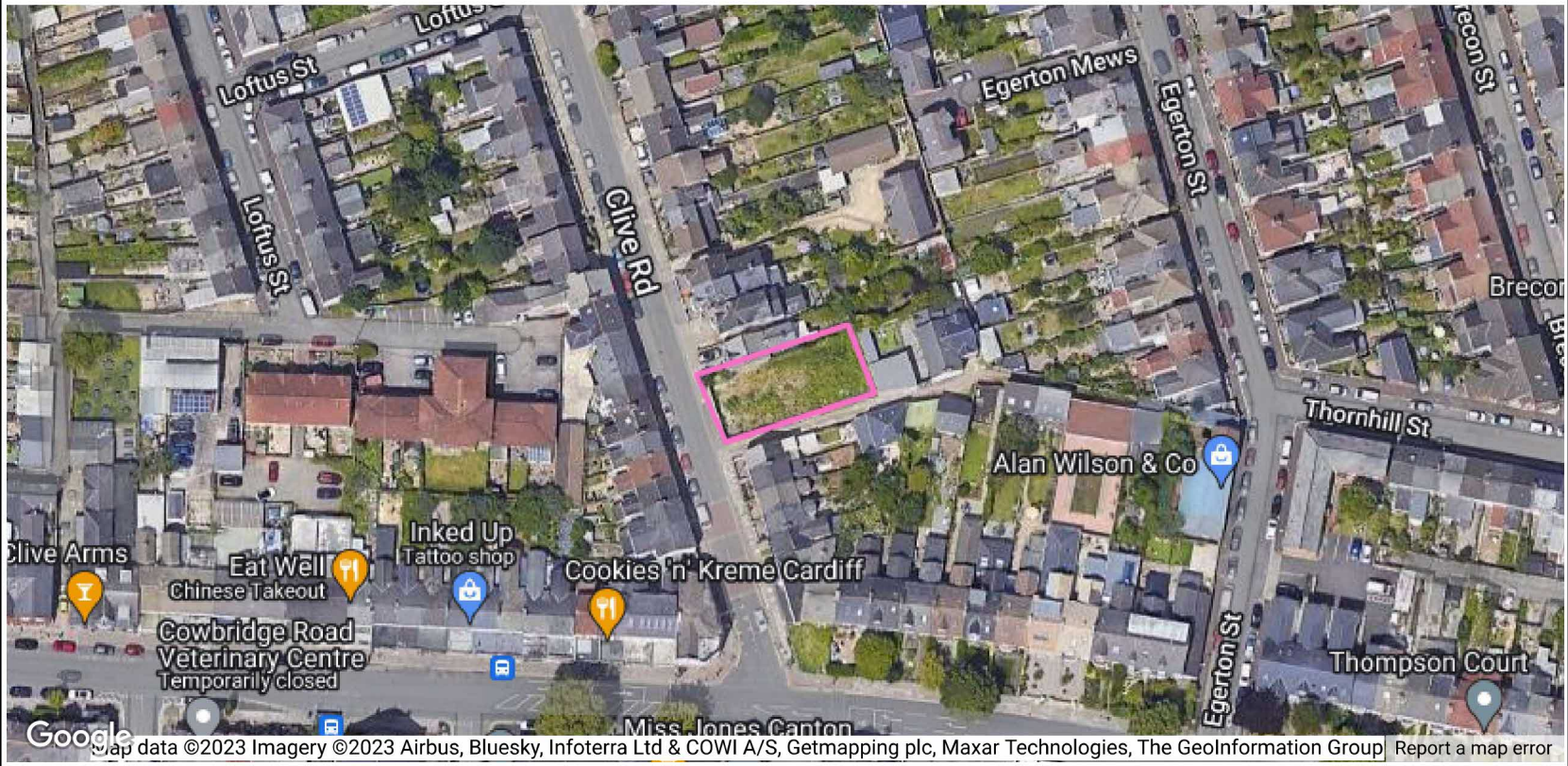
Utility / Service	Included	Utility / Service	Included
Basic Search		Independent Utilities	
Gas	Yes	GTC	Not Requested
Water	Yes	Last Mile	Not Requested
Sewers	Yes	SSE	Not Requested
BT	Yes	Harlaxton	Not Requested
Electricity	Yes	Utility Assets	Not Requested
3rd Party Searches*	Yes	UK Power Distribution	Not Requested
		Albion Water	Not Requested
Cable Search		ESP	Not Requested
Vodafone	Not Requested	Fulcrum Pipelines	Not Requested
Virgin Media	Not Requested	Energy Assets	Not Requested
BSkyB	Not Requested	ENGIE	Not Requested
EXA Infrastructure	Not Requested	Leep Utilities	Not Requested
Colt	Not Requested	Eclipse Power Networks	Not Requested
Sota	Not Requested		
CGI Logica	Not Requested	Others	
Neos Networks	Not Requested	CAD Pack	Not Requested
City Fibre	Not Requested	Smart pdf	Not Requested
Arelion frmly Telia	Not Requested	CA & EA Search	Not Requested
Lumen Technologies**	Not Requested		
KCom	Not Requested		
Verizon	Not Requested		
Zayo Group	Not Requested		
Tata Communications	Not Requested		
Gamma	Not Requested		
Gigaclear Plc	Not Requested		
*Includes Utility and Linesearch			
** Formerly CenturyLink UK Ltd, Level3, GC(UK) Ltd, GC PEC, Fibernet UK Ltd & Fibrespan			
NB: All plans / responses are valid for a maximum of three months unless noted otherwise			

Order Summary

Summary of your utility search details:

Site Name	12 Clive Road	
Site Ref	db-8711	
Address	12 Clive Road, Cardiff, Cardiff, CF5 1HJ	
Postcode	CF5 1HJ	
Grid Ref	E 316004	N 176716

Area Covered



Options Selected		Options Selected	
Gas	✓	Independent utilities search - inc non-chargeable searches	X
Water	✓	Harlaxton	X
Sewer	✓	UK Power Distribution	X
Electric	✓		
BT	✓	Coal Authority search	X
3rd Party searches	✓		
		Other Options	
Cable / Fibre searches inc non-chargeable searches	X	CAD Pack	X
Virgin Media	X	CAD OS mapping	X
Vodafone	X	Smart pdf	X
		Instant Access Plans	X

GAS

**Company Address**

Wales and West Utilities Ltd,
Wales and West House,
Spooner Close, Celtic,
Springs, Coedkernew,
Newport, NP10 8FZ

Our Ref: 31369610 db-8711

Tuesday, 31 October 2023

Duncan Phillips
91 91 Market Street
Hoylake
MSY
CH47 5AA

Dear Duncan Phillips

Thank you for contacting us regarding Wales & West Utilities equipment at the above site.

I enclose an extract from our mains records of the area covered by your proposals together with a comprehensive list of General Conditions for your guidance. This information is given as a general guide and its accuracy cannot be guaranteed. Service pipes, valves, syphons, stub connections, etc., are not shown but their presence should be anticipated.

Where the Wales & West Utilities (WWU) plan includes a warning label about our higher pressure apparatus you must contact the WWU dig team for further guidance. If it is deemed that a site visit is required for this location we require a minimum of 10 days' notice to arrange a site visit for our engineers to give further guidance. Depending upon the nature of the works the site visit may be deemed chargeable.

No liability of any kind whatsoever is accepted by Wales and West Utilities (WWU), its agents or servants for any error or omission. Please note that all WWU equipment on site should be assumed to be LIVE until proven otherwise.

Safe digging practices, in accordance with HS(G)47, Avoiding Danger from underground services must be used to verify and establish the actual position of mains, pipes, services and other apparatus on site before any mechanical plant is used. It is your responsibility to ensure that this information is provided to all persons (either direct labour or contractors) working for you on or near gas apparatus. Safe working procedures should be defined and practiced.

WWU reserves its position completely to enforce the terms of any easement against the landowner, even if this results in any planning permission granted not being able to be fully implemented.

Wales & West Utilities have no planning objections to these proposals, although it should be noted that Wales & West's apparatus is held pursuant to easements and it has other private law rights in relation to the use of the land in the vicinity of its apparatus. Wales & West's private law land rights are not material planning considerations and therefore no comment is made in relation to those rights and they have no impact on whether or not planning permission should be granted, or whether, if permission is granted, it can lawfully be implemented. It should also be noted that Wales & West's apparatus may be at risk during construction works and should the planning application be approved, then we require the promoter of these works to contact us directly to discuss our requirements in detail. Should diversion works be required these will be fully chargeable.

You must not build over any of our plant or enclose our apparatus.

Where diversions to WWU apparatus are needed to allow change to occur on site, the cost of these alterations may be charged to the persons responsible for the works.

**Company Address**

Wales and West Utilities Ltd,
Wales and West House,
Spooner Close, Celtic,
Springs, Coedkernew,
Newport, NP10 8FZ

If you have requested a new connection the WWU connections team will where necessary prepare detailed proposals and provide a quotation for any necessary alterations and/or development of our equipment on the site.

If you require advice in connection with your proposals please contact the relevant number below.

Yours sincerely,
WWU Dig Team

Gas Emergency Number:

In an emergency call 0800 111 999, 24 hours a day.

Mapping Enquiries:

If you have an enquiry relating to this letter or the attached map plan, please contact us using the following information:

Telephone 02920 278912
Email dig@wwutilities.co.uk

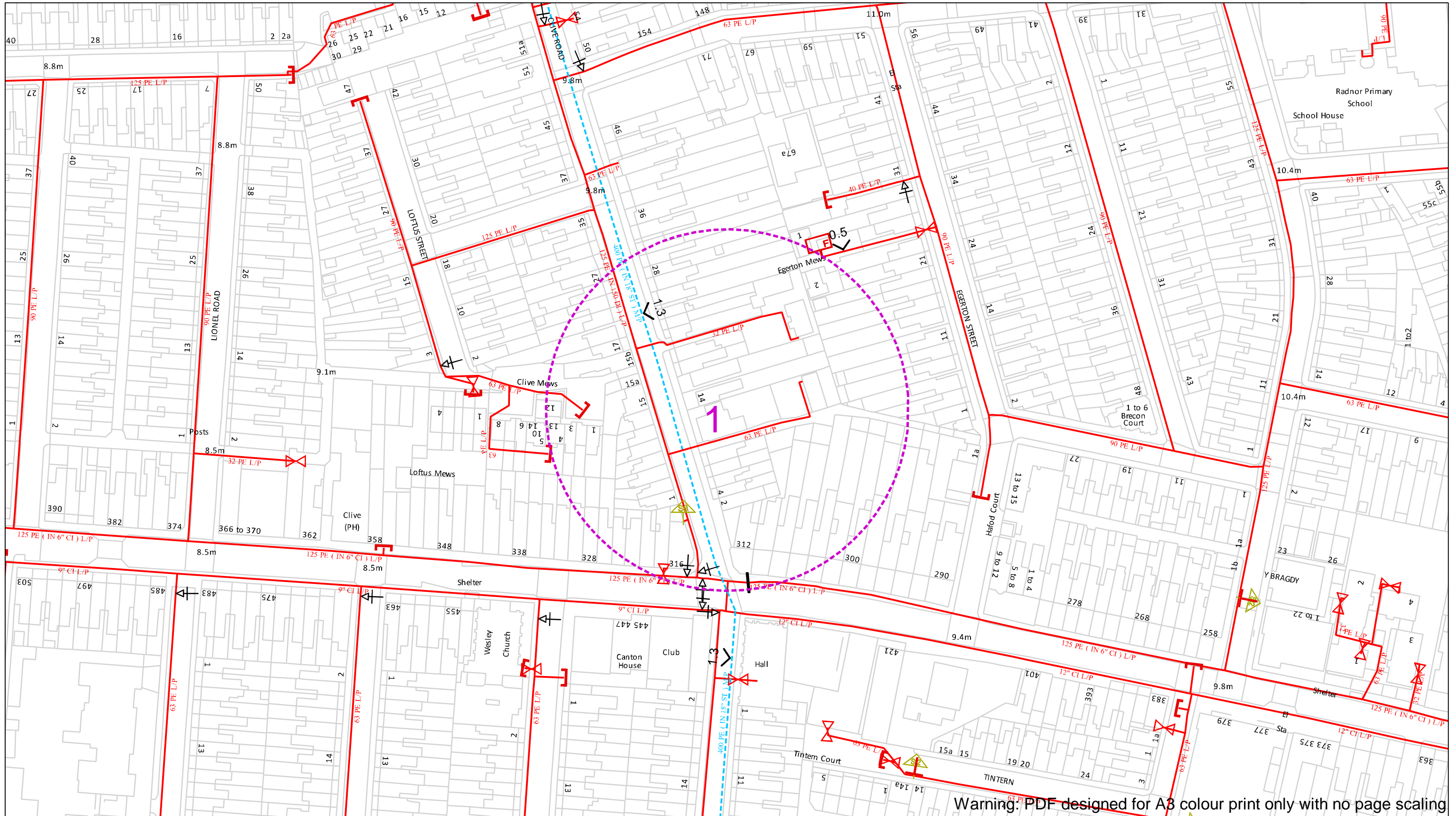
General Enquiries:

If you have a general enquiry, please call us on the following number
All areas 0800 912 29 99

LinesearchbeforeUdig:

If you have an enquiry relating to the use of the LinesearchbeforeUdig website please contact LinesearchbeforeUdig using the following information:

Telephone 0845 437 7365
Email enquiries@linesearchbeforeudig.co.uk
Website www.linesearchbeforeudig.co.uk



Warning: PDF designed for A3 colour print only with no page scaling

Contact Us
 Mapping Enquiries: 02920 278 912
 General Enquiries: 0800 912 2999

Date Requested: 31/10/2023
 Job Reference: 31369610
 Site Location: 316004 176714

Requested by:
 Mr Duncan Phillips
 Your Scheme/Reference: db-8711

Scale: 1:1250 (When plotted at A3)

EXTREME CAUTION. Major Accident Hazard Pipeline in Vicinity
****RISK OF DEATH OR SERIOUS INJURY****
 Prior to excavation starting you must contact the plant protection team on 02920 278912

IMPORTANT NOTICES

This information is given as a guide only and its accuracy cannot be guaranteed
 The plan only shows those pipes owned by Wales & West Utilities (WUU) as its role as a licensed Gas Transporter
 Service pipes, valves, syphons, stub connections etc. may not be shown but their presence should be anticipated
 You must use safe digging practices in accordance with HS(G)47 to establish the actual position of mains, services and other apparatus before any mechanical excavation is used
 It is your responsibility to ensure this information is provided to all persons working near our plant
 If in doubt call the WUU dig team on 02920 278912

In case of an emergency call 0800 111 999

100m

	Dig Sites		Area:		Line:
	Low Pressure (LP) 21mbar – 75mbar		Medium Pressure (MP) 350mbar – 2bar		Intermediate Pressure (IP) 2bar – 7bar
	High Pressure (HP) >7bar				

	Line/Fire Valve
	Governor Station
	Change of Diameter
	End Cap
	Depth of cover

WALES & WEST UTILITIES

Smell gas?
 Call the Gas Emergency Service on 0800 111 999.

Dial before you dig

We need 10 days' notice

Go ahead
 Done your research? Now you can dig safely.

Investigate
 Before you dig, make sure you know what's below.

Dial
 Call 029 2027 8912 before you start work.

Wales & West Utilities Limited

General Conditions to be observed for the Protection of Apparatus and the Prevention of Disruption to Gas Supplies.

General conditions affecting the design, construction or maintenance of services and/or structures or other works in the vicinity of Wales & West Utilities (WWU) plant, pipelines and associated installations:

These general conditions apply only to the gas apparatus and pipes operated by WWU. It is possible that there may be other gas transporters with apparatus in the vicinity, therefore you should ensure that you have made enquiries of them and have complied with their requirements.

1. GRAPHIC REPRESENTATION OF GAS MAINS

Any plans supplied or marked up by WWU will indicate the **APPROXIMATE** location of its apparatus. This information is provided as a general guide only; its accuracy cannot be guaranteed and is given without obligation or warranty. Service pipes are not shown but their presence should be anticipated. No liability whatsoever is accepted by WWU, its agents or servants for any error, omission, discrepancy or deviation. Plans on site should be current, i.e. no older than 28 days from the date of issue. Gas pipes owned by other Gas Transporters, or otherwise privately owned, may be present in this area (pink areas indicated on our plans). Information with regard to such pipes should be obtained from the relevant owners.

Should you require assistance on site locating WWU apparatus, please contact our Plant Protection Team on **02920 278912**.

2. METHODS OF WORKING

The following methods of work shall not normally be permitted within the limits of distance indicated (relative to the established pipe position). Any variances must have consent from WWU before works commence on site:

Mechanical Excavation	3m (1m for low pressure mains)	Hydraulic Testing	8 m
Piling / Pile removing / Boring	15m	Welding or other hot works*	15m
Directional Drill Operations	15m	Explosives	250m

* NOTE: Welding or other hot works involving naked flames shall be carried out at a safe distance to the satisfaction of a WWU Engineer. A check should be made prior to the commencement of works, to ensure a gas free atmosphere exists. It is also necessary to monitor the atmosphere at regular intervals for the duration of the works. In no case shall such activities take place in any Wales & West Utilities Easement without the written consent and in the presence of a WWU representative.

WWU must be consulted prior to carrying out any excavation work within **10m** of any above or below ground gas installations or pipeline. No excavation works may commence within **50m** of a High Pressure or Very High Pressure Pipeline unless the pipeline has been located by tracing and its precise route identified.

In addition to the above methods of working, WWU must be contacted prior to any External Wall Installation (EWI) schemes, proposed solar farms and wind turbine installations.

No work shall be undertaken near, nor heavy plant or equipment moved over, any gas pipeline or apparatus until all of the conditions specified by WWU have been complied with.

Where WWU have apparatus in the vicinity of your work, any damage to it could have serious consequences. In view of this and in the interests of safety, a meeting should be arranged before the commencement of work on site between WWU representatives, representatives of the promoting authority, the contractors and any other interested parties. At this meeting the suggested program of site works and plant safety should be discussed. It is essential that this meeting is convened well in advance of commencement on site. Access to WWU plant and facilities for inspection by WWU staff must not be affected. Where formal consent has been given, **A MINIMUM OF SEVEN DAYS NOTICE IS REQUIRED** before carrying out work in WWU easements, or the appropriate notice under the New Roads & Street Works Act (NRSWA) where existing plant is situated within the public highway.

Further guidance can also be sought from the document **HS(G)47 – Avoiding Danger from Underground Services** from the HSE website.

3. PROXIMITY OF OTHER PLANT

A minimum clearance of **600 millimetres (mm)** should be allowed between all plant being installed and an existing gas main operating above 2 bar medium pressure (MP), whether the adjacent plant is parallel to or crossing the gas pipe. For mains operating at MP or below, this distance can be reduced to 300mm. **NO APPARATUS SHOULD BE LAID OVER AND ALONG THE LINE OF A GAS PIPE, IRRESPECTIVE OF CLEARANCE.**

No manhole or chamber shall be built over or around a gas pipe and no work should be carried out which results in a reduction of cover or protection over a pipe without consultation with and the agreement of WWU staff.

4. PROTECTION

Where any works cross or run in close proximity to WWU apparatus, periodic visits must be made by a WWU engineer. His requests for protection or support to the apparatus shall be immediately observed.

Suitably designed crossing points are to be constructed to the satisfaction of a WWU Engineer. These crossing points shall be clearly indicated by the erection of bunting and crossings at other places should be prevented.

Backfill material adjacent to WWU apparatus shall be soft fill or sand, containing no stones, bricks, or lumps of concrete etc., placed to a minimum 150mm around the mains and is to be well compacted by hand. No power consolidation shall take place above the main until 300mm of soft fill has been compacted by hand.

Wales & West Utilities Limited

5. DAMAGE TO COATINGS

Where a gas pipe is coated with special wrapping and this is damaged, even to a minor extent, WWU must be notified so that repairs can be made to prevent future corrosion and subsequent leakage. **WHERE MINOR DAMAGE TO COATING IS REPORTED TO WWU PRIOR TO BACKFILL, THE NECESSARY REPAIR WILL BE MADE FREE OF CHARGE.**

6. CATHODIC PROTECTION

Where WWU apparatus is cathodically protected either by sacrificial anode or impressed current systems and where new apparatus is to be laid and is to be similarly protected, WWU will require to carry out interaction tests to determine whether its own system is adversely affected. The cost of any mutually agreed remedial action will be recharged to the authority installing the new apparatus. If any bond wires, test leads etc., used in connection with cathodic protection systems are damaged or found to be in poor condition, broken or disconnected, WWU must be notified prior to backfilling so that a repair can be made.

7. HOT WORKS

Even when a gas free atmosphere exists care must be taken when carrying out hot works in close proximity to gas plant in order to ensure that no damage occurs. Particular care must be taken to avoid damage by heat or naked flames to plastic gas pipes or to the protective coatings on other pipes.

8. DEMOLITION

Live gas services must be disconnected **PRIOR** to demolishing any property, arrangements must be made for WWU to check for the presence of any live gas services.

9. TREE PLANTING

WWU must be contacted prior to all tree-planting works above or near our apparatus. Further information can then be made available.

10. DEEP EXCAVATIONS

Any work involving deep excavations (1.5m or more) will be subject to the "Model Consultative Procedure for Pipeline Construction involving Deep Excavations". This may require the diversion of WWU apparatus prior to the commencement of your works. Detailed plans and cross sections will be required in order to determine the effect of these works on WWU apparatus.

11. RENEWABLE ENERGY INSTALLATIONS

Wind Turbines – WWU must be advised of any planned development of wind turbines in the vicinity of an above 2 bar gas pipelines to ensure the development does not impact on the future safe operation of the pipeline. Industry guidance states that any wind turbine must be sited no closer than 1.5 times the proposed height of the turbine mast away from the nearest edge of the pipeline.

Solar Farms – WWU must be contacted regarding planned solar farms being considered in the vicinity of WWU gas pipelines.

EWI – WWU must be contacted regarding any EWI scheme to ensure the scheme does not impact upon WWU's apparatus.

12. LEAKAGE FROM GAS MAINS OR SERVICES

If damage or leakage is caused or an escape of gas is smelt or suspected the following action should be taken at once:

- Remove all personnel from the immediate vicinity of the escape.
- Inform the 24hr Gas Emergency Service on **0800 111 999**
- Prevent any approach by the public, prohibit smoking, and extinguish all naked flames or other sources of ignition for at least 15 metres from the leakage. Do not operate any electrical switches in the vicinity of the escape.
- Assist gas personnel, Police and/or Fire Services as requested.

**IN THE EVENT OF A LEAK, OBSERVE THE ABOVE BUT DO NOT ATTEMPT TO SEAL THE LEAK
REMEMBER - IF IN DOUBT; SEEK ADVICE FROM WWU**

13. BUILDING PROXIMITIES

There are minimum proximity distances for buildings from WWU mains depending on both the operating pressure and the material of the main. Advice should be sought from WWU prior to building works taking place to confirm these distances. For High Pressure pipelines you must seek further guidance from the HSE and Local Authority Planning team regarding their PADHI distances regarding building proximities as these may be in addition to WWU proximity distances for a pipeline.

Temporary buildings should not be placed above any gas pipe or within 3.0 metres of mains operating above 75mbar (medium, intermediate and high pressure mains) during construction activities and in no circumstances should permanent structures be built over any pipe transporting gas.

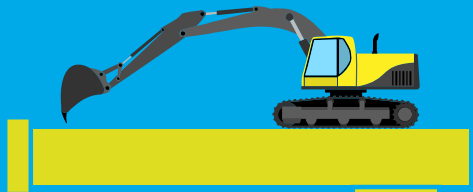
14. SITE RESPONSIBILITIES

All costs incurred by WWU for the repair of direct or consequential damage to gas plant will be rechargeable (with the exception of paragraph 5). WWU reserves the right to divert any affected apparatus or alternatively specify suitable protection of its apparatus. If proved necessary during the course of site works, the cost of which will be chargeable.

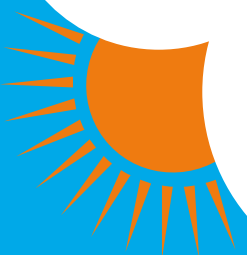
The above requirements do not relieve you of the responsibility of taking all precautions necessary to safeguard the Company's plant and to avoid risk to persons and property. The persons for whom the works are being undertaken, their servants, agents and contractors shall indemnify WWU servants, agents and contractors against any loss, damage, expenses, claims and actions incurred or brought against Wales & West Utilities, its servants, agents and contractors in consequence of the provision of these works and activities associated therewith or ancillary thereto.

KEY TO MAPS

LP	Low Pressure	CI	Cast Iron
MP	Medium Pressure	SI	Spun Iron
IP	Intermediate Pressure	DI	Ductile Iron
HP	High Pressure	PE	Polyethylene
		ST	Steel



We're here to
help



Dial
before
you dig

We need
10 days'
notice

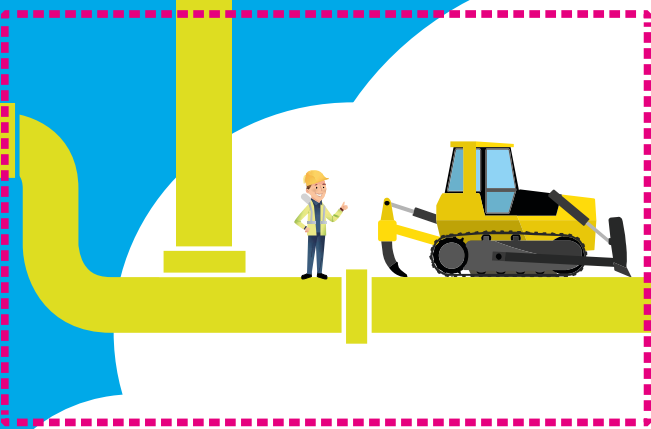
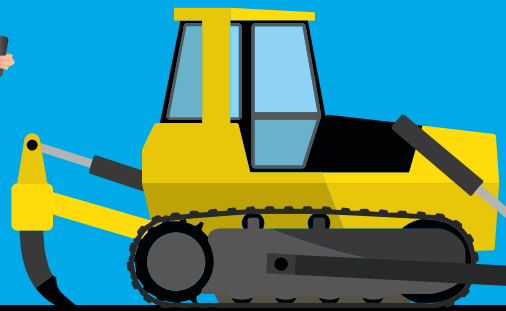
Every day, underground gas pipes get damaged by people digging without knowing what's below. This can be catastrophic. It might cause serious injury to you and others around you. The costs of repair, fines and fees can be huge. Your project will be delayed and your reputation damaged.

We have designed this leaflet to help you dig safely. And the first thing to do –long before you start work –is call us.

What's the number?
029 2027 8912

? Need help or advice?
Call our Plant Protection team on
029 2027 8912
or email dig@wwutilities.co.uk

! Smell gas?
Call the Gas Emergency Service on
0800 111 999.



CARD POSITION (DO NOT PRINT)



-  dig@wwutilities.co.uk
-  029 2027 8912
-  www.wwutilities.co.uk
-  facebook.com/wwutilities
-  @WWUtilities



Dial
Investigate
Go ahead

YOUR GAS EMERGENCY
AND PIPELINE SERVICE



Can you DIG it?

We bring the gas to homes and businesses across Wales and the south west of England. We invest money, time and effort every year to make sure our pipelines are protected – but the biggest danger to our network is you.

Dis for Dial

Digging can be dangerous. Hit a gas pipe and you might cause a gas leak, a fire or explosion.

So phone us first on 029 2027 8912 or email dig@wwutilities.co.uk

- You can find out where our pipes are.
- You need to give us 10 working days' notice before you start working.



I is for Investigate

It's the only way to stay safe

- Before you start work, you must get a copy of our up-to-date gas plans and General Conditions and keep them with you on site.
- Use our online mapping service to find the mains pipes under your land.
- Working near a medium-, or intermediate- or high-pressure gas pipe? You might need a site visit – call us so we can arrange it.
- Plan ahead – we need at least 10 days' notice for a site visit.
- You'll also need our publication 'SSW22 Safe working in the vicinity of high-pressure pipelines and associated installations'.
- Remember, you can't work on a Wales & West Utilities wayleave or easement (land which we have rights over to maintain our gas network) without written permission.
- And you can't work near or move heavy equipment over any gas pipeline until all our conditions have been met and we agree your method of working.
- Watch the video on our website to find out more.



G is for Go ahead

- Make sure you have our up-to-date gas plans on site.
- Need extra advice? Call our Plant Protection team on 029 2027 8912 or email dig@wwutilities.co.uk
- Use cable- and pipe-locating devices.
- Use safe digging practices, taking every precaution to avoid damaging gas pipes, damaging yourself and damaging your bank balance. You will be billed for any costs if something goes wrong.
- If in doubt, phone us again. We're happy to help.

We need **10 days'** notice



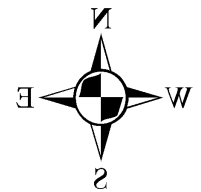
Smell gas?

Our Gas Emergency Service is on call 24 hours a day, seven days a week, 365 days a year.

If you cause a gas leak, or think the network might be leaking, call the Gas Emergency Service immediately on 0800 111 999.

- Get everyone away from the leak.
- Ask everyone in nearby buildings to leave until we're sure it's safe.
- Put out all naked flames and other sources of ignition and make sure no one smokes within 15 metres of the leak.
- Don't try to fix the leak by filling the hole, as gas may enter buildings.
- Don't try to operate any valves.
- Don't let anyone go near the leak.
- Help our engineers, the police or fire services if they ask.

WATER



LEGEND

Stop tap		Clean network:	
Water Treatment Works		Sluice valve	
Water Pumping Station		Pressure reducing valve	
Existing main		Meter	
Non-operational main		Bulk meter	
Raw Water		Hydrant	
Cap end		Cap end	
Air valve		Air valve	

NB: Water main symbol colour indicates the type:
 LIGHT BLUE - Trunk
 DARK BLUE - Distribution
 YELLOW - Raw Water

Notes:

Whilst every reasonable effort has been taken to correctly record the pipe material of DCWW assets, there is a possibility that in some cases pipe material (other than Asbestos Cement or Pitch Fibre) may be found to be asbestos cement (AC) or Pitch Fibre (PF). It is therefore advisable that the possible presence of AC or PF pipes be anticipated and considered as part of any risk assessment prior to excavation.

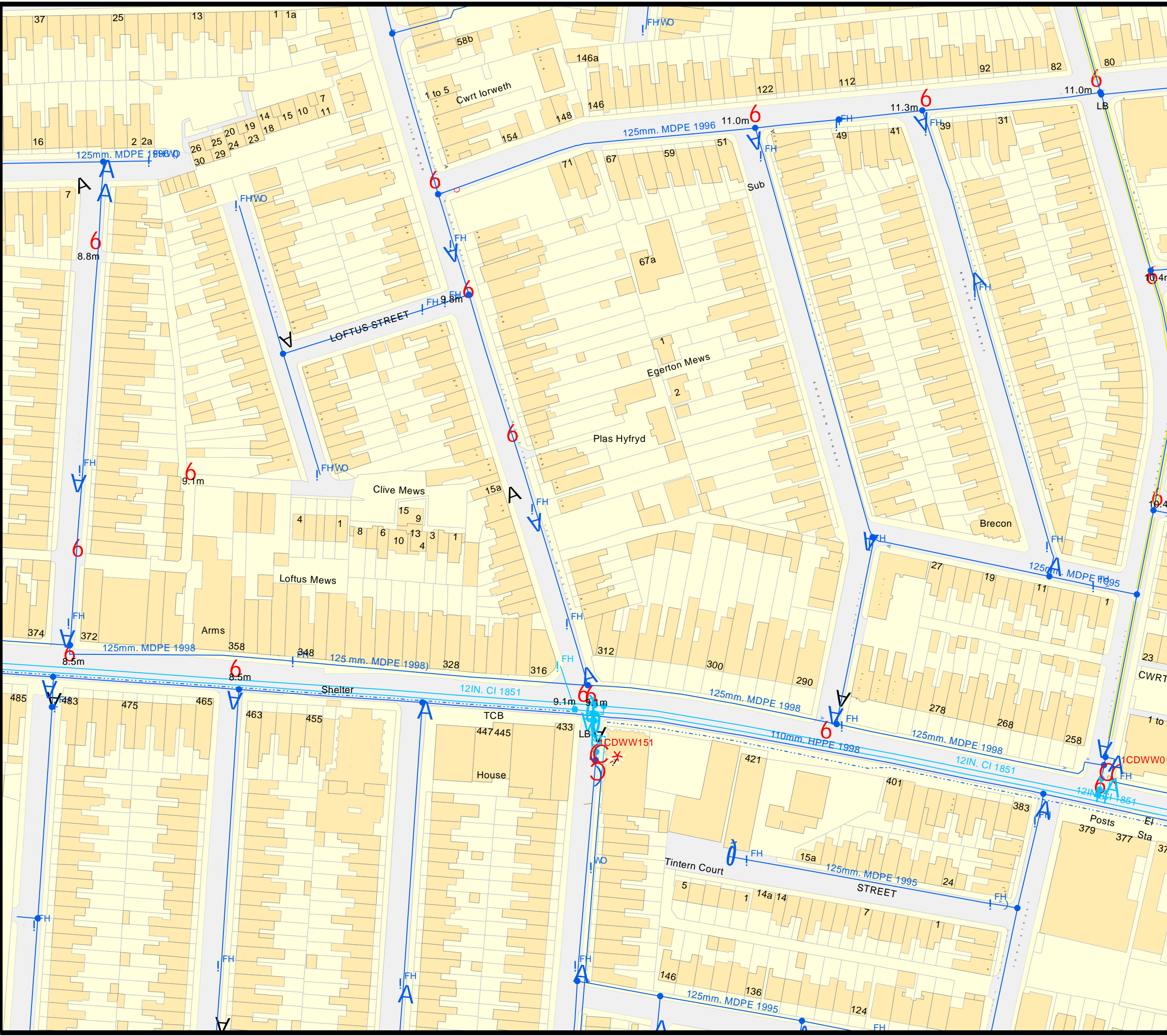
Dŵr Cymru Cyfyngedig (the Company) gives this information as to the position of its underground apparatus by way of general guidance only and on the strict understanding that it is based on the best information available and no warranty as to its correctness is relied upon in the event of excavations or other works made in the vicinity of the company's apparatus. The onus of locating apparatus before carrying out any excavations rests entirely on you. The information which is supplied by the Company, is done so in accordance with statutory requirements of sections 198 and 199 of the Water Industry Act 1991 which is based upon the best information available and, in particular, but without prejudice to the generality of the foregoing, it should be noted that the records that are available to the Company may not disclose the existence of a water main, service pipe, sewer, lateral drain or disposal main and any associated apparatus laid before 1 September 1989, or, if they do, the particulars thereof including their position underground may not be accurate. It must be understood that the furnishing of this information is entirely without prejudice to the provision of the New Roads and Street Works Act 1991 and the Company's right to be compensated for any damage to its apparatus.

Service pipes are not generally shown but their presence should be anticipated.

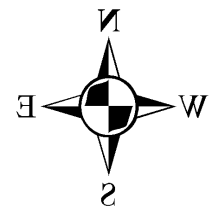
EXACT LOCATIONS OF ALL APPARATUS TO BE DETERMINED ON SITE.

Reproduced by permission of the Ordnance Survey on behalf of HMSO. © Crown copyright and database right 2017. All rights reserved. Ordnance Survey Licence number 100019534

Map Ref: 316004,176716
 Map scale: 1:1250
 Printed by: Zara Howells
 Printed on: 01 Nov 2023



SEWER



LEGEND (Representative of most common features)

Manhole	VC 6 IN	Private Sewer	Public Sewer
Manhole	VC 150 mm	Private Sewer	Public Sewer
Manhole	VC 225 mm	Private Sewer	Public Sewer
Manhole	VC 300 mm	Private Sewer	Public Sewer
Manhole	VC 450 mm	Private Sewer	Public Sewer
Manhole	VC 600 mm	Private Sewer	Public Sewer
Manhole	VC 750 mm	Private Sewer	Public Sewer
Manhole	VC 900 mm	Private Sewer	Public Sewer
Manhole	VC 1050 mm	Private Sewer	Public Sewer
Manhole	VC 1200 mm	Private Sewer	Public Sewer
Manhole	VC 1350 mm	Private Sewer	Public Sewer
Manhole	VC 1500 mm	Private Sewer	Public Sewer
Manhole	VC 1650 mm	Private Sewer	Public Sewer
Manhole	VC 1800 mm	Private Sewer	Public Sewer
Manhole	VC 1950 mm	Private Sewer	Public Sewer
Manhole	VC 2100 mm	Private Sewer	Public Sewer
Manhole	VC 2250 mm	Private Sewer	Public Sewer
Manhole	VC 2400 mm	Private Sewer	Public Sewer
Manhole	VC 2550 mm	Private Sewer	Public Sewer
Manhole	VC 2700 mm	Private Sewer	Public Sewer
Manhole	VC 2850 mm	Private Sewer	Public Sewer
Manhole	VC 3000 mm	Private Sewer	Public Sewer
Manhole	VC 3150 mm	Private Sewer	Public Sewer
Manhole	VC 3300 mm	Private Sewer	Public Sewer
Manhole	VC 3450 mm	Private Sewer	Public Sewer
Manhole	VC 3600 mm	Private Sewer	Public Sewer
Manhole	VC 3750 mm	Private Sewer	Public Sewer
Manhole	VC 3900 mm	Private Sewer	Public Sewer
Manhole	VC 4050 mm	Private Sewer	Public Sewer
Manhole	VC 4200 mm	Private Sewer	Public Sewer
Manhole	VC 4350 mm	Private Sewer	Public Sewer
Manhole	VC 4500 mm	Private Sewer	Public Sewer
Manhole	VC 4650 mm	Private Sewer	Public Sewer
Manhole	VC 4800 mm	Private Sewer	Public Sewer
Manhole	VC 4950 mm	Private Sewer	Public Sewer
Manhole	VC 5100 mm	Private Sewer	Public Sewer
Manhole	VC 5250 mm	Private Sewer	Public Sewer
Manhole	VC 5400 mm	Private Sewer	Public Sewer
Manhole	VC 5550 mm	Private Sewer	Public Sewer
Manhole	VC 5700 mm	Private Sewer	Public Sewer
Manhole	VC 5850 mm	Private Sewer	Public Sewer
Manhole	VC 6000 mm	Private Sewer	Public Sewer
Manhole	VC 6150 mm	Private Sewer	Public Sewer
Manhole	VC 6300 mm	Private Sewer	Public Sewer
Manhole	VC 6450 mm	Private Sewer	Public Sewer
Manhole	VC 6600 mm	Private Sewer	Public Sewer
Manhole	VC 6750 mm	Private Sewer	Public Sewer
Manhole	VC 6900 mm	Private Sewer	Public Sewer
Manhole	VC 7050 mm	Private Sewer	Public Sewer
Manhole	VC 7200 mm	Private Sewer	Public Sewer
Manhole	VC 7350 mm	Private Sewer	Public Sewer
Manhole	VC 7500 mm	Private Sewer	Public Sewer
Manhole	VC 7650 mm	Private Sewer	Public Sewer
Manhole	VC 7800 mm	Private Sewer	Public Sewer
Manhole	VC 7950 mm	Private Sewer	Public Sewer
Manhole	VC 8100 mm	Private Sewer	Public Sewer
Manhole	VC 8250 mm	Private Sewer	Public Sewer
Manhole	VC 8400 mm	Private Sewer	Public Sewer
Manhole	VC 8550 mm	Private Sewer	Public Sewer
Manhole	VC 8700 mm	Private Sewer	Public Sewer
Manhole	VC 8850 mm	Private Sewer	Public Sewer
Manhole	VC 9000 mm	Private Sewer	Public Sewer
Manhole	VC 9150 mm	Private Sewer	Public Sewer
Manhole	VC 9300 mm	Private Sewer	Public Sewer
Manhole	VC 9450 mm	Private Sewer	Public Sewer
Manhole	VC 9600 mm	Private Sewer	Public Sewer
Manhole	VC 9750 mm	Private Sewer	Public Sewer
Manhole	VC 9900 mm	Private Sewer	Public Sewer
Manhole	VC 10050 mm	Private Sewer	Public Sewer
Manhole	VC 10200 mm	Private Sewer	Public Sewer
Manhole	VC 10350 mm	Private Sewer	Public Sewer
Manhole	VC 10500 mm	Private Sewer	Public Sewer
Manhole	VC 10650 mm	Private Sewer	Public Sewer
Manhole	VC 10800 mm	Private Sewer	Public Sewer
Manhole	VC 10950 mm	Private Sewer	Public Sewer
Manhole	VC 11100 mm	Private Sewer	Public Sewer
Manhole	VC 11250 mm	Private Sewer	Public Sewer
Manhole	VC 11400 mm	Private Sewer	Public Sewer
Manhole	VC 11550 mm	Private Sewer	Public Sewer
Manhole	VC 11700 mm	Private Sewer	Public Sewer
Manhole	VC 11850 mm	Private Sewer	Public Sewer
Manhole	VC 12000 mm	Private Sewer	Public Sewer
Manhole	VC 12150 mm	Private Sewer	Public Sewer
Manhole	VC 12300 mm	Private Sewer	Public Sewer
Manhole	VC 12450 mm	Private Sewer	Public Sewer
Manhole	VC 12600 mm	Private Sewer	Public Sewer
Manhole	VC 12750 mm	Private Sewer	Public Sewer
Manhole	VC 12900 mm	Private Sewer	Public Sewer
Manhole	VC 13050 mm	Private Sewer	Public Sewer
Manhole	VC 13200 mm	Private Sewer	Public Sewer
Manhole	VC 13350 mm	Private Sewer	Public Sewer
Manhole	VC 13500 mm	Private Sewer	Public Sewer
Manhole	VC 13650 mm	Private Sewer	Public Sewer
Manhole	VC 13800 mm	Private Sewer	Public Sewer
Manhole	VC 13950 mm	Private Sewer	Public Sewer
Manhole	VC 14100 mm	Private Sewer	Public Sewer
Manhole	VC 14250 mm	Private Sewer	Public Sewer
Manhole	VC 14400 mm	Private Sewer	Public Sewer
Manhole	VC 14550 mm	Private Sewer	Public Sewer
Manhole	VC 14700 mm	Private Sewer	Public Sewer
Manhole	VC 14850 mm	Private Sewer	Public Sewer
Manhole	VC 15000 mm	Private Sewer	Public Sewer
Manhole	VC 15150 mm	Private Sewer	Public Sewer
Manhole	VC 15300 mm	Private Sewer	Public Sewer
Manhole	VC 15450 mm	Private Sewer	Public Sewer
Manhole	VC 15600 mm	Private Sewer	Public Sewer
Manhole	VC 15750 mm	Private Sewer	Public Sewer
Manhole	VC 15900 mm	Private Sewer	Public Sewer
Manhole	VC 16050 mm	Private Sewer	Public Sewer
Manhole	VC 16200 mm	Private Sewer	Public Sewer
Manhole	VC 16350 mm	Private Sewer	Public Sewer
Manhole	VC 16500 mm	Private Sewer	Public Sewer
Manhole	VC 16650 mm	Private Sewer	Public Sewer
Manhole	VC 16800 mm	Private Sewer	Public Sewer
Manhole	VC 16950 mm	Private Sewer	Public Sewer
Manhole	VC 17100 mm	Private Sewer	Public Sewer
Manhole	VC 17250 mm	Private Sewer	Public Sewer
Manhole	VC 17400 mm	Private Sewer	Public Sewer
Manhole	VC 17550 mm	Private Sewer	Public Sewer
Manhole	VC 17700 mm	Private Sewer	Public Sewer
Manhole	VC 17850 mm	Private Sewer	Public Sewer
Manhole	VC 18000 mm	Private Sewer	Public Sewer
Manhole	VC 18150 mm	Private Sewer	Public Sewer
Manhole	VC 18300 mm	Private Sewer	Public Sewer
Manhole	VC 18450 mm	Private Sewer	Public Sewer
Manhole	VC 18600 mm	Private Sewer	Public Sewer
Manhole	VC 18750 mm	Private Sewer	Public Sewer
Manhole	VC 18900 mm	Private Sewer	Public Sewer
Manhole	VC 19050 mm	Private Sewer	Public Sewer
Manhole	VC 19200 mm	Private Sewer	Public Sewer
Manhole	VC 19350 mm	Private Sewer	Public Sewer
Manhole	VC 19500 mm	Private Sewer	Public Sewer
Manhole	VC 19650 mm	Private Sewer	Public Sewer
Manhole	VC 19800 mm	Private Sewer	Public Sewer
Manhole	VC 19950 mm	Private Sewer	Public Sewer
Manhole	VC 20100 mm	Private Sewer	Public Sewer
Manhole	VC 20250 mm	Private Sewer	Public Sewer
Manhole	VC 20400 mm	Private Sewer	Public Sewer
Manhole	VC 20550 mm	Private Sewer	Public Sewer
Manhole	VC 20700 mm	Private Sewer	Public Sewer
Manhole	VC 20850 mm	Private Sewer	Public Sewer
Manhole	VC 21000 mm	Private Sewer	Public Sewer
Manhole	VC 21150 mm	Private Sewer	Public Sewer
Manhole	VC 21300 mm	Private Sewer	Public Sewer
Manhole	VC 21450 mm	Private Sewer	Public Sewer
Manhole	VC 21600 mm	Private Sewer	Public Sewer
Manhole	VC 21750 mm	Private Sewer	Public Sewer
Manhole	VC 21900 mm	Private Sewer	Public Sewer
Manhole	VC 22050 mm	Private Sewer	Public Sewer
Manhole	VC 22200 mm	Private Sewer	Public Sewer
Manhole	VC 22350 mm	Private Sewer	Public Sewer
Manhole	VC 22500 mm	Private Sewer	Public Sewer
Manhole	VC 22650 mm	Private Sewer	Public Sewer
Manhole	VC 22800 mm	Private Sewer	Public Sewer
Manhole	VC 22950 mm	Private Sewer	Public Sewer
Manhole	VC 23100 mm	Private Sewer	Public Sewer
Manhole	VC 23250 mm	Private Sewer	Public Sewer
Manhole	VC 23400 mm	Private Sewer	Public Sewer
Manhole	VC 23550 mm	Private Sewer	Public Sewer
Manhole	VC 23700 mm	Private Sewer	Public Sewer
Manhole	VC 23850 mm	Private Sewer	Public Sewer
Manhole	VC 24000 mm	Private Sewer	Public Sewer
Manhole	VC 24150 mm	Private Sewer	Public Sewer
Manhole	VC 24300 mm	Private Sewer	Public Sewer
Manhole	VC 24450 mm	Private Sewer	Public Sewer
Manhole	VC 24600 mm	Private Sewer	Public Sewer
Manhole	VC 24750 mm	Private Sewer	Public Sewer
Manhole	VC 24900 mm	Private Sewer	Public Sewer
Manhole	VC 25050 mm	Private Sewer	Public Sewer
Manhole	VC 25200 mm	Private Sewer	Public Sewer
Manhole	VC 25350 mm	Private Sewer	Public Sewer
Manhole	VC 25500 mm	Private Sewer	Public Sewer
Manhole	VC 25650 mm	Private Sewer	Public Sewer
Manhole	VC 25800 mm	Private Sewer	Public Sewer
Manhole	VC 25950 mm	Private Sewer	Public Sewer
Manhole	VC 26100 mm	Private Sewer	Public Sewer
Manhole	VC 26250 mm	Private Sewer	Public Sewer
Manhole	VC 26400 mm	Private Sewer	Public Sewer
Manhole	VC 26550 mm	Private Sewer	Public Sewer
Manhole	VC 26700 mm	Private Sewer	Public Sewer
Manhole	VC 26850 mm	Private Sewer	Public Sewer
Manhole	VC 27000 mm	Private Sewer	Public Sewer
Manhole	VC 27150 mm	Private Sewer	Public Sewer
Manhole	VC 27300 mm	Private Sewer	Public Sewer
Manhole	VC 27450 mm	Private Sewer	Public Sewer
Manhole	VC 27600 mm	Private Sewer	Public Sewer
Manhole	VC 27750 mm	Private Sewer	Public Sewer
Manhole	VC 27900 mm	Private Sewer	Public Sewer
Manhole	VC 28050 mm	Private Sewer	Public Sewer
Manhole	VC 28200 mm	Private Sewer	Public Sewer
Manhole	VC 28350 mm	Private Sewer	Public Sewer
Manhole	VC 28500 mm	Private Sewer	Public Sewer
Manhole	VC 28650 mm	Private Sewer	Public Sewer
Manhole	VC 28800 mm	Private Sewer	Public Sewer
Manhole	VC 28950 mm	Private Sewer	Public Sewer
Manhole	VC 29100 mm	Private Sewer	Public Sewer
Manhole	VC 29250 mm	Private Sewer	Public Sewer
Manhole	VC 29400 mm	Private Sewer	Public Sewer
Manhole	VC 29550 mm	Private Sewer	Public Sewer
Manhole	VC 29700 mm	Private Sewer	Public Sewer
Manhole	VC 29850 mm	Private Sewer	Public Sewer
Manhole	VC 30000 mm	Private Sewer	Public Sewer

Notes:

Whilst every reasonable effort has been taken to correctly record the pipe material of DCWW assets, there is a possibility that in some cases pipe material (other than Asbestos Cement or Pitch Fibre) may be found to be asbestos cement (AC) or Pitch Fibre (PF). It is therefore advisable that the possible presence of AC or PF pipes be anticipated and considered as part of any risk assessment prior to excavation.

Dŵr Cymru Cyfyngedig (the Company) gives this information as to the position of its underground apparatus by way of general guidance only and on the strict understanding that it is based on the best information available and no warranty as to its correctness is relied upon in the event of excavations or other works made in the vicinity of the company's apparatus. The onus of locating apparatus before carrying out any excavations rests entirely on you. The information which is supplied by the Company, is done so in accordance with statutory requirements of sections 198 and 199 of the Water Industry Act 1991 which is based upon the best information available and, in particular, but without prejudice to the generality of the foregoing, it should be noted that the records that are available to the Company may not disclose the existence of a water main, service pipe, sewer, lateral drain or disposal main and any associated apparatus laid before 1 September 1989, or, if they do, the particulars thereof including their position underground may not be accurate. It must be understood that the furnishing of this information is entirely without prejudice to the provision of the New Roads and Street Works Act 1991 and the Company's right to be compensated for any damage to its apparatus.

Service pipes are not generally shown but their presence should be anticipated.

EXACT LOCATIONS OF ALL APPARATUS TO BE DETERMINED ON SITE.

Reproduced by permission of the Ordnance Survey on behalf of HMSO. © Crown copyright and database right 2017. All rights reserved. Ordnance Survey Licence number 100019534

Map Ref: 316004,176716
 Map scale: 1:1250
 Printed by: Zara Howells
 Printed on: 01 Nov 2023

BT

Our Ref: Ref shown on map

email: nnhc@openreach.co.uk

Date of issue shown on map

Dear Customer,

NR & SW ACT 1991 – PROPOSED WORKS AT:

Prior to commencement of work: for free onsite guidance and accurate up to date location of BT plant please contact our Plant Protection Service by the following methods

Email Dial before you dig CBYD@openreach.co.uk

Visit the website www.openreach.co.uk/cbyd

Thank you for your request of describing the above proposals.

Enclosed are copies of our drawing marked up to show the approximate locations of BT apparatus which is present in the immediate vicinity of your works. It is intended for general guidance only. No guarantee is given of its accuracy.

It should not be relied upon in the event of excavations or other works made near to British Telecommunications plc apparatus which may exist at various depths and may deviate from the marked route.

To avoid damage it is recommended that mechanical excavators or borers are not used within 600mm of British Telecommunications plc plant. If scaffolding is erected, please ensure that our equipment is not enclosed, blocked, covered or otherwise obstructed by the scaffolding.

In the event of BT apparatus being in the area of works we recommend that your plant/vehicle crossing is either resited, or apply for a budget estimate by submitting detailed plans to the above address, these will be forwarded to the appropriate department for their comments.

Please ensure you quote our reference on any future correspondence.

Yours faithfully,

Openreach Plant Maps Requested

NewSite Office (addresses can be found on [the New Developments contact page](#))

Dear Sir/Madam,

You have downloaded copies of our drawings marked up to show the approximate location of Openreach apparatus, which is present in the immediate vicinity of your works. It is intended for general guidance only. No guarantee is given of its accuracy. It should not be relied upon in the event of excavations or other works made near to Openreach apparatus, which may, exist at various depths and may deviate, from the marked route.

To avoid damage it is recommended that mechanical excavators or borers are not used within 600mm of Openreach plant. Please ensure that our equipment is not enclosed, blocked, covered or otherwise obstructed by your plant. In the event of clearance not being adequate we anticipate that your plant is either resited, or an order is placed with Openreach for rearrangements of its plant. If there are any difficulties with the Map please email cbyd@openreach.co.uk

Please contact our Network Protection Service by Email on cbyd@openreach.co.uk giving four calendar weeks notice of your commencement date. This will provide you with on-site advice and a check of location for any Openreach apparatus.

Further to this, I hope the following points will assist you at the new development: -

Openreach has a licence obligation to provide service to any end customer requiring a connection. A Developer would not normally be charged for provision of service, our standard connection charges would apply to the end user when orders are placed with the communication provider of choice. However, should a Developer insist on an underground service in an area where Openreach plant is provided overhead, charges may be incurred.

When the Developer has obtained contract and planning permission Openreach would request a 'Clean', scaled Site Layout, Location Map and a covering letter be sent to the relevant newSite Office. We would particularly request that you give details of your programmed site start date and likely first occupancy date where possible. To obtain contact details of the newSite office covering the development area click on the URL below.

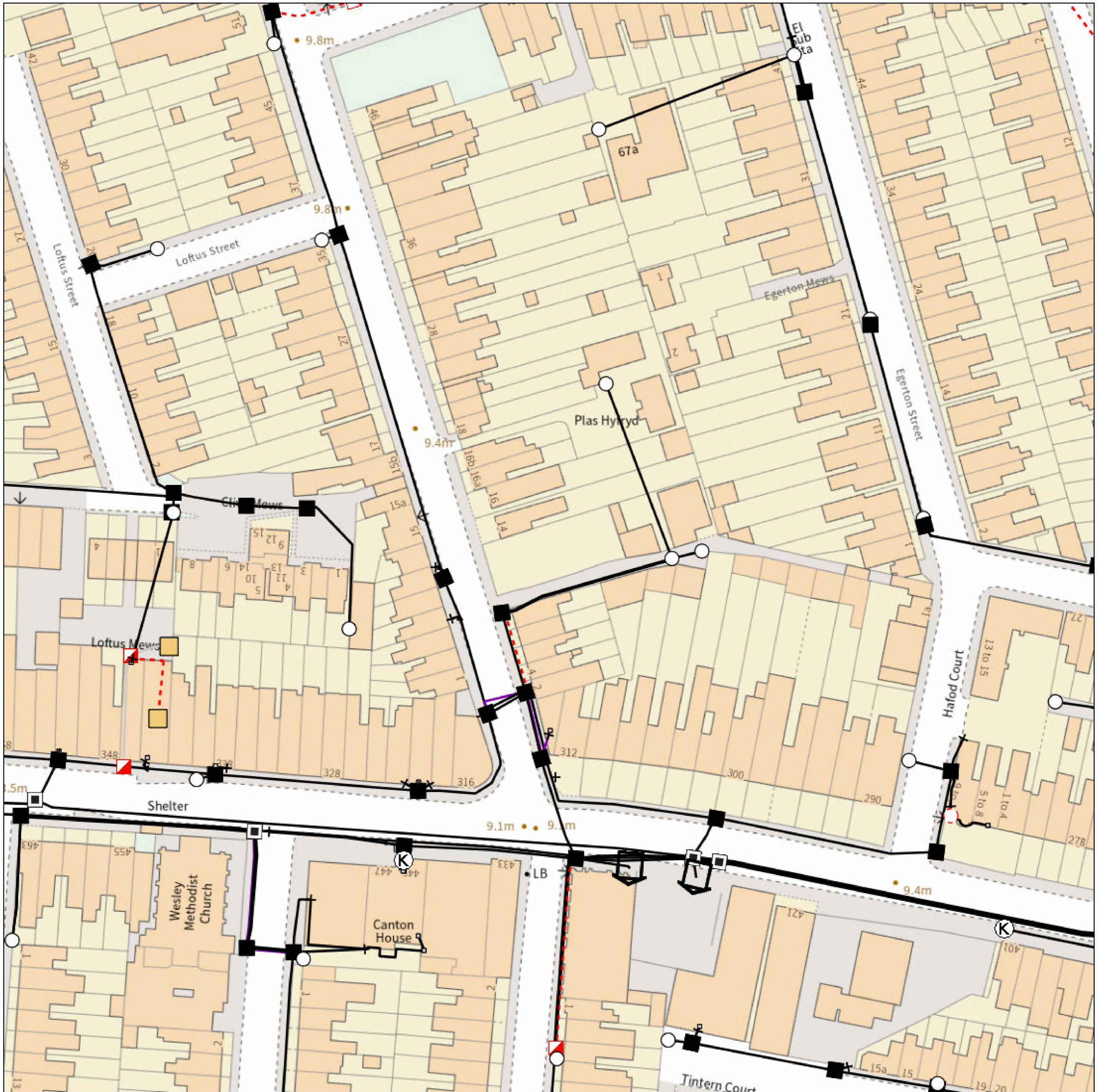
<http://www.newdevelopments-openreach.co.uk/ContactUs.aspx>

Where a development affects existing Openreach apparatus in the public highway, the cost of any necessary protection or diversionary works must be borne by the Developer. In this case where a budget estimate is required a Site Plan, Location Map and a covering letter should be forwarded to the Repayments Project Office. Please visit www.openreach.co.uk/alterationscontacts for contact details of the Repayments Office covering the development area.

Yours faithfully,

Openreach newSites

Maps by email Plant Information Reply



IMPORTANT WARNING

Information regarding the location of BT apparatus is given for your assistance and is intended for general guidance only. No guarantee is given of its accuracy. It should not be relied upon in the event of excavations or other works being made near to BT apparatus which may exist at various depths and may deviate from the marked route.



openreach

CLICK BEFORE YOU DIG

FOR PROFESSIONAL FREE ON SITE ASSISTANCE PRIOR TO COMMENCEMENT OF EXCAVATION WORKS INCLUDING LOCATE AND MARKING SERVICE

email cbyd@openreach.co.uk

ADVANCE NOTICE REQUIRED
(Office hours: Monday - Friday 08.00 to 17.00)
www.openreach.co.uk/cbyd

Accidents happen

If you do damage any Openreach equipment please let us know by calling 0800 023 2023 (opt 1 + opt 1) and we can get it fixed ASAP

KEY TO BT SYMBOLS

			Change Of State	+	Hatchings	
	<i>Planned</i>	<i>Live</i>	Split Coupling	×	Built	
PCP			Duct Tee	▲	Planned	
Pole			Building		Inferred	
Box			Kiosk	(K)	Duct	
Manhole			Other proposed plant is shown using dashed lines. BT Symbols not listed above may be disregarded. Existing BT Plant may not be recorded.			
Cabinet			Information valid at time of preparation. Maps are only valid for 90 days after the date of publication.			
	<i>Pending Add</i>	<i>In Place</i>	<i>Pending Remove</i>	<i>Not In Use</i>		
Power Cable						
Power Duct				N/A		

Reproduced from the Ordnance Survey map by BT by permission of Ordnance Survey on behalf of the Controller of Her Majesty's Stationary Office

(C) Crown Copyright British Telecommunications plc 100028040

BT Ref : DJB10555S

Map Reference : (centre) ST1600476716

Easting/Northing : (centre) 316004,176716

Issued : 31/10/2023 10:55:16

WARNING: IF PLANNED WORKS FALL INSIDE HATCHED AREA IT IS ESSENTIAL BEFORE PROCEEDING THAT YOU CONTACT THE NATIONAL NOTICE HANDLING CENTRE. PLEASE SEND E-MAIL TO: nnhc@openreach.co.uk

ELECTRIC

91 Market Street Hoylake Wirral CH47 5AA
Tel. 0151 632 5142
enquiries@cornerstoneprojects.co.uk
www.cornerstoneprojects.co.uk
VAT Reg. No. 851 4941 19
Company No. 5132353

Our Ref: 31369610 Your Ref: db-8711

Tuesday, 31 October 2023

Duncan Phillips
91 91 Market Street
Hoylake
MSY
CH47 5AA

**National Grid Electricity
Distribution**
Mapping Centre
Toll End Road
Tipton
West Midlands
United Kingdom
DY4 0HH
www.nationalgrid.co.uk

Dear Duncan Phillips

Thank you for your enquiry dated Tuesday, 31 October 2023

I now enclose a copy of our plan showing existing National Grid Electricity Distribution (NGED) Electricity / National Grid Telecoms (NGT) apparatus in the vicinity of your proposed works. This information is given as a general guide only and its accuracy cannot be guaranteed. Please note that all NGED equipment on site should be assumed to be LIVE until NGED prove otherwise and provide you with confirmation to this effect in writing. Recent additions to our network, or service connections between the main cable and a building or street lamp may not be shown.

Map Response
T 0121 623 9780
NGED.MapResponse
@nationalgrid.co.uk

Damage to underground cables and contact with overhead lines can cause severe injury or may prove fatal. If you are excavating on site in the vicinity of either NGED Electrical apparatus or NGT Telecoms apparatus you must comply with the requirements of the following:-

Health & Safety Executive guidance HS(G)47, Avoiding Danger from underground services.

Work taking place in the vicinity of our plant is also regulated under the:-

Electricity at Work Regulations 1989, Health and Safety Act 1974, CDM Regulations 2015.
Safe working procedures should be defined and practiced

Please ensure that the use of mechanical excavators in the vicinity of our plant is kept to a minimum. NGT Telecoms ducts contain fibre cables, which are expensive to repair. Therefore, extreme care must be taken whilst working in the vicinity of these ducts, hand digging methods being used to determine their precise position.

If there are overhead lines crossing your site and your proposal involves building works which may infringe the clearance to our overhead system then you should call the relevant general enquiries number (see page 2 of this letter) for advice. Where overhead lines cross your site you must comply with the requirements of Health & Safety Executive guidance as laid down in GS6, Avoidance of Danger from Overhead Electric Lines.

National Grid Electricity
Distribution
South West - 02366894
South Wales - 02366985
East Midlands - 02366923
West Midlands - 03600574

Where diversions to NGED apparatus are needed to allow change to occur on site, the cost of these alterations may be charged to the persons responsible for the works.

If you require advice in connection with your proposals please contact the relevant general enquiries number (see page 2 of this letter)

Registered in
England and Wales

Following consultation the local NGED team will where necessary prepare detailed proposals and provide a quotation for any necessary alterations and/or development of our equipment on the site.

Registered Office:
Avonbank
Feeder Road
Bristol
BS2 0TB

This information is given as a guide only and its accuracy cannot be guaranteed. This plan is based on data from our Geographic Information System, which is updated every 24 hours to reflect changes to our network. The information contained in this plan reflects the most recent network GIS data, however changes to the network (including network additions and new service

connections) may not be shown. You are advised to obtain an up to date plan on the date of commencing on-site works.

Yours sincerely
NGED Map Response Team

Contact Us

Emergency or Power Supply issues

In an emergency call 105, 24 hours a day.

Mapping Enquiries

If you have an enquiry relating to this letter or the attached map plan, please contact us using the following information:

Telephone 0121 623 9780
Email NGED.MapResponse@nationalgrid.co.uk

General Enquiries

If you have a general enquiry, please call us on the following telephone number:

All areas 0800 096 3080

LSBUD

If you have an enquiry relating to the use of the LSBUD website please contact LSBUD using the following information:

Telephone 0345 437 7365
Email enquiries@LSBUD.co.uk
Website www.LSBUD.co.uk

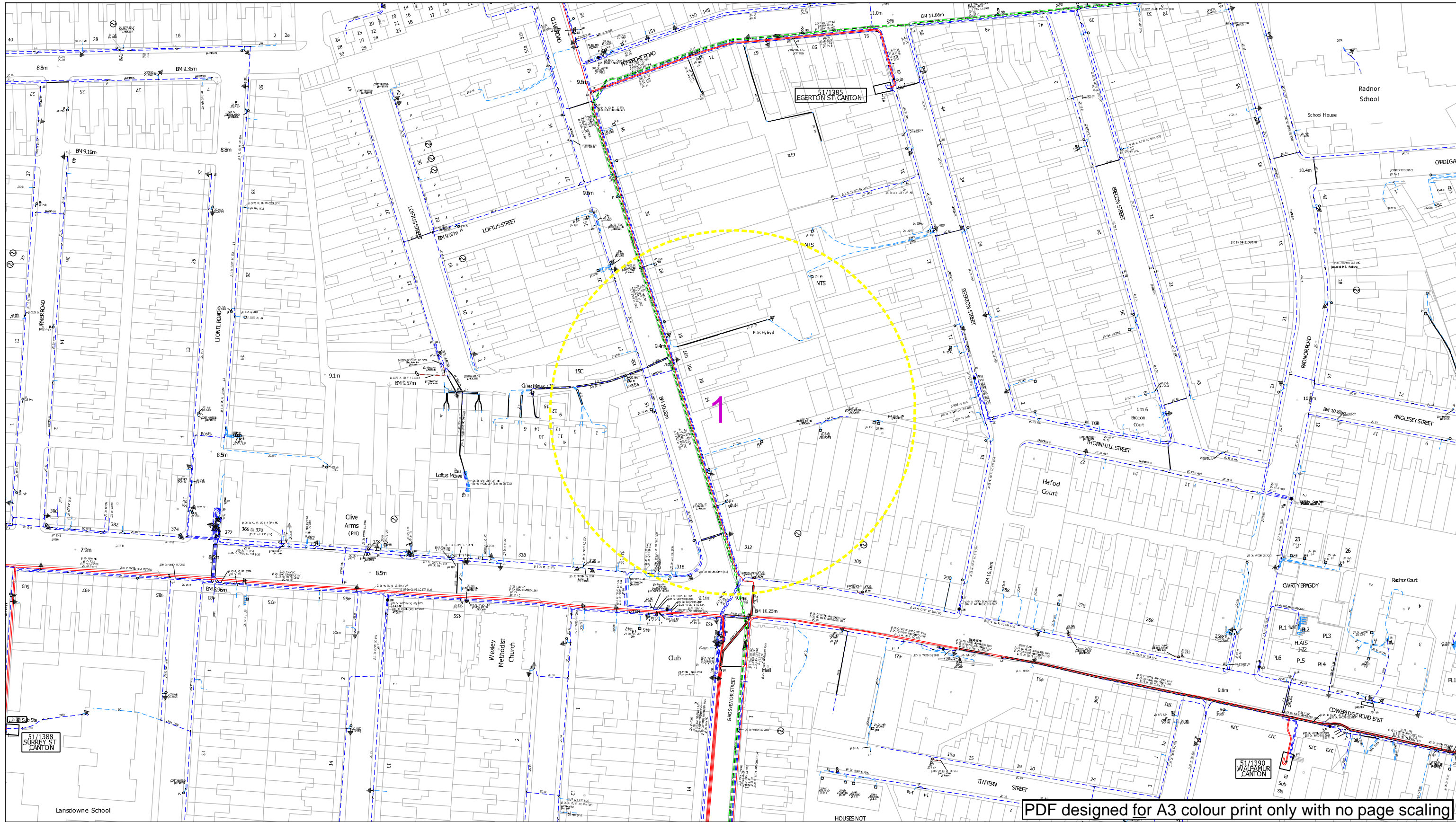
Steps to help keep you safe

- **If you are working within 10 metres of our 33kV, 66kV, 132kV underground electricity cables or within 10 meters of an overhead electricity line you should call the relevant General Enquiries for free safety advice.**

Safety Documents – please download our informative safety documents to help ensure that you, your staff and the public are kept safe whilst working in the vicinity of electricity.

<https://www.nationalgrid.co.uk/customers-and-community/health-safety/public-safety-advice>

- **Make sure you have up to date plans** - remember that recent additions to our network or service connections between the main cable and a building or street lamp may not be shown.
- **Look for signs of service cables** - an electricity meter box or nearby streetlamp may give you an indication that service cables are present in your area of work.
- **Non NGED Network** - electricity cables, lines and equipment owned by others may also be present in addition to NGED network. They are unlikely to be shown on our plans.
- **Use a cable locator** - trace electricity cables and mark the position of them using paint or other waterproof marking on the ground.
- **Hand dig trial holes** - to confirm the position of cables in close proximity to your area of your work and use spades and shovels rather than picks, pins or forks.
- **Have an emergency plan** - so that everyone working on site understands what to do in the event of an underground electricity cable being damaged or contact being made with an overhead electricity line.
- **If you are working within 10 meters** of an overhead electricity line then it may be necessary for you to erect warning signs and markers, or height restriction goal posts. Ensure that you comply with the requirements of Health & Safety Executive guidance laid down in GS6, Avoidance of Danger from Overhead Electric Lines.
- **If you are erecting a structure** that could allow anyone standing on it, or its access device (ladder, scaffold, MEWP), to come within 3m of any overhead electric line then **you must inform us**. This is your duty and a legal requirement under the Electricity Safety, Quality & Continuity Regulations 2002.
- **If you cannot work safely** around the underground electricity cable or overhead electricity line, then you may need to get it moved to allow your works to go ahead. Call the general enquiry numbers above for guidance.
- **It is possible that cables or pipes may be embedded in concrete** - electricity cables embedded in concrete **MUST** be made 'dead' by Western Power Distribution or the cable owner before the concrete is broken out. Alternatively, another safe way of working should be agreed.
- **Cables are sometimes covered by tiles or a marker tape** - these can be concrete, polythene or earthenware and are a useful early warning of the presence of cables; you should avoid disturbing any tiles or tape to expose the cable. Not all cables have these warning indicators.



PDF designed for A3 colour print only with no page scaling

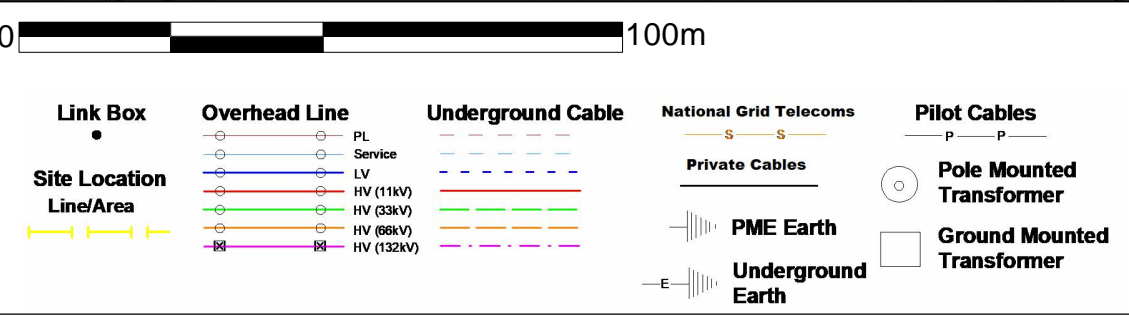
Contact Us
 Mapping Enquiries: 0121 623 9780
 General Enquiries: 0800 096 3080

Date Requested: 31/10/2023
 Job Reference: 31369610
 Site Location: 316004 176714
 Requested by:
 Mr Duncan Phillips
 Your Scheme/Reference: db-8711

Scale: 1:1250 (When plotted at A3)

IMPORTANT NOTICES

This information is given as a guide only and its accuracy cannot be guaranteed. Services or recent additions to the network may not be shown. Cables, overhead lines & substations owned by other electricity network owners or private companies may be present and may not be shown. You should always verify exact locations of cables using a cable locator and by careful use of hand tools in accordance with HSE guidance note HSG47. When working within 10m of any overhead electric line you should follow the requirements of HSE Guidance Note GS6. For further advice on working near our electricity cables or lines, call our Contact Centre on 0800 096 3080. Advice should be sought from the National Grid Electricity Distribution Contact Centre for any work that is to take place in proximity to 66kV or 132kV underground cables and 66kV 132kV overhead lines – 0800 096 3080



Report damage immediately KEEP EVERYONE AWAY FROM THE AREA
0800 6783 105

nationalgrid **Electricity Distribution**

Email: NGED.MapResponse@NationalGrid.co.uk

nationalgrid

Look out, look up!

National Grid Electricity Distribution's
guide to the safe use of mechanical
plant in the vicinity of electricity
overhead lines



CALL 105

nationalgrid.co.uk

The safe use of mechanical plant in the vicinity of electricity overhead lines

Every year in the UK on average, two people are killed and many more are injured when mechanical plant and machinery comes into contact or close proximity to overhead electricity lines.

This booklet has been produced for anyone who uses mobile plant, (such as Hiabs, MEWPs, tipper lorries and trailers, grab lorries, concrete conveyors and excavators) for short duration work and provides general guidance on how to avoid becoming part of these statistics.

1 Before starting work

Overhead lines have the advantage that they can easily be seen, so before you set up your vehicle or plant always:

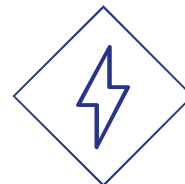
Stop and look up!



If you are working at night, or in conditions of poor visibility, you should use spotlights or a torch to carefully check that there are no overhead lines within your vehicle's reach.



If you are in any doubt about whether the lines in question are power or telephone (this is a very common mistake) –always assume that they are power lines and are live.



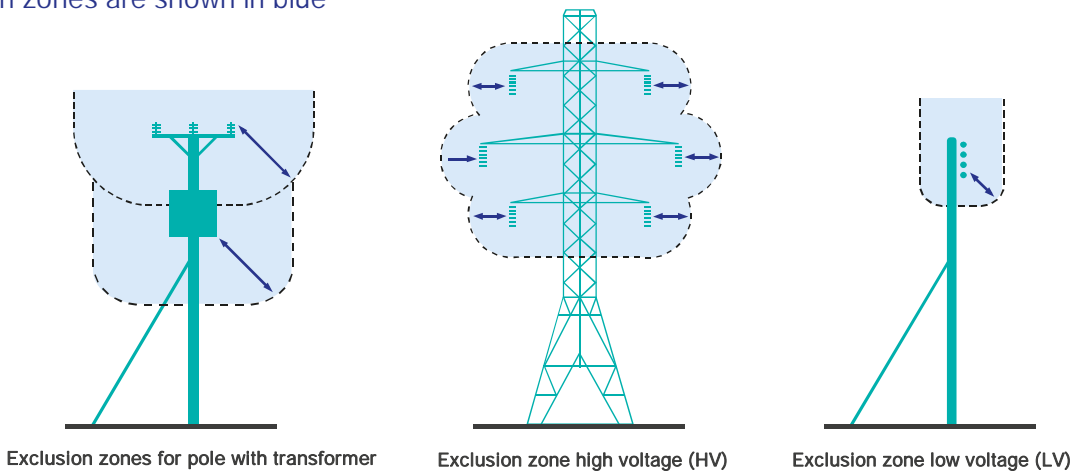
It is not normally practical for electricity companies to shroud high voltage conductors and even when low voltage conductors are shrouded, the shrouding is not designed to protect against contact by mechanical plant –again, always assume the lines are live.

2 Exclusion zones

Overhead power lines are not normally insulated and so any contact can result in serious or fatal injuries. Electricity at high voltages can also jump gaps with no warning whatsoever, so it is also dangerous to let your plant approach too close to a line. The distance that electricity can jump depends on the voltage of the line.

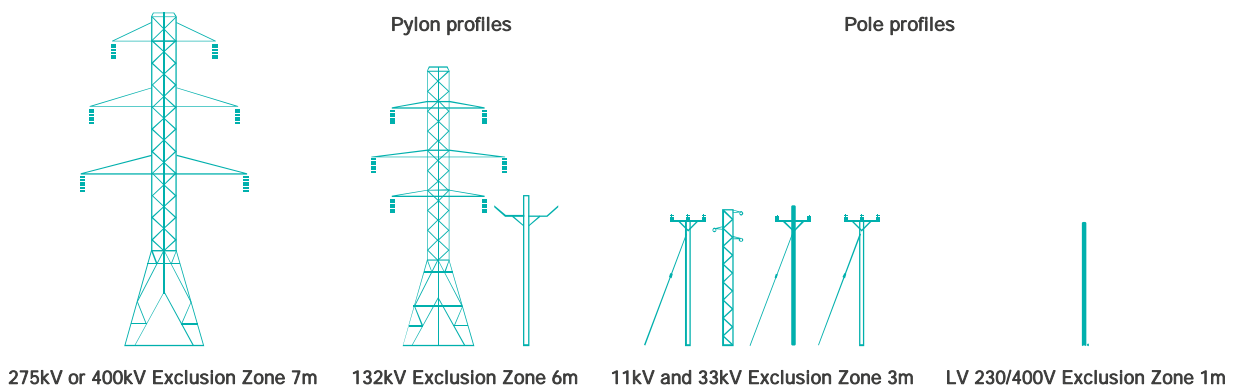
The higher the voltage, the further you must stay away from the line and any other equipment that may be fitted to the pole or pylon. This distance is called the **exclusion zone**. Examples of this are shown highlighted in the diagram below.

Exclusion zones are shown in blue



You must not allow any part of your plant to enter the **exclusion zone**. The diagram below shows typical types of overhead lines and provides a guide to help

you assess the line voltage of lines on wooden poles or steel pylons. The minimum **exclusion zone distance** is shown for each example.



Please note that these are absolute minimum distances that should under no circumstances be infringed. If you do –it could prove fatal. As well as staying away from the lines or equipment, you should also stay at least

600mm away from any part of poles, pylons and stay wires. Please remember that is for guidance only, and if you are in any doubt, please call us for advice before setting up your plant or starting work.

3 Stand off distances

If there are power lines in the vicinity of your work the best way to make sure you stay out of the **exclusion zone** is to position your vehicle at a **safe stand off distance** so that, even when fully extended, no part of it can accidentally reach inside the **exclusion zone**.

This **safe stand off distance** can be calculated by adding the **exclusion zone** distance for the appropriate voltage of the line to the **maximum operating reach** of your vehicle.

This is shown in the diagram opposite.

If you position your vehicle outside of the **safe stand off distance**, there is no risk of accidental contact with the lines and no danger of electricity jumping from the line to your vehicle.

If you cannot achieve a **safe stand off distance**, consider moving your vehicle to a safer location.

It may make your job a bit more difficult, but if it means you stay away from the **exclusion zone** - it will be safer.

The next best option would be to consider using smaller plant with a **maximum operating reach** that cannot enter the **exclusion zone**.

You may not be able to achieve either of these options, so, as a last resort, if you cannot avoid operating large items of plant in the vicinity of lines, you must make sure that the plant is fitted with restraints to ensure that the **exclusion zone** cannot be entered.

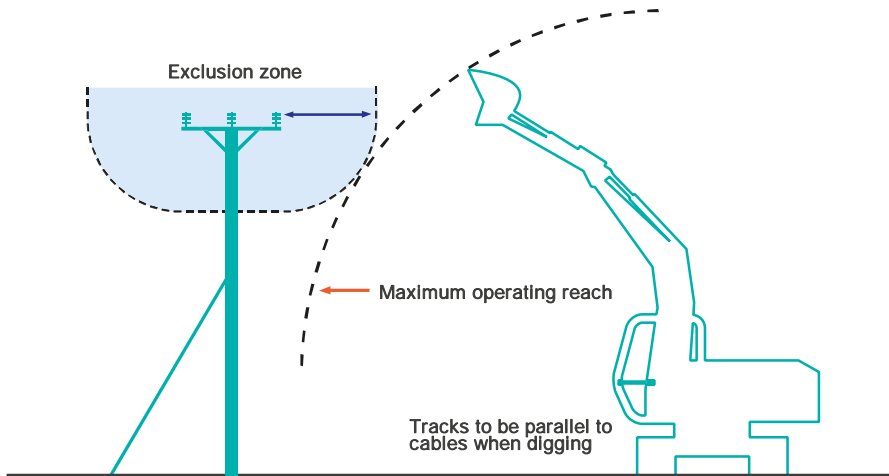
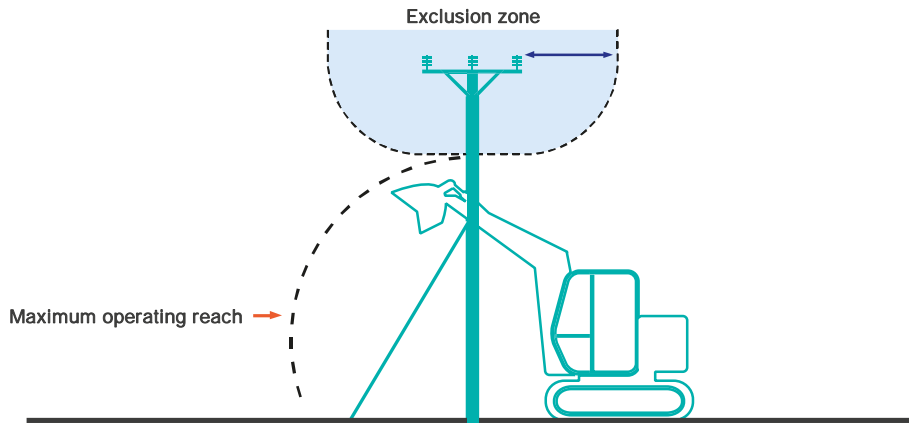
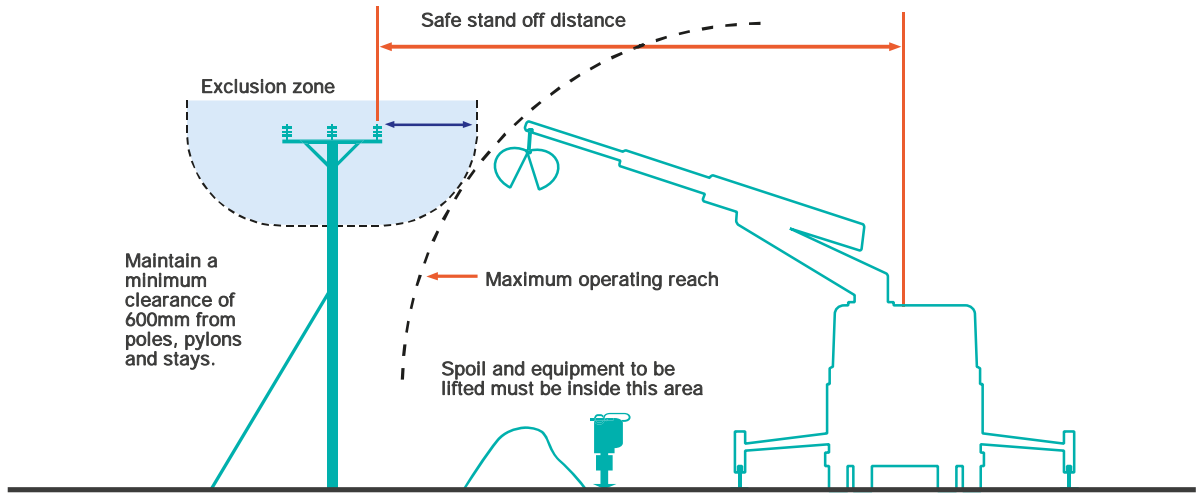
These restraints may be electrical or hydraulic systems fitted to the plant, or mechanical devices such as chains.

Please seek advice from the plant manufacturer for more information on choices available for your particular item of plant. If you are using a mechanical excavator to dig parallel to the line, it is good practice to position the excavator with the tracks or wheels parallel to the line, so as you move along the excavation the safe stand off distance is easily maintained.

Care must also be taken to avoid non mechanical equipment, (e.g. scaffold poles, ladders and long loads such as lengths of steel or timber) from entering the exclusion zone.

Always maintain at least 600mm clearance from your plant to any of our poles, stay wires or pylons. Any contact with these by your plant could cause the line to break and fall to the ground.





4 Emergency procedures

If contact is made with an overhead line, you must immediately clear the area and suspend all work within 50m of the damage because the line could still be live, or become live again.

The operator of a machine that is in contact with an overhead line should take the following steps:

If the machine is still operable:

- lower any raised parts that are controlled from the driving position and/or drive the vehicle clear of the line, as long as neither of these actions risk breaking the line or dragging it to the ground.

If the machine is not operable or cannot be driven clear of the line:

- stay in the cab
- contact your site manager or us immediately by radio or mobile phone or as soon as possible by any other method
- instruct everyone outside the vehicle not to approach it
- do not exit the cab until given confirmation by National Grid Electricity Distribution personnel that it is safe to do so.

If the machine is inoperable or cannot be driven free and there is risk of fire or other immediate hazard:

- jump clear of the vehicle, avoiding simultaneous contact with any part of the machine and the ground
- try to land with your feet as close together as possible
- where possible, continue to move away from the vehicle using “bunny hops” with your feet together until at least 15m from the vehicle
- instruct other people in the vicinity not to approach the vehicle
- do not return to the vehicle until given confirmation by National Grid Electricity Distribution personnel that it is safe to do so.

Whatever the circumstances please contact us on our emergency number immediately and tell us what has happened.

Please be ready to provide us with a contact telephone number and an accurate location or set of directions – this will help us in getting our staff to site quickly to minimise any danger and to reduce any disruption to your work.

**Our emergency number is:
105 or 0800 6783 105**

Please report any damage or contact no matter how minor they may seem to you at the time.

Whilst the damage may not cause a serious problem at the time of contact it could fail later, causing danger to our staff and members of the public, disruption to our customer’s supplies, and – if we trace the damage back to you – a larger repair bill!

CALL 105



5 More information

Proximity Warning Systems (such as Wire Watcher –see wirewatcher.co.uk for information) may be fitted to your vehicle. Never turn these devices off or disable them in any way.

Take note of any warnings these proximity warning systems may provide but do not use the presence of such devices as a reason not to follow the advice provided in this leaflet.

For your information, we are legally obliged to report all contact with our system to the Department of Trade and Industry (DTI), and, if you are an employer, you may be obliged to report incidents involving your staff or contractors to the Health & Safety Executive (HSE). Even if no one is hurt, you could still find yourself being prosecuted for causing a dangerous occurrence.

6 Further reading

For advice related to signing and guarding at longer term work sites please also refer to National Grid Electricity Distribution booklet "Avoidance of Danger from Electricity Overhead Lines and Underground Cables". More detailed information is also published in the following documents available from the HSE.

GS6 –Avoidance of Danger from Overhead Lines.

HS(G) 47 –Avoiding Danger from Underground Services.

Along with Forestry Industry Safety Accord (FISA) publication **FISA 804 - Electricity at Work: Forestry.**



If you require more site-specific information relating to our equipment at your location please contact us on the relevant **general enquiries number:**

0800 096 3080

Finally... please, always remember that electricity overhead lines can be very dangerous – **the general rule is stay away and stay safe!**

A photograph of a worker in a yellow safety suit and white helmet working on a large array of red cables in a tunnel. The worker is on the right side of the frame, looking towards the camera. The cables are arranged in a long, parallel line, extending from the foreground into the background. The background is dark and appears to be the interior of a tunnel or a large underground structure. The overall scene is dimly lit, with the worker's safety gear providing a bright contrast.

nationalgrid

Avoidance of danger from electricity overhead lines and underground cables

National Grid Electricity
Distribution's information
to manage safety whilst
working in the vicinity
of our equipment.

CALL 105



nationalgrid.co.uk

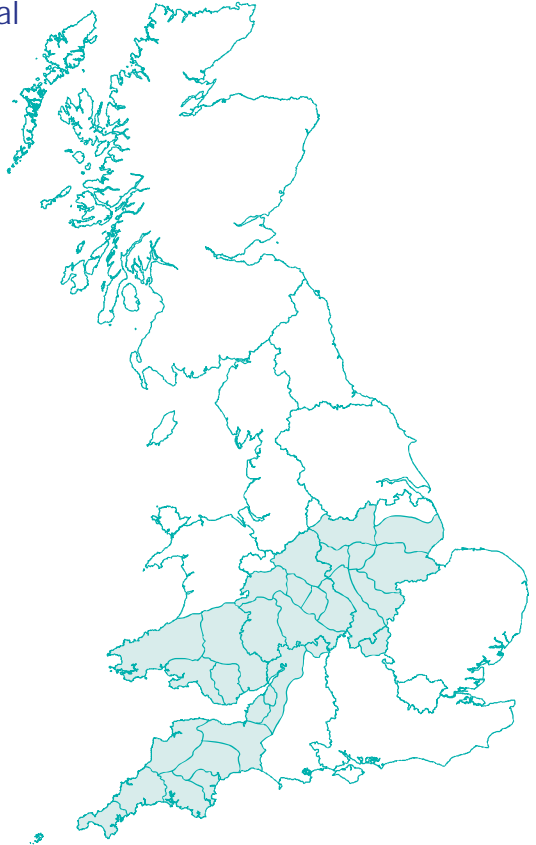
Avoidance of danger from electricity overhead lines and underground cables

Every year in the UK on average, two people are killed and many more are injured when mechanical plant and machinery comes into contact or close proximity to overhead electricity lines.

Although electric shock is the first thing that people associate with coming into contact with our network, those who have witnessed the effects of damage to our system are shocked by the amount of heat, light and noise that are the result of an electrical flashover.

In the Midlands, South West and South Wales, National Grid Electricity Distribution (NGED) have had to attend to incidents where people have accidentally made contact with one of our live electricity overhead lines or damaged an underground cable and became seriously injured.

A significant number of these accidents occurred whilst people were working in the vicinity of overhead and underground electrical apparatus and this booklet has been produced to provide general guidance on how you and your employees can avoid becoming one of these statistics.



Planning your work

It makes sense to consider your safety while in the vicinity of our equipment as early in your planning process as possible.

One of the first things you should do whenever you are planning your work is to check whether there is any of our equipment in the immediate vicinity. You should do this whether your work is taking place on public (e.g. highways and footpaths) or on private land.

Companies and organisations can request plans through LSBUD (Linesearch BeforeUdig) lsbud.co.uk –this site provides the same high quality plans and service that the NGED Webmap system has provided in the past, with the significant added benefit of searching over 40 other asset owners from a single query, including underground and overhead electricity networks, gas, high pressure fuel, water and fibre optic networks.

(Please note: not all asset owners are represented by LSBUD, and enquiries should also be made independently to all other relevant organisations).

This service allows you to request plans online and receive an information pack back via email within minutes.

Domestic/private customers should request plans using the phone number, email or postal address shown at the bottom of this section.

For instance, take a good look around your site to see if there are any visible overhead lines.

You should also bear in mind that we have a very extensive network of underground cables, and we are always happy to supply a plan from our Map Response Team who can be contacted via the following;

Tel:
0121 623 9780

Email:
nged.mapresponse@nationalgrid.co.uk

It is always safer to assume that there are underground cables present in the ground until you have proven otherwise.

An online mapping service is available at: nationalgrid.co.uk/our-network/check-before-you-dig-location-of-our-cables-and-equipment

Working in the vicinity of underground cables

Having obtained copies of our network maps, it is important to recognise that in most cases there will be no surface indication of the presence of underground cables.

We therefore advise that you take the following actions:

- make sure that you have up-to-date copies of our cable record plans on site - not back in the office
- don't assume that these plans are to scale if they have been faxed or copied
- make sure that a competent person using a Cable Avoidance Tool (CAT) locates all of the cables shown on these plans
- mark the locations of cables on the ground surface with waterproof road paint or other permanent marker
- always assume that our cables are live unless we have informed you, in writing, otherwise
- by hand, dig trial holes to locate the exact position of all cables. Always use an insulated spade or shovel –never use a pick, fork or power tool –push the spade or shovel into the ground applying foot pressure
- look out for ducts, marker tape or tiles but do not rely on these. Even if a cable route was originally laid in a duct or with a marker tape, these may have been removed during other excavations at a later date along with all or part of the cable route
- brief all people working in the vicinity of the presence and location of all underground cables.



Under no circumstances should you attempt to work on, or interfere with, any of our underground cables

The only people qualified to work on this equipment are our operatives; who have been specifically trained and are authorised in writing to do so.

Please also be aware that:

- cable record plans are not guaranteed to be completely accurate. Kerb lines, roads and buildings may have been moved or altered since the cables were laid
- cables should ordinarily be at least 450mm deep, but don't assume this to be the case where you are working –ground levels could have changed
- not all service cables are shown on record plans, so look for cables running down poles and bear in mind that all buildings, street lights and street furniture are likely to have cables running to them. Cables feeding street furniture may be relatively shallow near to the furniture
- cables do not run in straight lines. They often “snake” through the ground avoiding surface and buried obstacles that may not be visible to you
- cables are flexible and can change direction and depth abruptly –for this reason never use mechanical excavators within 0.5m of any underground electricity cable even if you have located it with trial holes
- **no attempt should be made to break out concrete surrounding a cable. Please contact us immediately on our general enquiries number and we will discuss the options for safe working which may include making the cable dead or you moving your work site if possible. If we need to make the cable dead we may need to provide our customers with two weeks notice of the power interruption**
- our cables and joints are not designed to act as steps or to be left unsupported. If you remove support from any cable, you will need to support it using temporary hangers at not more than 0.5m intervals.
- when backfilling, please consolidate the ground under the cables, cover the cable with soil free of stones or with stone dust and replace any cable marker tiles, ducts and tape.



If you damage an underground cable

You must immediately clear the area of personnel because the cable could still be live, or become live again.

If a machine is still in contact with the cable, instruct the driver to jump clear of the vehicle, avoiding simultaneous contact with any part of the machine and the ground. Try to land with your feet as close together as possible.

Where possible, continue to move away from the vehicle using “bunny hops” with your feet together until at least 15m from the vehicle.

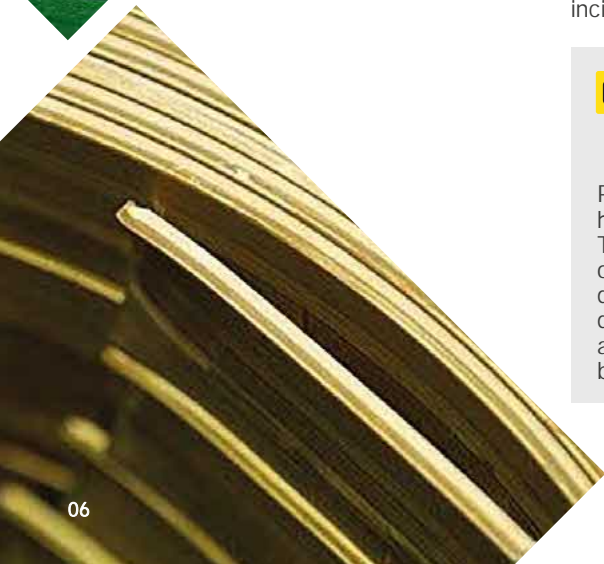
Please contact us on our emergency number immediately and tell us what has happened. Please be ready to provide us with a contact telephone number and an accurate location or set of directions –this will help us in getting our staff to site quickly to minimise any danger and lessen the disruption to your work.

Incident locations can be hard to describe. Using the free What3Words app will enable us to quickly and easily identify where the incident has taken place across our network.

CALL 105



Please report any damage to a cable, however superficial it might seem. The cable may not fail at the time of damage, but it could fail later, causing danger to our staff and other contractors, disruption to our customers’ supplies, and also –if we trace the damage back to you –a large repair bill.



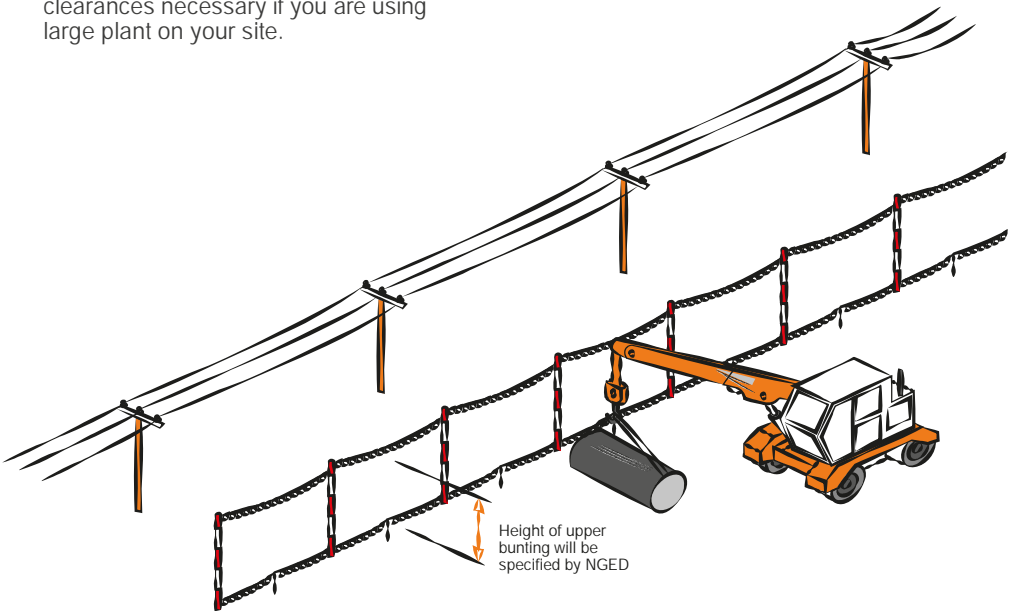
Working in the vicinity of overhead lines

Under no circumstances should you attempt to work on, or interfere with any of our overhead line equipment or service wires.

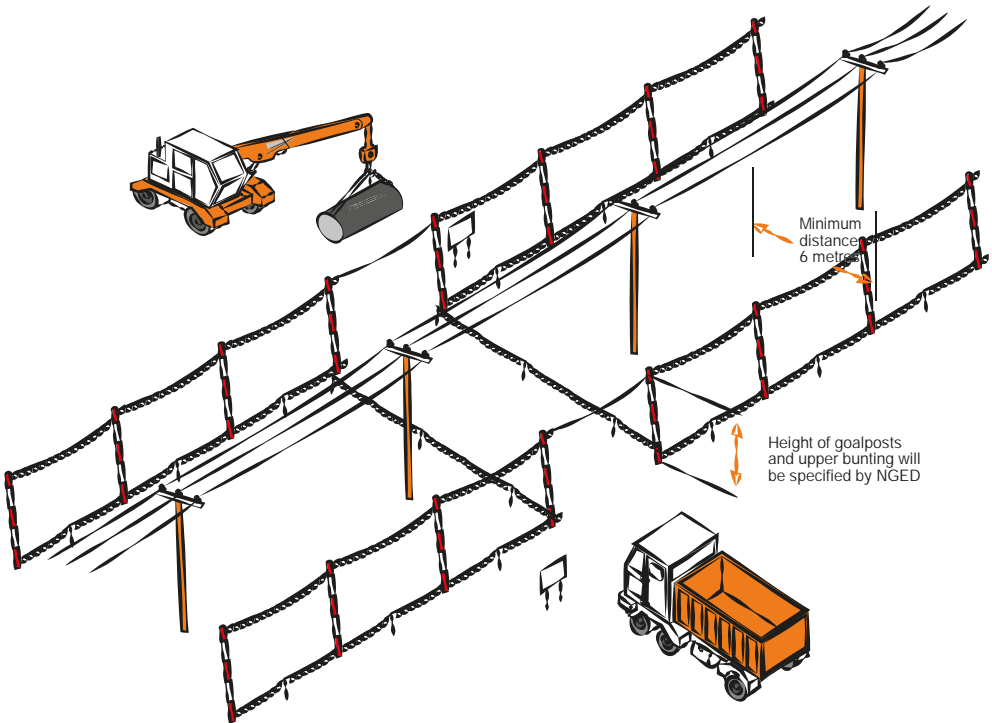
The only people qualified to work on this equipment are our operatives; who have been specifically trained and are authorised in writing to do so. Overhead lines have the advantage that, unlike underground cables, they can easily be seen.

- Always assume that our overhead lines are live unless we have informed you otherwise in writing.
- We will be able to advise you about the type and voltage of the overhead lines in question and provide you with information about the clearances that you must adhere to during your work. Please ring our regional general enquiries number for further advice.
- In some circumstances, we may be able to temporarily shroud low voltage overhead lines and services running to buildings if you need to work in the vicinity e.g. for scaffolding erection, fascia repairs and painting work on domestic properties. We don't normally charge for the shrouding of overhead lines, but please give us as much notice as possible.
- If you think that you will be working close to our overhead lines and they need shrouding –please don't start work until we have agreed what needs to be done and all safety precautions are in place.
- If you are in any doubt about whether the overhead lines in question are power or telephone (this is a very common mistake) –please ask us.
- Please note that it is not technically possible to shroud high voltage lines, so if you cannot avoid working near to our high voltage lines, contact us and we will be happy to meet with you to discuss safe alternatives.

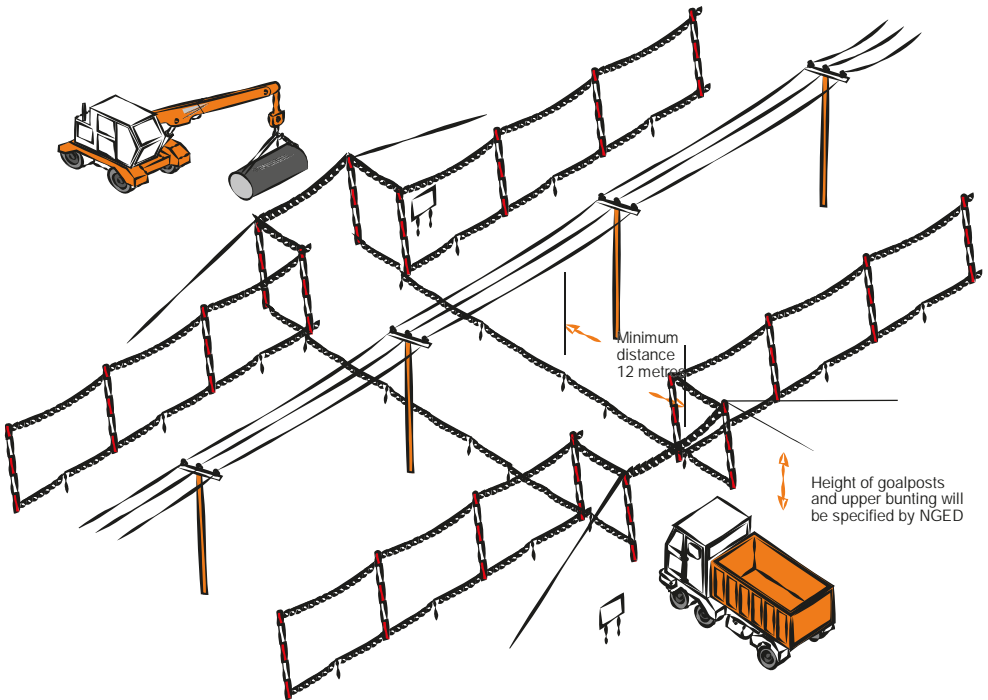
- If it is decided that work can go ahead in the vicinity of our overhead lines but there is a risk of you infringing the safety clearances from the overhead lines, you have a responsibility to erect safety barriers to segregate your works from the area around the overhead lines. The detailed requirements for these barriers are provided in the HSE document GS6 'Avoidance of Danger from Overhead Lines'. As a summary they should consist of:
 - red and white coloured posts erected at 6m intervals, with coloured bunting stretched between their tops, supplemented by low level bunting erected at 1m above ground level, supported at 3m intervals on red and white coloured posts. This is shown below.
- We are able to advise you on the height of the barriers and any additional clearances necessary if you are using large plant on your site.
- Any bunting, ropes and lanyards used should be made from an insulating material.
- These barriers should be erected parallel to the overhead line at a minimum distance of 6m horizontally from the outermost conductor of the overhead line.
- The supports may be supported by rubble or concrete filled barrels or buried directly in the ground.
- Danger notices should be fixed to all of your high level supports.
- The ground enclosed within these barriers is best regarded as "dead ground" in which all foot and vehicular traffic is forbidden, in all circumstances, for the duration of your work.



- Where it is necessary for foot and vehicular traffic to pass under the line, you will need to form a marked access way between the barriers as shown below.
- This access way should comprise of bunting erected 1m above ground, supplemented by high level “goal-posts” erected at either end.
- The goal post cross bars should be rigid, made of insulating material and positioned in a location and at a height specified by us.
- The access route should be as narrow as possible and should not normally exceed 10m in width.
- If it is necessary to make the access route wider than this, you may find it impractical to use rigid cross bars, so you may use a tensioned rope and bunting instead. If you use rope and bunting as a cross bar, you should move the entrance to the access route out to a minimum distance of 12m from the outermost conductor of the line. This is to allow for any stretching of the rope if pulled by your plant.



- If you decide to use steel wire rope to support the barrier, this must be effectively connected to earth at both ends.
- You should also install Danger Notices at all probable directions of approach and clearly display the cross bar height.
- Whatever measures you take, you should ensure that everyone working in the vicinity of overhead lines is briefed about the risks and what safety measures are in place. Do not permit anyone to carry long objects, especially scaffold poles, ladders and irrigation pipes in the vicinity of overhead lines.
- If you are working at night, or in conditions of poor visibility, you should ensure the area is well lit and that the overhead lines are clearly visible.
- You should ensure that all shrouding, barriers and signs are regularly inspected and maintained so that they remain effective.
- Overhead lines are not normally insulated and electricity at high voltages may jump, so a dangerous situation can arise just from a close approach.
- Cranes and excavators working near overhead lines are at increased risk because of the possibility of the jib/arm slewing or being raised into the overhead line, or the load swinging into the overhead line. You may therefore also need to fit plant and vehicles with restricting chains etc. to physically restrain their operation –we can advise on this if you wish.
- If you are planning to carry out tree cutting or arboriculture work in the vicinity of our overhead lines, you need to be aware that this is a complex, high risk activity and we recommend that you employ a competent tree surgeon, who complies with all of the requirements of Forestry industry Safety Accord (FISA) publication FISA 804 - Electricity at work: Forestry.



If contact is made with an overhead line

You must immediately clear the area and suspend all work within 50m of the damage because the line could still be live, or become live again. The operator of a machine that is in contact with an overhead line should:

- **If the machine is still operable and the operator is still in the cab:**
 - provided that you do not risk breaking the overhead line or dragging it to the ground, immediately lower the raised parts of the machine using only the controls in the cab and/or drive the vehicle clear of the overhead line
 - contact us immediately on our emergency number so that we can check the overhead lines
 - instruct other people in the vicinity not to approach the vehicle.
- **If the machine is not operable, cannot be driven clear of the overhead line or there is a risk that doing so will break the line or drag it to the ground:**
 - stay in the cab
 - contact your site manager or us immediately on our emergency number by radio or mobile phone or as soon as possible by any other method
 - instruct everyone outside the vehicle not to approach it
 - do not exit the cab until given confirmation by wpd personnel that it is safe to do so.
- **If the machine is inoperable or cannot be driven free and there is risk of fire or other immediate hazard:**
 - jump clear of the vehicle, avoiding simultaneous contact with any part of the machine and the ground
 - try to land with your feet as close together as possible
 - where possible, continue to move away from the vehicle jumping with both feet together until at least 15m from the vehicle. Instruct other people in the vicinity not to approach the vehicle. Contact us immediately on our emergency number
 - do not return to the vehicle until given confirmation by wpd personnel that it is safe to do so.

Whatever the circumstances please contact us on our emergency number immediately and tell us what has happened. Please be ready to provide us with a contact telephone number and an accurate location or set of directions –this will help us in getting our staff to site quickly to minimise any danger and lessen any disruption to your work.

CALL 105



Please report any damage or contact no matter how minor they may seem to you at the time. The damage may not cause a serious problem at the time of damage, but it could fail later, causing danger to our staff and members of the public, disruption to our customers' supplies, and –if we trace the damage back to you –a large repair bill.

More information

For your information, we are legally obliged to report all contact with our system to the Health and Safety Executive (HSE), and, if you are an employer, you may be obliged to report incidents involving your staff or contractors to the HSE.

Even if no one is hurt, you could be prosecuted for failing to report such an incident.

More detailed general information on this subject is available in the following publications from the HSE:

- HSG(47) –Avoiding Danger from Underground Services
- GS6 –Avoidance of Danger from Overhead Lines
- along with Forestry Industry Safety Accord (FISA) publication FISA 804 –Electricity at Work: Forestry

If you require more site-specific information relating to our equipment at your location please contact us on our general enquiry number:

Our general enquiry number is:

0800 096 3080

National Grid Electricity Distribution plc
Avonbank
Feeder Road
Bristol BS2 0TB
United Kingdom

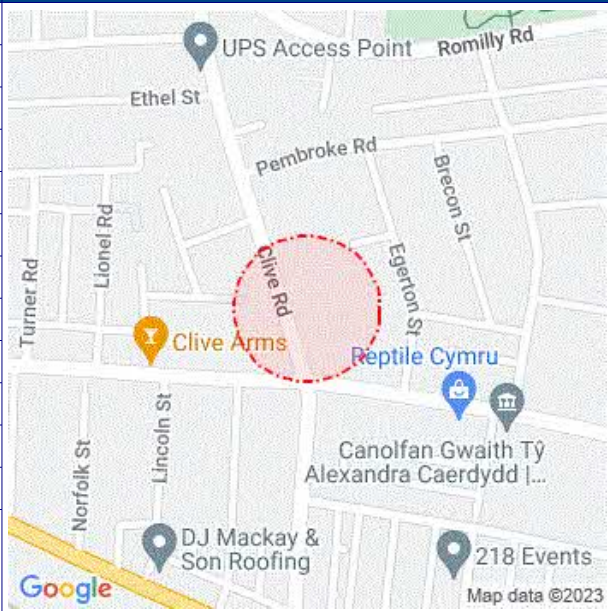
nationalgrid.co.uk

Finally

Please, always remember that electricity cables and overhead lines can be very dangerous –the general rule is **stay away and stay safe.**

THIRD PARTY SEARCHES

Enquirer			
Name	Mr Duncan Phillips	Phone	01516325142
Company	Cornerstone Projects	Mobile	Not Supplied
Address	91 91 Market Street Hoylake MSY CH47 5AA		
Email	searches@cornerstoneprojects.co.uk		

Enquiry Details		Site Map
Enquiry type	Initial Enquiry	
Work category	Development Projects	
Work type	Commercial/industrial	
Work type buffer*	75 metres	
Start date	01/11/2023	
End date	01/11/2023	
Scheme/Reference	db-8711	
Search location	XY= 316004, 176716	
Confirmed location	316004 176714	
Site size	125 metres diameter	
Site Contact Name	Not Supplied	
Site Phone No.	Not Supplied	
Description of Works		
<p>* The WORK TYPE BUFFER is a distance added to your search area based on the Work type you have chosen.</p>		

Affected LSBUD members
(LSBUD Members who have assets registered on LSBUD within the vicinity of your search area.)

Asset Owner	Phone/Email	Emergency Only	Status
National Grid Electricity Distribution	08000963080	08006783105	Await response
Wales and West Utilities	02920278912	0800111999	Await response

Status explanation

Await Response means that the asset owner will contact you. This is typically by sending the plan response but they may ask for further information before being able to do so, particularly if any payments or authorisations are required.

Email Additional Info means that the asset owner needs further information about your works to assess your enquiry before providing a response. Please provide any details you have available including plans, method statements etc. if available.

Important notices

It is very important that you correctly understand what the service does and the procedures in order for you to work safely. Please refer to the LSBUD Support Page (www.lsbud.co.uk/lineasearchbeforeudig-support) for further guidance.

This information includes how to provide additional information to the LSBUD Members who request it to provide a response to your enquiry.

Validity and search criteria. The results of this enquiry are based on the confirmed information you entered and are valid only as at the date and time of the enquiry. It is your responsibility to ensure that the Enquiry Details are correct, and LineasearchbeforeUdig (LSBUD) accepts no responsibility for any errors or omissions in the Enquiry Details or any consequences thereof. LSBUD Members update their asset information on a regular basis so you are advised to consider this when undertaking any works. It is your responsibility to choose the period of time after which you need to resubmit any enquiry but the maximum time (after which your enquiry will no longer be dealt with by the LSBUD Helpdesk and LSBUD Members) is 28 days. If any details of the enquiry change, particularly including, but not limited to, the location of the work, then a further enquiry must be made.

Terms and Conditions. Please note that this enquiry is subject always to our standard terms and conditions available at www.lsbud.co.uk ("Terms of Use") and the disclaimer at the end of this document. Please note that in the event of any conflict or ambiguity between the terms of this Enquiry Confirmation and the Terms of Use, the Terms of Use shall take precedence.

**List of not affected LSBUD members
(LSBUD Members who do not have assets registered on the LSBUD service within the vicinity of your search area.)**

Angus Energy	AWE Pipeline	B & D Energy Limited
Balfour Beatty Investments Limited	BOC Limited (A Member of the Linde Group)	Box Broadband
BP Exploration Operating Company Limited	BPA	Cadent Gas
Cambridgeshire County Council Climate Change and Energy Services	CATS Pipeline c/o Wood Group PSN	Cemex
Centrica Storage Ltd	CNG Services Ltd	Concept Solutions People Ltd
ConocoPhillips (UK) Teesside Operator Ltd	D.S.Smith	Diamond Transmission Corporation
DIO (MOD Abandoned Pipelines)	DIO (MOD Live Pipelines)	E.ON UK CHP Limited
EDF Energy Renewables Ltd	EirGrid	Eleclink Limited
Electricity North West Limited	Energy Assets Networks	ENI & Himor c/o Penspen Ltd
EnQuest NNS Limited	EP Langage Limited	ESB CCGT Power station (Carrington Gas Pipeline)
ESP Utilities Group	ESSAR	Esso Petroleum Company Limited
euNetworks Fiber UK Ltd	EXA Infrastructure	Exolum Pipeline System
Fulcrum Electricity Assets Limited	Fulcrum Pipelines Limited	Gamma
Gas Networks Ireland (UK)	Gateshead Energy Company	Gigaclear Ltd
Harbour Energy	Heathrow Airport LTD	Humbly Grove Energy
IGas Energy	INEOS FPS Pipelines	INEOS Manufacturing (Scotland and TSEP)
INOVYN ChlorVinyls Limited	INOVYN Enterprises Limited	Intergen (Coryton Energy or Spalding Energy)
Jurassic Fibre Ltd	Kensa Utilities	Last Mile
Mainline Pipelines Limited	Manchester Jetline Limited	Manx Cable Company
Marchwood Power Ltd (Gas Pipeline)	Melbourn Solar Limited	Moray East Offshore Windfarm
MUA Group Limited	National Gas Transmission	National Grid Electricity Transmission
Neos Networks	Northern Gas Networks Limited	Northumbrian Water Group
NPower CHP Pipelines	NTT Global Data Centers EMEA UK Ltd	NYnet Ltd
Ogi	Oikos Storage Limited	Ørsted
Palm Paper Ltd	Perenco UK Limited (Purbeck Southampton Pipeline)	Petroineos
Phillips 66	Portsmouth Water	Premier Transmission Ltd (SNIP)
Redundant Pipelines - LPDA	RWE - Great Yarmouth Pipeline (Bacton to Great Yarmouth Power Station)	RWEnpower (Little Barford and South Haven)
SABIC UK Petrochemicals	SAS Utility Services Ltd	Scottish and Southern Electricity Networks
Scottish Power Generation	Seabank Power Ltd	SES Water
SGN	Shell	Shell NOP
SP Energy Networks	Spring Fibre Limited	Squire Energy Networks
SSE Generation Ltd	SSE Transmission	SSE Utility Solutions Limited



Enquiry Confirmation

LSBUD Ref: 31369610

Date of enquiry: 31/10/2023

Time of enquiry: 10:44

Storengy	Tata Communications (c/o JSM Construction Ltd)	TfL – London Underground HV Cables (Road Side Cables)
Total Colnbrook Pipelines	Total Finaline Pipelines	Transmission Capital
UK Power Networks	Uniper UK Ltd	University of Cambridge Granta Backbone Network
Vattenfall	Veolia ES SELCHP Limited	Veolia ES Sheffield Ltd
Voneus Limited	VPI Power Limited	West of Duddon Sands Transmission Ltd
Westminster City Council	Zayo Group UK Ltd c/o JSM Group Ltd	

Non-LSBUD members (Asset owners not registered on LSBUD)

(The following Non-LSBUD Members may have assets in your search area. It is YOUR RESPONSIBILITY to contact them before proceeding.

Please be aware this list is not exhaustive and it is your responsibility to identify and contact all asset owners within your search area.)


Asset Owner	Preferred contact method	Phone	Status
BT	https://www.swns.bt.com/pls/mbe/welcome.home	08000232023	Not Notified
CityFibre	asset.team@cityfibre.com	033 3150 7282	Not Notified
Colt	plantenquiries@catelecomuk.com	01227768427	Not Notified
Dwr Cymru Welsh Water	https://contact.dwrcymru.com/en	0800 917 2652	Not Notified
Equans	nrswa.uk@equans.com	0800 130 3600	Not Notified
GTC	https://pe.gtc-uk.co.uk/PlantEnqMembership	01359240363	Not Notified
Lumen Technologies	plantenquiries@ocugroup.com	02087314613	Not Notified
Mobile Broadband Network Limited	mbnl.plant.enquiries@turntown.com	01212 621 100	Not Notified
Sota	sota.plantenquiries@ocugroup.com		Not Notified
Utility assets Ltd	assetrecords@utilityassets.co.uk		Not Notified
Verizon Business	osp-team@uk.verizonbusiness.com	01293611736	Not Notified
Virgin Media	http://www.digdat.co.uk	08708883116	Not Notified
Vodafone	osm.enquiries@atkinsglobal.com	01454662881	Not Notified

Disclaimer

Please refer to LSBUD's Terms of Use for full terms of use available at www.lsbud.co.uk

The results of this Enquiry are personal to the Enquirer and shall not be shared with or relied upon by any other party. The asset information on which the Enquiry results are based has been provided by LSBUD Members, therefore LSBUD will provide no guarantee that such information is accurate or reliable nor does it monitor such asset information for accuracy and reliability going forward. There may also be asset owners which do not participate in the enquiry service operated by LSBUD, including but not exclusively those set out above. Therefore, LSBUD cannot make any representation or give any guarantee or warranty as to the completeness of the information contained in the enquiry results or accept any responsibility for the accuracy of the mapping images used. LSBUD and its employees, agents and consultants accept no liability (save that nothing in this Enquiry Confirmation excludes or limits our liability for death or personal injury arising from our negligence, or our fraud or fraudulent misrepresentation, or any other liability that cannot be excluded or limited by English law) arising in respect thereof or in any other way for errors or omissions including responsibility to any person by reason of negligence.

QUALITY CHECK

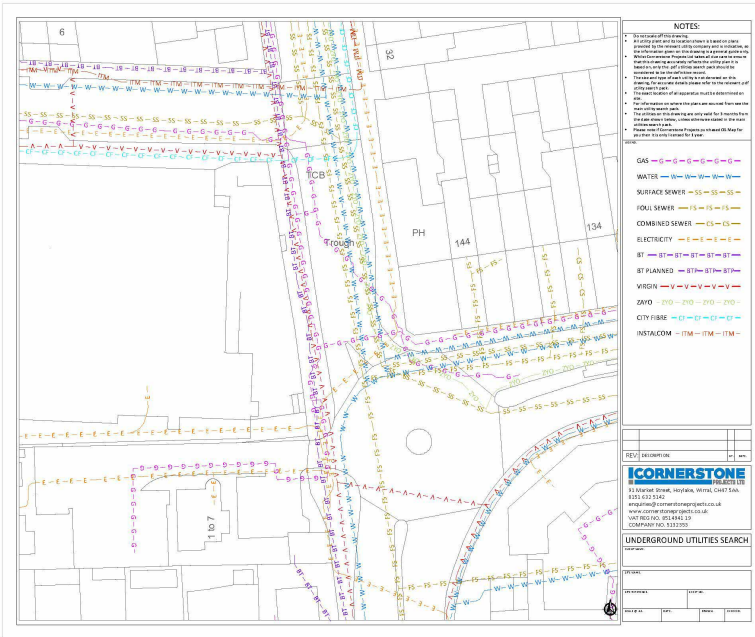
Checked and issued by:	
Name:	M.FLOX
Date:	01/11/23
Plans are valid until:	30/01/24
Unless noted otherwise plans are valid for three months from date of issue - please note the date shown above is approximate. After the above date please contact us to arrange a refreshed utility search pack at www.cornerstoneprojects.co.uk Please refer to www.cornerstoneprojects.co.uk/terms.html for full Terms and Conditions.	

Cornerstone Projects Ltd is a UK wide desktop underground utility search expert:

- Market leading pricing and response times
 - Comprehensive utility database
 - 20 Years plus experience
 - Over 85,000 completed searches
 - Over 6,000 registered businesses
- Searches to PAS 128 survey level D
 - ISO9001 certified company

Want an easier way to interpret your utility search results?

Searching through your utility results can be time consuming and complex. Here at Cornerstone, we have the ability to produce one consolidated drawing which will allow you to view all your results on a single plan. Moreover, as the utilities are drawn in separate layers, you will also be able to turn different layers on and off to allow you to focus on individual utilities.



We can produce your consolidated drawing in .dwg (CAD) format from £60.00 + VAT.
We can also convert this into a Smart .PDF starting from £35.00 + VAT.

Call us on 0151 632 5142 or email enquiries@cornerstoneprojects.co.uk for a quote for this site. Please provide your site name/reference.

Planning work near overhead lines? We can now help obtain the overhead heights (GS6 guidance) from the utility provider from as little as £23.50 per crossing. Find out more [here](#)

Need help with administering road opening licences, capacity checks or gaining quotes from the utility companies for connecting or diverting services?

Section 50 /Road Opening Licence – We will complete the application required to obtain the Section 50 and/or road opening licence on your behalf – our fee is from as little as £150.00+VAT plus Council charges.

Capacity check – We will complete an application to determine whether a utility has sufficient capacity for your proposed development and if not, what budget costs would be required to reinforce the network – our fee is from as little as £150.00+VAT per utility plus disbursements.

New Connections/Disconnections/Diversions – We will complete the administration required to obtain quotes from the utilities to connect/disconnect/divert from as little as £150.00+VAT per utility, plus disbursements