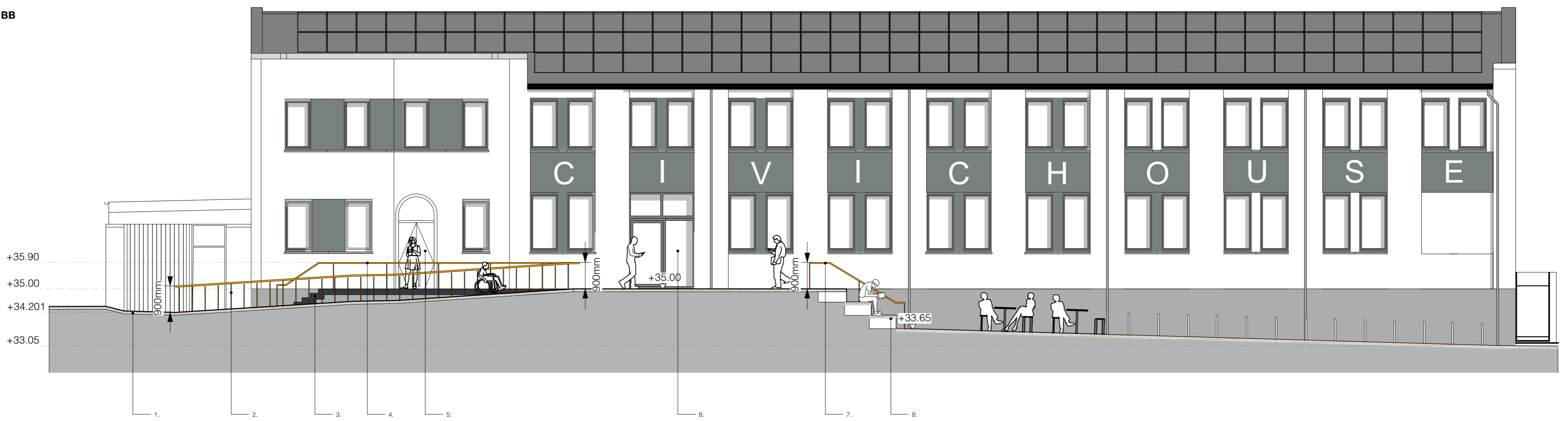


Section AA



1. Kerb edge
2. Retaining wall with balustrade
3. Existing main entrance to Civic House
4. Existing Cafe entrance to Civic House (currently not accessible)
5. Integrated drinks table within balustrade
6. Bicycle stands
7. Lighting signage

Section BB



1. Paved surface
2. Ramp balustrade
3. Retaining wall to steps and upper terrace level
4. Handrail to north steps
5. Existing main entrance to Civic House
6. Existing Cafe entrance to Civic House (currently not accessible)
7. Handrail to south steps
8. Seated steps