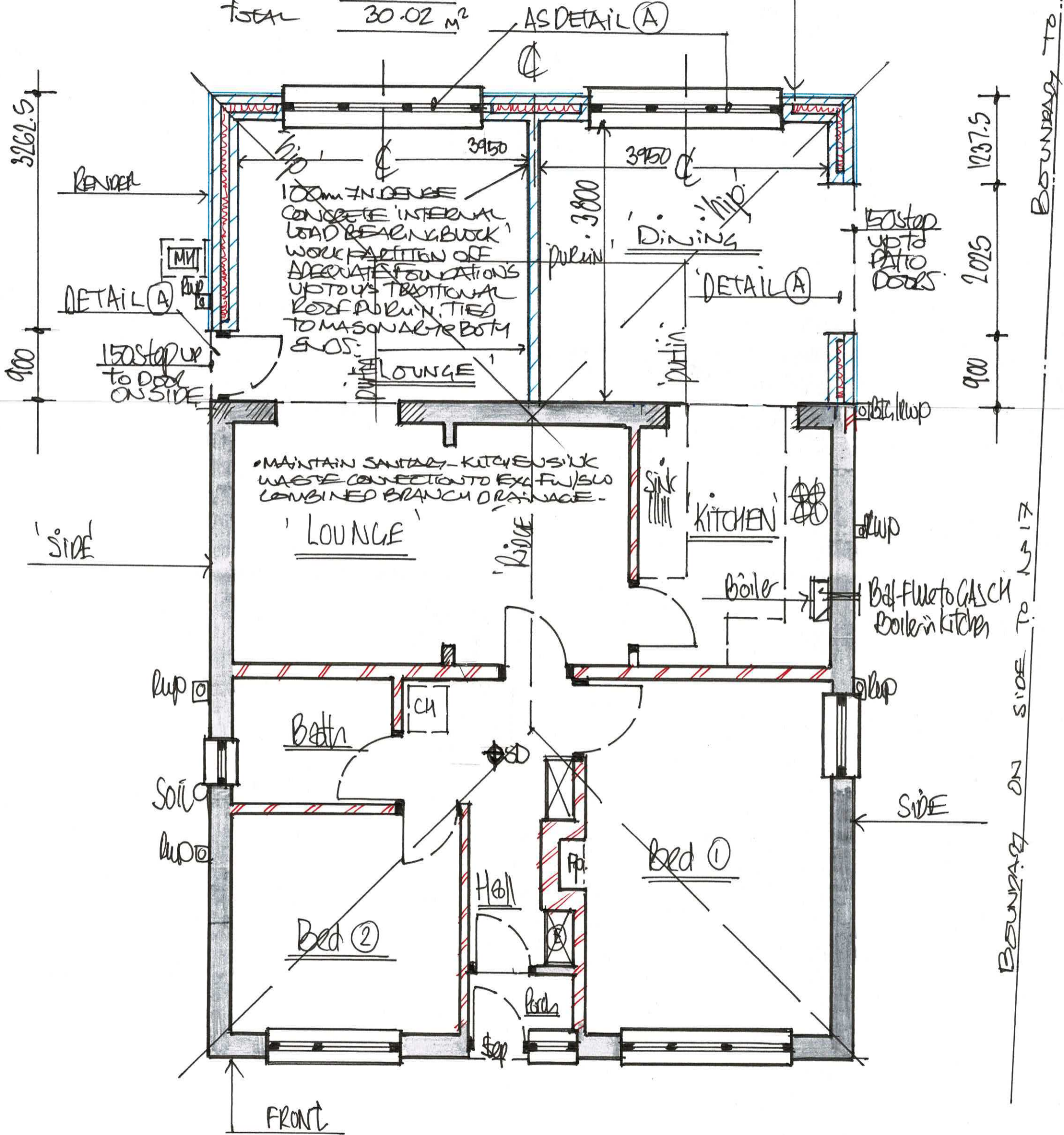


1012.5 2700 1350 2700 1012.5

ADDITIONAL INT FLOOR AREA'S M²

- LOUNGE 3.95 x 3.80 = 15.01
- DINING 3.95 x 3.80 = 15.01

TOTAL 30.02 M²



1:50 PROPOSED "G. FLOOR" - PLAN

DRG N^o 5A.

NEW DOOR + WINDOWS FRAMES, CASSEMENTS AND GLAZED UNITS

- 70mm WHITE GALV COLOUR COATED VETA/REHAVI OR SA PERFIXED UPVC FRAMES AND CASSEMENTS FITTED WITH THERMALLY-BROKEN GLAZED UNITS 6/12 8mm IN 2100 4mm PANELS WITH SOFT SEAL COATING AND 20mm ARGON GAS SEALED VACUUM BETWEEN PANELS TO ACHIEVE A MAX 1.4 U VALUE AS DETAIL JUNE 22
- ALL FRAMES TO BE FITTED WITH TRIPLE BUTTS FOR SECURE BACKDRIVING VENTILATION EQUAL TO MIN 'BOOBY' AS PT F PARA 1.52 (NIGHT USES NO LOWER SUITABLE, DUE TO PROBLEMS OF DRIVERS/SECURITY AS PT F PARA 1.52...)
- PROVIDE OPERABLE FOR RAPID-NATURAL PURVE VENTILATION i.e. FRESH AIR AS DCF EQUIVALENT IN OPENING SIZE TO MIN 1/20th ROOM FLOOR AREA
- AS BEST PRACTICE WINDOW TO STUDY TO INCORPORATE A SIDE OPENING SECONDARY MEANS OF ESCAPE WINDOW AS DCF B1 D. BETS E MIN 450 WIDE X 750 HIGH = MIN 0.33 ML IN OPENING AREA AND MAX 1.1m FLOOR TO SILL HT (AVE 900).
- ALL CASING OBSERVED TO BE IN CATCH LOCATIONS TO BE THERMALLY SEALED CLASS TO BS 6202 AS D. BETS DCF 2013 WINDOWS/FURTHER PANELS, WINDOWS WITH SILLS LESS THAN 800mm etc

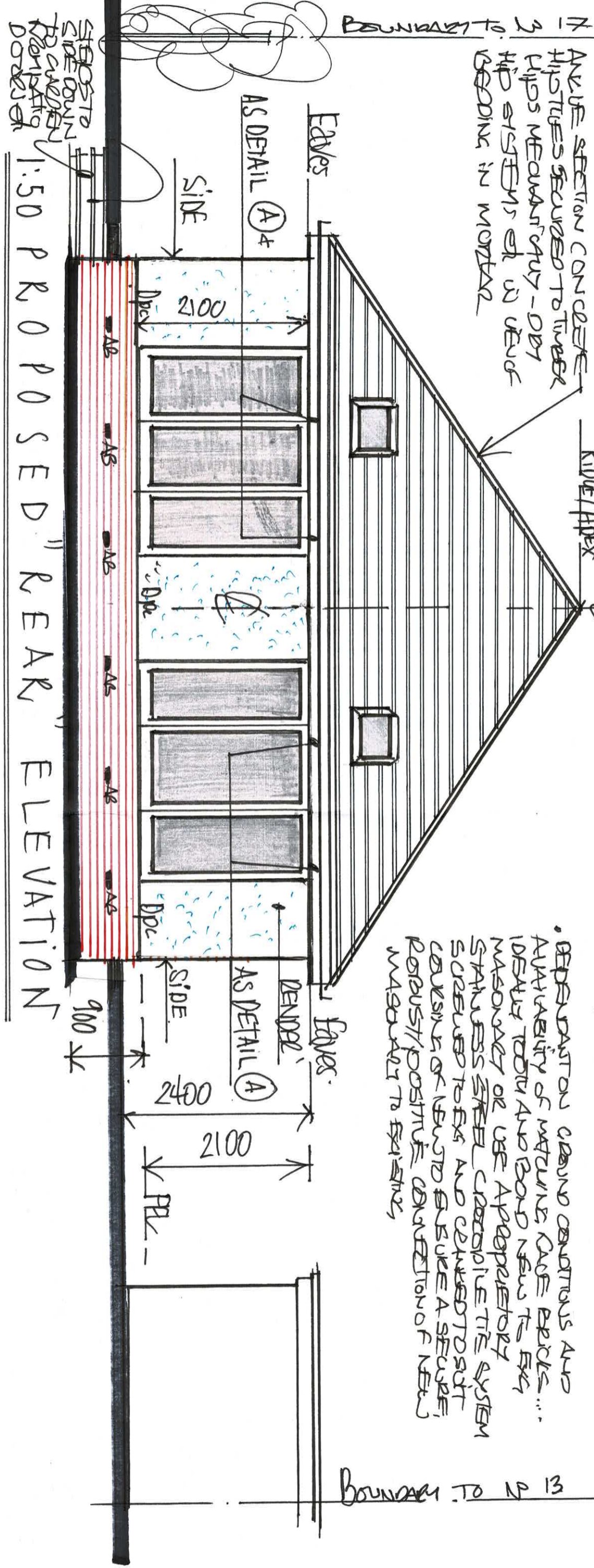
AN UPE SECTION CONCRETE HIPSTICES SECURED TO TIMBER HIPPS MECHANICALLY - DRY HIP SYSTEMS OR IN UPE BEDDING IN MORTAR

RIDGE/APPEX

- DEPENDANT ON GROUND CONDITIONS AND AVAILABILITY OF MATERIALS CASE BRICKS... IDEALLY TOOTH AND BOND NEWTS EXG MASONRY OR USE APPROPRIATE STAINLESS STEEL CORROSION RESISTANT SYSTEM SECURED TO EXG AND CEILING TO SUIT CAUSING OF NEWTS AS USE A SECURE, ROBUST/POSTIVE CONNECTION OF NEWTS MASONRY TO EXISTING,

- ROOFLINE UPVC WHITE RAL COLOUR COATED BOX? SECTIONAL PERFIXED GUTTERS AND DOWNPOUTS TO UPVC DASCIA / SOFFIT GAVES TO A MATCHING 300mm SOFFIT PROJECTION etc.

- ROOF/SKY LIGHTS VELUX/VENTITE TYPE OR SA DUE GLAZED UNITS INSTALLED TO MANUFACTURERS RECOMMENDATIONS TO WANTED INSULATED ROOF AREAS TO UNITS AND DINING FITTED BETWEEN DOORS AND PAVED UP ROOF SPACES EITHER SPILT TO SUIT SIZES/WATER/MOBS AND POSITIONS OF GLAZED UNITS SELECTED ON SITE ... (ie TO BE CONFIRMED ON SITE)



1:50 PROPOSED REAR ELEVATION

- ABS = 225x75 ALUMINIUM COLOUR COATED UPVC BRICKS BUT INTO FINIC BRICK FOUNDATION WALLS @ 135g/GOLT% TO COST VESTIGATE INSULATED SUB FLOOR Voids AS PER DCF 2013 SUSPENSION G. FLOOR.

DRGN: 6A

" EXTERNAL CAVITY WALL CONSTRUCTION: "

- EXTERNAL SELF CURED OFF WHITE 15mm SIC REBAR APPLIED TO FACE OF 100mm CONCRETE CONC BRICK SKIN, 150mm WIDE CAVITY AND 100mm 3.5N GABON SOLAR OR SA ALBERT, UNWATERPROOF CONC BRICK NUMBER SKIN, 12.5mm 4YBSM BASED, WATERPROOF, DST. GAB + SKIN OF FOR 25% DIVISION DECOR WITH 150mm WIDE GUTTY BRICK / BRICK FOUR INSULATED FROM DPC TO EAVES WITH 150mm (200mm) - DETACHED FOR 1/2" CAVITY WITH INSULATION TO ACHIEVE A MAX 0.18 U-VALUE AS DET LITNER.
- REBAR STAINLESS STEEL CAVITY WALLS @ 750mm, 4/2 AND 4/2.5% OF GEODESIC INTO BAULKRAFT SUPPORTS AND EXTRA TESTS TO OBTAIN 300mm OF DST/ WINDON REBAR, @ 225% WITH STAINLESS STEEL PREPARED CRUSTS TO PROTECT THE SYSTEM INTO WINDON OF ATTEMPTING TO DETACH AND BOND, SUBJECTED TO EX. MASONRY AND CRACKS TO SURF COURSE OF NEW MASONRY TO FORM A SECURE, POSITIVE AND REBAR CONNECTION OF NEW MASONRY TO EXISTING.
- UNIT POTENTIAL AIR LOSS TO REPAIRS OF DOORS / WINDOWS USING THERMATEX / GAVAK TYPE OR SA INSULATED DPC - CAVITY CUTS AS DETL.

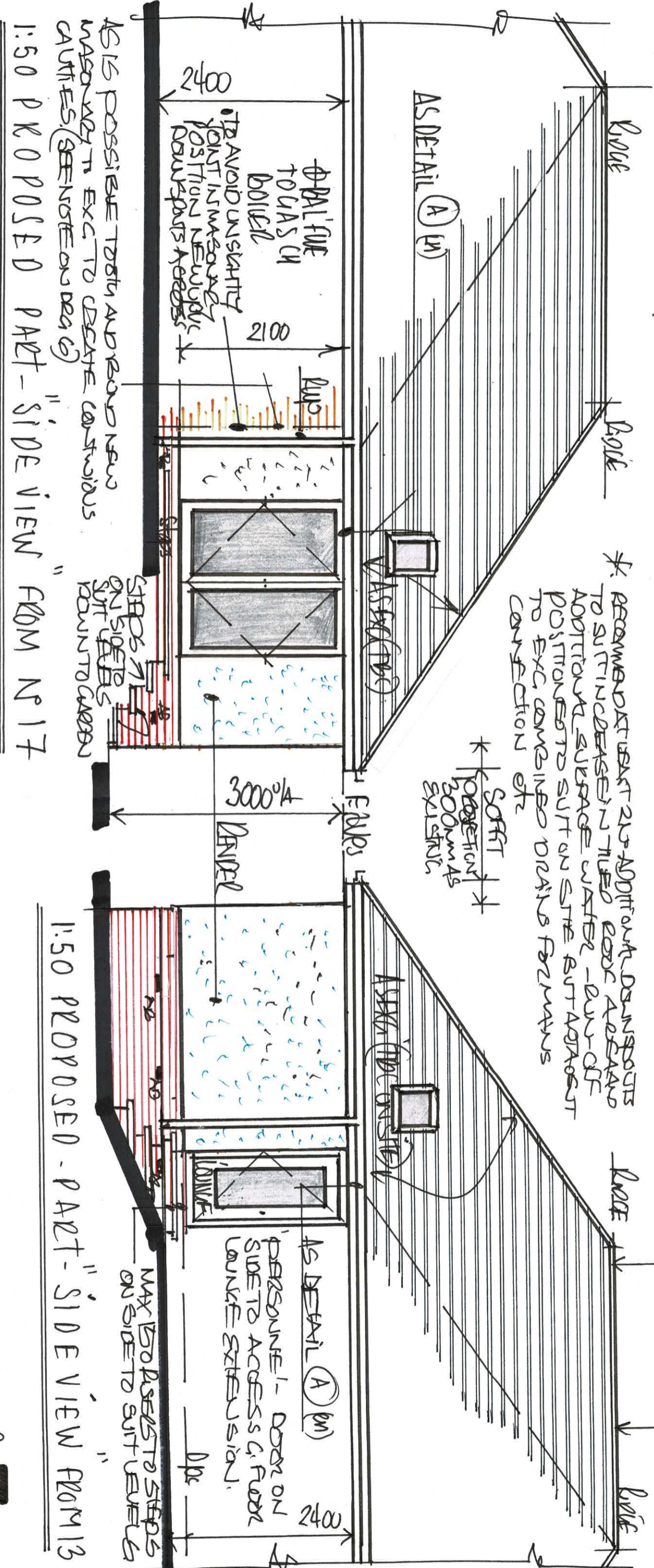
LINER'S

UNLESS STATED OTHERWISE USE 1/2" CRUC - COVER TYPE C, 150mm OPERBACKED, INSULATED STEEL UNITS OR SA AS DETAIL (A) TO SUR SPANS OVER NEW DOOR / WINDOW OPENINGS FOR MIN 150mm END BEVELS AND AS DET B USED ENCASED IN GYPER - JUNK 1/2" HOW FRAME BOARD AS AN ELEMENT OF THE STRUCTURE OF AS DETAIL (A) & (D)

DRY RISE SYSTEMS ARE MANUFACTURED SPURGED TO PROTECT TRUSSES IN USE OF REDDING SAND / DUST

* RECOMMEND REBAR 25% ADDITIONAL DOWNSPOUTS TO SUIT INCREASE IN TILED ROOF AREA AND ADDITIONAL SURFACE WATER - RUN OFF POSITIONED TO SUIT ON SITE BUT ADJUST TO EXC COMBINED DRAINS FORMANS CONNECTION OF

SOFT PROJECTION 300mm AS EXISTING



AS IS POSSIBLE TO IN AND REBAR NEW MASONRY TO EXC TO CREATE CONCRETE CAVITIES (SEE NOTE ON DRAWING) " 1:50 PROPOSED PART - SIDE VIEW FROM N° 17 "

" 1:50 PROPOSED - PART - SIDE VIEW FROM S° "

D R G N: 7A.